

Product datasheet for **RC229597**

RAB35 (NM_001167606) Human Tagged ORF Clone

Product data:

Product Type: Expression Plasmids
Product Name: RAB35 (NM_001167606) Human Tagged ORF Clone
Tag: Myc-DDK
Symbol: RAB35
Synonyms: H-ray; RAB1C; RAY
Mammalian Cell Selection: Neomycin
Vector: pCMV6-Entry (PS100001)
E. coli Selection: Kanamycin (25 ug/mL)
ORF Nucleotide Sequence: >RC229597 representing NM_001167606
Red=Cloning site Blue=ORF Green=Tags(s)

TTTTGTAATACGACTCACTATAGGGCGGCCGGAATTCGTCGACTGGATCCGGTACCGAGGAGATCTGCC
GCC**CGATCGCC**

ATGGCCCGGGACTACGACCACCTCTTCAAGCTGCTCATCATCGGCGACAGCGGTGTGGCAAGAGCAGTT
TACTGTTGCGTTTTGCAGACAACACTTTCTCAGGCAGCTACATCACCACGATCGGAGTGGATTTCAAGT
CCGGACCGTGGAGATCAACGGGGAGAAGGTGAAGCTGCAGATCTGGGACACAGCGGGCAGGAGCGCTTC
CGCACCATCACCTCCACGTATTATCGGGGACCCACGGGGTATTGTGGTTTACGACGTCACCAGTGCCG
AGTCCTTTGTCAACGTCAAGCGGTGGCTTCACGAAATCAACCAGAAGTGTGATGATGTGTGCCGAATATT
AGATGTTCAACTGCATCACGGAGCTGGTCTCCGAGCAAAGAAAGACAACCTGGCAAACAGCAGCAGCA
ACAACAGAACGATGTGGTGAAGCTCACGAAGAACAG

ACGCGTACGCGGCCGCTCGAGCAGAACTCATCTCAGAAGAGGATCTGGCAGCAAATGATATCCTGGATT
ACAAGGATGACGACGATAAGGTTTAA

Protein Sequence: >RC229597 representing NM_001167606
Red=Cloning site Green=Tags(s)

MARDYDHLFKLLIIGDSGVGKSSLLLRFDNTFSGSYITTIGVDFKIRTVEINGEKVKLQIWDTAGQERF
RTITSTYYRGTHGVIIVYDVTSAESFVNKRWLHEINQNCDDVCRILDVQLHHGAGPPSKERQPGKTA
TTERCGEAHEEQ

TRTRPLEQKLISEEDLAANDILDYKDDDDKV

Chromatograms: https://cdn.origene.com/chromatograms/ja1456_e09.zip



[View online >](#)

Restriction Sites: SgfI-MluI

Cloning Scheme:



ACCN: NM_001167606

ORF Size: 456 bp

OTI Disclaimer: The molecular sequence of this clone aligns with the gene accession number as a point of reference only. However, individual transcript sequences of the same gene can differ through naturally occurring variations (e.g. polymorphisms), each with its own valid existence. This clone is substantially in agreement with the reference, but a complete review of all prevailing variants is recommended prior to use. [More info](#)

OTI Annotation: This clone was engineered to express the complete ORF with an expression tag. Expression varies depending on the nature of the gene.

Components: The ORF clone is ion-exchange column purified and shipped in a 2D barcoded Matrix tube containing 10ug of transfection-ready, dried plasmid DNA (reconstitute with 100 ul of water).

Reconstitution Method:

1. Centrifuge at 5,000xg for 5min.
2. Carefully open the tube and add 100ul of sterile water to dissolve the DNA.
3. Close the tube and incubate for 10 minutes at room temperature.
4. Briefly vortex the tube and then do a quick spin (less than 5000xg) to concentrate the liquid at the bottom.
5. Store the suspended plasmid at -20°C. The DNA is stable for at least one year from date of shipping when stored at -20°C.

RefSeq: [NM_001167606.2](#)

RefSeq ORF: 459 bp

Locus ID: 11021

UniProt ID: [Q15286](#)

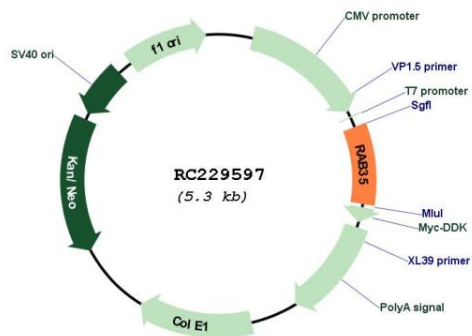
Cytogenetics: 12q24.23

Protein Families: Druggable Genome

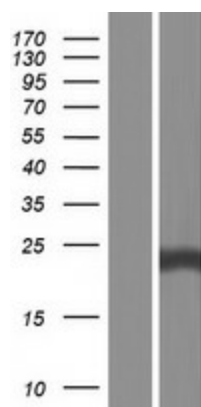
MW: 17.5 kDa

Gene Summary: The small GTPases Rab are key regulators of intracellular membrane trafficking, from the formation of transport vesicles to their fusion with membranes. Rabs cycle between an inactive GDP-bound form and an active GTP-bound form that is able to recruit to membranes different sets of downstream effectors directly responsible for vesicle formation, movement, tethering and fusion. That Rab is involved in the process of endocytosis and is an essential rate-limiting regulator of the fast recycling pathway back to the plasma membrane. During cytokinesis, required for the postfurlowing terminal steps, namely for intercellular bridge stability and abscission, possibly by controlling phosphatidylinositol 4,5-bis phosphate (PIP2) and SEPT2 localization at the intercellular bridge. May indirectly regulate neurite outgrowth. Together with TBC1D13 may be involved in regulation of insulin-induced glucose transporter SLC2A4/GLUT4 translocation to the plasma membrane in adipocytes.[UniProtKB/Swiss-Prot Function]

Product images:



Circular map for RC229597



Western blot validation of overexpression lysate (Cat# [LY432597]) using anti-DDK antibody (Cat# [TA50011-100]). Left: Cell lysates from untransfected HEK293T cells; Right: Cell lysates from HEK293T cells transfected with RC229597 using transfection reagent MegaTran 2.0 (Cat# [TT210002]).