

## Product datasheet for **RC229583**

### **EOLA1 (NM\_001171909) Human Tagged ORF Clone**

#### Product data:

Product Type:	Expression Plasmids
Product Name:	EOLA1 (NM_001171909) Human Tagged ORF Clone
Tag:	Myc-DDK
Symbol:	EOLA1
Synonyms:	CXorf40; CXorf40A
Mammalian Cell Selection:	Neomycin
Vector:	pCMV6-Entry (PS100001)
E. coli Selection:	Kanamycin (25 ug/mL)
ORF Nucleotide Sequence:	>RC229583 representing NM_001171909 Red=Cloning site Blue=ORF Green=Tags(s)

TTTTGTAATACGACTCACTATAGGGCGGCCGGAATTCGTCGACTGGATCCGGTACCGAGGAGATCTGCC  
GCC**CGATCGCC**

ATGAAGTTTGGCTGCCTCTCCTCCGGCAGCCTTATGCTGGCTTGTCTTAAATGGAATCAAGACTGTGG  
AGACGCGCTGGCGTCCCCTGCTGAGCAGCCAGCGGAACGTACCATCGCCGTCCACATTGCTCACAGGGA  
CTGGGAAGGCGATGCCTGGCGGGAGCTGCTGGTGGAGAGACTCGGGATGACTCCTGCTCAGATTCAAGCC  
TTGCTCAGGAAAGGGAAAAGTTTGGTCGAGGAGTGATAGCGGGACTCGTTGACATTGGGAAAACCTTGC  
AATGCCCCGAAGACTTAACTCCCGATGAGGTTGTGGAAGTAAAGAAATCAAGCTGTACTGACCAACCTGAA  
GCAGAAGTACCTGACTGTGATTTCAAACCCAGGTGGTACTGGAGCCCATACCTAGGAAAGGAGGCAAG  
GATGTATTCCAGAATCCA

**ACGCGT**ACGCGGCCGCTCGAGCAGAACTCATCTCAGAAGAGGATCTGGCAGCAAATGATATCCTGGATT  
ACAAGGATGACGACGATAAGGTTTAA

Protein Sequence:	>RC229583 representing NM_001171909 Red=Cloning site Green=Tags(s)
-------------------	-----------------------------------------------------------------------

MKFGCLSFRQPYAGFVLNGIKTVETRWRLSSQRNCTIAVHIAHRDWEGDWRELLVERLGMTPAQIQAL  
LLRKGEKFGRGVIAGLVDIGETLQCPEDLTPDEVVELENQAVLTLNKQKYLTVISNPRWLLLEIPRKGK  
DVFQNP

**TRTRPLEQKLI**SEEDLAANDILDYKDDDDKV

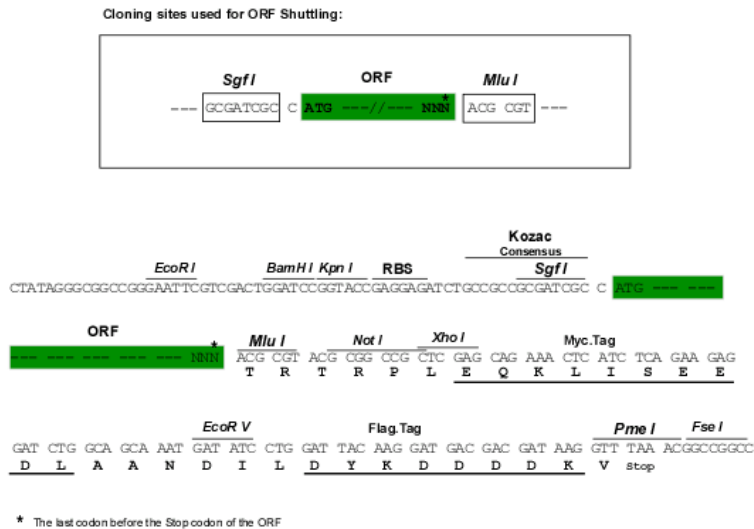
Chromatograms:	<a href="https://cdn.origene.com/chromatograms/ja1432_g07.zip">https://cdn.origene.com/chromatograms/ja1432_g07.zip</a>
----------------	-------------------------------------------------------------------------------------------------------------------------



[View online >](#)

Restriction Sites: SgfI-MluI

Cloning Scheme:



ACCN: NM\_001171909

ORF Size: 438 bp

OTI Disclaimer: The molecular sequence of this clone aligns with the gene accession number as a point of reference only. However, individual transcript sequences of the same gene can differ through naturally occurring variations (e.g. polymorphisms), each with its own valid existence. This clone is substantially in agreement with the reference, but a complete review of all prevailing variants is recommended prior to use. [More info](#)

OTI Annotation: This clone was engineered to express the complete ORF with an expression tag. Expression varies depending on the nature of the gene.

Components: The ORF clone is ion-exchange column purified and shipped in a 2D barcoded Matrix tube containing 10ug of transfection-ready, dried plasmid DNA (reconstitute with 100 ul of water).

Reconstitution Method:

1. Centrifuge at 5,000xg for 5min.
2. Carefully open the tube and add 100ul of sterile water to dissolve the DNA.
3. Close the tube and incubate for 10 minutes at room temperature.
4. Briefly vortex the tube and then do a quick spin (less than 5000xg) to concentrate the liquid at the bottom.
5. Store the suspended plasmid at -20°C. The DNA is stable for at least one year from date of shipping when stored at -20°C.

RefSeq: [NM\\_001171909.3](#), [NP\\_001165380.1](#)

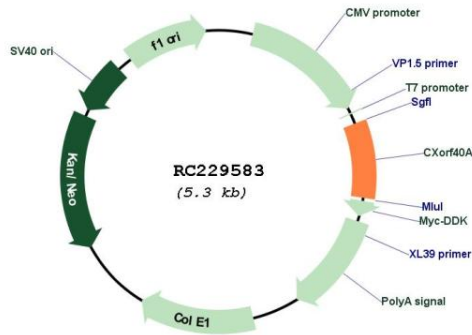
RefSeq ORF: 441 bp

Locus ID: 91966

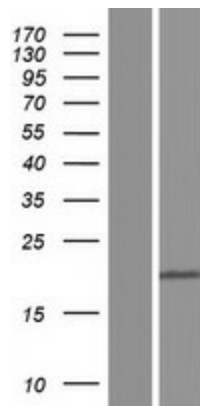
UniProt ID: [Q8TE69](#)

**Cytogenetics:** Xq28  
**MW:** 17 kDa  
**Gene Summary:** May have an important role of cell protection in inflammation reaction.[UniProtKB/Swiss-Prot Function]

**Product images:**



Circular map for RC229583



Western blot validation of overexpression lysate (Cat# [LY432583]) using anti-DDK antibody (Cat# [TA50011-100]). Left: Cell lysates from untransfected HEK293T cells; Right: Cell lysates from HEK293T cells transfected with RC229583 using transfection reagent MegaTran 2.0 (Cat# [TT210002]).