

Product datasheet for **RC229581**

TRAPPC1 (NM_001166621) Human Tagged ORF Clone

Product data:

Product Type: Expression Plasmids
Product Name: TRAPPC1 (NM_001166621) Human Tagged ORF Clone
Tag: Myc-DDK
Symbol: TRAPPC1
Synonyms: BET5; MUM2
Mammalian Cell Selection: Neomycin
Vector: pCMV6-Entry (PS100001)
E. coli Selection: Kanamycin (25 ug/mL)
ORF Nucleotide Sequence: >RC229581 representing NM_001166621
Red=Cloning site Blue=ORF Green=Tags(s)

TTTTGTAATACGACTCACTATAGGGCGGCCGGAATTCGTCGACTGGATCCGGTACCGAGGAGATCTGCC
GCC**CGATCGCC**

ATGACTGTCCACAACCTGTACCTGTTTGACCGAATGGAGTGTGTCTGCACTACAGCGAATGGCACC
AGAAGCAAGCAGGGATCCCAAGGAGGAGGAGTATAAGCTGATGTACGGGATGCTCTTCTATCCGCTC
GTTTGTGACAGATGTCCCGCTAGACATGAAGGATGGCTTCTGGCCTTCCAACTAGCCGTTACAAA
CTCCATTACTACGAGACGCCACTGGGATCAAAGTTGTCATGAATACTGACTTGGGCGTGGGACCCATCC
GAGATGTGCTGCACCACATCTACAGTGCCTGTATGTGGAGCTGGTGGTGAAGAATCCCTGTGCCCGCT
GGGCCAACTGTGCAAAGTGAGCTCTTTCGCTCCCGACTGGACTCCTATGTTGCTCTCTGCCCTTCTTC
TCCGCCCGGGCTGGC

ACGCGTACGCGGCCGCTCGAGCAGAACTCATCTCAGAAGAGGATCTGGCAGCAAATGATATCCTGGATT
ACAAGGATGACGACGATAAGGTTTAA

Protein Sequence: >RC229581 representing NM_001166621
Red=Cloning site Green=Tags(s)
MTVHNLVLFDRNGVCLHYSEWHRKKQAGIPKEEYKLMYGMLFSIRSFVSKMSPLDMKDGFLAFQTSRYK
LHYYETPTGIKVMNTDLGVGPIRDVLLHHIYSALVVELVVKNPCLPLGQTVQSELFRSRLDSYVRSPLPF
SARAG

TRTRPLEQKLISEEDLAANDILDYKDDDDKV

Chromatograms: https://cdn.origene.com/chromatograms/ja1455_h08.zip



[View online >](#)

Restriction Sites: SgfI-MluI

Cloning Scheme:



ACCN: NM_001166621

ORF Size: 435 bp

OTI Disclaimer: The molecular sequence of this clone aligns with the gene accession number as a point of reference only. However, individual transcript sequences of the same gene can differ through naturally occurring variations (e.g. polymorphisms), each with its own valid existence. This clone is substantially in agreement with the reference, but a complete review of all prevailing variants is recommended prior to use. [More info](#)

OTI Annotation: This clone was engineered to express the complete ORF with an expression tag. Expression varies depending on the nature of the gene.

Components: The ORF clone is ion-exchange column purified and shipped in a 2D barcoded Matrix tube containing 10ug of transfection-ready, dried plasmid DNA (reconstitute with 100 ul of water).

Reconstitution Method:

1. Centrifuge at 5,000xg for 5min.
2. Carefully open the tube and add 100ul of sterile water to dissolve the DNA.
3. Close the tube and incubate for 10 minutes at room temperature.
4. Briefly vortex the tube and then do a quick spin (less than 5000xg) to concentrate the liquid at the bottom.
5. Store the suspended plasmid at -20°C. The DNA is stable for at least one year from date of shipping when stored at -20°C.

RefSeq: [NM_001166621.1](#), [NP_001160093.1](#)

RefSeq ORF: 438 bp

Locus ID: 58485

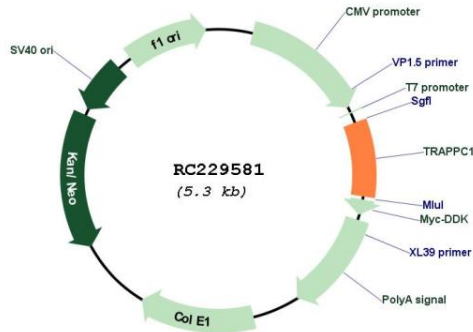
UniProt ID: [Q9Y5R8](#)

Cytogenetics: 17p13.1

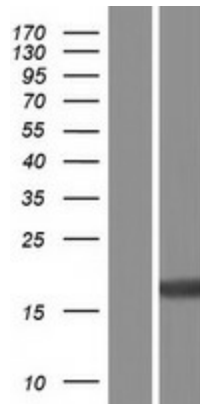
MW: 17.3 kDa

Gene Summary: This gene product plays a role in vesicular transport of proteins to the Golgi apparatus from the endoplasmic reticulum. The encoded protein is a component of the multisubunit transport protein particle (TRAPP) complex. Alternative splicing results in multiple transcript variants.[provided by RefSeq, Oct 2009]

Product images:



Circular map for RC229581



Western blot validation of overexpression lysate (Cat# [LY432581]) using anti-DDK antibody (Cat# [TA50011-100]). Left: Cell lysates from untransfected HEK293T cells; Right: Cell lysates from HEK293T cells transfected with RC229581 using transfection reagent MegaTran 2.0 (Cat# [TT210002]).