

## Product datasheet for **RC229569**

### **GOLGA7 (NM\_001174124) Human Tagged ORF Clone**

#### Product data:

**Product Type:** Expression Plasmids  
**Product Name:** GOLGA7 (NM\_001174124) Human Tagged ORF Clone  
**Tag:** Myc-DDK  
**Symbol:** GOLGA7  
**Synonyms:** GCP16; GOLGA3AP1; GOLGA7A; HSPC041  
**Mammalian Cell Selection:** Neomycin  
**Vector:** pCMV6-Entry (PS100001)  
**E. coli Selection:** Kanamycin (25 ug/mL)  
**ORF Nucleotide Sequence:** >RC229569 representing NM\_001174124  
**Red=Cloning site Blue=ORF Green=Tags(s)**

TTTTGTAATACGACTCACTATAGGGCGCCGGAATTCGTCGACTGGATCCGGTACCGAGGAGATCTGCC  
GCC**CGATCGCC**

ATGAGGCCGAGCAGGCCCGGTGTCCGAAAGGTGTTTCATTCAGCGAGACTACAGCAGTGGCACACGCT  
GCCAGTTCAGACCAAGTCCCTGCGGAGCTGGAGAACCGGATTGATAGGCAGCAGTTTGAAGAAACAGT  
TCGAATCTAAATAACCTTTATGCAGAAGCAGAGAAGCTTGGCGCCAGTCATATCTCGAAGGTTGTTT  
GCTTGTTAACAGCATATACCATCTTCTATGCATGGAAGCTCATTATGAGAAGGTTCTGAAGAAAGTCT  
CCAAATACATTCAAGAGCAGAATGAGAAGATCTATGCTCCACAAGCCTCCTCTGACAGACCCTATTGA  
GCGAGGACTGCGAGTTATTGAAATTACCATTTATGAAGACAGAGGCATGAGCAGTGAAGA

**ACGCGT**ACGCGGCCGCTCGAGCAGAAACTCATCTCAGAAGAGGATCTGGCAGCAAATGATATCCTGGATT  
ACAAGGATGACGACGATAAGGTTTAA

**Protein Sequence:** >RC229569 representing NM\_001174124  
**Red=Cloning site Green=Tags(s)**

MRPQQAPVSGKVFIQRDYSSGTRCQFQTKFPAELENRIDRQQFEETVRTLNLYAEAEKLGQSYLEGCL  
ACL TAYTIFLCMETHYEKVLKKVSKYIQEQNEKIYAPQGLLLTDPIERGLRVIEITIIYEDRGMSSGR

**TR**TRPLEQKLISEEDLAANDILDYKDDDDKV

**Chromatograms:** [https://cdn.origene.com/chromatograms/ja1433\\_g11.zip](https://cdn.origene.com/chromatograms/ja1433_g11.zip)

**Restriction Sites:** SgfI-MluI



[View online »](#)

**Cloning Scheme:**


**ACCN:** NM\_001174124

**ORF Size:** 411 bp

**OTI Disclaimer:** The molecular sequence of this clone aligns with the gene accession number as a point of reference only. However, individual transcript sequences of the same gene can differ through naturally occurring variations (e.g. polymorphisms), each with its own valid existence. This clone is substantially in agreement with the reference, but a complete review of all prevailing variants is recommended prior to use. [More info](#)

**OTI Annotation:** This clone was engineered to express the complete ORF with an expression tag. Expression varies depending on the nature of the gene.

**Components:** The ORF clone is ion-exchange column purified and shipped in a 2D barcoded Matrix tube containing 10ug of transfection-ready, dried plasmid DNA (reconstitute with 100 ul of water).

- Reconstitution Method:**
1. Centrifuge at 5,000xg for 5min.
  2. Carefully open the tube and add 100ul of sterile water to dissolve the DNA.
  3. Close the tube and incubate for 10 minutes at room temperature.
  4. Briefly vortex the tube and then do a quick spin (less than 5000xg) to concentrate the liquid at the bottom.
  5. Store the suspended plasmid at -20°C. The DNA is stable for at least one year from date of shipping when stored at -20°C.

**RefSeq ORF:** 405 bp

**Locus ID:** 51125

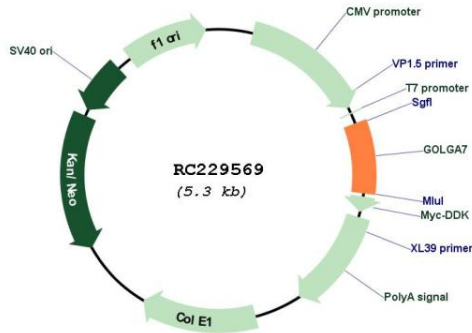
**UniProt ID:** [Q7Z5G4](#)

**Cytogenetics:** 8p11.21

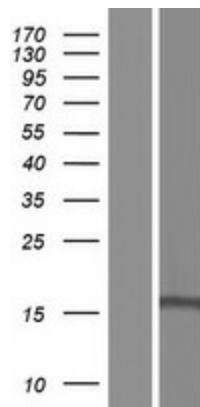
**MW:** 16 kDa

**Gene Summary:**

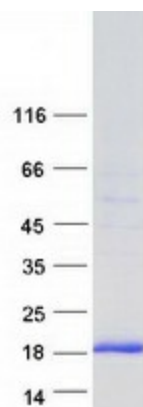
May be involved in protein transport from Golgi to cell surface. The ZDHHC9-GOLGA7 complex is a palmitoyltransferase specific for HRAS and NRAS.[UniProtKB/Swiss-Prot Function]

**Product images:**


Circular map for RC229569



Western blot validation of overexpression lysate (Cat# [LY432569]) using anti-DDK antibody (Cat# [TA50011-100]). Left: Cell lysates from untransfected HEK293T cells; Right: Cell lysates from HEK293T cells transfected with RC229569 using transfection reagent MegaTran 2.0 (Cat# [TT210002]).



Coomassie blue staining of purified GOLGA7 protein (Cat# [TP329569]). The protein was produced from HEK293T cells transfected with GOLGA7 cDNA clone (Cat# RC229569) using MegaTran 2.0 (Cat# [TT210002]).