

Product datasheet for RC229568

PIN4 (NM_001170747) Human Tagged ORF Clone

Product data:

Product Type: Expression Plasmids
Product Name: PIN4 (NM_001170747) Human Tagged ORF Clone
Tag: Myc-DDK
Symbol: PIN4
Synonyms: EPVH; PAR14; PAR17
Mammalian Cell Selection: Neomycin
Vector: pCMV6-Entry (PS100001)
E. coli Selection: Kanamycin (25 ug/mL)
ORF Nucleotide Sequence: >RC229568 representing NM_001170747
 Red=Cloning site Blue=ORF Green=Tags(s)

TTTTGTAATACGACTCACTATAGGGCGGCCGGAATTCGTCGACTGGATCCGGTACCGAGGAGATCTGCC
 GCC**CGGATCGCC**

ATGCCCATGGCGGGCTTCTAAAGGGGCTTGTACGGCACTGGAGCGGTTACAGCGTTCAACAACAAGCTT
 CCAAGATGCCGCCAAAGGAAAAAGTGGTTCTGGAAAAGCGGGAAAGGGGAGCAGCCTCTGGGAGTGA
 CAGTGTGACAAGAAGGCTCAAGGTCCCAAAGGTGGTGGCAATGCAGTAAAGGTGAGACACATTCTATGT
 GAAAAACATGGCAAATCATGGAAGCCATGAAAAAGTTAAAGTCTGGGATGAGATTCAATGAAGTGGCCG
 CACAGTATAGTGAAGATAAAGCCAGGCAAGGGATTCCAGCCTGCAGCAACATGCTGGTACCATAGAGA
 CCTGAGAAGCACCTCATCTATTGGTATCATATTTACAAACCACCCCT

ACGCGTACGCGGCCGCTCGAGCAGAACTCATCTCAGAAGAGGATCTGGCAGCAAATGATATCCTGGATT
 ACAAGGATGACGACGATAAGGTTTAA

Protein Sequence: >RC229568 representing NM_001170747
 Red=Cloning site Green=Tags(s)

MPMAGLLKGLVRQLERFSVQQQASKMPPKKGKSGSKAGKGAASGSDSADKKAQGPKGNNVAVKVRHILC
 EKHGKIMEAMEKLSGMRFNEVAAQYSEDKARQGIPSLQQHAGHHRDLRSTLISLVSYLQTP

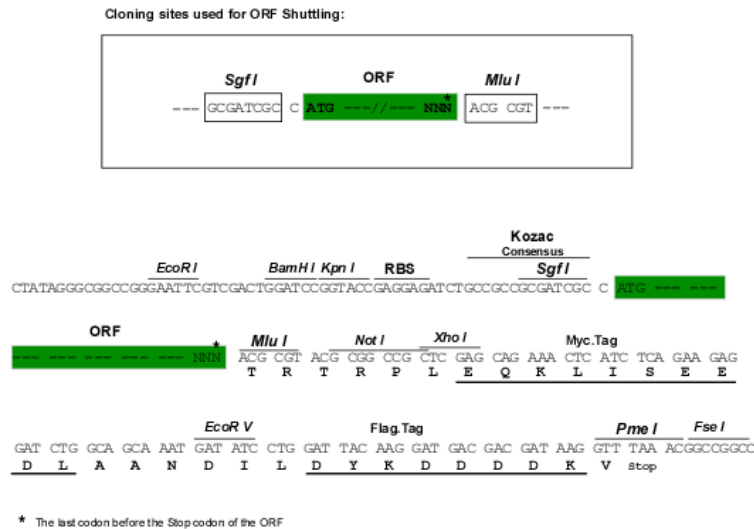
TRTRPLEQKLISEEDLAANDILDYKDDDDKV

Chromatograms: https://cdn.origene.com/chromatograms/ja1433_a10.zip

Restriction Sites: SgfI-MluI



[View online »](#)

Cloning Scheme:


ACCN: NM_001170747

ORF Size: 399 bp

OTI Disclaimer: The molecular sequence of this clone aligns with the gene accession number as a point of reference only. However, individual transcript sequences of the same gene can differ through naturally occurring variations (e.g. polymorphisms), each with its own valid existence. This clone is substantially in agreement with the reference, but a complete review of all prevailing variants is recommended prior to use. [More info](#)

OTI Annotation: This clone was engineered to express the complete ORF with an expression tag. Expression varies depending on the nature of the gene.

Components: The ORF clone is ion-exchange column purified and shipped in a 2D barcoded Matrix tube containing 10ug of transfection-ready, dried plasmid DNA (reconstitute with 100 ul of water).

Reconstitution Method:

1. Centrifuge at 5,000xg for 5min.
2. Carefully open the tube and add 100ul of sterile water to dissolve the DNA.
3. Close the tube and incubate for 10 minutes at room temperature.
4. Briefly vortex the tube and then do a quick spin (less than 5000xg) to concentrate the liquid at the bottom.
5. Store the suspended plasmid at -20°C. The DNA is stable for at least one year from date of shipping when stored at -20°C.

RefSeq: [NM_001170747.1](#), [NP_001164218.1](#)

RefSeq ORF: 402 bp

Locus ID: 5303

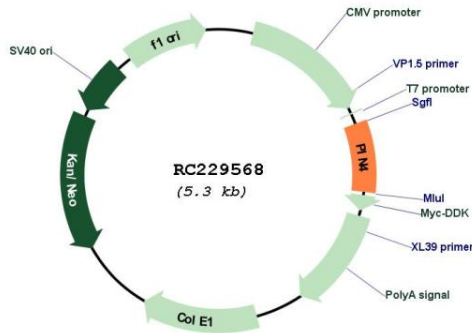
UniProt ID: [Q9Y237](#)

Cytogenetics: Xq13.1

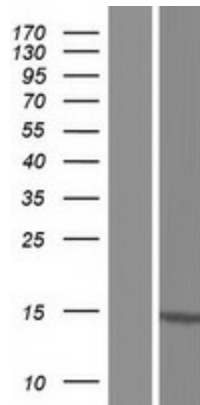
MW: 14.6 kDa

Gene Summary: This gene encodes a member of the parvulin subfamily of the peptidyl-prolyl cis/trans isomerase protein family. The encoded protein catalyzes the isomerization of peptidylprolyl bonds, and may play a role in the cell cycle, chromatin remodeling, and/or ribosome biogenesis. The encoded protein may play an additional role in the mitochondria. [provided by RefSeq, Dec 2009]

Product images:



Circular map for RC229568



Western blot validation of overexpression lysate (Cat# [LY432568]) using anti-DDK antibody (Cat# [TA50011-100]). Left: Cell lysates from untransfected HEK293T cells; Right: Cell lysates from HEK293T cells transfected with RC229568 using transfection reagent MegaTran 2.0 (Cat# [TT210002]).