

## Product datasheet for **RC229563**

### IFITM10 (NM\_001170820) Human Tagged ORF Clone

#### Product data:

**Product Type:** Expression Plasmids  
**Product Name:** IFITM10 (NM\_001170820) Human Tagged ORF Clone  
**Tag:** Myc-DDK  
**Symbol:** IFITM10  
**Synonyms:** DSPA3  
**Mammalian Cell Selection:** Neomycin  
**Vector:** pCMV6-Entry (PS100001)  
**E. coli Selection:** Kanamycin (25 ug/mL)  
**ORF Nucleotide Sequence:** >RC229563 representing NM\_001170820  
**Red=Cloning site Blue=ORF Green=Tags(s)**

TTTTGTAATACGACTCACTATAGGGCGCCGGGAATTCGTCGACTGGATCCGGTACCGAGGAGATCTGCC  
GCC**CGGATCGCC**

ATGGCGCCACACTGTTCCCATGGAGTCCAAGAGCAGCAAGACCGACAGCGTGC GGCTGCCGGCGCGC  
CCCCTGCCTGCAAGCACCTAGCCGAGAAGAAGACGATGACCAACCCACGACCGTCATCGAGGTCTACCC  
GGACACCACCGAGGTGAACGACTATTACCTGTGGTCCATCTTCAACTTCGCTACCTCAACTTCTGCTGC  
CTGGGCTTCATCGCCTTGGCCTACTCCCTCAAAGTGCAGACAAGAAGCTTCTCAATGACCTGAATGGAG  
CCGTGGAGGATGCAAAGACGGCCGGCTGTTCAACATCACCAGTTCTGCCCTGGCAGCCTCCTGCATCAT  
CCTCGTCTTCATCTTCTGCGGTACCCCTCACCGACTAC

**ACGCGT**ACGCGGCCGCTCGAGCAGAAACTCATCTCAGAAGAGGATCTGGCAGCAAATGATATCCTGGATT  
ACAAGGATGACGACGATAAGGTTTAA

**Protein Sequence:** >RC229563 representing NM\_001170820  
**Red=Cloning site Green=Tags(s)**

MAPTLFPMESKSSKTDSVRAAGAPPACKHLAEKKTMTNPTTVIEVYPTTEVNDYYLWSIFNFVYLNFFCC  
LGFIALAYSLKVRDKLLNLDNGAVEDAKTARLFNITSSALAASCIILVIFLRYPLTDY

**TR**TRPLEQKLISEEDLAANDILDYKDDDDKV

**Chromatograms:** [https://cdn.origene.com/chromatograms/mk8036\\_g07.zip](https://cdn.origene.com/chromatograms/mk8036_g07.zip)

**Restriction Sites:** SgfI-MluI

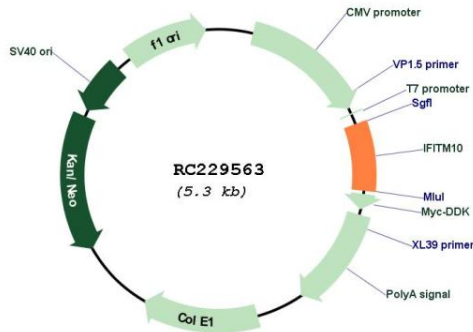


[View online »](#)

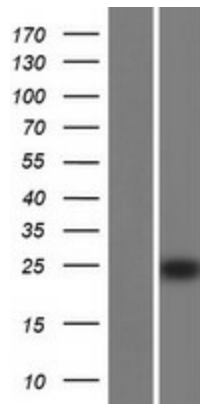


MW: 14.52 kDa

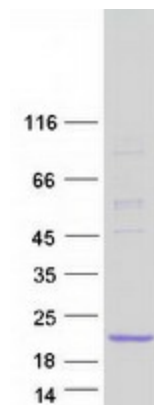
**Product images:**



Circular map for RC229563



Western blot validation of overexpression lysate (Cat# [LY432563]) using anti-DDK antibody (Cat# [TA50011-100]). Left: Cell lysates from untransfected HEK293T cells; Right: Cell lysates from HEK293T cells transfected with RC229563 using transfection reagent MegaTran 2.0 (Cat# [TT210002]).



Coomassie blue staining of purified IFITM10 protein (Cat# [TP329563]). The protein was produced from HEK293T cells transfected with IFITM10 cDNA clone (Cat# RC229563) using MegaTran 2.0 (Cat# [TT210002]).