

Product datasheet for **RC229498**

LST1 (NM_001166538) Human Tagged ORF Clone

Product data:

Product Type: Expression Plasmids
Product Name: LST1 (NM_001166538) Human Tagged ORF Clone
Tag: Myc-DDK
Symbol: LST1
Synonyms: B144; D6S49E; LST-1
Mammalian Cell Selection: Neomycin
Vector: pCMV6-Entry (PS100001)
E. coli Selection: Kanamycin (25 ug/mL)
ORF Nucleotide Sequence: >RC229498 representing NM_001166538
Red=Cloning site Blue=ORF Green=Tags(s)

TTTTGTAATACGACTCACTATAGGGCGGCCGGAATTCGTCGACTGGATCCGGTACCGAGGAGATCTGCC
GCC**CGATCGCC**

ATGTTATCGCGGAATGATGTAAGAGGCTGGAGAGGAGCTGGCACCTTCTGTCCTGGTCCCAGGCCAGG
GCTCCTCAGAGCAGGAATCCACTATGCATCTCTGCAGAGGCTGCCAGTGCCAGCAGTGAGGGACCTGA
CCTCAGGGGCAGAGACAAGAGAGGCACCAAGGAGGATCCAAGAGCTGACTATGCCTGCATTGCTGAGAAC
AAACCCACC

ACGCGTACGCGGCCGCTCGAGCAGAAACTCATCTCAGAAGAGGATCTGGCAGCAAATGATATCCTGGATT
ACAAGGATGACGACGATAAGGTTTAA

Protein Sequence: >RC229498 representing NM_001166538
Red=Cloning site Green=Tags(s)

MLSRNDVKRLERSWHLLSWSQAQGSSEQELHYASLQRLPVPSSEGPLRGRDKRGTKEPRADYACIAEN
KPT

TRTRPLEQKLISEEDLAANDILDYKDDDDKV

Chromatograms: https://cdn.origene.com/chromatograms/mk8102_e12.zip

Restriction Sites: Sgfl-MluI



[View online »](#)

Cloning Scheme:


ACCN: NM_001166538

ORF Size: 219 bp

OTI Disclaimer: The molecular sequence of this clone aligns with the gene accession number as a point of reference only. However, individual transcript sequences of the same gene can differ through naturally occurring variations (e.g. polymorphisms), each with its own valid existence. This clone is substantially in agreement with the reference, but a complete review of all prevailing variants is recommended prior to use. [More info](#)

OTI Annotation: This clone was engineered to express the complete ORF with an expression tag. Expression varies depending on the nature of the gene.

Components: The ORF clone is ion-exchange column purified and shipped in a 2D barcoded Matrix tube containing 10ug of transfection-ready, dried plasmid DNA (reconstitute with 100 ul of water).

Reconstitution Method:

1. Centrifuge at 5,000xg for 5min.
2. Carefully open the tube and add 100ul of sterile water to dissolve the DNA.
3. Close the tube and incubate for 10 minutes at room temperature.
4. Briefly vortex the tube and then do a quick spin (less than 5000xg) to concentrate the liquid at the bottom.
5. Store the suspended plasmid at -20°C. The DNA is stable for at least one year from date of shipping when stored at -20°C.

RefSeq: [NM_001166538.1](#), [NP_001160010.1](#)

RefSeq Size: 560 bp

RefSeq ORF: 222 bp

Locus ID: 7940

UniProt ID: [O00453](#)

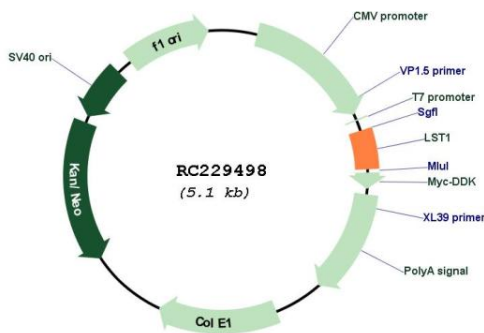
Cytogenetics: 6p21.33

Protein Families: Transmembrane

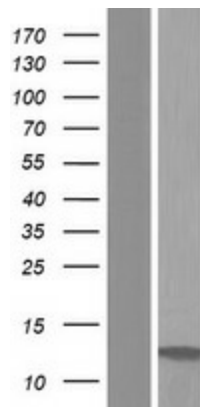
MW: 8.4 kDa

Gene Summary: The protein encoded by this gene is a membrane protein that can inhibit the proliferation of lymphocytes. Expression of this gene is enhanced by lipopolysaccharide, interferon-gamma, and bacteria. Several transcript variants encoding different isoforms have been found for this gene. [provided by RefSeq, Oct 2011]

Product images:



Circular map for RC229498



Western blot validation of overexpression lysate (Cat# [LY432498]) using anti-DDK antibody (Cat# [TA50011-100]). Left: Cell lysates from untransfected HEK293T cells; Right: Cell lysates from HEK293T cells transfected with RC229498 using transfection reagent MegaTran 2.0 (Cat# [TT210002]).