

Product datasheet for RC229479

NBPF10 (NM_001039703) Human Tagged ORF Clone

Product data:

Product Type:	Expression Plasmids
Product Name:	NBPF10 (NM_001039703) Human Tagged ORF Clone
Tag:	Myc-DDK
Symbol:	NBPF10
Synonyms:	AB6; AG1; NBPF9
Vector:	pCMV6-Entry (PS100001)
E. coli Selection:	Kanamycin (25 ug/mL)
Cell Selection:	Neomycin
ORF Nucleotide Sequence:	>RC229479 representing NM_001039703 Red=Cloning site Blue=ORF Green=Tags(s)

TTTTGTAATACGACTCACTATAGGGCGCCGGGAATTCGTCGACTGGATCCGGTACCGAGGAGATCTGCC
GCC**CGATCGCC**

ATGGTGGTATCAGCCGGCCCTTGGTCCAGTGAGAAGGCAGAGATGAACATTCTAGAAATCAACGAGACAT
TGC GCCCCAGCTGGCAGAGAAGAAACAGCAGTTCAGAAACCTCAAAGAGAAATGTTTTCTAACTCAACT
GGCCGGCTTCTGGCCAACCGACAGAAGAAATACAAGTATGAAGAGTGTAAAGACCTCATAAAATTTATG
CTGAGGAATGAGCGACAGTTCAGGAGGAGAAGCTTGCAGAGCAGCTGAAGCAAGCTGAGGAGCTCAGGC
AATATAAAGTCCCTAGTTCCTCAGGAACGAGAGCTGACCCAGCTAAGGAGAAGTTACGGGAAGGGAG
AGATGCCTCCCGCTCATTGTATGAGCATCTCCAGGCCCTCCTCACTCCGGATGAGCCGGACAAGTCCAG
GGCAGGACCTCCAAGAACAGCTGGCTGAGGGGTGTAGACTGGCAGCAGCCTTGTCCAAAAGCTCAGCC
CAGAAAATGACGAAGATGAGGATGAAGATGTTCAAGTTGAGGAGGCTGAGAAAAGTACTGGAATCATCTGC
CCCCAGGGAGGTGCAGAAGGCTGAAGAGAGCAAAGTCCCTGAGGACTCACTGGAGGAATGTGCCATCACT
TGTTCAAATAGCCACGGCCCTTGTGACTCCAACCAGCCTCACAAGAACATCAAAATCACATTTGAGGAAG
ACGAAGTCAACTCAACTCTGGTTGTAGACAGAGAATCCTCATGATGAATGTCAGGATGCTCTAAACAT
TCTCCCAGTCCCTGGCCCACTTCTGCCACAACGTCAGCATGGTGGTATCAGCCGGCCCTTTGTCC
AGCGAGAAGGCAGAGATGAACATTCTAGAAATCAATGAGAAATTGCGCCCCAGCTGGCAGAGAAGAAAC
AGCAGTTCAGAAACCTCAAAGAGAAATGTTTTCTAACTCAACTGTCCGGCTTCTGGCCAACCAACAGAA
GAAATACAAATATGAAGAGTGCAAAGACCTCATAAAATTTATGCTGAGGAATGAGCGACAGTTCAAGGAG
GAGAAGCTTGCAGAGCAGCTCAAGCAAGCTGAGGAGCTCAGGCAATATAAAGTCTGGTTACGCTCAGG
AACGAGAGCTGACCCAGTTAAAGGAGAAGTTACGGGAAGGGAGAGATGCCTCCCGCTCATTGAATGAGCA
TCTCCAGGCCCTCCTCACTCCGTATGAGCCGACAAGTCCAGGGGCAGGACCTCCAAGAACAGCTGGCT
GAGGGGTGTAGACTGGCAGCAGCCTTGTCCAAAAGCTCAGCCAGAAAATGACAACGATGACGATGAAG
ATGTTCAAGTTGAGGTGGCTGAGAAAAGTGCAGAAATCATCTGCCCCAGGGAGATGCAGAAGGCTGAAGA
AAAGGAAGTCCCTGAGGACTCACTGGAGGAATGTGCCATCACTTATTCAAATAGCCATGGCTCTTATGAC
TCCAACCAGCCACATAGGAAAACCAAAATCACATTTGAGGAAGACAAAGTCGACTCAACTCTCATTGGCT



[View online »](#)

CATCCTCTCATGTTGAATGGGAGGATGCTGTACACATTATCCAGAAAATGAAAGTGATGATGAGGAAGA
 GGAAGAAAAAGGGCCAGTGTCTCCAGGAATCTGCAGGAGTCTGAAGAGGAGGAAGTCCCCAGGAGTCC
 TGGGATGAAGGTTATTGACTCTCTCAATTCCTCTGAAATGTTGGCCTCGTACCAGTCTTACAGCAGCA
 CATTCTACTCATTAGAGGAACAGCAAGTCTGCATGGCTGTTGACATAGGCAGACATCGGTGGGATCAAGT
 GAAAAAGGAGGACCAAGAGGCAACAGGTCCCAGGCTCAGCAGGGAGCTGCTGGATGAGAAAGGGCCTGAA
 GTCTTCCAGGACTCACAGGATAGATGTTATTCAACTCCTTCAGGTTGTCTTGAAGTACTGACTGACTCATGCC
 AGCCCTACAGAAGTGCCTTTTACATATTGGAGCAACAGCGTGTGGCTTGGCTATTGACATGGATGAAAT
 TGAAAAGTACCAAGAAGTGGAAAGAAGACCAAGACCCATCATGCCCCAGGCTCAGCAGGGAGCTGCTGGAT
 GAGAAAGAGCCTGAAGTCTTGCAGGACTCACTGGATAGATGTTATTGACTCCTTCAGGTTATCTTGAAC
 TGCTGACTTAGGCCAGCCCTACAGCAGTGTGTTACTCATTGGAGAACAGTACCTTGGCTTGGCTCT
 TGACGTGGACAGAATAAAAAGGACCAAGAAGAGGAAGAAGACCAAGGCCACCATGCCCCAGGCTCAGC
 AGGGAGCTGCTGGAGGTAGTAGCCTGAAGTCTTGCAGGACTCACTGGATAGATGTTATTCAACTCCTT
 CCAGTTGTCTTGAACAGCCTGACTCCTGCCAGCCCTATGGAAGTTCCTTTATGCATTGGAGAAAAACA
 TGTGGCTTTTCTTGGCTGGGAGAAATGAAAAGAAGGGGAAGGGGAAGAAAAGAAGGGGAAGAAGA
 TCAAAGAAGGAAAGAAGAAGGGGAAGAAAAGAAGGGGAAGAAGATCAAACCCACCATGCCCCAGGCTCA
 GCAGGGAGCTGCTGGATGAGAAAGGGCCTGAAGTCTTGCAGGACTCACTGGATAGATGTTATTCAACTCC
 TTCAGGTTGTCTTGAAGTACTGACTGACTCATGCCAGCCCTACAGAAGTGCCTTTTATGTATTGGAGCAACAG
 CGTGTGGCTTCGCTGTTGACATGGATGAAATTGAAAAGTACCAAGAAGTGAAGAAGACCAAGACCCAT
 CATGCCCCAGGCTCAGCAGGGAGCTGCTGGATGAGAAAGAGCCTGAAGTCTTGCAGGACTCACTGGATAG
 ATGTTATTGACTCCTTCAGGTTATCTTGAAGTGCCTGACTTAGGCCAGCCCTACAGCAGTGTGTTTAC
 TCATTGGAGAACAGTACCTTGGCTTGGCTCTTGCAGTGGACAGAATAAAAAGGACCAAGAAGAGGAAG
 AAGACCAAGGCCACCATGCCCCAGGCTCAGCAGGGAGCTGCTGGAGGTAGTAGACCTGAAGTCTTGA
 GACTCACTGGATAGATGTTATTCAACTCCTTCAGTGTCTTGAACAGCCTGACTCCTGCCAGCCCTAT
 GGAAGTTCCTTTTATGCATTGGAGGAAAAACATGTTGGCTTTTCTTGGCTGGGAGAAATGAAAAGA
 AGGGGAAGGGGAAGAAAAGAAGGGGAAGAAGATCAAAGAAGGAAAGAAGAAGGGGAAGAAAAGAAGGGGA
 AGAAGATCAAACCCACCATGCCCCAGGCTCAGCAGGGAGCTGCTGGATGAGAAAGGGCCTGAAGTCTTGA
 CAGGACTCACTGGATAGATGTTATTCAACTCCTTCAGGTTGTCTTGAAGTACTGACTGACTCATGCCAGCCCT
 ACAGAAGTGCCTTTTATGTATTGGAGCAACAGCGTGTGGCTTCGCTGTTGACATGGATGAAATTGAAAA
 GTACCAAGAAGTGAAGAAGACCAAGACCCATCATGCCCCAGGCTCAGCAGGGAGCTGCTGGATGAGAAA
 GAGCCTGAAGTCTTGCAGGACTCACTGGATAGATGTTATTGACTCCTTCAGGTTATCTTGAAGTGCCTG
 ACTTAGGCCAGCCCTACAGCAGTGTGTTACTCATTGGAGAACAGTACCTTGGCTTGGCTCTTGCAGT
 GGACAGAATAAAAAGGACGAAGAAGAGGAAGAAGACCAAGACCCACCATGCCCCAGGCTCAGCAGGGAG
 CTGCTGGAGGTAGTAGCCCTGAAGTCTTGCAGGACTCACTGGATAGATGTTATTCAACTCCTTCAGT
 GTCTTGAACAGCCTGACTCCTGCCAGCCCTATGGAAGTTCCTTTTATGCATTGGAGGAAAAACATGTTGG
 CTTTTCTTGGCTGGGAGAAATGAAAAGAAGGGGAAGGGGAAGAAAAGAAGGGGAAGAAGATCAAAG
 AAGGAAAGAAGAAGGGGAAGAAAAGAAGGGGAAGAAGATCAAACCCACCATGCCCCAGGCTCAGCAGGG
 AGCTGCTGGATGAGAAAGGGCCTGAAGTCTTGAAGACTCACTGGATAGATGTTATTCAACTCCTTCAGG
 TTGCTTGAAGTACTGACTCATGCCAGCCCTACAGAAGTGCCTTTTATGTATTGGAGCAACAGCGTGT
 GGCATGGCTGTTGACATGGATGAAATTGAAAAGTACCAAGAAGTGAAGAAGACCAAGACCCATCATGCC
 CCAGGCTCAGCAGGGAGCTGCTGGATGAGAAAGAGCCTGAAGTCTTGCAGGACTCACTGAATAGATGTTA
 TTCGACTCCTTCAGGTTATCTTGAAGTGCCTGACTTAGGCCAGCCCTACAGCAGTGTGTTACTCATTG
 GAGGAACAGTACCTTGGCTTGGCTCTTGCAGTGGACAGAATAAAAAGGACCAAGAAGAGGAAGAAGACG
 AAGACCAAGACCCACCATGCCCCAGGCTCAGCAGGGAGCTGCTGGAGGTAGTAGCCTGAAGTCTTGA
 GGACTCACTGGATAGATGTTATTCAACTCCTTCAGTGTCTTGAACAGCCTGACTCCTGCCAGCCCTAT
 GGAAGTTCCTTTTATGCATTGGAGGAAAACATGTTGGCTTTTCTTGGCTGGGAGAAATGAAAAGA
 AGGGGAAGGGGAAGAAAAGAAGGGGAAGAAGATCAAAGAAGGAAAGAAGAAGGGGAAGAAAAGAAGGGGA
 AGAAGATCAAACCCACCATGCCCCAGGCTCAGCAGGGAGCTGCTGGATGAGAAAGGGCCTGAAGTCTTGA
 CAGGACTCACTGGATAGATGTTATTCAACTCCTTCAGGTTGTCTTGAAGTACTGACTGACTCATGCCAGCCCT
 ACAGAAGTGCCTTTTATGTATTGGAGCAACAGCATGTTGGCTTGGCTGTTGACATGGATGAAATTGAAAA
 GTACCAAGAAGTGAAGAAGACCAAGACCCATCATGCCCCAGGCTCAGCAGGGAGCTGCTGGATGAGAAA
 GAGCCTGAAGTCTTGCAGGACTCACTGGATAGATGTTATTGACTCCTTCAGGTTATCTTGAAGTGCCTG
 ACTTAGGCCAGCCCTACAGCAGTGTGTTACTCATTGGAGAACAGTACCTTGGCTTGGCTCTTGCAGT

GGACAGAATTA AAAAGGACCAAGAAGAGGAAGAAGACCAAGGCCACCATGCCCCAGGCTCAGCAGGGAG
 CTGCTGGAGGTAGTAGAGCCTGAAGTCTTGACAGGACTCACTGGATAGATGTTATTCAACTCCTTCCAGTT
 GTCTTGAACAGCCTGACTCCTGCCAGCCATGGAAGTTCCTTTTATGCATTGGAGGAAAACCATGTTGG
 CTTTTCTTGTGACGTGGGAGAAATTGAAAAGAAGGGGAAGGGGAAGAAAAGAAGGGGAAGAAGATCAAAG
 AAGGAAAAGAAGGGGAAGAAAAGAAGGGGAAGAAGATCAAACCCACCATGCCCCAGGCTCAGCAGGG
 AGCTGCTGGATGAGAAAGGGCCTGAAGTCTTGACAGGACTCACTGGATAGATGTTATTCAACTCCTCAGG
 TTGCTTGAAGTCACTGACTCATGCCAGCCCTACAGAAGTGCCTTTTATGTATTGGACCAACAGCATGTT
 GGCTTGGCTGTTGACATGGATGAAATTGAAAAGTACCAAGAAGTGAAGAAGACCAAGACCCATCATGCC
 CCAGGCTCAGCAGGGAGCTGCTGGATGAGAAAAGCCTGAAGTCTTGACAGGACTCACTGGATAGATGTTA
 TTCGACTCCTCAGGTTATCTTGAAGTGCCTGACTTAGGCCAGCCCTACAGCAGTGTGTTACTCATTG
 GAGGAACAGTACCTTGGCTTGGCTTGTGACGTGGACAGAATTA AAAAGGACCAAGAAGAGGAAGAAGACC
 AAGGCCACCATGCCCCAGGCTCAGCAGGGAGCTGCTGGAGGTAGTAGAGCCTGAAGTCTTGACAGGACTC
 ACTGGATAGATGTTATTCAACTCCTTCCAGTTGTCTTGAACAGCCTGACTCCTGCCAGCCATGGAAGT
 TCCTTTTATGCATTGGAGAAAACCATGTTGGCTTTTCTTGTGACGTGGGAGAAATTGAAAAGAAGGGGA
 AGGGGAAGAAAAGAAGGGGAAGAAGATCAAAGAAGGAAAAGAAGGGGAAGAAAAGAAGGGGAAGAAGA
 TCAAACCCACCATGCCCCAGGCTCAGCAGGGAGCTGCTGGATGAGAAAGGGCCTGAAGTCTTGACAGGAC
 TCACTGGATAGATGTTATTCAACTCCTTCAAGTTGTCTTGAAGTCACTGACTCATGCCAGCCCTACAGAA
 GTGCCTTTTATGTATTGGAGCAACAGCATGTTGGCTTGGCTGTTGACATGGATGAAATTGAAAAGTACCA
 AGAAGTGAAGAAGACCAAGACCCATCATGCCCCAGGCTCAGCAGGGAGCTGCTGGATGAGAAAAGCCT
 GAAGTCTTGACAGGACTCACTGGATAGATGTTATTGACTCCTCAGGTTATCTTGAAGTGCCTGACTTAG
 GCCAGCCCTACAGCAGTGTCTTACTCATTGGAGAACAGTACCTTGGCTTGGCTTGTGACGTGGACAG
 AATTA AAAAGGACCAAGAAGAGGAAGAAGACCAAGGCCACCATGCCCCAGGCTCAGCAGGGAGCTGCTG
 GAGGTAGTAGAGCCTGAAGTCTTGACAGGACTCACTGGATAGATGTTATTCAACTCCTTCCAGTTGTCTG
 AACAGCCTGACTCCTGCCAGCCCTATGGAAGTTCCTTTTATGCATTGGAGGAAAACCATGTTGGCTTTTC
 TCTTGACGTGGGAGAAATTGAAAAGAAGGGGAAGGGGAAGAAAAGAAGGGGAAGAAGATCAAAGAAGGAA
 AGAAGAAGGGGAAGAAAAGAAGGGGAAGAAGATCAAACCCACCATGCCCCAGGCTCAGCAGGGAGCTGC
 TGGATGAGAAAGGGCCTGAAGTCTTGACAGGACTCACTGGATAGATGTTATTCAACTCCTTCAAGTTGTCT
 TGAAGTCACTGACTCATGCCAGCCCTACAGAAGTGCCTTTTATGTATTGGAGCAACAGCATGTTGGCTT
 GCTGTTGACATGGATGAAATTGAAAAGTACCAAGAAGTGAAGAAGACCAAGACCCATCATGCCCCAGGC
 TCAGCAGGGAGCTGCTGGATGAGAAAAGCCTGAAGTCTTGACAGGACTCACTGGATAGATGTTATTGAC
 TCCTTCAAGTTATCTTGAAGTGCCTGACTTAGGCCAGCCCTACAGCAGTGTGTTACTCATTGGAGGAA
 CAGTACCTTGGCTTGGCTTGTGACGTGGACAGAATTA AAAAGGACCAAGAAGAGGAAGAAGACCAAGGCC
 CACCATGCCCCAGGCTCAGCAGGGAGCTGCTGGAGGTAGTAGAGCCTGAAGTCTTGACAGGACTCACTGGA
 TAGATGTTATTCAACTCCTTCCAGTTGTCTTGAACAGCCTGACTCCTGCCAGCCCTATGGAAGTTCCTTT
 TATGCATTGGAGGAAAACCATGTTGGCTTTTCTTGTGACGTGGGAGAAATTGAAAAGAAGGGGAAGGGGA
 AGAAAAGAAGGGGAAGAAGATCAAAGAAGGAAAAGAAGGGGAAGAAAAGAAGGGGAAGAAGATCAA
 CCCACCATGCCCCAGGCTCAGCAGGGAGCTGCTGGATGAGAAAGGGCCTGAAGTCTTGACAGGACTCACTG
 GATAGATGTTATTCAACTCCTTCAAGTTGTCTTGAAGTCACTGACTCATGCCAGCCCTACAGAAGTGCCT
 TTTATGTATTGGAGCAACAGCATGTTGGCTTGGCTGTTGACATGGATGAAATTGAAAAGTACCAAGAAGT
 GGAAGAAGACCAAGACCCATCATGCCCCAGGCTCAGCAGGGAGCTGCTGGATGAGAAAAGCCTGAAGTCT
 TTGACAGGACTCACTGGATAGATGTTATTGACTCCTTCAAGTTATCTTGAAGTGCCTGACTTAGGCCAGC
 CCTACAGCAGTGTGTTACTCATTGGAGAACAGTACCTTGGCTTGGCTTGTGACGTGGACAGAATTA
 AAAGGACCAAGAAGAGGAAGAAGACCAAGGCCACCATGCCCCAGGCTCAGCAGGGAGCTGCTGGAGGTA
 GTAGAGCCTGAAGTCTTGACAGGACTCACTGGATAGATGTTATTCAACTCCTTCCAGTTGTCTTGAACAGC
 CTGACTCCTGCCAGCCCTATGGAAGTTCCTTTTATGCATTGGAGGAAAACATGTTGGCTTTTCTTTGA
 CGTGGGAGAAATTGAAAAGAAGGGGAAGGGGAAGAAAAGAAGGGGAAGAAGATCAAAGAAGGAAAAGA
 AGGGGAAGAAAAGAAGGGGAAGAAGATCAAACCCACCATGCCCCAGGCTCAGCAGGGAGCTGCTGGATG
 AGAAAGGGCCTGAAGTCTTGACAGGACTCACTGGATAGATGTTATTCAACTCCTTCAAGTTGTCTTGAAGT
 GACTGACTCATGCCAGCCCTACAGAAGTGCCTTTTATGTATTGGAGCAACAGCATGTTGGCTTGGCTGTT
 GACATGGATGAAATTGAAAAGTACCAAGAAGTGAAGAAGACCAAGACCCATCATGCCCCAGGCTCAGCA
 GGGAGCTGCTGGATGAGAAAAGCCTGAAGTCTTGACAGGACTCACTGGATAGATGTTATTGACTCCTTCA
 AGGTTATCTTGAAGTGCCTGACTTAGGCCAGCCCTACAGCAGTGTGTTACTCATTGGAGGAACAGTAC

CTTGGCTTGGCTCTTGACGTGGACAGAATTA AAAAGGACCAAGAAGAGGAAGAAGACCAAGGCCACCAT
 GCCCCAGGCTCAGCAGGGAGCTGCTGGAGGTAGTAGAGCCTGAAGTCTTGCAAGGACTCACTGGATAGATG
 TTATCAACTCCTCCAGTTGTCTTGAACAGCCTGACTCCTGCCAGCCCTATGGAAGTTCCTTTTATGCA
 TTGGAGGAAAAACATGTTGGCTTTTCTCTTGACGTGGGAGAAATTGAAAAGAAGGGGAAGGGGAAGAAAA
 GAAGGGGAAGAAGATCAAAGAAGGAAAGAAGAAGGGGAAGAAAAGAAGGGGAAGAAGATCAAACCCACC
 ATGCCCCAGGCTCAGCAGGGAGCTGCTGGATGAGAAAGGGCCTAAAGTCTTGCAAGGACTCACTGGATAGA
 GTTATTCAACTCCTTCAGGTTGTCTTGAAGTGTGTGACTCATGCCAGCCCTACAGAAGTGCCTTTTATG
 TATTGGAGCAACAGCGTGTGGCTTGGCTTGGCTGTTGACATGGATGAAATTGAAAAGTACCAAGAAGTGAAGA
 AGACCAAGACCCATCATGCCCCAGGCTCAGCAGGGAGCTGCTGGATGAGAAAGGGCCTGAAGTCTTGCAAG
 GACTCACTGGATAGATGTTATTGACTCCTTCAGGTTGTCTTGAAGTGTGTGACTCATGCCAGCCCTACA
 GAAGTGCCTTTACATATTGGAGCAACAGCGTGTGGCTTGGCTGTTGACATGGATGAAATTGAAAAGTGA
 CCAAGAAGTGAAGAAGACCAAGACCCATCATGCCCCAGGCTTAGCAGGGAGCTGCTGGATGAGAAAGAG
 CCTGAAGTCTTGCAAGGACTCACTGGATAGATGTTATTGACTCCTTCAGGTTATCTTGAAGTGCCTGACT
 TAGGCCAGCCCTACAGCAGTGTGTTACTCATTGGAGGAACAGTACCTTGGCTTGGCTCTTGACGTGGA
 CAGAATTA AAAAGGACCAAGAAGAGGAAGAAGACCAAGGCCACCATGCCCCAGGCTCAGCAGGGAGCTG
 CTGGAGGTAGTAGAGCCTGAAGTCTTGCAAGGACTCACTGGATAGATGTTATTCAACTCCTCCAGTTGTC
 TTGAACAGCCTGACTCCTGCCAGCCCTATGGAAGTTCCTTTTATGCATTGGAGGAAAAACATGTTGGCTT
 TTCTCTTGACGTGGGAGAAATTGAAAAGAAGGGGAAGGGGAAGAAAAGAAGGGGAAGAAGATCAAAGAAG
 GAAAGAAGAAGGGGAAGAAAAGAAGGGGAAGAAGATCAAACCCACCATGCCCCAGGCTCAGCAGGGAGC
 TGCTGGATGAGAAAGGGCCTGAAGTCTTGCAAGGACTCACTGGATAGATGTTATTCAACTCCTTCAGGTTG
 TCTTGAAGTGTGTGACTCATGCCAGCCCTACAGAAGTGCCTTTTATGATTGGAGCAACAGCATGTTGGC
 TTGGCTGTTGACATGGATGAAATTGAAAAGTACCAAGAAGTGAAGAAGACCAAGACCCATCATGCCCC
 GGCTCAGCAGGGAGCTGCTGGATGAGAAAGAGCCTGAAGTCTTGCAAGGACTCACTGGATAGATGTTATT
 GACTCCTTCAGGTTATCTTGAAGTGCCTGACTTAGGCCAGCCCTACAGCAGTGTGCTTTACTCATTGTTGAG
 GAACAGTACCTTGGCTTGGCTCTTGACGTGGACAAAATTGAAAAGAAGGGGAAGGGGAAAAAAGAAGGG
 GAAGAAGATCAAAGAAGGAAAGAAGAAGGGGAAGAAAAGAAGGGGAAGAAGATCAAACCCACCATGCC
 CAGGCTCAACGGCGTGTGATGGAAGTGAAGAGCGTGAAGTCTTACAGGACTCACTGGATAGATGTTAT
 TCGACTCCGTCAATGTACTTTGAAGTACCTGACTCATTCCAGCACTACAGAAGTGTGTTTACTCATTG
 AGGAACAGCACATCAGCTTCGCCCTTACGTGGACAATAGGTTTTTACTTTGACGGTGACAAGTCTCCA
 CCTGGTGTCCAGATGGGAGTCATATCCACAA

ACGCGTACGCGGCCGCTCGAGCAGAACTCATCTCAGAAGAGGATCTGGCAGCAAATGATATCCTGGATT
 ACAAGGATGACGACGAT AAGGTTTAA

Protein Sequence:

>RC229479 representing NM_001039703
 Red=Cloning site Green=Tags(s)

MVVSAGPWSSEKAEMNILEINETLRPQLAEKKQQFRNLKEKCFLTQLAGFLANRQKKYKYECKDLIKFM
 LRNERQFKEEKLAELKQAEELRQYKVLVHSQERELTQLREKLREGRDASRSLYEHLQALLTPDEPKSQ
 GQDLQEQLAEGCRLAQHLVQKLSPENDEDEDVQVEAEKVLLESSAPREVQKAEESKVPEDSLEECAIT
 CSNSHGPCDSNQPHKNIKITFEEDVNSTLVVDRESSHDECQDALNLPVPGPTSSATNVSVMVVSAGPLS
 SEKAEMNILEINEKLRPQLAEKKQQFRNLKEKCFLTQLSGFLANQQKKYKYECKDLIKFMLRNERQFKE
 EKLAELKQAEELRQYKVLVHAQERELTQLKEKLREGRDASRSLNEHLQALLTPYEPDKSQGQDLQEQLA
 EGCRLAQHLVQKLSPENDNDDDEDVQVEAEKVLKSSAPREMOKAEKEVPEDSLEECAITYSNHSGSYD
 SNQPHRKTKITFEEDKVDSTLIGSSSHVEWEDAVHIIPENESDDEEEEEKGPVSPRNLQSEEEEEVPQES
 WDEGYSTLSIPPEMLASYQSYSTFHSLEEQVCMVAVDIGRHRWDQVKKEDQEATGPRLSRELLDEKQPE
 VFQDSQDRCYSTPSGCLELTDSCQPYRSFYILEQQRVGLAIDMDEIEKYQEVEEDQDPSCPRLSRELLD
 EKEPEVLQDSLDRCYSTPSGYLELPDLGQPYSSAVYSLEEQYGLALDVEDRIKDKQEEEEEQGPPCPRLS
 RELLEVVEPEVLQDSLDRCYSTPSSCLEQPDSCQPYGSSFYALEEKHVGFSLDVGEIEKKGKGRRRRR
 SKKERRRRGRKEGEDQNPPCPRLSRELLDEKQPEVLQDSLDRCYSTPSGCLELTDSCQPYRSFYVLEQQ
 RVGFAVMDIEKYQEVEEDQDPSCPRLSRELLDEKQPEVLQDSLDRCYSTPSGYLELPDLGQPYSSAVY
 SLEEQYGLALDVEDRIKDKQEEEEEQGPPCPRLSRELLEVVEPEVLQDSLDRCYSTPSSCLEQPDSCQPY
 GSSFYALEEKHVGFSLDVGEIEKKGKGRRRRRSKKERRRRGRKEGEDQNPPCPRLSRELLDEKQPEVL

QDSLDRCYSTPSGCLLELTDSCQPYRSFYVLEQQRVGFAVDMDEIEKYQEVEEDQDPSCPRLSRELLDEK
 EPEVLQDSLDRCYSTPSGYLELPLDQGQPYSSAVYSLEEQYLGLALDVDRIKKDEEEEDQDPPCPRLSRE
 LLEVVAPEVLQDSLDRCYSTPSSCLEQPDSCQPYGSSFYALEEKHVGFSLDVGEIEKKGKGGKRRGRRSK
 KERRRRGRKEGEEDQNPPCPRLSRELLDEKQPEVLQDSLDRCYSTPSGCLLELTDSCQPYRSFYVLEQQRV
 GMAVDMDEIEKYQEVEEDQDPSCPRLSRELLDEKEPEVLQDSLDRCYSTPSGYLELPLDQGQPYSSAVYSL
 EEQYLGLALDVDRIKKQDEEEEDQDPPCPRLSRELLLEVVEPEVLQDSLDRCYSTPSSCLEQPDSCQPY
 GSSFYALEENHVGFSLDVGEIEKKGKGGKRRGRRSKERRRRGRKEGEEDQNPPCPRLSRELLDEKQPEVL
 QDSLDRCYSTPSGCLLELTDSCQPYRSFYVLEQQHVGLAVDMDEIEKYQEVEEDQDPSCPRLSRELLDEK
 EPEVLQDSLDRCYSTPSGYLELPLDQGQPYSSAVYSLEEQYLGLALDVDRIKKQDEEEEDQDPPCPRLSRE
 LLEVVEPEVLQDSLDRCYSTPSSCLEQPDSCQPYGSSFYALEENHVGFSLDVGEIEKKGKGGKRRGRRSK
 KERRRRGRKEGEEDQNPPCPRLSRELLDEKQPEVLQDSLDRCYSTPSGCLLELTDSCQPYRSFYVLEQQHV
 GLAVDMDEIEKYQEVEEDQDPSCPRLSRELLDEKEPEVLQDSLDRCYSTPSGYLELPLDQGQPYSSAVYSL
 EEQYLGLALDVDRIKKQDEEEEDQDPPCPRLSRELLLEVVEPEVLQDSLDRCYSTPSSCLEQPDSCQPYGS
 SFYALEENHVGFSLDVGEIEKKGKGGKRRGRRSKERRRRGRKEGEEDQNPPCPRLSRELLDEKQPEVLQD
 SLDRCYSTPSGCLLELTDSCQPYRSFYVLEQQHVGLAVDMDEIEKYQEVEEDQDPSCPRLSRELLDEKEP
 EVLQDSLDRCYSTPSGYLELPLDQGQPYSSAVYSLEEQYLGLALDVDRIKKQDEEEEDQDPPCPRLSRELL
 EVVEPEVLQDSLDRCYSTPSSCLEQPDSCQPYGSSFYALEENHVGFSLDVGEIEKKGKGGKRRGRRSKKE
 RRRGRKEGEEDQNPPCPRLSRELLDEKQPEVLQDSLDRCYSTPSGCLLELTDSCQPYRSFYVLEQQHVGL
 AVDMDEIEKYQEVEEDQDPSCPRLSRELLDEKEPEVLQDSLDRCYSTPSGYLELPLDQGQPYSSAVYSLEE
 QYLGLALDVDRIKKQDEEEEDQDPPCPRLSRELLLEVVEPEVLQDSLDRCYSTPSSCLEQPDSCQPYGSSF
 YALEENHVGFSLDVGEIEKKGKGGKRRGRRSKERRRRGRKEGEEDQNPPCPRLSRELLDEKQPEVLQDSL
 DRCYSTPSGCLLELTDSCQPYRSFYVLEQQHVGLAVDMDEIEKYQEVEEDQDPSCPRLSRELLDEKEPEV
 LQDSLDRCYSTPSGYLELPLDQGQPYSSAVYSLEEQYLGLALDVDRIKKQDEEEEDQDPPCPRLSRELL
 VEPEVLQDSLDRCYSTPSSCLEQPDSCQPYGSSFYALEEKHVGFSLDVGEIEKKGKGGKRRGRRSKERR
 RGRKEGEEDQNPPCPRLSRELLDEKQPEVLQDSLDRCYSTPSGCLLELTDSCQPYRSFYVLEQQHVGLAV
 DMDEIEKYQEVEEDQDPSCPRLSRELLDEKEPEVLQDSLDRCYSTPSGYLELPLDQGQPYSSAVYSLEEQY
 LGLALDVDRIKKQDEEEEDQDPPCPRLSRELLLEVVEPEVLQDSLDRCYSTPSSCLEQPDSCQPYGSSFYA
 LEEKHVGFSLDVGEIEKKGKGGKRRGRRSKERRRRGRKEGEEDQNPPCPRLSRELLDEKQPKVLQSLDR
 CYSTPSGCLLELTDSCQPYRSFYVLEQQRVGLAVDMDEIEKYQEVEEDQDPSCPRLSRELLDEKQPEVLQ
 DSLDRCYSTPSGCLLELTDSCQPYRSFYVLEQQRVGLAVDMDEIEKYQEVEEDQDPSCPRLSRELLDEKE
 PEVLQDSLDRCYSTPSGYLELPLDQGQPYSSAVYSLEEQYLGLALDVDRIKKQDEEEEDQDPPCPRLSRELL
 LEVVEPEVLQDSLDRCYSTPSSCLEQPDSCQPYGSSFYALEEKHVGFSLDVGEIEKKGKGGKRRGRRSK
 ERRRRGRKEGEEDQNPPCPRLSRELLDEKQPEVLQDSLDRCYSTPSGCLLELTDSCQPYRSFYVLEQQHV
 GLAVDMDEIEKYQEVEEDQDPSCPRLSRELLDEKEPEVLQDSLDRCYSTPSGYLELPLDQGQPYSSAVYSLE
 EQYLGLALDVDRIKKQDEEEEDQDPPCPRLSRELLLEVVEPEVLQDSLDRCYSTPSSCLEQPDSCQPYGSS
 FQHYRSVYFEEQHISFALYVDNRFFTLTVTSLHLVFMGVIFPQ

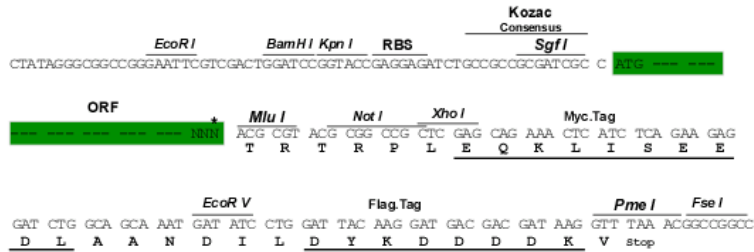
TRTRPLEQKLISEEDLAANDILDYKDDDDKV

Restriction Sites:

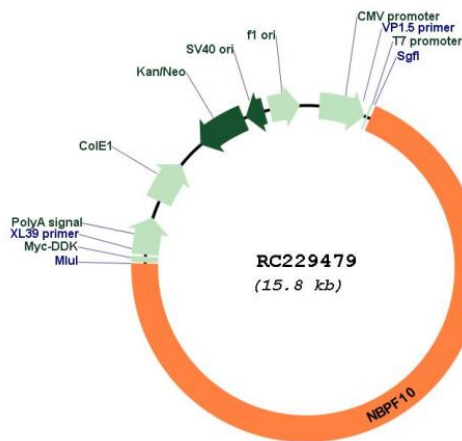
Sgfl-MluI

Cloning Scheme:

Cloning sites used for ORF Shuttling:



* The last codon before the Stop codon of the ORF

Plasmid Map:


ACCN:	NM_001039703
ORF Size:	10884 bp
OTI Disclaimer:	<p>Due to the inherent nature of this plasmid, standard methods to replicate additional amounts of DNA in E. coli are highly likely to result in mutations and/or rearrangements. Therefore, OriGene does not guarantee the capability to replicate this plasmid DNA. Additional amounts of DNA can be purchased from OriGene with batch-specific, full-sequence verification at a reduced cost. Please contact our customer care team at custsupport@origene.com or by calling 301.340.3188 option 3 for pricing and delivery.</p> <p>The molecular sequence of this clone aligns with the gene accession number as a point of reference only. However, individual transcript sequences of the same gene can differ through naturally occurring variations (e.g. polymorphisms), each with its own valid existence. This clone is substantially in agreement with the reference, but a complete review of all prevailing variants is recommended prior to use. More info</p>
OTI Annotation:	This clone was engineered to express the complete ORF with an expression tag. Expression varies depending on the nature of the gene.
Components:	The ORF clone is ion-exchange column purified and shipped in a 2D barcoded Matrix tube containing 10ug of transfection-ready, dried plasmid DNA (reconstitute with 100 ul of water).
Reconstitution Method:	<ol style="list-style-type: none"> 1. Centrifuge at 5,000xg for 5min. 2. Carefully open the tube and add 100ul of sterile water to dissolve the DNA. 3. Close the tube and incubate for 10 minutes at room temperature. 4. Briefly vortex the tube and then do a quick spin (less than 5000xg) to concentrate the liquid at the bottom. 5. Store the suspended plasmid at -20°C. The DNA is stable for at least one year from date of shipping when stored at -20°C.
RefSeq:	<u>NM_001039703.3, NP_001034792.2</u>
RefSeq ORF:	10881 bp
Locus ID:	100132406
Cytogenetics:	1q21.1
MW:	416.21 kDa

Gene Summary:

This gene is a member of the neuroblastoma breakpoint family (NBPF) which consists of dozens of recently duplicated genes primarily located in segmental duplications on human chromosome 1. This gene family has experienced its greatest expansion within the human lineage and has expanded, to a lesser extent, among primates in general. Members of this gene family are characterized by tandemly repeated copies of DUF1220 protein domains. Gene copy number variations in the human chromosomal region 1q21.1, where most DUF1220 domains are located, have been implicated in a number of developmental and neurogenetic diseases such as microcephaly, macrocephaly, autism, schizophrenia, cognitive disability, congenital heart disease, neuroblastoma, and congenital kidney and urinary tract anomalies. Altered expression of some gene family members is associated with several types of cancer. This gene family contains numerous pseudogenes. Alternative splicing results in multiple transcript variants. [provided by RefSeq, Oct 2014]