

## Product datasheet for RC229439

### SCAPER (NM\_020843) Human Tagged ORF Clone

#### Product data:

Product Type:	Expression Plasmids
Product Name:	SCAPER (NM_020843) Human Tagged ORF Clone
Tag:	Myc-DDK
Symbol:	SCAPER
Synonyms:	IDDRP; MSTP063; Zfp291; ZNF291
Mammalian Cell Selection:	Neomycin
Vector:	pCMV6-Entry (PS100001)
E. coli Selection:	Kanamycin (25 ug/mL)
ORF Nucleotide Sequence:	>RC229439 representing NM_020843 Red=Cloning site Blue=ORF Green=Tags(s)

TTTTGTAATACGACTCACTATAGGGCGGCCGGAATTCGTCGACTGGATCCGGTACCGAGGAGATCTGCC  
GCC**CGATCGCC**

ATGATGGCTTCATTCCAGCGCTCCAATAGTCATGACAAAGTAAGGAGAATAGTTGCAGAGGAGGGTCGTA  
CAGCAAGAAACCTAATAGCTTGGAGTGTCCACTAGAAAGCAAAGATGATGATGGAAAACCTAAATGTCA  
AACTGGTGGAAAATCTAAGAGGACCATTCAAGGCACTCATAAACTACTAAACAGAGTACTGCAGTGGAC  
TGTAATAAACATCGTCTACGACTGGAGATAAACACTTTGATAAAAGTCCCACTAAAACAAGGCACCCCTC  
GGAAAATTGATCTAAGAGCTCGATACTGGGCATTTCTTTTGGATAATCTTCGCCGAGCAGTATGAAAT  
CTATGTAACCTTGCGAATCAGATCAGAGTGTGGTCGAATGTAAGGAGGTGCTAATGATGCTGGATAACTAT  
GTAAGAGATTTCAAAGCATTGATTGACTGGATTACGCTTCAGGAAAAGCTAGAGAAGACAGATGCTCAAA  
GCAGACCAACATCATTGGCATGGGAAGTAAAGAAGATGTCTCCGGGACGCCATGTGATTCCAAGTCCATC  
AACAGATAGAATAAATGTAACATCAAAATGCTCGACGAAGCTTAAATTTGGAGGTTCAACTGGCACAGTG  
CCAGCTCCTCGTCTGGCTCCACAGGTGTCAGTTGGGCTGACAAGGTAAGGCTCATACACAGGCTCTA  
CTGCTTCTCAGAAAATAACACCCGCCAGTCTTGCCCAACATGACAGTGCAGAAGGCCTACGCAAAAA  
TGAACGGAAAAGATGCTGAAGGATGGGAGACCGTTCAGAGAGGAAGGCCTATTCGTTCTCGATCAACAGCA  
GTGATGCCAAAAGTTTCATTGGCAACAGAAGCCACAAGATCAAAGGATGACAGTATAAAGAAAATGTAT  
GTCTTTTACCTGATGAAAGCATACAGAAAAGTCAATTTGTTGGAGATGGAACCTTCTAATACTATAGAATC  
TCATCCAAAAGACTCATTACACTCTGTGACCATCCTCTTGCCGAAAAAACCAGTTCACAGTGAGTACA  
TTGGATGATGTGAAGAATTCTGGCAGTATTCGAGACAATTATGTTGAACTTCTGAAATATCTGCTGTCC  
ACATTGATACAGAGTGTGTTTCAGTTATGCTGCAAGCTGGTACACCTCCTTTACAAGTAAATGAAGAAAA  
ATTTCCAGCAGAGAAAAGCAAGGATAGAAAATGAAATGGACCTTCAGATATTTCAAATCCATGGCAGAA  
GTCCTTGCTAAAAAGAAGAGCTAGCAGATCGTCTAGAAAAGGCCAATGAAGAAGCCATTGCTAGTGCTA  
TTGCTGAAGAAGAACAGTAACTAGAGAAATGAAGCTGAAGAAAACAATGATATTAACATTGAAACTGA  
CAACGACAGTGATTTTCTGCCAGCATGGCAGTGGGAGTGTCTTTCTGTGGTATGTCCATGGACTGG



[View online »](#)

AACGATGTCCTTGACAGATTATGAAGCTCGTGAGTCTTGGCGCCAAAATACATCCTGGGGGACATTGTAG  
AAGAAGAACCTGCTAGACCTCCAGGGCATGGAATTCACATGCATGAAAACTTTCTTACCCCTCTCGTAA  
AAGAACAATTGCAGAATCTAAGAAGAAACATGAAGAAAAACAAATGAAAGCACAGCAGCTAAGGGAAAAAG  
TTACGCGAAGAGAAAAACATTGAAGCTTCAGAAATTGTTAGAAAGGGAGAAGGATGTCCGGAAGTGGAAAG  
AAGAATTGCTAGATCAACGACGCAGGATGATGGAAGAAAAATTACTTCATGCTGAGTTTAAAGCGAGAAGT  
GCAGTTACAAGCAATTGTAAAAAAGCACAAGAAGAAGAAGCTAAGGTAATGAAATGCCTTTATAAAT  
ACCCTTGAAGCCAGAAATAACGTCATGATGTTTTATCAAAATTGAAGGAATATGAACAGAGCCTTAATG  
AGCTACAGGAAGAGCGTCAGAGAAGACAGGAAGAAAAAGCAAGCACGTGATGAAGCTGTGCAGGAACGCAA  
GAGAGCTCTAGAGGCAGAGCGGCAGGCCGTGTAAGAATTGTTAATGAAGAGGAAAGAACAAGAGCC  
CGAATTGAACAACAGAGGCAAGAAAAAGGAAAAAGCCCGTGAGGATGCAGCCCGGAAAGAGCTAGAGACA  
GGGAAGAACGATTGGCAGCACTCACAGCTGCTCAACAAGAAGCTATGGAAGAGTTACAGAAAAAATTCA  
GCTCAAGCATGATGAAAGTATTCGAAGGCACATGGAACAGATTGAACAAAGAAAAAGAAAGCTGCTGAG  
CTAAGCAGTGGGCGACATGCAAACTACTGATTATGCCCCAACTGACCCCTTATGAAAGAAAGAAGCAGT  
GTTCTCTCTGCAATGTCCTGATCTTTCAGAGGTATATCTTTTTAGCCATGTTAAAGGGAGAAAAACCA  
GCAAGCCGTGAGAGAGAATACCAGCATCCAGGGCGTGAAGTGTGAGATGAAGAAGTGGAGCATCTTTCC  
TTGAAGAAGTACATTATTGACATTGTGGTTGAAAGTACAGCTCCAGCAGAAGCTTTGAAAGATGGAGAAG  
AGCGGCAAAAAATAAAAAAAGCCAAAAAGATAAAAGCCCGGATGAATTCAGGGCTAAGGAATATGA  
GAGTTTAAAGAAACAAAAATTCTGGCTCTGATTACCTTATAAAGCAAAGCTTCAGCGATTAGCCAAA  
GATCTTCTAAAACAAGTACAAGTTCAAGACAGTGGCTCATGGGCAACAATAAAGTGTCTGCTTTGGATC  
GGACCCTAGGAGAGATCACTAGAATACTGGAAAAAGAGAATGTGGCAGATCAGATTGCATTTCAAGCTGC  
TGGTGGATTAACAGCCCTGAACACATCCTTCAAGCAGTAGTCCAGCCACAAAATGTGAACACAGTTTTA  
AGAATTCCTCCTAAGTCTCTCTGCAATGCAATCAATGTTTACAACCTCACCTGCAATAACTGTTTCAGAAA  
ACTGCAGTGTCTGTTTAGTAACAAGATTACCTTCTTAATGGACCTCCTGATACACCCAGTTGACGGT  
TTATGTTCCAGATGAAAATAAATACTATTTTGGGAGAAAATAAAAATAAACAAGTTTTTGAAGGCTTGACA  
ACTGGACTTCTCAAAGTCAAGTGTGCTGTGGTTTTGGGCTGCCTGATTGCCAATCGACCAGATGGAACTGCC  
AGCCAGCTACCCCAAAAAACCAACACAGGAAATGAAAAACAACCCCTCACAAGGTGATCCTTTTAAACA  
TCGAGTTCAGGACCTTATCAGCTACGTGGTGAACATGGGTCTGATTGACAACTGTGTGCCTGCTTCCTC  
TCGGTGAAGGCCAGTGGATGAGAATCCCAAGATGGCCATATTTCTGCAGCATGCCGCAGGACTTTAC  
ATGCAATGTGTACTGTGCTTTGCTGTCAGTGAAGGTCATACAGCATATTTGACAATAATCGCCAGGA  
TCCCACAGGGCTGACAGCTGCTTTCAGGCAACCGACCTGGCTGGAGTTCTTCATATGCTCTACTGTGTC  
CTTTCCATGGCACCATCTTGGACCCAGCACTGCCAGTCCCAAGGAGAATTACTCTCAAAATACCATCC  
AAGTGGCCATTCAGAGTTTACGTTTCTTCAACAGCTTTGCAGCTTTCATCTGCCTGCTTTTCAGTCTAT  
TGTAGGGGCGAGGGCTTGTCCCTTGCAATTCGGGCACATGGCCAGCTCCCTGCTGGGCCACTGCAGCCAA  
GTCTCCTGTGAAAGCCTCCTTATGAGGTCATCGTCTGTGTGGGCTACTTCACTGTCAACCACCCAGATA  
ACCAGGTGATCGTGCAGTCCGGCCGCCACCCACAGTGTGCAGAAGCTCTGCCAGTTGCCCTTCCAGTA  
TTTCAGTGACCCACGGCTGATCAAAGTACTGTTCCCTTCACTTATCGTGCTTGTACAACAACCATCAG  
ACAAGATCATTCTGGAGCAAGAGATGAGCTGTGTTTTACTGGCCACTTTCATTCAAGGATTTGGCACAGA  
CTCCAGGTCAAGCGGAAAACAGCCTTACCAACCCAAAGGAAATGCCTTGGTTCCCAAGACTATCTTGA  
GCTGGCTAACAGATTTCTCAGCAGGCCGGAAGAAGCTCGACAGTTTTTCTTAAAAAAGAGAAAAA

ACGCGTACGCGGCCGCTCGAGCAGAACTCATCTCAGAAGAGGATCTGGCAGCAATGATATCCTGGATT  
ACAAGGATGACGACGATAAGGTTTAA

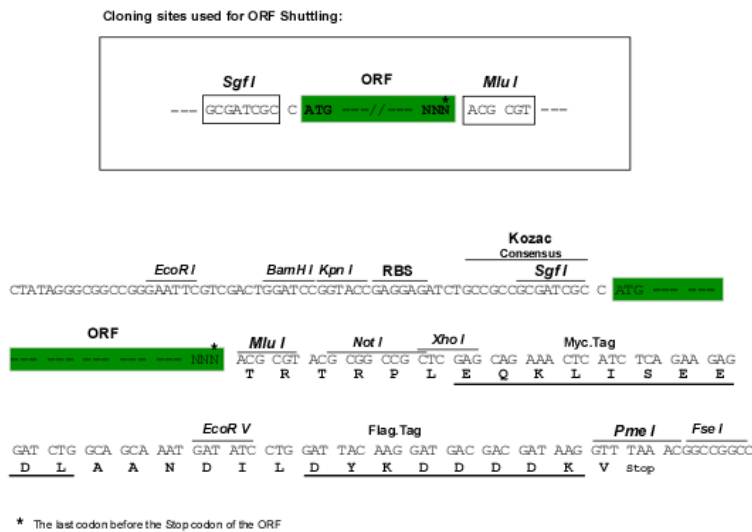
Protein Sequence: >RC229439 representing NM\_020843  
 Red=Cloning site Green=Tags(s)

MMA SFQRNSHDKVRRIVAE EGR TARNLI A WSVPLESKDDDGKPKCQTGGKSKRTIQGTHKTTKQSTAVD  
 CKITSS TTGDKHFDKSPKTRHPRKIDLRARYWAF LFDNLRRAVDEIYVTCESDQSVVECKEVLMLMDNY  
 VRDFKALIDW IQLEKLEKTD AQS RPTSLAWEVKKMSPGRHVIPSPSTRINVTSNARRSLNFGGSGTGTV  
 PAPRLAPTGVSWADKVKAHHTGSTASSEITPAQSCPPMTVQKASRKNERKDAEGWETVQRGRPIRSRSTA  
 VMPKVSLATEATRSKDDSDKENVCLLPDESIQKGQFVGDGTSNTIESHPKDSLHSCDHPLAEKTQFTVST  
 LDDVKN S G SIRDNYVRTSEISAVHIDTECVSVM LQA GTPPLQVNEEKFPAEKARIENEMDPSDISNSMAE  
 VLAKKEELADRLEKANE EAIASAI AEEEQ L TREIEA EENNDINIETDNDSDFSASMGSGSVSFCGMSMDW  
 NDVLADYEARESWRQNTSWGDIVEE EPARPPGHGIHMHEKLS SPSRKRTIAESKKKHEEKQMKAAQLREK  
 LREKTLK LQKLLEREKDV RKWKEELLDQRRRMEEKLLHAEFKREVQLQAI VKKAQEEEEAKVNEIAFIN  
 TLEAQNKRHDVLSKLKEYEQRNLQEERQRRQEEKQARDEAVQERKRALEAERQARVEELLMKRKEQEA  
 RIEQQRQEK EKAREDAARERARDREERL AAL TAAQQEAMEELQKKIQLKHDESIRRHMEQIEQRKEKAAE  
 LSSGRHANTDYAPK LTPYERKKQC SL CNVLI SSEVYLF SHVYGRKHQQAVRENTSIQGRELSDEEVEHLS  
 LKKYIIDIVVESTAPAEALKDGEERQKNKKKAKKIKARMNFRAKEYESL METKNSGSDSPYKAKLQRLAK  
 DLLKQVQVQDSG SWANNKVSALDRTLGEITRI LEKENVADQIAFQAAGGLTALEHILQAVVPATNVNTVL  
 RIPPKSLCNA INVYNLTCNCS ENCS DVLFSNKITFLMDLLIHQLTVYVPDENNTILGRNTNKQVFEGLT  
 TGLLKVS AVVLGCLIANRPDGNCPATPKIPTQEMKNKPSQGD PFNNRVQDLISYVVNMGLIDKLCACFL  
 SVQGPVDENPKMAIFLQHAAGLLHAMCTLCFAVTGRS YSIFDNNRQDPTGLTAALQATDLAGVLHMLYCV  
 LFHGTILD PSTASP KENY TQNTIQVAIQSLRFFNSFAALHLP AFQSI VGAEGLSLAFRHMASLLGHCSQ  
 VSCESSLHEVIVCVGYFTVNHDPNQVIVQSGRHPTVLQKLQCLPFQYFSDPRLIKVLFPSLIAACYNNHQ  
 NKIILEQEMSCVLLATFIQDLAQTPGQAENQPYQPKGKCLGSQDYLELANRFPQQAWEARQFFLKKEKK  
  
 TRTRPLEQKLISEEDLAANDILDYKDDDDKV

Chromatograms: [https://cdn.origene.com/chromatograms/mk8035\\_e02.zip](https://cdn.origene.com/chromatograms/mk8035_e02.zip)

Restriction Sites: SgfI-MluI

Cloning Scheme:

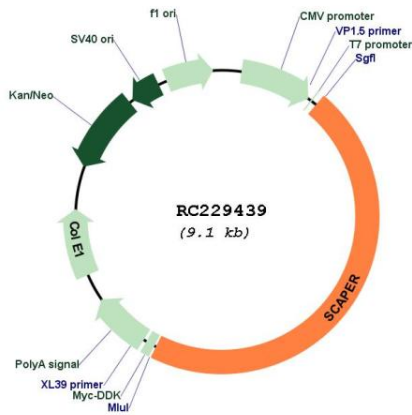


ACCN: NM\_020843

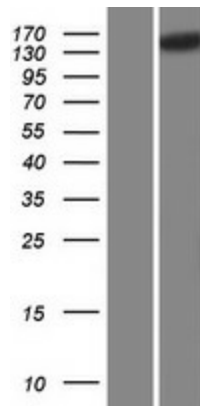
ORF Size: 4200 bp

<b>OTI Disclaimer:</b>	<p>Due to the inherent nature of this plasmid, standard methods to replicate additional amounts of DNA in E. coli are highly likely to result in mutations and/or rearrangements. Therefore, OriGene does not guarantee the capability to replicate this plasmid DNA. Additional amounts of DNA can be purchased from OriGene with batch-specific, full-sequence verification at a reduced cost. Please contact our customer care team at <a href="mailto:custsupport@origene.com">custsupport@origene.com</a> or by calling 301.340.3188 option 3 for pricing and delivery.</p> <p>The molecular sequence of this clone aligns with the gene accession number as a point of reference only. However, individual transcript sequences of the same gene can differ through naturally occurring variations (e.g. polymorphisms), each with its own valid existence. This clone is substantially in agreement with the reference, but a complete review of all prevailing variants is recommended prior to use. <a href="#">More info</a></p>
<b>OTI Annotation:</b>	This clone was engineered to express the complete ORF with an expression tag. Expression varies depending on the nature of the gene.
<b>Components:</b>	The ORF clone is ion-exchange column purified and shipped in a 2D barcoded Matrix tube containing 10ug of transfection-ready, dried plasmid DNA (reconstitute with 100 ul of water).
<b>Reconstitution Method:</b>	<ol style="list-style-type: none"> <li>1. Centrifuge at 5,000xg for 5min.</li> <li>2. Carefully open the tube and add 100ul of sterile water to dissolve the DNA.</li> <li>3. Close the tube and incubate for 10 minutes at room temperature.</li> <li>4. Briefly vortex the tube and then do a quick spin (less than 5000xg) to concentrate the liquid at the bottom.</li> <li>5. Store the suspended plasmid at -20°C. The DNA is stable for at least one year from date of shipping when stored at -20°C.</li> </ol>
<b>RefSeq:</b>	<a href="#">NM_020843.4</a>
<b>RefSeq ORF:</b>	4203 bp
<b>Locus ID:</b>	49855
<b>UniProt ID:</b>	<a href="#">Q9BY12</a>
<b>Cytogenetics:</b>	15q24.3
<b>Domains:</b>	ZnF_U1
<b>MW:</b>	158.1 kDa
<b>Gene Summary:</b>	CCNA2/CDK2 regulatory protein that transiently maintains CCNA2 in the cytoplasm. [UniProtKB/Swiss-Prot Function]

Product images:



Circular map for RC229439



Western blot validation of overexpression lysate (Cat# [LY432447]) using anti-DDK antibody (Cat# [TA50011-100]). Left: Cell lysates from untransfected HEK293T cells; Right: Cell lysates from HEK293T cells transfected with RC229439 using transfection reagent MegaTran 2.0 (Cat# [TT210002]).