

Product datasheet for **RC229419**

NHSL2 (NM_001013627) Human Tagged ORF Clone

Product data:

| | |
|---------------------------|--|
| Product Type: | Expression Plasmids |
| Product Name: | NHSL2 (NM_001013627) Human Tagged ORF Clone |
| Tag: | Myc-DDK |
| Symbol: | NHSL2 |
| Mammalian Cell Selection: | Neomycin |
| Vector: | pCMV6-Entry (PS100001) |
| E. coli Selection: | Kanamycin (25 ug/mL) |
| ORF Nucleotide Sequence: | >RC229419 representing NM_001013627 Red=Cloning site Blue=ORF Green=Tags(s) |

TTTTGTAATACGACTCACTATAGGGCGGCCGGGAATTCGTCGACTGGATCCGGTACCGAGGAGATCTGCC
GCC**CGATCGCC**

ATGCCGTTCTACAGGCGCACGGTGGTACCCAGCGCCTGTGCCCGCGCAACCCGCCGAGCAGCTGGCGG
AGCTCCGCGACGTGAGCCACCTGGCAGCGCTCAGCCTGCTCCGGCAGCTCGCCGACCTCTGTGGCCACTC
GTTGGCTCTGCTCGAGGACCTCGAGGGGACCTGCTGGCCCTGGGGCGCCGCACAGACAGCCTGTACCGG
CGCACCCGTGCCCTCCGCCGCCCTTCCCTGCCGCTGCTTGGCCGGAGGAGGACGAGGAAGAGCTAG
CTGCAGCTAACTCGGGTCGGGAAAATGCGACAGCGACTGCCACTCGAGGTCGTCATGGCGACAGCCAGT
GAACGTGTTCTCTCCTCGGGCAGGCCCCCGAGTGTAGAGGAGCTGCTTGGGAGGGCGCAGCTCAATCTC
CAGAGCCTGTTGCAAGAAGAATATGAGGAACAGTACTCGAGGCCAGACTTGTGGGGCAGACCTCCGCT
CTTCTGATGAGGCCACTAAGCCCACCCCAACCAAGGCCCCAGTCTGCCAGGCGTCTGGAGTTTATATT
GATGCCTACAAAACGGCAGCTGAGCGAGGATGAGACTACCACCCAGGGTGTGAGGGCCCCGAGGCCCTCC
CTGAGCCTGTCTACCACAGCCGACAAGCAAAGTGCCTGGAATAGCCTTTTCCCTTGCCCATCTAGAGG
AGAAGCGGTGGCCTCAGCTTTGTCCACGCAGTCTGACATTGTGCCATCAACATCTCTGGGCAGCAGTT
TGATAAATGCAAGTTTGGCAGACTCGTTGTTTAAACACAGAGACAGCCGTGAACCCCAAGTCCACCCTG
AGGCGGAGGCGGACCATTATTGGATTCTCTAATTTTCCAGCGAGACCAAGGTACAGCAACAGCCAG
CAGGCAGTGTGGCCACTCTACCACCTCCGACATCAGGCCAGTCACTCAGTTCCAGAAGGGTTTATGG
AAGAGTTGCAGTTGGTCAGGATGCTCGGTTCCCAAGTCTCACCTCGCCAGTACTGAGAACTCCTCCAGT
GAGCCGGACGAACCTCACCAGGCACGGAGTGGCCAAACCTCCTGGCATGGAGAGCATGGGAATGGTGT
ACAGTGTCCCCAGTTCTTGCAATGGACCTACAGAATCAACCTTCTCCACTTCTGGAAAGGGAGATGCTTT
TACCTACATGACTCCAAGTGCCACCAGCCAGAGCAATCAAGTCAATGAAAATGGGAAAAATCCTTCTGT
GGGAATCTTGGGTCTCTCTAAACAAAGTCCCACCTCTGGTTCCTAAGGAGGCTGCTACCCTCCTGTGC
CTCGTGATAAACCAGCAGGATGCAGTGGGTGAGTGGCTACCTGAGCGCCTTATTAGCAAAAGGCACAT
GCCCGAAAGACCTCCAAGATTGGCTTCTGACCAGTGGGACCTCGAGGCTGGAGACAGGCCCCCGTGGG
GCCAGCAGATTCCGGGAGCGGTCACTGTCTGTGCCACAGACTCAGGCACACAGATGTGGACTATGATG
AGGAGCAGAAGCCAATGAGGCCTGTGCCCTGCCTTTTGCCAGTACGAGCTCTGAGGGCAGTAACAGTGC



[View online »](#)

TGACAACATTGCCTCCCTTAGTGCCAGCAAGAGGCCAGCACAGAAGGCAGAGGTCCAAGAGTATCTCA
CTTAGGAAGGCCAAAAAGAAGCCTTCCCCACCCACACGCAGTGTCTCACTGGTCAAAGATGAGCCAGGCC
TCTTGCCCTGAAGGTGGGTGAGCACTACCCAAGGACCAGAGGCCAAAGAGCCTTTGCCTCTCCTTGGAACA
TCAAGGACATCACTCGTCCCACCCAGATGCTCAGGGTCACCCAGCTATTCCAAACCACAAAGATCCAGAA
AGTACACAATTCTCCACCACTGGTATCTTACTGACTGGAAGTCTGGTGACACCTACCAATCCCTGTCCA
GCTCCAGCACTGCCACTGGCACCACAGTCATTGAGTGCACCCAAGTTCAGGGCAGCTCAGAGTCTCTTGC
CTCACCTTCCACCTCCAGAGCCACTACACCTTCCCAACTCTCCATTGAAGTGGAGGCCAGGGAGATATCA
TCCCCGGGAAGGCCCTGGACTGATGTACCCTCCAGTGGCTACTCCAGCCAGTCGGAAACACCAACAC
CCTACTGTTTCCATGTCCCTGACCCTGGGCCACTTACCCCTCCAAGCAGCAGTGTCCGGGTACGTCCAGT
GGTACCTGAGAGGAAGTCATCACTACCCCGACGTCAACCAATGGAGAAATTTCCCAAGTCACGGCTATCA
TTTGACCTACCACTGACCTCTTACCCAACCTGGATCTGTCTGGGATGAGTATCTCCATCCGAAGCAAAA
CTAAGGTGAGTCGGCACCCTCAGAGACAAATTTGGCGTCAAGCTGGCCAGAAAATAATCCCAACCA
GCCAATCATGCCTATGGTACTCAGTCCGACCTACGTTCTGTTCCGCTGAGGTGCGTCAGCAAGTCTGAG
CCGGAAGATGATATTGAGAGCCCTGAGTATGCCGAGGAACCCAGAGCAGAAGAAGTCTTCCACCTGCCAG
AGAGAAAGACAAAACCTCCCGTAGCTGAGAAGCCTCCGTTGGCCCGAGGCTCCAAGCTTGGTCCACAA
GCCACCATCTGTTCTGAGGAGTATGACTAATTCACCAACCTTGGCTATGCCCCCCAGGAGCTCAATT
CAACATGCGAGACCCTCCCTCAAGACAGCTACACGGTAGTGCAGAAACCAAGCCCTCCAGCTTCCAG
ATGGCAGAAGCCAGGGGAGTCAACAGCACCCCTCATCTTGTGTTTACGCTTTTGCCAGTTTCTCTGTA
TGCTTTTCTTCAGGAACACAGCAGCCTCCCCAGGGAAGTGTAGAGGACGAGGGCCCAAGGTGAGGGTT
CTGCCTGAAAGAATTAGCCTCCAGAGCCAGGAAGAAGCTGAGAAAAAGAAAGGCAAGATTCACCTCCCG
TACCAAAAAACCCAGCGTGCTGTACCTGCCTCTCACTTCTCCACAGCTCAATGGAGGCCTATGTGGC
AGAACCAAGGCTGCCTCTCAGCCCCATCATCACCTGGAGGAAGACACCAAGTGTCCCGCCACCGGCGAT
GACCTGCAATCACTTGGTCAAAGGGTGACTTCAACTCTCAGGCTGACAGTGAAGGGAGGCAAGCCCTC
TGGGGAGTTCTGTGGAACCAAGGCACCGAAGAAAAAGTTAATCAGTGATAAAACAGCTGAATGGATTGC
AGAGGATGATGATGACGTGTTTGTGGCTTACGCACAACCTGAAGATTTATTTACTGTGATACACAGGTCC
AAAAGGAAGCTGCTCGGCTGGAAGGAACCTGGTGAAGCCTTTGTGGGTGGCAGAACGAGTCCCACTCAC
CAATAAAGAACACAGCTGAGTCTCCAATCAGTGAGTCTACCGCCACTGCAGGGTCAGGCAGCAGTGCCAA
CCTAGATGCTGGCAGAAATGACGATTTCAAGGCCTTGCTACAGAAGAAGGGAAGTAAAGGCAACTCCAAG
TCTCGTCCCTCAGCAGCTGAACCTTCTGAAGACCACTAACCCTACTGGCTCGGAGAATTATTGCACAATTT
CAAAAGACTATGAAACCACCGATAACCCAGTACC

ACGCGTACGCGCGCGCTCGAGCAGAAACTCATCTCAGAAGAGGATCTGGCAGCAAATGATATCCTGGATT
ACAAGGATGACGACGATAAGGTTTAA

Protein Sequence: >RC229419 representing NM_001013627
 Red=Cloning site Green=Tags(s)

```

MPFYRRTVVPQRLCPRNPPQQLAELRDVSHLAALSLRQLADLCGHSLALLEDEGHLLALGRRTDSL YR
RTVRLRRRLPCRLLGPEEDEEELAAANSGRENATAAHSRSSWRQPVNVFLSSGRPPSVEELLREAQLNL
QSLLEEEYEEQYSEARLVGQTFRRSDEATKPTPNPRPQSARRLEFILMPTKRQLSEDETTTQGVRAPEAS
LSLSTTADKQTAWNSLFPLPILEEKRPQLCSTQSDIVPINISGQQFDKHASLRHSLFNTETAVNPKSTL
RRRRRTIIGFSNFQORDQGHNSPAGSVAHSTTSDIRPSHSVPEGVHGRVAVGQDARFPSLTSPVLRTPSS
EPDEPHQARSQPNPPGMESMGMYVSVSSCNGPTESTFSTSWKGDFTYMTPSATSQSNQVNEGNKPNPC
GNSWVSLNKVPLVPKEAATLLVARDNPAGCSGSAGYPERLIQQRHMPERPSKIGLLTSGTSRLETGPGG
ASRFRERSLSVPTDSDGTTDQVDEEQKANEACALPFASTSSEGSNSADNIASLSAQEAQHRRQRKSKIS
LRKAKKKPSPPTRSVSLVKDEPGLLPEGGSALPKDQRPKSLCLSLHQGHSSHPDAQGHPAIPNHKDPE
STQFHHWYLDWKSQDQYQSLSSSSTATGTTVIECTQVQGSSESLASPSTRATTPSQLSIEVEAREIS
SPGRPPGLMSPSSGYSSQSETPTPTVSMSTLGLHLPSSSVRVRPVPERKSSLPPTSPMEKFPKSRSL
FDLPLTSSPNLDLGMISIRSKTKVSRHHSETNFGVKLAQKTNPQPIMPVMTQSDLRVRLRSVSKSE
PEDDIESPEYAEEPRAEEVFTLPERKTKPPVAEKPPVARRPPSLVHKPPSVEEYALTSPTLAMPRSSI
QHARLPQDSYTVVRKPKPSSFPDGRSPGESTAPSSLVFTPFASSSDAFFSGTQQPPQGSVEDEGPKVRV
LPERISLQSQEEAEKKKGKIPPPVPKPSVLYLPLTSPTAQMEAYVAEPLPLSPIITLEEDTKCPATGD
DLQSLGQRTSTPQADSEREASPLGSSVEPGTEEKSLISDKTAEWIAEDDDVDFVASRTTEDLFTVIHRS
KRKLLGWKEPGEAFVGGRTSSHSPKNTAESPISESTATAGSGSSANLDAGRNDDFKALLQKKGSKATPR
SRPSAAELLKTTNPLARRIIAQFSKDYETDNPST
  
```

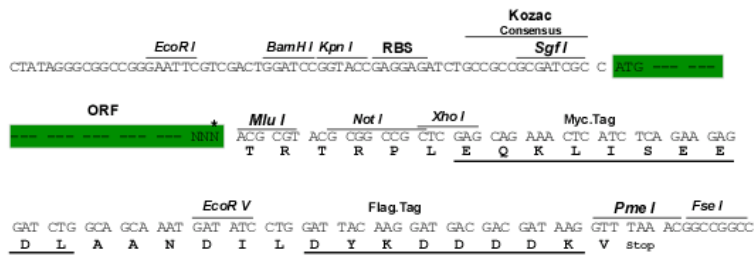
TRTRPLEQKLISEEDLAANDILDYKDDDDKV

Chromatograms: https://cdn.origene.com/chromatograms/mk8035_e10.zip

Restriction Sites: Sgfl-MluI

Cloning Scheme:

Cloning sites used for ORF Shuttling:



* The last codon before the Stop codon of the ORF

ACCN: NM_001013627

ORF Size: 3675 bp

OTI Disclaimer: The molecular sequence of this clone aligns with the gene accession number as a point of reference only. However, individual transcript sequences of the same gene can differ through naturally occurring variations (e.g. polymorphisms), each with its own valid existence. This clone is substantially in agreement with the reference, but a complete review of all prevailing variants is recommended prior to use. [More info](#)

OTI Annotation: This clone was engineered to express the complete ORF with an expression tag. Expression varies depending on the nature of the gene.

Components: The ORF clone is ion-exchange column purified and shipped in a 2D barcoded Matrix tube containing 10ug of transfection-ready, dried plasmid DNA (reconstitute with 100 ul of water).

Reconstitution Method:

1. Centrifuge at 5,000xg for 5min.
2. Carefully open the tube and add 100ul of sterile water to dissolve the DNA.
3. Close the tube and incubate for 10 minutes at room temperature.
4. Briefly vortex the tube and then do a quick spin (less than 5000xg) to concentrate the liquid at the bottom.
5. Store the suspended plasmid at -20°C. The DNA is stable for at least one year from date of shipping when stored at -20°C.

RefSeq: [NM_001013627.2](#), [NP_001013649.2](#)

RefSeq ORF: 3678 bp

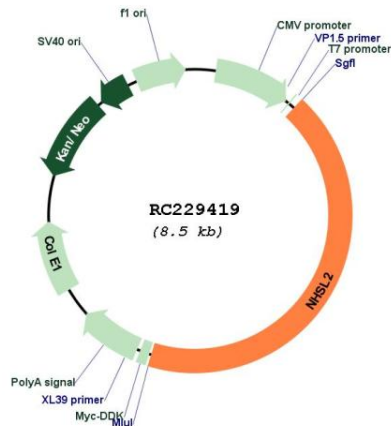
Locus ID: 340527

UniProt ID: [Q5HYW2](#)

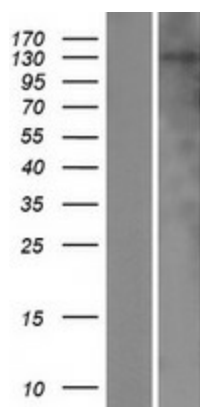
Cytogenetics: Xq13.1

MW: 133.1 kDa

Product images:



Circular map for RC229419



Western blot validation of overexpression lysate (Cat# [LY432427]) using anti-DDK antibody (Cat# [TA50011-100]). Left: Cell lysates from untransfected HEK293T cells; Right: Cell lysates from HEK293T cells transfected with RC229419 using transfection reagent MegaTran 2.0 (Cat# [TT210002]).