

## Product datasheet for RC229416

### VWA3A (NM\_173615) Human Tagged ORF Clone

#### Product data:

Product Type:	Expression Plasmids
Product Name:	VWA3A (NM_173615) Human Tagged ORF Clone
Tag:	Myc-DDK
Symbol:	VWA3A
Mammalian Cell Selection:	Neomycin
Vector:	pCMV6-Entry (PS100001)
E. coli Selection:	Kanamycin (25 ug/mL)
ORF Nucleotide Sequence:	>RC229416 representing NM_173615 Red=Cloning site Blue=ORF Green=Tags(s)

TTTTGTAATACGACTCACTATAGGGCGGCCGGAATTCGTCGACTGGATCCGGTACCGAGGAGATCTGCC  
GCCCGATCGCC

ATGAAGAAATACAGGAAAATAAGCATTGGGTGTTTTGCAATGGCTACACAACTAGTCATGTCTCCATG  
GTCAAGAAAATATGTTTCTGGAAAACCATTGCATTAGGAGAAACACTGGCAGAGATTCAAAGAAGCCACT  
AAAGCAGAAGAATATGAATGGACTTGGGCAAAATTCGGACAATGGATTATTGGTTACACATGTTAACCAG  
ACACAGGACTTACTGAGGCTGCAGGGGAGTGAGACCCAGTCTTCAGATTGGGAGGACTCTGAAGACTGGC  
TTTCGGCTCACAGTTTAAAATGTCAGAACTCACCTTGGCTGACCTGATAAGCCAGGCACAGAAGTGCT  
GGAGGAGGGCACCAATGTCGTGCAGAAAATATGTTTCTCCACCCAGATCATCCGCCATTTTGAGTCAAAG  
CTTTCTGACACTATTGAAGTCTATCAAGAGAGAATTCAGTGGCTCACAGAAAACGCAAGAAGGCATTTG  
GCCTCATCAAAGGGGCCAGAGTCAGCATCCTCATAGATGTGTAGCCATCAGCAGTGGCCCTCAGAAAAG  
AGAGTTCCAAAAGGACCTCATGAGCCTCATCGATGAGCAGCTGAGCCACAAGGAGAAGCTGTTTGCCTG  
TCCTTTGGCACCAATGCCGGTCCCTCTGGCCAGACCCCATGGAAGTCAGCGCCTCCACCCTCCAGGAAC  
TTAAGCTCTGGGTAAGACGCTGCAGCCTGATGGAGGCAGCAACCTGCTACAAGCTCTGAAGAAGATCTT  
CACTCTCAAGGGACTGGATTCCTGGTGGCCATCATGAGAAGCTGCCAGATCAGCCTTCTGAAATCCTG  
TCTGACTACATCCAGCAGTCCACCATGGGAAGAGACCTCATCATCACTTTCATCACTACAGATGCGATG  
ATCAGATGCCCCCTGCTGTCTGAAGAACCTTGCAGAAGCTGTTAGGGGCTACTACCACTGCTACAGCCC  
AAAGATGGAGCACTACACCAGCCGGGACATGGATGAGCTCCTGGCAGAAATTCAGAAGGCCAGAGCCTC  
CTCAGCCACGTGCAAGCCCTGCAGCACAGCAGCCCTGTGAGGCGCTCACCTGCACCATGGAGGAGATTT  
CCACAGAGATTACAAATGGGCCACTCATAAGCCTCTTGCCTAAACCCCAAGCATGACGCTCCTCTCAC  
CATTGAGTTTCCAACTTGGACAAGACTTCTGCAGAGTGGCTTAAGGTCAATGGTCTGAAAGCCAAGAAA  
TTAAGTCTATATCAGGTCTGGCACCAATGCATTCTCTCCTGTGGAGGAATTTGTACCTATTCTCCAGA  
AAACAGTATCATCGACCATCCATGAGAAGGCAATGATAACAATTTGAATGGCACGACGGGACAGTGAAGAA  
CATTTCATGTGGACCCACCCTTCCCTATAAGTACCAGCAACAGCTCAGCAGAGCTATGCGGATGTATGAG  
AGGCGGATTGAGTGGCTCTCCCTGGCCAGCAAGAATCTGGGGCACAGTCTGTGAAAAAAGGGTGGTTG  
TACTGCTCGATATCTCTGCGACCAATTCATGTACATTATTCATATCCAGCACTCCCTGCGGCTGCTGCT



[View online »](#)

GGAGGAGCAGTTATCCAACAAGGACTGTTTCAACCTCATCGCGTTTGAAGCACAATTGAAAGCTGGAGG  
CCTGAGATGGTTCCCGTGAGTCACAACAATTTACAAAAGTGCCTGGCGGTGGGCCCTGAACCTGCGGTGTC  
GGGGCAGCAGGAACGTTCTCAGCGCCCTGCGGAAGGCTGTGGAAGTAGACTTCAAGGACAAAGACAAACA  
CCAATCGCAGGGAATCTACCTCTTCACTGGGGGCATCCCCGACCAGGACATGCCTACACTCAGTGCCTAC  
ATGGCTGAGGCCCTGTGGCGGCTGCGACCTCCAGCTGAACGTGTGTCTTCTACGTGGCGAGCCAAAGA  
TGGACACCACACCCCTGCCCGCTATGCCAGTCACTGACACAGCCGCCCTACAAGGAGGTCACCCG  
GGCTGCAGGTGGCCGCTTCCACTGGTTTGGAGACACAGGCATTTATGAGAGCGATGACATCAACTCCATC  
ATGTCTGAGATGGAAAAGGCTCTCAACTACTCCAAAAGTGTGCCTTCTCATGGCCTCCCTGAAGAACC  
ATTCAGGAAAAGTACTGGGAAGTTCAGCCCTCCGAAAAGAAAACCAAAGACACTTCAGCTAAGAAGTCA  
GCCAAGAAGCTCTGCCCTCCAGGCCACCGTCCCTGGGGCCAGAATGAGCATTAAAGATGACCTT  
GACAGAGAGAAGACCCCGCTGAAATCTCTGAAATGGCGTCCACTCAGTAGCAGAGTTGGCATCTCAC  
CAGCTGCGGCCAGCCAACGAAAGAAGGGATGATGAACTGAGGAGGAAGACCAAGTCAAGGGAAGCAGA  
GACATCTTTTTACTGTTCTACACAGAGAAAGGAATGACGTGGGCTCAGTGTACAAGAAGTACCCTCAA  
GGAAGGGGCTTGAGAAGGACTAGCTCTTCTATTGACTTACCAGAAAGGATACAGTTTGCTCAAGCCAAG  
AGTGGGTGGCAAATATGGGCTCAAAAATTGAAGCTGGAGATTTCCAGATGCATGGGTCCAACCTGCAC  
TCATCAAAAGTCAGGACAGAGGTCAGCATCCGCCAAACACTGCAGCATTTCCCCAGCGTTGAGATCCAT  
GGAGTGGTGAGACACATCCAGTGGACGCCAGGGAGATGGAGGTGTACATCAGGCACTTGGAGAAGGTGT  
TAAGGCGCTATGTCCAGAGGCTGCAAGTGGCTGTCTCCGGGAGCCGCCACTGTTTGGCACCGTTTTGGA  
GAGCAAAGTATGCATATTGCTGGACACGTGAGGTCCATGGGCCCTACCTGCAGCAGGTGAAGACAGAG  
CTGTTTTGCTGATTTGGGAACAGCTGCGGAAGTGTGTGACAGTTTTAACCTGCTCAGCTTTCAGAGA  
GCTTTCAGTCATGGCAGGACACGCTGGTGGAGACCACAGATGCAGCGTGTATGAGGCTATGCAATGGGT  
GACCCACCTGCAAGCTCAGGGCAGCACCTCCATCTTGAAGCATTGCTGAAAGCTTTCAGTTTCCATGAT  
CTGGAAGGATTGTACCTCCTGACCGACGGAAGCCAGACACAAGCTGCAGCCTTGTCTAAATGAAGTCC  
AAAAACTCAGGGAGAAAAGAGATGTGAAAGTGCACACCATTTCTTGAAGTGTGACAGACAGCGCGGT  
TGAGTTCTGAGAAAGCTGGCTTCTTACCAGGACGCTATCACTGCCCTGTGGGTGAGGACACACTC  
TCCAAAATTCACAGCCTGCTGACCAAAGGCTTCAATGAAAAGGATCCCACATTGCCACCATTGAAAG  
GAGATGATTTAAGGATCCTGGCCAGGAGATCACCAAGGCCAGAAGCTTCTCTGGCAGGCCCAATCCTT  
CAGATCCAACCTCAGAAGAAAATGATGCAGAACCAAAGTCACTCTTCC

ACGCGTACGCGGCCGCTCGAGCAGAACTCATCTCAGAAGAGGATCTGGCAGCAAATGATATCCTGGATT  
ACAAGGATGACGACGATAAGGTTTAA

**Protein Sequence:** >RC229416 representing NM\_173615  
 Red=Cloning site Green=Tags(s)

MKKYRKISIGCFAMATQTSHFVHGQENMFLENHCIRRNTGRDSKKPLKQKNMNGLGQNSDNGLLVTHVNQ  
 TQDLLRLQGSETQSSDWEDSEDWLSAHLKCKQLTLADLISQGTVELEEGTNVQKICFSTQIIRHFESK  
 LSDTIEVYQERIQWL TENSKKAFLIKGARVSILIDVSAISSGPQKEEFQKDLMSLIDEQLSHKEKLFVL  
 SFGTNAGSLWPDPMEVASATLQELKLWVKTLQPDGGSNLLQALKKIFTLKGLDSLVAIMRSCPDQPSEIL  
 SDYIQQSTMGRDLIIHFITYRCDDQMPPAVLKNLAEAVRGYYHCYSPKMEHYTSRDMDELLAEIQKAQSL  
 LSHVQALQHSSPCEALTCTMEEISTEITNGPLISLLPKPPKHDAPLTIEFPNLDKTSAEWLKVNGLKAKK  
 LSLYQVLAPNAFSPVEEFVPILQKTVSSSTIHEKAMIQFEWHDGTVKNIHVDPFLYKYQQQLSRAMRYE  
 RRIEWLSASRRIWGTVCEKRVVLLDISATNSMYIIHQHSLRLLLEEQLSNKDCFNLIAFGSTIESWR  
 PEMVPSVHNNLQSAWRWALNLCRGRSNVLSALRKAVEVDFKDKDKHQSGGIYLF TGGIPDQDMPTLSAY  
 MAEACGGCDLQNLVCLFYVGEPKMDTPPARYASHTDAAAYKEVTRAAGGRFHWFGDTGIYESDDINSI  
 MSEM EKALNYSQKCAFLMASLKNHSGKVLGSSALPKEKPKTLQLRSQPKLCP RPRTVPLGARMSIKDDP  
 DREKSPPLKSLKWRPLSSRVGISPAQAQPTKEGMMELRRKTKSREAETLLLLFYTEKGNDVGSVYKYPQ  
 GRGLRRTSSSIDLPRKDTVCSSEWVAKYGLKKLKEISRCMGNCTHQKSGQRSASAKHCSI FSPSVEIH  
 GVVRIHQWTPREMEVYIRHLEKVLRRYVQRLQWLLSGSRRLFGTVLESKVCILLDTSGSMGPYLLQVQKTE  
 LVLLIWEQLRKCCDSFNLLSFAESFQSWQDTLVETTDAACHEAMQWVTHLQAQGSTSILQALLKAFSFDH  
 LEGLYLLTDGKPDTSCLVLNEVQKLREKRDVKVHTISLNCSDRAAVEFLRKLASF TGGRYHCPVGEDTL  
 SKIHSLLTGKFINEKDPTLPPFEGDDLILAQEITKARSFLWQAQSFRSQLQKKND AEPKVTL S

TRTRPLEQKLI SEEDLAANDILDYKDDDDKV

**Chromatograms:** [https://cdn.origene.com/chromatograms/mk8035\\_e11.zip](https://cdn.origene.com/chromatograms/mk8035_e11.zip)

**Restriction Sites:** SgfI-MluI

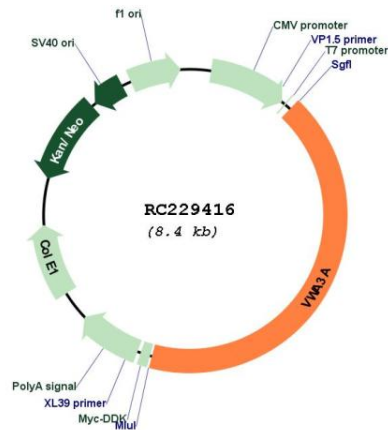
**Cloning Scheme:**



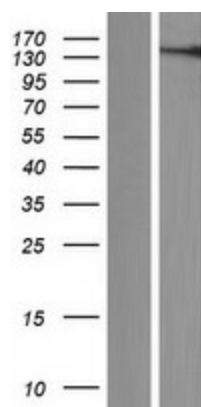
**ACCN:** NM\_173615

**ORF Size:** 3552 bp

<b>OTI Disclaimer:</b>	The molecular sequence of this clone aligns with the gene accession number as a point of reference only. However, individual transcript sequences of the same gene can differ through naturally occurring variations (e.g. polymorphisms), each with its own valid existence. This clone is substantially in agreement with the reference, but a complete review of all prevailing variants is recommended prior to use. <a href="#">More info</a>
<b>OTI Annotation:</b>	This clone was engineered to express the complete ORF with an expression tag. Expression varies depending on the nature of the gene.
<b>Components:</b>	The ORF clone is ion-exchange column purified and shipped in a 2D barcoded Matrix tube containing 10ug of transfection-ready, dried plasmid DNA (reconstitute with 100 ul of water).
<b>Reconstitution Method:</b>	<ol style="list-style-type: none"> <li>1. Centrifuge at 5,000xg for 5min.</li> <li>2. Carefully open the tube and add 100ul of sterile water to dissolve the DNA.</li> <li>3. Close the tube and incubate for 10 minutes at room temperature.</li> <li>4. Briefly vortex the tube and then do a quick spin (less than 5000xg) to concentrate the liquid at the bottom.</li> <li>5. Store the suspended plasmid at -20°C. The DNA is stable for at least one year from date of shipping when stored at -20°C.</li> </ol>
<b>RefSeq:</b>	<u>NM_173615.5</u>
<b>RefSeq ORF:</b>	3555 bp
<b>Locus ID:</b>	146177
<b>UniProt ID:</b>	<u>A6NCI4</u>
<b>Cytogenetics:</b>	16p12.2
<b>MW:</b>	133.8 kDa

**Product images:**


Circular map for RC229416



Western blot validation of overexpression lysate (Cat# [LY432425]) using anti-DDK antibody (Cat# [TA50011-100]). Left: Cell lysates from untransfected HEK293T cells; Right: Cell lysates from HEK293T cells transfected with RC229416 using transfection reagent MegaTran 2.0 (Cat# [TT210002]).