

Product datasheet for RC229412

SORCS2 (NM_020777) Human Tagged ORF Clone

Product data:

Product Type:	Expression Plasmids
Product Name:	SORCS2 (NM_020777) Human Tagged ORF Clone
Tag:	Myc-DDK
Symbol:	SORCS2
Mammalian Cell Selection:	Neomycin
Vector:	pCMV6-Entry (PS100001)
E. coli Selection:	Kanamycin (25 ug/mL)
ORF Nucleotide Sequence:	>RC229412 representing NM_020777 Red=Cloning site Blue=ORF Green=Tags(s)

TTTTGTAATACGACTCACTATAGGGCGGCCGGGAATTCGTCGACTGGATCCGGTACCGAGGAGATCTGCC
GCCCGATCGCC

ATGGCGCACCGGGGGCCCTCGCGCGCCTCGAAGGGCCCCGGCCCCACCGCCCGAGCCCCGAGCCCCGGGG
CTCCGCCCGCCGCGCTCGCGCGCTCGCGGCCGCTCCTGTGTGTGTGTGTGTGGGCGCCTGCGG
GGCGGGGGGGCGCTCCCTGAGCCCGGGCGCCTGGGTCTCACGCCAACTGACCCGGGTGCCGCGGAGC
CCTCCCGGGGGCGCGCGGAGCCCGGTGGCGGGAGGACCGCGAGGCGCGCGGCACGGAGCCAGGCGCCC
CGGGTCCGAGTCCCGTCCCGTCTGGTCCCGGGAGGACCGGCCCGCCCGCGGGTACCGGCGCTG
GGAGCGGGCGCGCCGCTGGCCGGAGTGGCTTCGCGGGCGCAGGTCTCGTTCATCAGCACGTCTGTCGTG
CTCAAGGGGGACGCGACGACAACCAGGCGATGGTGCACCTGGACGGGCGAGAACAGCAGCGTGATCTTGA
TCCTGACGAAGTACTACCACGCAGACATGGGGAAGTTCTGAAAAGTTCTGTGGCGGTATCAGATTT
CGGGACGTCTACACCAAGCTCACCTCCAGCCTGGTGTACCACCGTATCGACAATTTCTACATCTGC
CCGACCAACAAGAGGAAGTCTCCTTGTGAGCTCCTCACTCAGTGACCGGGACCAGAGCCTATTCTCA
GCGCAGACGAAGGCGCCACCTTTAGAAGCAGCCATTCCCTTCTCGTGGAACTCTGATTTCCACCC
TAAGGAGGAGACAAGGTCTCGCTACACAAAGGAGAGCAAGCTCTACGTGTCTGACTTGGGGAAA
AAGTGGACTTCTGCAAGAGCGAGTGACCAAAGACCAGTGTCTGGTCTGTGTCTGGGTGGACGCTG
ACCTGACTTGGTCCACGTGGAAGCCAAAGACCTCGGTGGAGATTTTCGTACGTACCTGCGCAATCCA
CAATTGCTCCGAGAAGATGCTGACAGCCCCATTGCGAGGCCCCATTGACCACGGGTCTCTGACCGTGCAG
GACGATTACATCTTCTTAAGGCAACATCAGCAAACCAGACAAAATACTACGTCTCTTATCGTCGAAATG
AATTTGTCCTGATGAAGCTGCCGAAGTATGCAATGCAAAAGGATCTGCAGATCATCAGCAGGACGAGAG
TCAGGTGTTCTGGCGGTGCAGGAGTGGTACCAGATGGACACCTACAACCTGTACCAGTCGGACCCACGG
GGCGTGCCTACGCGTGGTGTGCAGGACGTGCGCAGCTCACGGCAGGCGGAGGAGCGTGTCTATCG
ACATCTGGAGGTGAGAGGGGTGAAAGGAGTCTTCCTGGCAAACCAAAAATTGATGGGAAAGTATGAC
GCTTATAACCTACAACAAGGGCCGCGACTGGGATTACCTGAGGCCACCCAGCATGGACATGAATGGAAAA
CCAACCACTGCAAGCCTCCAGACTGCCACCTGCACCTGCACCTGCGCTGGGCGAGACAACCCCTACGTAT
CAGGCACCGTGCACCAAGGACACCGCCCCAGGCCTCATCATGGGTGCAGGTAACCTGGGCTCACAGCT



[View online »](#)

GGTGAATATAAAGAAGAAATGTACATCACGTCAGACTGTGGTCACACCTGGCGGCAGGTGTTTGAGGAA
 GAGCATCACATCTGTACCTGGACCACGGCGCGTGATCGTGGCCATCAAAGACACCTCCATCCCTTTGA
 AGATCCTCAAGTTCAGTGTGGACGAGGGCCTCACCTGGAGCACGCAACTTCACCAGCACCTCGGTGTT
 TGTGGACGGGCTGCTGAGTGAGCCAGGGGACGAGACGCTGGTCATGACGGTCTTTGGCCACATCAGCTTC
 CGCTCCGATTGGGAGCTGGTCAAGGTGGACTCCGGCCCTCATTTCCAGGCAGTGCGGCGAGGAGGACT
 ACAGTCTCTGGGAGCTCCAACCTGCAGGGCGACCGCTGTATCATGGCCAGCAGAGAAGTTTCCGGAA
 AAGAAAGTCCACGTCCTGGTGCATCAAGGGGAGGAGCTTACGTCGGCGCTCACGTCCCGGTGTCCGAG
 TGCCGGGACTCGACTTCTGTGCGACTACGGATTTGAGCGCTCCTCCTCAGAGTCCAGCACCAACA
 AGTGCTCTGCCAACTTCTGGTTTAAACCCATTGTCCCCGCCTGACGACTGTGCCCTGGGCCAGACCTACAC
 CAGCAGCCTTGGGTACCGGAAAGTGGTGTCCAACGTGTGTGAGGGTGGGTGGACATGCAGCAGAGTCAG
 GTGCAGCTGCAGTGCCCCCTCACGCCGCCCGGGGCTGCAGGTGAGCATTCAAGGCGAGGCGGTGGCCG
 TGCGGCCCTGGAGAGGACGTCCTGTTTGGTGCAGGAGCAGGGTGTGTCCTGACTACCAAGTACCA
 GGTAGACCTTGGGACGGCTTCAAGGCCATGTACGTGAACCTTACTGACCGGGGAGCCATCCGGCAC
 CGTACGAGAGCCCCGGCATCTACCGCGTGTCCGTGAGGCGAGAGAACACGGCAGGCCACGATGAGCGCG
 TGCTCTTTGTCCAGGTCAACTCCCCCTGCAGGCCCTTACTGGAGGTGTTTCTGTGATTGGCCCTCAA
 CCAGGAGGTGAACCTCACAGCTGTGCTGCTCCCTTGAACCTAACCTCACCGTCTTCTACTGGTGGATC
 GGCACAGCCTGCAGCCCCCTCTTTCCCTGGATAATTCTGTGACAACCGGTTTTTCGGACACGGGCGACG
 TGCGTGTGACGGTGCAGGCCCTGTGGAACTCGGTGCTGCAGGACTCCAGGGTCTCCGTGTGCTGGA
 TCAATTTCAAGTCATGCCTCTGCAGTTTTCAAGGAGCTGGATGCCTACAACCCCAACCCCTGAGTGG
 AGGGAAGACGTGGGCTGGTGGTCAACCGGCTGCTCTCAAGGAGACCAGCGTCCCTCAGGAGCTTCTGG
 TGACTGTGGTGAAGCCGGGGCTGCCACTTTGGCCGATCTGTACGTGCTCCTGCCCTCCAGGCCAC
 AAGGAAGAGGAGCCTCTCGAGTGATAAGAGGCTCGCCGCATCCAGCAGGTGCTGAACGCACAGAAGATC
 AGCTTCTCTCGGAGGCGGAGTCCGGTCTGGTGGCCCTGCGGGACACAGGCACAGGTGCTGAGCAGC
 TGGGCGGCGGTGGCGGCTACTGGGCGGTAGTGGTGTGTTTGTGCATCGGGCTCTTCGCGAGGAGCCTT
 CATCTCTACAAGTTCAAAGGAAACGGCCAGGACCGTGTACGCCAAATGCACAACGAGAAGGAG
 CAGGAGATGACCAGCCCTGTGAGTCACAGTGAGGACGTCCAGGGCGCTGTCCAGGGCAACCACTCAGGCG
 TGGTCTGAGCATCAACTCCCGAGAGATGCACAGCTACCTGGTGAGC

ACGCGTACGCGGCCGCTCGAGCAGAAACTCATCTCAGAAGAGGATCTGGCAGCAATGATATCCTGGATT
 ACAAGGATGACGACGATAAGGTTTAA

Protein Sequence:

>RC229412 representing NM_020777
 Red=Cloning site Green=Tags(s)

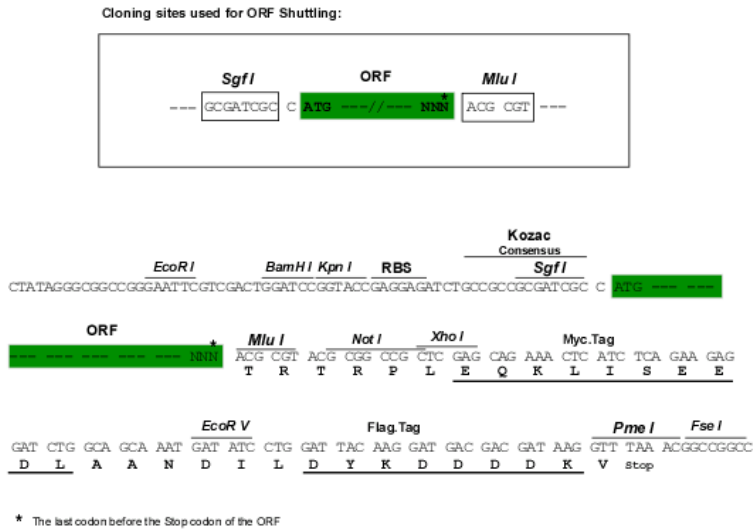
MAHRGPSRASKGPPTARAPSPGAPPPRSPRSRPLLLLLLLGACGAAGRSPEPGRLGPHAQLTRVPRS
 PPAGRAEPGGEDRQARGTEPGAPGSPGPAPGPGEDGAPAAGYRRWERAAPLAGVASRAQVSLISTSFV
 LKGDATHNQAMVHWTGENSSVILILTKYHADMGKVLSSLWRSSDFGTSYTKLTLQPGVTTVIDNFYIC
 PTNKRKVIIVSSSLSDRQSLFLSADEGATFQKQPIPFVETLIFHPKEEDKVLAYTKESKLYVSSDLGK
 KWTLLQERVTKDHFVSWVSGVDADPDLVHVEAQDLGGDFRYVTCAIHNCSEKMLTAPFAGPIDHGSGLTVQ
 DDYIFFKATSANQTKYYVSYRRNEFVLMKLPKYALPKDLQIISTDESQVFAVQEWYQMDTYNLYQSDPR
 GVRVALVLQDVRSSRQAEESVLEIDILEVRGVKGVFLANQKIDGKVMTLITYNKGRDWDYLRRPSSMDMNGK
 PTNCKPPDCHLHLRWADNPVYSGTVHTKDTAPGLIMGAGNLGSQLVEYKEEMYITSDCGHTWRQVFEE
 EHHILYLDHGGVIVAIAKDTSIPLKILKFSVDEGLTWSTHNFTSTSVFVDGLLSEPGDELVMTVFGHISF
 RSDWELVKVDFRPSFSRQCGEEDYSSWELSNLQGDRCIMGQRSFRKRKSTSWICKGRSFTSALTSRVCE
 CRDSDFLCDYGFERSSSSESSTNKCSANFWFNPLSPPDDCALGQTYTSSLGYRKVVSNNVCEGGVDMQQSQ
 VQLQCPLTPRRLQVSIQGEAVAVRPGEDVLFVVRQEQGDVLTTKYQVDLGDGFKAMYVNLTLTGEPVIRH
 RYESPGIYRVSVRAENTAGHDEAVLFVQVNSPLQALYLEVVPVIGLNQEVNLTAVLLPLNPNLTVFYWMI
 GHSLQPLLSDNSVTTRFSDTGDVRVTVAACGNSVLQDSRVLRLVDQFQVMPQLFQSKELDAYNPNTPEW
 REDVGLVVTRLLSKETSVPQELLVTVVKPGLPTLADLYVLLPPRPTRKRSLSSDKRLAAIQVVLNAQKI
 SFLLRGGVRLVALRDTGTGAEQLGGGGYWAVVVLVFIIGLFAAGAFILYKFKRKRPGRTVYAQMHNKEK
 QEMTSPVSHSEVDQGAQGNHSGVVLINSREMHSLVLS

TRTRPLEQKLI SEEDLAANDILDYKDDDDKV

Chromatograms: https://cdn.origene.com/chromatograms/mk8010_d07.zip

Restriction Sites: SgfI-MluI

Cloning Scheme:

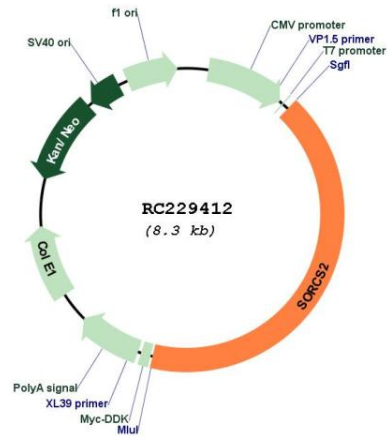


ACCN: NM_020777

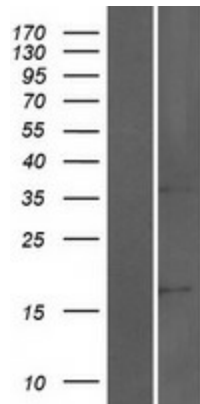
ORF Size: 3477 bp

OTI Disclaimer:	The molecular sequence of this clone aligns with the gene accession number as a point of reference only. However, individual transcript sequences of the same gene can differ through naturally occurring variations (e.g. polymorphisms), each with its own valid existence. This clone is substantially in agreement with the reference, but a complete review of all prevailing variants is recommended prior to use. More info
OTI Annotation:	This clone was engineered to express the complete ORF with an expression tag. Expression varies depending on the nature of the gene.
Components:	The ORF clone is ion-exchange column purified and shipped in a 2D barcoded Matrix tube containing 10ug of transfection-ready, dried plasmid DNA (reconstitute with 100 ul of water).
Reconstitution Method:	<ol style="list-style-type: none">1. Centrifuge at 5,000xg for 5min.2. Carefully open the tube and add 100ul of sterile water to dissolve the DNA.3. Close the tube and incubate for 10 minutes at room temperature.4. Briefly vortex the tube and then do a quick spin (less than 5000xg) to concentrate the liquid at the bottom.5. Store the suspended plasmid at -20°C. The DNA is stable for at least one year from date of shipping when stored at -20°C.
RefSeq:	NM_020777.3
RefSeq ORF:	3480 bp
Locus ID:	57537
UniProt ID:	Q96PQ0
Cytogenetics:	4p16.1
Protein Families:	Druggable Genome, Transmembrane
MW:	128 kDa
Gene Summary:	This gene encodes one family member of vacuolar protein sorting 10 (VPS10) domain-containing receptor proteins. The VPS10 domain name comes from the yeast carboxypeptidase Y sorting receptor Vps10 protein. Members of this gene family are large with many exons but the CDS lengths are usually less than 3700 nt. Very large introns typically separate the exons encoding the VPS10 domain; the remaining exons are separated by much smaller-sized introns. These genes are strongly expressed in the central nervous system. [provided by RefSeq, Jul 2008]

Product images:



Circular map for RC229412



Western blot validation of overexpression lysate (Cat# [LY432421]) using anti-DDK antibody (Cat# [TA50011-100]). Left: Cell lysates from untransfected HEK293T cells; Right: Cell lysates from HEK293T cells transfected with RC229412 using transfection reagent MegaTran 2.0 (Cat# [TT210002]).