

Product datasheet for **RC229397**

PCDH20 (NM_022843) Human Tagged ORF Clone

Product data:

Product Type:	Expression Plasmids
Product Name:	PCDH20 (NM_022843) Human Tagged ORF Clone
Tag:	Myc-DDK
Symbol:	PCDH20
Synonyms:	PCDH13
Mammalian Cell Selection:	Neomycin
Vector:	pCMV6-Entry (PS100001)
E. coli Selection:	Kanamycin (25 ug/mL)



[View online »](#)

ORF Nucleotide
Sequence:

>RC229397 representing NM_022843
 Red=Cloning site Blue=ORF Green=Tags(s)

TTTTGTAATACGACTCACTATAGGGCGGCCGGAATTCGTCGACTGGATCCGGTACCGAGGAGATCTGCC
 GCCGCGATCGCC

ATGCGCGGCCGAGGGAATGCGCGCAGCTCACAGGCCCTGGGAGTGAGCTGGTCCCGCGCAGCTGGCACC
 CGCGCCTGGATATGGGGGTCTACATCGTCCCAGGAGCAGCACCAGCTACAGGAACCTGCCGCATCTGTT
 TCTGTTTTTCTTCTCGTGGGACCTTCAGCTGCCTCGGGAGTTACAGCCGGGCCACCGAGCTTCTGTAC
 AGCCTAAACGAGGGACTACCGCGGGGGTCTCATCGGCAGCCTGGCCGAGGACCTGCGGCTGCTGCCCA
 GGTCTGCAGGGAGGCCGACCCGAGTCGAGCTGCCAGAGCGCACCAGTGTGAGTGAACCCCTCTCT
 CTCCTCAGCCTGGCCTCCCGGGGACTGAGTGCCAGTACGTGACCCTAGACAACCGCTCTGGGAGCTG
 CACTTTCAGCTCAGGAGATCGACAGGGAGGCCCTGTGTGTTGAAGGGGTGGAGGGACTGCGTGGAGCG
 GCAGCGTTTCCATCTCCTCTCCTTCTGACTTTGTCTTTGTGCTGGATGTGCTTGTCTGCCTCA
 GGAATACTTCAGTTTTGTGAAGGTGAAGATCGCCATCAGAGACATCAATGACAACGCCCCGAGTCCCT
 GTTCCCAGATCTCGGTGTGGGTCCCGAAAATGCACCTGTAAACACCCGACTGGCCATAGAGCATCCTG
 CTGTGGACCCAGATGTAGGCATTAATGGGGTACAGACCTATCGCTTACTGGACTACCATGGTATGTTTAC
 CCTGGACGTGGAGGAGAATGAGAATGGGGAGCGCACCCCTACCTAATTGTATGGGTGCTTTGGACAGG
 GAAACCCAGGACAGTATGTGAGCATCATAGCTGAGGATGGTGGGTCTCCACCACTTTTGGCAGTG
 CCACTCTCACCATTGGCATCAGTGACATTAATGACAATTGCCCTCTTTCACAGACTCACAATCAATGT
 CACTGTGTATGGGAATGCTACAGTGGGCACCCCAATTGCAGCTGTCCAGGCTGTGGATAAAGACTTGGG
 ACCAATGCTCAAATTACTTATTCTTACAGTCAGAAAGTCCACAAGCATCTAAGGATTTATTTACCTGG
 ATGAAAAACACTGGAGTCATTAACCTTTTCAGTAAGATTGGAGGAAGTGTCTGGAGTCCCACAAGCTCAC
 CATCCTTGCTAATGGACCAGGCTGCATCCCTGCTGTAATCACTGCTCTTGTGTCCATTATTAAGTTATT
 TTCAGACCCCTGAAATTGTCCCTCGTTACATAGCAAACGAGATAGATGGTGTGGTTTATCTGAAAGAAC
 TGGAACCCGTTAACACTCCCATTGCGTTTTTACCATAAGAGATCCAGAAGGTAAATACAAGTTAACTG
 CTACCTGGATGGTGAAGGGCCGTTTAGGTTATCACCTTACAAACCATAACAATAATGAATATTTACTAGAG
 ACCACAAAACCTATGGACTATGAGCTACAGCAGTTCTATGAAGTAGCTGGTGGCTTGGAACTCTGAGG
 GATTTTCATGTCAAAGGGTCATTAAGTGAACCTTTTAGATGACAATGATAATGCTCCAATTTTCTTCA
 ACCCTTAATAGAACTAACATCGAAGAGAACTCACCAATGCCTTTTGGACTAAGCTGTATGCTACA
 GATGCCGACAGCGAGGAGAGAGGCCAAGTTTCATATTTTCTGGGACCTGATGCTCCATCATATTTTCT
 TAGACAGTGTACAGGAATTCTGACAGTTTCTACTCAGCTGGACCAGAGAAGAGAAAAGTACAGATA
 CACTGTACAGACTGTTGACTGTGGGAAGCCACCCAGAGAATCAGTAGCCACTGTGGCCCTCACAGTGTG
 GATAAAAATGACAACAGTCCCTCGGTTTATCAACAAGGACTTCAGCTTTTTTGTGCCTGAAAACCTTCCAG
 GCTATGGTGAAGTGGAGTAATTAGTGAACAGATGCTGACGCTGGACGAAATGGATGGGTGCGCCCTCTC
 TGTGGTGAACCAGAGTGATATTTTGTGATAGATACAGGAAAGGGTATGCTGAGGGCTAAAGTCTCTTTG
 GACAGAGAGCAGCAAAGCTCCTATACTTTGTGGTTGAAGCTGTTGATGGGGGTGAGCCTGCCCTCCT
 CTACAGCAAAAATCAAACTCCTTCTAGATATCAATGACAACCCTCCTTGTTTTGTCTCCTCAGTC
 TAATATGTCTTATCTGTTAGTACTGCCTTCTACTCTGCCAGGCTCCCGGTTACAGAAGTCTATGCTGTC
 GACAAAGACACAGGCATGAATGCTGTATAGCTTACAGCATCATAGGGAGAAGAGGTCCTAGGCCTGAGT
 CCTTCAGGATTGACCCTAAAACCTGGCAACATTACTTTGGAAGAGGCATTGCTGCAGACAGATTATGGGCT
 CCATCGTTACTGGTGAAGTGAAGTATGATGTTATCCCGAGCCTCTCCACTCCACAGTCATGGTGAAC
 CTATTTGTCAATGACTGTCAGTAATGAGAGTTACATTGAGAGTCTTTTAAGAAAAGAACCAGAGATTA
 ATATAGAGGAGAAAGAACCACAAATCTCAATAGAACCAGTCTATAGGAAGGTAGAATCTGTGCTTGTAT
 GCCCACCTTAGTAGCTGTCTGTAATAAGCTTGGGTTCCATCACACTGGTCACAGGGATGGGCATATAC
 ATCTGTTTAAGGAAAGGGGAAAAGCATCCAGGGAAGATGAAAATTTGGAAGTACAGATTCCACTGAAAG
 GAAAATTTGACTTGCATATGCGAGAGAGAAAGCCAATGGATATTTCTAATATT

ACGCGTACGCGGCCGCTCGAGCAGAACTCATCTCAGAAGAGGATCTGGCAGCAAATGATATCCTGGATT
 ACAAGGATGACGACGATAAGGTTTAA

Protein Sequence: >RC229397 representing NM_022843
 Red=Cloning site Green=Tags(s)

MRGRGNARSSQALGVSWCPATWHPRLDMGRLHRPRSSTSYRNLPHLFLFFLVGPFSCLSYSRATALLY
 SLNEGLPAGVLIGSLAEDLRLPRSAGRDPDQSQLPERTGAENPPLSFLASRGLSGQYVTLDNRSSEL
 HTSAQEIDREALCVEGGGTAWSGSVSISSSPDSCLLLLDVLPQYFRFVKVKIAIRDINDNAPQFP
 VSQISVWVPENAPVNTLRAIEHPAVDPDVGINGVQTYRLLDYHGMFTLDVEENENGERTPYLIVMGALDR
 ETQDQYVSIIIAEDGGSPLLGSATLTIGISDINDNCPLFTDSQINVTYGNATVGTPIAAVQAVDKDLG
 TNAQITYSYSQKVPQASKDLFHLIDENTGVIKLFSKIGGSVLESHKLTILANGPGCPAVITALVSIKVI
 FRPPEIVPRYIANEIDGVVYLKELEPVNTPIAFFTIRDPEGKYKVNCLDGEKPFRLSPYKPYNNEYLLE
 TTKPMDYELQQFYEVAVVAVNSEGPHVVKVQIKVQLDDNDNAPIFLQPLIELTIEENNSPNAFLTKLYAT
 DADSEERGQVSYFLGPDAPSYFLDSVTGILTVSTQLDREEKEKYRYTVRAVDCGKPPRESVATVALTVL
 DKNDNSPRFINKDFSFFVPENFPGYGEIGVISVTDADAGRNGWVALSVNQSDIFVIDTGKMLRAKVS
 DREQQSSYTLWVEAVDGGEPALSSAKITILLDINDNPPLVLPQSNMSYLLVLPSTLPGSPVTEVYAV
 DKDTGMNAVIAYSIIIGRRGPRPESFRIDPKTGNITLEEALLQTDYGLHRLLVKVS DHGYPEPLHSTVMVN
 LFNVDTVSNESYIESLLRKEPEINIEEKEPQISIEPTHRKVESVSCMPTLVALSVISLGSITLVTMGIY
 ICLRKGEKHPREDENLEVQIPLKGIKIDLHMRERKPMDISNI

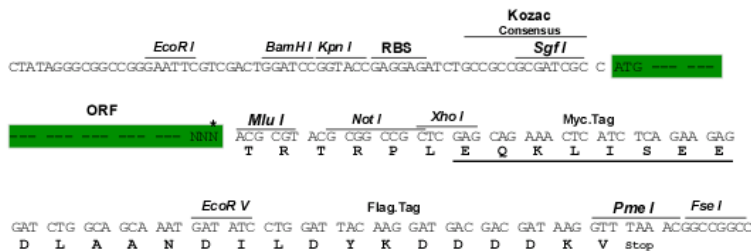
TRTRPLEQKLISEEDLAANDILDYKDDDDKV

Chromatograms: https://cdn.origene.com/chromatograms/mk8010_h05.zip

Restriction Sites: SgfI-MluI

Cloning Scheme:

Cloning sites used for ORF Shuttling:



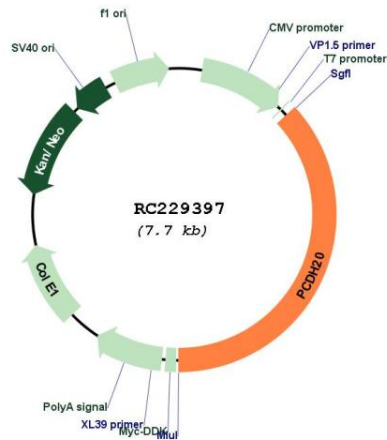
* The last codon before the Stop codon of the ORF

ACCN: NM_022843

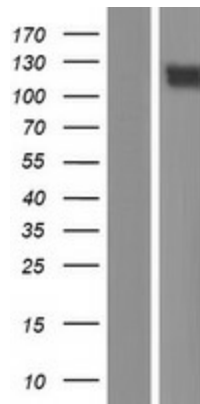
ORF Size: 2853 bp

OTI Disclaimer:	The molecular sequence of this clone aligns with the gene accession number as a point of reference only. However, individual transcript sequences of the same gene can differ through naturally occurring variations (e.g. polymorphisms), each with its own valid existence. This clone is substantially in agreement with the reference, but a complete review of all prevailing variants is recommended prior to use. More info
OTI Annotation:	This clone was engineered to express the complete ORF with an expression tag. Expression varies depending on the nature of the gene.
Components:	The ORF clone is ion-exchange column purified and shipped in a 2D barcoded Matrix tube containing 10ug of transfection-ready, dried plasmid DNA (reconstitute with 100 ul of water).
Reconstitution Method:	<ol style="list-style-type: none">1. Centrifuge at 5,000xg for 5min.2. Carefully open the tube and add 100ul of sterile water to dissolve the DNA.3. Close the tube and incubate for 10 minutes at room temperature.4. Briefly vortex the tube and then do a quick spin (less than 5000xg) to concentrate the liquid at the bottom.5. Store the suspended plasmid at -20°C. The DNA is stable for at least one year from date of shipping when stored at -20°C.
Note:	Plasmids are not sterile. For experiments where strict sterility is required, filtration with 0.22um filter is required.
RefSeq:	NM_022843.3 , NP_073754.2
RefSeq ORF:	2856 bp
Locus ID:	64881
UniProt ID:	Q8N6Y1
Cytogenetics:	13q21.2
Domains:	CA
Protein Families:	Druggable Genome, Transmembrane
MW:	104.7 kDa
Gene Summary:	This gene belongs to the protocadherin gene family, a subfamily of the cadherin superfamily. This gene encodes a protein which contains 6 extracellular cadherin domains, a transmembrane domain and a cytoplasmic tail differing from those of the classical cadherins. Although its specific function is undetermined, the cadherin-related neuronal receptor is thought to play a role in the establishment and function of specific cell-cell connections in the brain. [provided by RefSeq, Jul 2008]

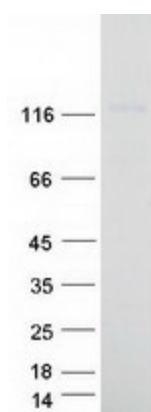
Product images:



Circular map for RC229397



Western blot validation of overexpression lysate (Cat# [LY432406]) using anti-DDK antibody (Cat# [TA50011-100]). Left: Cell lysates from untransfected HEK293T cells; Right: Cell lysates from HEK293T cells transfected with RC229397 using transfection reagent MegaTran 2.0 (Cat# [TT210002]).



Coomassie blue staining of purified PCDH20 protein (Cat# [TP329397]). The protein was produced from HEK293T cells transfected with PCDH20 cDNA clone (Cat# RC229397) using MegaTran 2.0 (Cat# [TT210002]).