

Product datasheet for **RC229375**

SH3D19 (NM_001009555) Human Tagged ORF Clone

Product data:

Product Type:	Expression Plasmids
Product Name:	SH3D19 (NM_001009555) Human Tagged ORF Clone
Tag:	Myc-DDK
Symbol:	SH3D19
Synonyms:	EBP; Eve-1; EVE1; Kryn; SH3P19
Mammalian Cell Selection:	Neomycin
Vector:	pCMV6-Entry (PS100001)
E. coli Selection:	Kanamycin (25 ug/mL)



[View online »](#)

ORF Nucleotide Sequence:

>RC229375 representing NM_001009555
 Red=Cloning site Blue=ORF Green=Tags(s)

TTTTGTAATACGACTCACTATAGGGCGGCCGGGAATTCGTCGACTGGATCCGGTACCGAGGAGATCTGCC
 GCC**CGGATCGCC**

ATGAACATTATGAACACAGAACAAGCCAAAATAGTATTGTTTCCAGAATTAAAGTGTGGAGGTCAGAC
 CAAACATAGAAAACCTCAGGACTGCCAAGAAACCAGAAATTAAGTCCACGTTCACTTCCTCCAAAGCCTAC
 TGTTTCTCAGGGAAACCTTCTGTAGCTCCAAACCAGCTGCTAACAGAGCTTCTGGAGAGTGGGACTCT
 GGGACTGAGAACAGACTCAAGGTGACCTCCAAGGAAGGACTCACCCCATACCTCCCTGCAAGAAGCGG
 GAAGCATCCAGTAACCAAACCTGAATTGCCAAAGAAACCAAACCTGGCCTTATACGAAGTGTAAATCC
 TGAGATTCGGGAAGAGGGCCCTGGCTGAGAGCTCTGATAGTGGGAAGAAAGTCCAACTCCTGCCCG
 CGGCCTTGTCTGTAAGAAATCTGTTTCTCAGAAAACCCACCTACCTTCAGCTCCACTGAAACCTG
 TCACTGTTCTCCCGACTCGCAGGGGCATCACAAGCCAAAGCATACAAGTCACTGGGAGAAGGGCCCC
 AGCCAACCCCGAGTCCAGTTCGAGAGCAAGCCCTTGGTGGACATCGATCTCATCAGCTTTGATGAT
 GATGTTTTGCCACCCCATCGGGGAACCTGGCTGAAGAATCTGTTGGTTCAGAGATGGTTCTAGATCCCT
 TTCAGCTCCCTGCAAAAACAGAACCAATAAAAGAACGAGCAGTTCAACAGCACCCACCAGGAAGCCAC
 TGTAATTCGAATTCAGCCAAACCAGGAAAATGTTTACATGAGGATCCACAAAGTCCACCTCCTCTCCCT
 GCTGAAAACCTATTGGAACACTTTCAGTACAGTATCTGGAAAGCTCAGTAATGTTGAGAGAAGTAGAA
 ACTTGGAATCCAACCACCCAGGTCAAACAGGAGTTTTGTGCGAGTACCCCAAGGTTGCCACCGAGACC
 TGTGAATGGAAAACCAATCCAACCTCAACAGCCTCCAACCAAGGTGCCCCCTGAGAGACCACCTCCCCA
 AAGCTTCTGCAACCAGAAGATCTAATAAGAACTGCCTTTAATCGATCCTCTTCTGACATGGATCTTC
 AGAAAAACAAAGTAACCTGGCAACTGGACTCTCAAAGCCAAGAGTCAAGTTTTTAAAAAATCAAGATCC
 GGTGCTACCCCTCGTCCCAAACCAGGACACCCTCTACAGTAAATACATGCTGTCTGTGCCTCATGGA
 ATTGCCAATGAAGATATTGCTCTCAAAACCCCGGAGAAGTCTCTTGTAAAGCGTGGGGATGACTTGTGA
 TGCTGAAGCAGACGAAAATAATTAAGTGGAGTGC AAAAGGGAGAAGACTGGCAGAGTTCACCTGTC
 TCAAATGAAGATTACTCCACTTGTGAACATCTTAGAAGCAGACCAAACGATCCAAGCCACGCTCAG
 AAGCTGTTGACAGTGGTCTCCTCATGCTGTCGTTCTTCATGATTTCCAGCAGAGCAAGTTGATGATT
 TGAACCTCACTTGGAGAAATGTTTATCTTCTGGAGAAGATAGATACAGATTGGTACAGAGGGAAGT
 TAGAAACCAGATTGGCATATTTCTGCCAACTATGTCAAAGTATTATTGATATCCAGAAGGAGGAAAT
 GGGAAAAGAGAATGTGTTTCATCTCATTGTGTTAAAGGCTCAAGATGTGTTGCTCGGTTTGAATATATTG
 GAGAGCAGAAGGATGAGTTGAGTTTCTCAGAGGGAGAAATTAATTTCTTAAAGAGTATGTGAATGAGGA
 ATGGGCCAGAGGAGAAGTTCGAGGCAGAACTGGGATTTTCCCCCTGAACTTTGTGGAGCCTGTTGAGGAT
 TATCCACCTCTGGTGCAAAATGTTTTAAGCACAAAGGTACCCTGAAAACCAAAAAGAAGATTCTGGCT
 CAAACTCTCAGTTAACAGTCTTCCGGCAGAAATGGTGTGAAGCTCTTACAGTTTTACAGCAGAGACCAG
 TGATGACTTATCATTCAAGAGGGGAGACCCGATCCAGATTCTGGAACGTCTGGATTCTGACTGGTGCAGG
 GGCAGACTGCAGGACAGGGAGGGGATCTCCAGCAGTGTGTTGTGAGGCCCTGCCAGCTGAGGCAAAAA
 GTATGTTGGCCATAGTACCGAAGGGGAGGAAGGCCAAAGCCTTATGATTTCCGAGGGGAGAATGAAGA
 TGAACCTTCTTCAAGGCTGGAGATATAATAACAGAGCTGGAATCTGTAGATGATGACTGGATGAGTGGA
 GAACTTATGGGAAAATCTGGAATATTTCCAAAAACTACATACAGTTTCTACAGATCAGC

ACGCGTACGCGGCCGCTCGAGCAGAAACTCATCTCAGAAGAGGATCTGGCAGCAAATGATATCCTGGATT
 ACAAGGATGACGACGATAAGGTTTAA

Protein Sequence: >RC229375 representing NM_001009555
Red=Cloning site Green=Tags(s)

MNIMNTEQSQNSIVSRIKVFEGQTNIETSGLPKKPEITPRSLPPKPTVSSGKPSVAPKPAANRASGEWDS
GTENRLKVTKEGLTPYPPLQEAGSIPVTKPELPKKPNPGLIRSVNPEIPGRGPLAESSDSGKKVPTPAP
RPLLLKKSVSSENPTYPSAPLKPVTVPRLAGASQAKAYKSLGEGPPANPPVPLQSKPLVDIDLISFDD
DVLPTPSGNLAEESVGSEMVLDPFQLPAKTEPIKERAVQPAPTRKPTVIRIPAKPGKCLHEDPQSPPPLP
AEKPIGNTFSTVSGKLSNVERTRNLESNHGQTGGFVRVPPRLPPRPVNGKTIPTQQPPTKVPPERPPPP
KLSATRRSNKCLPFNRSSDMDLQKKQSNLATGLSKAKSQVFKNQDPVLPKPKGHPLYSKYMLSVPHG
IANEDIVSQNPGELESCKRGDVLVMLKQTENNYLECGEDTGRVHLSQMKIITPLDEHLRSRPNPASHAQ
KPVDSGAPHAVLHDFPAEQVDDLNLTSGEIVYLLEKIDTDWYRGNCRNQIGIFPANYVKVIIDIPEGGN
GKRECVSSHCVKGSRCVARFEYIGEQLDELSEGEIILKEYVNEEWARGEVGRGTGIFPLNFVEPVED
YPTSGANVLSTKVPLKTKKEDSGSNSQVNSLPAEWCEALHSFTAETSDDL SFKRGDRIQILERLSDWCR
GRLQDREGIFPAVVRPCPAEAKSMLAIVPKGRKAKALYDFRGENEDEL SFKAGDIITELESVDDDDWMSG
ELMGKSGIFPKNYIQFLQIS

TRTRPLEQKLISEEDLAANDILDYKDDDDKV

Chromatograms: https://cdn.origene.com/chromatograms/mk8035_e09.zip

Restriction Sites: Sgfl-Mlul

Cloning Scheme:


ACCN: NM_001009555

ORF Size: 2370 bp

OTI Disclaimer: The molecular sequence of this clone aligns with the gene accession number as a point of reference only. However, individual transcript sequences of the same gene can differ through naturally occurring variations (e.g. polymorphisms), each with its own valid existence. This clone is substantially in agreement with the reference, but a complete review of all prevailing variants is recommended prior to use. [More info](#)

OTI Annotation: This clone was engineered to express the complete ORF with an expression tag. Expression varies depending on the nature of the gene.

Components: The ORF clone is ion-exchange column purified and shipped in a 2D barcoded Matrix tube containing 10ug of transfection-ready, dried plasmid DNA (reconstitute with 100 ul of water).

Reconstitution Method:

1. Centrifuge at 5,000xg for 5min.
2. Carefully open the tube and add 100ul of sterile water to dissolve the DNA.
3. Close the tube and incubate for 10 minutes at room temperature.
4. Briefly vortex the tube and then do a quick spin (less than 5000xg) to concentrate the liquid at the bottom.
5. Store the suspended plasmid at -20°C. The DNA is stable for at least one year from date of shipping when stored at -20°C.

RefSeq: [NM_001009555.3](#), [NP_001009555.3](#)

RefSeq ORF: 2373 bp

Locus ID: 152503

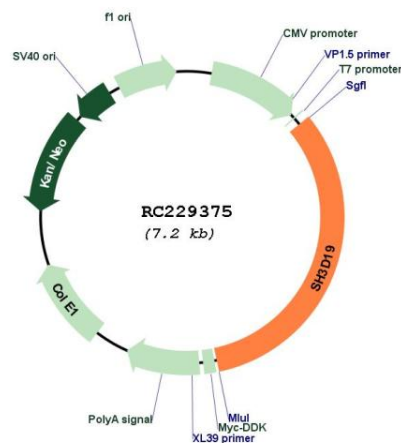
UniProt ID: [Q5HYK7](#)

Cytogenetics: 4q31.3

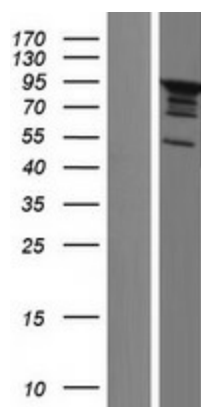
MW: 86.3 kDa

Gene Summary: This gene encodes a multiple SH3 domain-containing protein, which interacts with other proteins, such as EBP and members of ADAM family, via the SH3 domains. This protein may be involved in suppression of Ras-induced cellular transformation and Ras-mediated activation of ELK1 by EBP, and regulation of ADAM proteins in the signaling of EGFR-ligand shedding. Alternatively spliced transcript variants encoding different isoforms have been found for this gene. [provided by RefSeq, Aug 2011]

Product images:



Circular map for RC229375



Western blot validation of overexpression lysate (Cat# [LY432388]) using anti-DDK antibody (Cat# [TA50011-100]). Left: Cell lysates from untransfected HEK293T cells; Right: Cell lysates from HEK293T cells transfected with RC229375 using transfection reagent MegaTran 2.0 (Cat# [TT210002]).