

Product datasheet for **RC229371**

MMEL1 (NM_033467) Human Tagged ORF Clone

Product data:

Product Type:	Expression Plasmids
Product Name:	MMEL1 (NM_033467) Human Tagged ORF Clone
Tag:	Myc-DDK
Symbol:	MMEL1
Synonyms:	MMEL2; NEP2; NEPII; NL1; NL2; SEP
Mammalian Cell Selection:	Neomycin
Vector:	pCMV6-Entry (PS100001)
E. coli Selection:	Kanamycin (25 ug/mL)



[View online »](#)

ORF Nucleotide Sequence:

>RC229371 representing NM_033467
 Red=Cloning site Blue=ORF Green=Tags(s)

TTTTGTAATACGACTCACTATAGGGCGGCCGGAATTCGTCGACTGGATCCGGTACCGAGGAGATCTGCC
 GCC**CGGATCGCC**

ATGGGGAAGTCCGAAGGCCAGTGGGGATGGTGGAGAGCGCCGGCGTGCAGGGCAGAAGCGCCCGGGT
 TCCTGGAGGGGGGCTGCTGCTGCTGCTGCTGGTGAACCGCTGCCCTGGTGGCCTTGGGTGTCCTCTA
 CGCCGACCGCAGAGGGAAGCAGCTGCCACGCTTGTAGCCGGCTGTGCTTCTTACAGGAGGAGAGGACC
 TTTGTA AAAACGAAAACCCGAGGGATCCAGAGGCCAAGAGGTGAGCGAGGTCTGCACCACCCCTGGCT
 GCGTGATAGCAGCTGCCAGGATCCTCCAGAACATGGACCCGACCACGGAACCGTGTGACGACTTCTACCA
 GTTTGCATGCGGAGGCTGGTGC GGCGCCACGTGATCCCTGAGACCAACTCAAGATACAGCATCTTTGAC
 GTCCTCCGCGACGAGCTGGAGGTATCCTCAAAGCGGTGCTGGAGAATTCGACTGCCAAGGACCGGCCGG
 CTGTGGAGAAGGCCAGGACGCTGTACCGCTCCTGCATGAACCAGAGTGTGATAGAGAAGCGAGGCTCTCA
 GCCCTGCTGGACATCTGGAGGTGGTGGGAGGCTGGCCGGTGGCGATGGACAGGTGGAACGAGACCGTA
 GGA CTGAGTGGGAGCTGGAGCGCAGCTGGCGCTGATGAACTCACAGTTCAACAGGCGCGTCTCATCG
 ACCTCTTCATCTGGAACGACGACCAGA ACTCCAGCCGGCACATCATCTACATAGACCAGCCACCTTGGG
 CATGCCCTCCCGAGAGTACTACTTCAACGGCGGCAGCAACCGGAAGGTGCGGGAAGCCTACCTGCAGTTC
 ATGGTGTGAGTGGCCACGTTGCTGCGGGAGGATGCAAACCTGCCAGGGACAGCTGCCTGGTGCAGGAGG
 ACATGGTGCAGGTGCTGGAGCTGGAGACACAGCTGGCCAAGGCCACGGTACCCAGGAGGAGAGACACGA
 CGTCATCGCCTTGTACCACCGGATGGGACTGGAGGAGCTGCAAAGCCAGTTTGGCCTGAAGGGATTTAAC
 TGGACTGTTCATACAAACTGTGCTATCCTCTGTCAAATCAAGCTGCTGCCAGATGAGGAAGTGGTGG
 TCTATGGCATCCCCTACCTGCAGAACCTTGAAAACATCATCGACACCTACTCAGCCAGGACCATAGAA
 CTACCTGGTCTGGCGCCTGGTGTGAGACCGCATTGGTAGCCTAAGCCAGAGATTCAAGGACACACGAGTG
 AACTACCGCAAGGCGCTGTTGGACAATGGTGGAGGAGGTGCGCTGGCGTGAATGTGTGGGCTACGTCA
 ACAGCAACATGGAGAACGCCGTGGGCTCCCTCTACGTGAGGGAGGCGTTCCTGGAGACAGCAAGAGCAT
 GGTGAGAGAACTATTGACAAGGTGCGGACAGTGTGGTGGAGACGCTGGACGAGCTGGGCTGGATGGAC
 GAGGAGTCCAAGAAGAAGGCGCAGGAGAAGGCCATGAGCATCCGGGAGCAGATCGGGCACCCCTGACTACA
 TCCTGGAGGAGATGAACAGGCGCCTGGACGAGGAGTACTCCAATCTGAACTTCTCAGAGGACCTGTACTT
 TGAGAACAGTCTGCAGAACCTCAAGGTGGGCGCCAGCGGAGCCTCAGGAAGCTTCGGGAAAAGGTGGAC
 CCAAATCTCTGGATCATCGGGCGCGGTGGTCAATGCGTTCTACTCCCCAAACCGAAACAGATTGTAT
 TCCTGCCGGGATCCTCCAGCCCCCTTCTCAGCAAGGAGCAGCCACAGGCCTTGAACCTTGGAGGAT
 TGGGATGGTGTGATCGGGCACGAGATCACGCACGGCTTTGACGACAATGGCCGGAACCTCGACAAGAATGGC
 AACATGATGGATTGGTGGAGTA ACTTCTCCACCCAGCACTTCCGGGAGCAGTCAAGTGCATGATCTACC
 AGTACGGCAACTACTCCTGGGACCTGGCAGACGAACAGACGTGAACGGATTCAACACCCTTGGGAAAA
 CATTGCTGACAACGAGGGGTGCGGCAAGCCTATAAGGCCTACCTCAAGTGGATGGCAGAGGGTGGCAAG
 GACCAGCAGCTGCCCGCCTGGATCTCACCCATGAGCAGCTCTTCTTCACTCAACTATGCCAGGTGTGGT
 GCGGGTCTACCGGCCGAGTTCCGCATCCAATCCATCAAGACAGACGTCCACAGTCCCCGAAAGTACAG
 GGTA CTGGGTGCTGCAGAACCTGGCCGCTTCGCAGACAGTTCCTACTGTGCCGGGGCACCCCCATG
 CACCCCAAGGAGCGATGCCCGTGTGG

ACGCGTACGCGGCCGCTCGAGCAGAAACTCATCTCAGAAGAGGATCTGGCAGCAAATGATATCCTGGATT
 ACAAGGATGACGACGATAAGGTTTAA

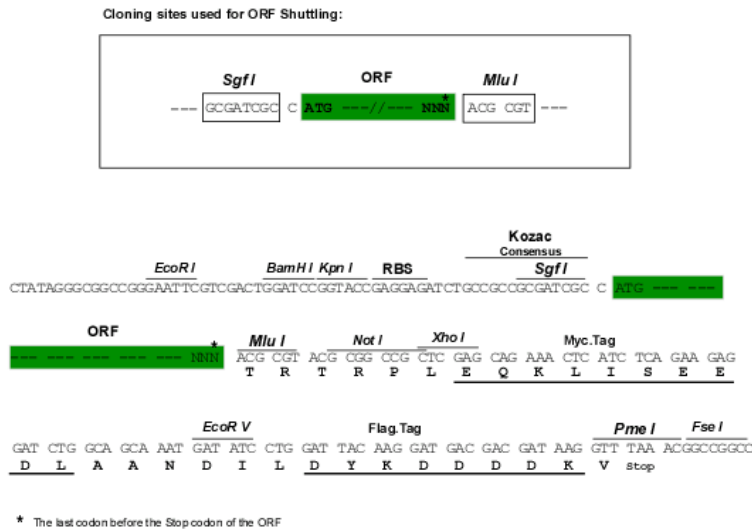
Protein Sequence: >RC229371 representing NM_033467
Red=Cloning site Green=Tags(s)

MGKSEGPVGMVESAGRAGQKRPGFLEGGLLLLLLLLVTAALVALGVLYADRRGKQLPRLASRLCFLQEERT
FVKRKPRGIPEAQEVSEVCTTPGCVIAAARILQNMDPTTEPCDDFYQFACGGWLRRHVIPETNSRYSIFD
VLRDELEVILKAVLENSTAKDRPAVEKARTLYRSCMNQSVIEKRGSQLLDILEVVGWVAMDRWNETV
GLEWELERQLALMNSQFNRRVLIDLFIWNDDQNSRHIIYIDQPTLGMPSREYFNGGSNRKVREAYLQF
MYSVATLLREDANLPRDSCLVQEDMVQVLELETQLAKATVPQEERHDVIALYHRMGLEELQSQFGLKGFN
WTLFIQTVLSSVKIKLLPDEEVVYGIPLYQNLNIIDTYSARTIQNYLVWRLVLDRIIGLSQRFKDTRV
NYRKALFGTMVEEVRWRECVGYVNSNMENAVGSLYVREAFPGDSKSMVRELIDKVRTVFVETLDELGWMD
EESKKAQEKAMSIREQIGHDPYILEEMNRRLDEEYSNLNFSEDLYFENSLQNLKVGAQRSLRKLREKVD
PNLWIIGA AVVNAFYSPNRNQIVFPAGILQPPFFSKEQPQALNFGGIGMVI GHEITHGFDDNGRNF DKNG
NMMDWWSNFSTQHFREQSECMYQYGNYSWDLADEQNVNGFNTLGENIADNGGVRQAYKAYLKWMAEGGK
DQQLPGLDLTHEQLFFINYAQVWCGSYRPEFAIQSIKTDVHSPLKYRVLGSLQNLAAFADTFHCARGTPM
HPKERCRVW

TRTRPLEQKLISEEDLAANDILDYKDDDDKV

Chromatograms: https://cdn.origene.com/chromatograms/mk8117_b08.zip

Restriction Sites: Sgfl-Mlul

Cloning Scheme:


ACCN: NM_033467

ORF Size: 2337 bp

OTI Disclaimer: The molecular sequence of this clone aligns with the gene accession number as a point of reference only. However, individual transcript sequences of the same gene can differ through naturally occurring variations (e.g. polymorphisms), each with its own valid existence. This clone is substantially in agreement with the reference, but a complete review of all prevailing variants is recommended prior to use. [More info](#)

OTI Annotation: This clone was engineered to express the complete ORF with an expression tag. Expression varies depending on the nature of the gene.

Components: The ORF clone is ion-exchange column purified and shipped in a 2D barcoded Matrix tube containing 10ug of transfection-ready, dried plasmid DNA (reconstitute with 100 ul of water).

Reconstitution Method:

1. Centrifuge at 5,000xg for 5min.
2. Carefully open the tube and add 100ul of sterile water to dissolve the DNA.
3. Close the tube and incubate for 10 minutes at room temperature.
4. Briefly vortex the tube and then do a quick spin (less than 5000xg) to concentrate the liquid at the bottom.
5. Store the suspended plasmid at -20°C. The DNA is stable for at least one year from date of shipping when stored at -20°C.

RefSeq: [NM_033467.4](#)

RefSeq ORF: 2340 bp

Locus ID: 79258

UniProt ID: [Q495T6](#)

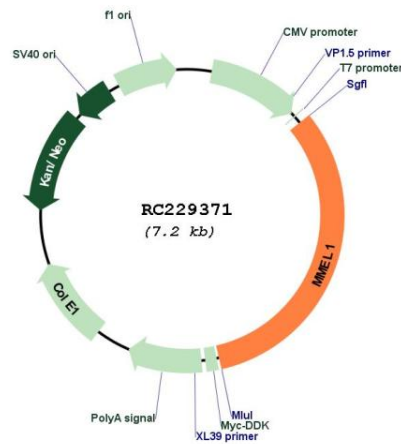
Cytogenetics: 1p36.32

Protein Families: Druggable Genome, Protease, Secreted Protein, Transmembrane

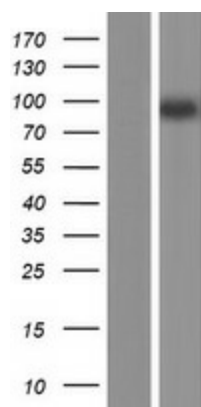
MW: 89.2 kDa

Gene Summary: The protein encoded by this gene is a member of the neutral endopeptidase (NEP) or membrane metallo-endopeptidase (MME) family. Family members play important roles in pain perception, arterial pressure regulation, phosphate metabolism and homeostasis. This protein is a type II transmembrane protein and is thought to be expressed as a secreted protein. This gene is expressed mainly in testis with weak expression in the brain, kidney, and heart. [provided by RefSeq, Jul 2008]

Product images:



Circular map for RC229371



Western blot validation of overexpression lysate (Cat# [LY432384]) using anti-DDK antibody (Cat# [TA50011-100]). Left: Cell lysates from untransfected HEK293T cells; Right: Cell lysates from HEK293T cells transfected with RC229371 using transfection reagent MegaTran 2.0 (Cat# [TT210002]).