

Product datasheet for **RC229358**

Calpain 11 (CAPN11) (NM_007058) Human Tagged ORF Clone

Product data:

Product Type:	Expression Plasmids
Product Name:	Calpain 11 (CAPN11) (NM_007058) Human Tagged ORF Clone
Tag:	Myc-DDK
Symbol:	Calpain 11
Synonyms:	calpain11
Mammalian Cell Selection:	Neomycin
Vector:	pCMV6-Entry (PS100001)
E. coli Selection:	Kanamycin (25 ug/mL)



[View online »](#)

ORF Nucleotide
Sequence:

>RC229358 representing NM_007058
Red=Cloning site Blue=ORF Green=Tags(s)

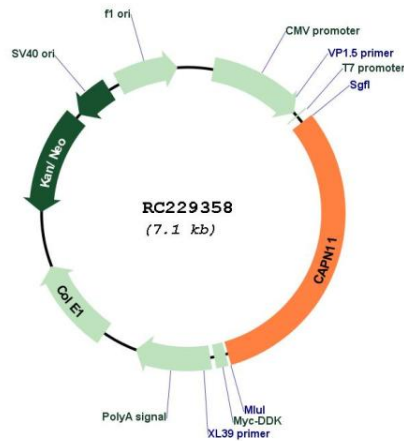
TTTTGTAATACGACTCACTATAGGGCGGCCGGAATTCGTCGACTGGATCCGGTACCGAGGAGATCTGCC
GCCGCGATCGCC

ATGCTGTACTCCCAGGGCCGAGTCTTCCGGAGTCAGCAGAGAGCCTGGATGGATCACAGGAGGATAAGC
CTCGGGGCTCATGTGCGGAGCCACTTTTACTGATACGGGAATGGTGGCTCACATAAACAACAGCCGGCT
CAAGGCCAAGGGCGTGGGCCAGCACGACAAACGCCCAGAATTTGGTAACCAGAGCTTTGAGGAGCTGCGA
GCAGCCTGTCTAAGAAAGGGGGAGCTCTTCGAGGACCCCTTATTCCTGTGAACCCAGCTCACTGGGCT
TCAAGGACCTGGGCCCAACTCCAAAAATGTGCAGAACATCTCCTGGCAGCGGCCCAAGGATATCATAAA
CAACCCTCTATTCATCATGGATGGGATTCTCCAACAGACATCTGCCAGGGGATCCTCGGGGACTGCTGG
CTGCTGGCTGCCATCGGCTCCCTTACCACCTGCCCAAAGTCTATACCGCGTGGTGGCCAGAGGACAGA
GCTTCAAGAAAACTATGCTGGCATCTCCATTTTCAGATTTGGCAGTTTGGACAGTGGGTGAACGTGGT
GGTAGATGACCGGCTGCCCAAAGAATGACAAGCTGGTGTGGTGCACCTCAACCGAACGCAGTGAGTTC
TGGAGTGCCTGTGGAGAAGGCGTATGCCAAGCTGAGTGGGTCTATGAAGCATTGTGAGGGGCGAGTA
CCATGGAGGGCCTTGAGGACTTCACAGGAGGCGTGGCCAGAGCTTCAACTCCAGAGGCCCCCTCAGAA
CCTGCTCAGGCTCCTTAGGAAGGCCGTGGAGCGATCCTCCCTCATGGGTTGCTCCATTGAAGTACCAGT
GATAGTGAAGTGAATCCATGACTGACAAGATGCTGGTGAAGGGCAGCCTTACTCTGTGACTGGCCTTC
AGGATGTCCACTACAGAGGCAAAATGGAACACTGATTCGGGTCCGGAATCCCTGGGGCCGGATTGAGTG
GAATGGAGCTTGGAGTGACAGTGCCAGGGAGTGGGAAGAGGTGGCCTCAGACATCCAGATGCAGCTGCTG
CACAAGACGGAGGACGGGAGTTCTGGATGTCTACCAAGATTTCTGAACAACCTCACGCTCCTGGAGA
TCTGCAACCTCACGCCTGATACACTCTCTGGGGACTCAAGAGCTACTGGCACACCACCTTACAGAGGG
CAGCTGGCGCAGAGGCGAGCTCCGACAGGGGCTGCAGGAACACCCTGGCAGTTCTGGACCAACCCCCAG
TTAAGATCTCTTCTGAGGGGGATGACCCAGAGGATGACGCAGAGGGCAATGTTGTGGTCTGCACCT
GCCTGGTGGCCCTAATGCAGAAGAACTGGCGCATGCACGGCAGCAGGGAGCCAGCTGCAGACCATTGG
CTTTGTCTCTACGCGTCCCAAAGAGTTTCAGAACATTCAGGATGTCCACTTGAAGAAGGAATCTTTC
ACGAAGTATCAGGACCACGGCTTCTCAGAGATCTTACCAACTCACGGGAGGTGAGCAGCCAACTCCGGC
TGCTCCGGGGGAATATATCATTATTCCTCCACCTTTGAGCCACACAGAGATGCTGACTTCTGCTTCG
GGTCTTCACCGAGAAGCACAGCGAGTCATGGGAATTGGATGAAGTCAACTATGCTGAGCAACTCCAAGAG
GAAAAGGTCTCTGAGGATGACATGGACCAGGACTTCTACATTTGTTAAGATAGTGGCAGGAGAGGGCA
AGGAGATAGGGGTGTATGAGCTCCAGAGGCTGCTCAACAGGATGGCCATCAAATTCAAAAGCTTCAAGAC
CAAGGGCTTTGGCCTGGATGCTTCCGCTGCATGATCAACCTCATGGATAAAGATGGCTCTGGCAAGCTG
GGGCTTCTAGAGTTCAAGATCCTGTGAAAAAACTCAAGAAATGGATGGACATCTTCAGAGAGTGTGACC
AGGACCATTACGGCACCTTGAATCCTATGAGATGCGCCTGGTTATTGAGAAAGCAGGCATCAAGCTGAA
CAACAAGGTAATGCAGGTCTGGTGGCCAGGTATGCAGATGATGACCTGATCATAGACTTTGACAGCTTC
ATCAGCTGTTTCTGAGGCTAAAGACCATGTTACATTTCTTAACCATGGACCCCAAGAATACTGGCC
ATATTTGCTTGAGCCTGGAACAGTGGCTGCAGATGACCATGTGGGA

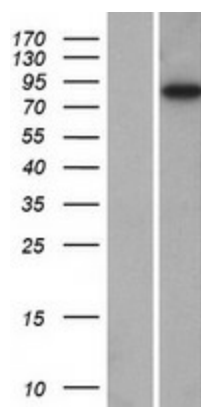
ACGCGTACGCGGCCGCTCGAGCAGAACTCATCTCAGAAGAGGATCTGGCAGCAAATGATATCCTGGATT
ACAAGGATGACGACGATAAGGTTTAA

Components:	The ORF clone is ion-exchange column purified and shipped in a 2D barcoded Matrix tube containing 10ug of transfection-ready, dried plasmid DNA (reconstitute with 100 ul of water).
Reconstitution Method:	<ol style="list-style-type: none"> 1. Centrifuge at 5,000xg for 5min. 2. Carefully open the tube and add 100ul of sterile water to dissolve the DNA. 3. Close the tube and incubate for 10 minutes at room temperature. 4. Briefly vortex the tube and then do a quick spin (less than 5000xg) to concentrate the liquid at the bottom. 5. Store the suspended plasmid at -20°C. The DNA is stable for at least one year from date of shipping when stored at -20°C.
RefSeq:	<u>NM_007058.4</u>
RefSeq ORF:	2220 bp
Locus ID:	11131
UniProt ID:	<u>Q9UMQ6</u>
Cytogenetics:	6p21.1
Protein Families:	Druggable Genome
MW:	84.2 kDa
Gene Summary:	Calpains constitute a family of intracellular calcium-dependent cysteine proteases. There are eight members in this superfamily. They consist of a variable 80 kDa subunit and an invariant 30 kDa subunit. This calpain protein appears to have protease activity and calcium-binding ability. A similar mouse protein may play a functional role in spermatogenesis and in the regulation of calcium-dependent signal transduction events during meiosis. [provided by RefSeq, Dec 2008]

Product images:



Circular map for RC229358



Western blot validation of overexpression lysate (Cat# [LY432372]) using anti-DDK antibody (Cat# [TA50011-100]). Left: Cell lysates from untransfected HEK293T cells; Right: Cell lysates from HEK293T cells transfected with RC229358 using transfection reagent MegaTran 2.0 (Cat# [TT210002]).