

Product datasheet for **RC229332**

CCDC114 (NM_144577) Human Tagged ORF Clone

Product data:

Product Type:	Expression Plasmids
Product Name:	CCDC114 (NM_144577) Human Tagged ORF Clone
Tag:	Myc-DDK
Symbol:	CCDC114
Synonyms:	CILD20
Mammalian Cell Selection:	Neomycin
Vector:	pCMV6-Entry (PS100001)
E. coli Selection:	Kanamycin (25 ug/mL)



[View online »](#)

ORF Nucleotide
Sequence:

>RC229332 representing NM_144577
Red=Cloning site Blue=ORF Green=Tags(s)

TTTTGTAATACGACTCACTATAGGGCGGCCGGAATTCGTCGACTGGATCCGGTACCGAGGAGATCTGCC
GCCCGCATCGCC

ATGGAAGGGGAGAGGGCGGCCTACAGCAAGGAAGTCCACCAGCGCATCAACAAGCAACTTGAGGAGATCC
GGCGCTTGAGGAGGTACGGGGCGATCTCCAGGTGCAGATCAGCGCAGCCAGAACCAGGTCAAGCGGCT
TCGGGACAGTCAGCGGCTGGAGAACATGGACCGCCTGCTGAAGGGCCGGGCCAGGTGCAGGCGGAGATC
GAGGAGCTGCAGGAGCAGACCAGGGCCCTGGACAAGCAGATCCAGGAGTGGGAGACGCGGATCTTTACCC
ACAGTAAGAATGTCAGGTCCCGGGATTTCCTGGATCAGAAGTCAAGATCAGGCGAAGGATCAGGAT
CCTAGAAAACAGTTGGACAGGGTCACCTGTCACTTTGACAACCAGTGGTACGGAATGCGGCCCTGCGG
GAGGAGCTGGATCTGCTGCGGATCGACAGGAACCGCTATCTGAACGTGGACCGCAAGCTGAAGAAGGAGA
TCCACCACCTGCATCACCTGGTCAGCACCTTATCCTCTCCTCCACCTCTGCCTACGCCGTGAGGGAGGA
GGCGAAGGCCAAGATGGGCTTGCTGCGGGAGCGCGGAGAAAGAGGAGGCCAGAGCGAGATGGAGGGCG
CAGGTCCTGCAGCGGCAGATCTGCACCTGGAGCAGCTGCACCACTTCTCAAGCTCAAGAAACAACGACC
GGCAGCCGGATCCCGATGTCCTGGAGAAGCGTGAAGAGCAGGCCGGGGAGGTGGCCGAGGGCGTCTGGAA
GACCTCCCAGGAGAGGCTGGTGCTTTGCTACGAGGACGCCCTGAATAAACTGTCCAGCTGATGGGGAG
AGTGACCTGACCTGTTGGTGCAGAAGTATCTGGAGATCGAGGAGCGCAACTTTGCTGAGTTCAACTTCA
TCAACGAGCAGAACTTGGAGCTGGAGCATGTGCAGGAAGAGATCAAGGAGATGCAGGAGGCTTTGGTGAG
CGCACGTGCCAGCAAGGATGACCAGCATTTGCTGCAGGAGCAGCAGCAGAAGGTGTTGCAGCAGCGCATG
GACAAGGTGCACTCGGAGGCTGAGCGCCTTGAGGCCCGCTTCCAGGATGTGCGGGGACAGCTGGAGAAGC
TCAAGGCTGATATCCAGCTCCTTTCACCAAGGCCCATTCGACAGCAGCATGATCGATGACCTCCTTGG
GGTCAAGACCAGCATGGGAGACCGGGACATGGGCCTTCTCTGAGCCTCATTGAGAAGCGGCTGGTGGAG
CTCCTGACAGTGCAGGCCTTCTACATGCCAGAGCTTCACTCCTGGCCGACGCTGCCCTCCTAGTGC
TGGGCCAGAGCCTGGAGGACCTCCGAAGAAGATGGCCCCACTTCAGCCCCCTGACACTCTAGAAGACCC
CCCGGTTTTGAGGCCAGCGATGACTACCCATGAGCAGGGAGGAGCTGCTGAGCCAAGTGGAGAAGCTG
GTGGAGCTCCAGGAGCAGGCGGAGGGCGCAGCGCCAGAAGGACCTGGCCGCCGCCCGCGAAGCTGGACG
GCACCCTGAGCGTGGACCTGGCCAGCACCCAGAGGGCCGGCTCCAGTACCGTCTGGTGGCCACCAGGCA
CCCCATGCCATCCCGGGTCCATTTTGGCCACAAGACTAGCAGAGACCGTGGCTCTCTGGCCACGTC
ACTTTTGGCGGCCTCAGCTCCAGCACTGGGCATTTGCCAGCCACATCACGCACGGTGACCCCAACTG
GCCACGTGACCTTCGGCTCCACCAGTGCCTCGAGTGGGGCCACGTGACCTTCAGACCCGTGAGCGCCAG
CAGCTACCTGGGCTCCACTGGATACGTGGGGTCCAGCAGGGGCGGAGAAAACACAGAGGGTGGTGTGGAG
AGCGGAGGCACAGCGTCTGATTCGAGCGGAGGCCTCGGGTCCAGCAGAGACCACGTCTCCAGCACCGGCC
CTGCCTCCAGCACTGGCCGGGCTCCTCCACCAGCAAAGACTCCCGGGGC

ACGCGTACGCGGGCCGCTCGAGCAGAACTCATCTCAGAAGAGGATCTGGCAGCAATGATATCCTGGATT
ACAAGGATGACGACGATAAGGTTTAA

Protein Sequence: >RC229332 representing NM_144577
 Red=Cloning site Green=Tags(s)

MEGERRAYSKEVHQIRINKQLEEIRRL EEEVRGDLQVQISAAQNQVKRLRDSQRLENMDRLLKGRAQVQAEI
 EELQEQTRALDKQIQEWETRIFTHSKNVRSPGFILDQKVKIRRRIRILENQLDRVTCHFQNLVRNAALR
 EELDLLRIDRNRYLNVDRKLLKKEIHHLHHLVSTLILSST SAYAVREEAKAKMGLLRERAEKEEAQSEMEA
 QVLQRQILHLEQLHHFLKLNNDRQPPDPVLEKREKQAGEVAEGVWKT SQERLVL CYEDALNKLSQLMGE
 SDPDLVQKYLEIEERNFAEFNINEQNLELEHVQEEIKEMQEALVSARASKDDQHLLQEQQQKVLQORM
 DKVHSEAEERLEARFQDVRGQLEKLLKADIQLLFTKAHCDSSMIDLLGVKTSMGDRMGLFLSLIEKRLVE
 LLTVQAFHLHAQSFTSLADAALLVLGQSL EDPKMAPLQPPDTLEDPPGFEASDDYPMSREELLSQVEKL
 VELQEQA EAQRQKDLAAAAAKLDGTL SVDLASTQRAGSSTVLPVTRHPHAI PGSILSHKTSRDRGSLGHV
 TFGGLSSSTGHLPSHITHGDPNTGHVTFGSTASSGGHVTFRPVSASSYL GSTGYVGSSRGGENTEGGVE
 SGGTASDSSGGLGSSRDHVSSTGPASSTGPSSTSKDSRG

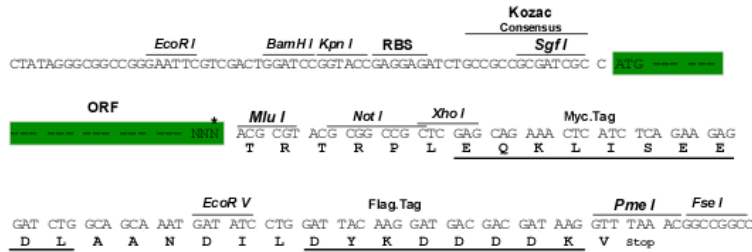
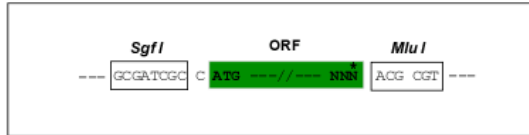
TRTRPLEQKLI SEEDLAANDILDYKDDDDKV

Chromatograms: https://cdn.origene.com/chromatograms/mk8072_c08.zip

Restriction Sites: SgfI-MluI

Cloning Scheme:

Cloning sites used for ORF Shuttling:



* The last codon before the Stop codon of the ORF

ACCN: NM_144577

ORF Size: 2010 bp

OTI Disclaimer: Due to the inherent nature of this plasmid, standard methods to replicate additional amounts of DNA in E. coli are highly likely to result in mutations and/or rearrangements. Therefore, OriGene does not guarantee the capability to replicate this plasmid DNA. Additional amounts of DNA can be purchased from OriGene with batch-specific, full-sequence verification at a reduced cost. Please contact our customer care team at custsupport@origene.com or by calling 301.340.3188 option 3 for pricing and delivery.

The molecular sequence of this clone aligns with the gene accession number as a point of reference only. However, individual transcript sequences of the same gene can differ through naturally occurring variations (e.g. polymorphisms), each with its own valid existence. This clone is substantially in agreement with the reference, but a complete review of all prevailing variants is recommended prior to use. [More info](#)

OTI Annotation: This clone was engineered to express the complete ORF with an expression tag. Expression varies depending on the nature of the gene.

Components: The ORF clone is ion-exchange column purified and shipped in a 2D barcoded Matrix tube containing 10ug of transfection-ready, dried plasmid DNA (reconstitute with 100 ul of water).

Reconstitution Method:

1. Centrifuge at 5,000xg for 5min.
2. Carefully open the tube and add 100ul of sterile water to dissolve the DNA.
3. Close the tube and incubate for 10 minutes at room temperature.
4. Briefly vortex the tube and then do a quick spin (less than 5000xg) to concentrate the liquid at the bottom.
5. Store the suspended plasmid at -20°C. The DNA is stable for at least one year from date of shipping when stored at -20°C.

RefSeq: [NM_144577.4](#)

RefSeq ORF: 2013 bp

Locus ID: 93233

UniProt ID: [Q96M63](#)

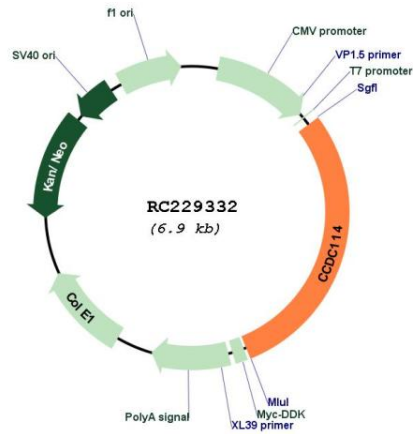
Cytogenetics: 19q13.33

Protein Families: Druggable Genome

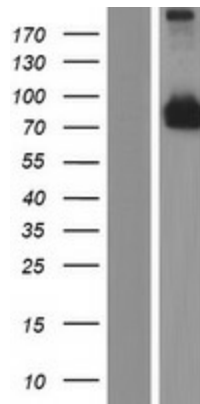
MW: 74.9 kDa

Gene Summary: This gene encodes a coiled-coil domain-containing protein that is a component of the outer dynein arm docking complex in cilia cells. Mutations in this gene may cause primary ciliary dyskinesia 20. [provided by RefSeq, May 2013]

Product images:



Circular map for RC229332



Western blot validation of overexpression lysate (Cat# [LY432347]) using anti-DDK antibody (Cat# [TA50011-100]). Left: Cell lysates from untransfected HEK293T cells; Right: Cell lysates from HEK293T cells transfected with RC229332 using transfection reagent MegaTran 2.0 (Cat# [TT210002]).