

Product datasheet for **RC229326**

FAM161A (NM_032180) Human Tagged ORF Clone

Product data:

Product Type:	Expression Plasmids
Product Name:	FAM161A (NM_032180) Human Tagged ORF Clone
Tag:	Myc-DDK
Symbol:	FAM161A
Synonyms:	RP28
Mammalian Cell Selection:	Neomycin
Vector:	pCMV6-Entry (PS100001)
E. coli Selection:	Kanamycin (25 ug/mL)



[View online »](#)

ORF Nucleotide
Sequence:

>RC229326 representing NM_032180
Red=Cloning site Blue=ORF Green=Tags(s)

TTTTGTAATACGACTCACTATAGGGCGGCCGGAATTCGTCGACTGGATCCGGTACCGAGGAGATCTGCC
GCCGCGATCGCC

ATGGCCACCTCCCACCGAGTGGCGAAGCTGGTGGCTCCAGTCTCCAGACCCCGTAAATCCCATCACTG
GAGCGCGGGTCGCCAGTACGAACGCGAAGACCCCTTAAAGGCCCTGGCGCAGCGGAGGCGATCTTGA
GGACGAAGAGGAGGAGAAAGTGGCGCAGCCGCTGGGCGATCGGCTGATTTGAACACCAGCTTTTCTGGG
GTGGATGAACATGCACCGATAAGCTATGAGGACTTTGTGAACTTCTCTGATATTCACCACTCTAATGAGG
AGTATTTCAAGAAAGTAGAAGAGTTGAAGGCTGCCACATAGAAACTATGGCAAATTAGAGAAAATGTA
CCAGGATAAATTACATTTAAAGGAAGTTCAGCCAGTGGTCATCAGAGAAGACTCTCTTAGTGACTCTTCC
AGATCTGTATCAGAAAAGAACTCTATCACCTGTCTCATTAAATGACATCATTTTCAGAGCCTGATTTAG
GCCAGTCTTCTCTTGTATGTGTCTCTCTGAAGAGGAGTTACCCAACCTAGAAAAAGAGTATCCTAG
GAAAAACAGAATGATGACCTATGCTAAGGAGCTCATCAACAATATGTGGACAGACTTTTGTGTTGAGGAT
TATATTCGCTGTAAGATACTGGCTCCATGCAGCTGAAAAAAGAAGGAAGAAAACGAAAAAGATGGGTGC
CCACAATTACAGTACCGAGCCTTTTCAAATGATGATAAGAGAACAAGAAAAAAGAAGAGTCCATGAA
ATCTAAATCAGATATCGAAATGGTACATAAAGCGCTCAAAAAACAAGAAGAGGATCCAGAGTATAAGAAG
AAATTCGAGCCAATCCAGTTCCTGCATCTGTCTTTCTCCCCCTTTACCATGATTTAGTCAAGCAAAAAG
AAGAACGGAGAAGGTCTCTGAAGGAGAAAAGCAAAAGAAGCTCTTTTGGCTCACAAAAGCCATTTAAATT
TATAGCAAGGGAGGAACAGAAGCGAGCAGCCCGGAAAAGCAGCTGAGAGACTTTCTTAAGTAAAAAAG
AAAACAAATCGATTTAAAGCCAGACCCATTCTCGATCTACTTATGGTTCACTACCAATGACAAGTTAA
AAGAAGAAGAGCTCTATCGAAACCTTAGGACACAGCTGAGAGCCAGGAGCATTTACAGAACTCATCTCC
TCTGCCTTGTAGTTCAGCTTGTGGATGCAGGAACCCAGGTGCTCTGAACAGGCTGTAAGTTGAAGTGT
AAACACAAGGTTAGTGGCCAACTCCTGATTTTGGAGACCTTCTGAGAGATACCAGAAACCTCTCAG
AACACAAGTCTCCAAAACCTTAAACAGTGTGTAACCATTGATCTTCATGCATCTCCACATGCATCTAT
TAAAAGAGAAAAATTTTGGCAGACATCGAAGCAGATGAAGAAAAATTTAAAAGAAACACGTTGGCCTTAT
TTGTCTCCAAGGCGTAAGTACCAGTAAGATGTGCAGGTGTAACCCTGTGCCTTGTAACTGCAACCCTC
CCGTGCCACGGTATCTCCAGAGGACGAGAACAAGCCGTAAGAAAGAGCGAAAAGGAAAGGATGAGAGA
ATACCAACGAGAAGTGAAGAAAGAGAAGAAAAATTTAAAAGAGGCCACTGCTATTTGAAAGAGTTGCT
CAGAAAAATGCAAGAATGGCAGCAGAAAAGCATTATTCTAATACCCTAAAAGCACTAGGAATATCTGATG
AGTTTGTTCAAAAGAAAGCCAAAGTGGAAAAGTACTTGAGTACTTCAACAATCAAGAGACGAAAAGTGT
CACTGAAGACAAAAGAAAGCTTTAATGAAGAAGAAAAATAGAAGAAGAGAGAATGGGGAAGAAAATTA
TTTATTGATACCAACAGCCAGGATTCTTACAAGGAAAAAGATGAAGCCAATGAGGAAAGTGAAGAAGAGA
AATCTGTTGAAGAATCACAC

ACGCGTACGCGGCCGCTCGAGCAGAACTCATCTCAGAAGAGGATCTGGCAGCAAATGATATCCTGGATT
ACAAGGATGACGACGATAAGGTTTAA

Protein Sequence: >RC229326 representing NM_032180
Red=Cloning site Green=Tags(s)

MATSHRVAKLVASSLQTPVNPITGARVAQYEREDPLKALAAEAILEDEEEEKVAQPAGASADLNTSFSG
VDEHAPISYEDFVNFDPDIHHSNEEYFKKVEELKAAHIETMAKLEKMYQDKLHLKEVQPVVIREDSLSDSS
RSVSEKNSYHPVSLMTSFSEPDLGQSSSLYVSSSEELPNLEKEYPRKNRMMTYAKELINNMWTFDVCED
YIRCKDTGFHAAEKRRKRKEWVPTITVPEPFQMMIREQKKKEESMKSKSDIEMVHKALKKQEEDPEYKK
KFRANPVPASVFLPLYHDLVKQKEERRSLKEKSKEALLASQKPFKFIAREEQKRAAREKQLRDFLKYYK
KTNRFKARPIPRSTYGSTTNDKLEEEELYRNLRTQLRAQEHQNSSPLPCRACGCRNPRCPEQAVKLKC
KHKVRCPDPDFEDLPERYQKHLSEHKSPKLLTVCKPFDLHASPHASIKREKILADIEADEENLKETRWPY
LSPRRKSPVRCAGVNPVPCNCNPPVPTVSSRGREQAVRKSEKERMREYQRELEEREKLLKRRPLLFERVA
QKNARMAAEKHYSNTLKGISDEFVSKKGQSGKVLEIFYFNQETKSVTEDKESFNEEEEIEERENGEENY
FIDTNSQDSYKEKDEANEESSEEEKSVEESH

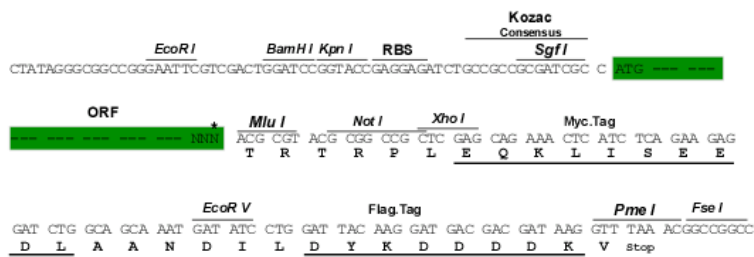
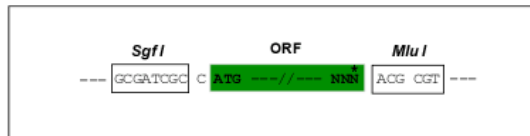
TRTRPLEQKLISEEDLAANDILDYKDDDDKV

Chromatograms: https://cdn.origene.com/chromatograms/mk8071_h07.zip

Restriction Sites: SgfI-MluI

Cloning Scheme:

Cloning sites used for ORF Shuttling:



* The last codon before the Stop codon of the ORF

ACCN: NM_032180

ORF Size: 1980 bp

OTI Disclaimer: The molecular sequence of this clone aligns with the gene accession number as a point of reference only. However, individual transcript sequences of the same gene can differ through naturally occurring variations (e.g. polymorphisms), each with its own valid existence. This clone is substantially in agreement with the reference, but a complete review of all prevailing variants is recommended prior to use. [More info](#)

OTI Annotation: This clone was engineered to express the complete ORF with an expression tag. Expression varies depending on the nature of the gene.

Components: The ORF clone is ion-exchange column purified and shipped in a 2D barcoded Matrix tube containing 10ug of transfection-ready, dried plasmid DNA (reconstitute with 100 ul of water).

Reconstitution Method:

1. Centrifuge at 5,000xg for 5min.
2. Carefully open the tube and add 100ul of sterile water to dissolve the DNA.
3. Close the tube and incubate for 10 minutes at room temperature.
4. Briefly vortex the tube and then do a quick spin (less than 5000xg) to concentrate the liquid at the bottom.
5. Store the suspended plasmid at -20°C. The DNA is stable for at least one year from date of shipping when stored at -20°C.

RefSeq: [NM_032180.2](#), [NP_115556.2](#)

RefSeq ORF: 1983 bp

Locus ID: 84140

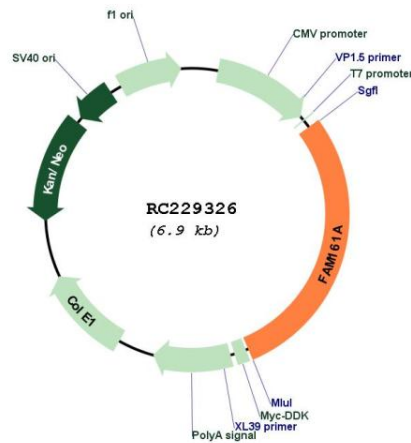
UniProt ID: [Q3B820](#)

Cytogenetics: 2p15

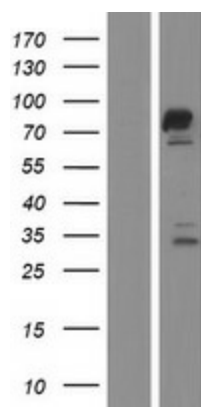
MW: 76.6 kDa

Gene Summary: This gene belongs to the FAM161 family. It is expressed mainly in the retina. Mouse studies suggested that this gene is involved in development of retinal progenitors during embryogenesis, and that its activity is restricted to mature photoreceptors after birth. Mutations in this gene cause autosomal recessive retinitis pigmentosa-28. Alternatively spliced transcript variants have been identified.[provided by RefSeq, Jan 2011]

Product images:



Circular map for RC229326



Western blot validation of overexpression lysate (Cat# [LY432341]) using anti-DDK antibody (Cat# [TA50011-100]). Left: Cell lysates from untransfected HEK293T cells; Right: Cell lysates from HEK293T cells transfected with RC229326 using transfection reagent MegaTran 2.0 (Cat# [TT210002]).