

Product datasheet for **RC229322**

SLC2A13 (NM_052885) Human Tagged ORF Clone

Product data:

Product Type:	Expression Plasmids
Product Name:	SLC2A13 (NM_052885) Human Tagged ORF Clone
Tag:	Myc-DDK
Symbol:	SLC2A13
Synonyms:	HMIT
Mammalian Cell Selection:	Neomycin
Vector:	pCMV6-Entry (PS100001)
E. coli Selection:	Kanamycin (25 ug/mL)



[View online »](#)

ORF Nucleotide
Sequence:

>RC229322 representing NM_052885
 Red=Cloning site Blue=ORF Green=Tags(s)

TTTTGTAATACGACTCACTATAGGGCGGCCGGGAATTCGTCGACTGGATCCGGTACCGAGGAGATCTGCC
 GCC**CGGATCGCC**

ATGTCCCGAAGCAAGCGAGAATGTGGAGTACACGCTGCGGAGCCTGAGCAGCCTGATGGCGAGCGGC
 GCAGGAAGCAGCCGGAGCCGGACGCGGCCGAGCGCGGCCGGGAGTGCAGCCTCCTGGCTGCCGCCGAATC
 GAGCACCAGCCTGCAGAGCGCGGGCGCGGGCGCGCGTCCGGGACCTGGAGCGCGCGCGCGCGG
 CAGTTCACAGCAGGACGAGACCCCGCCTTCGTGTACGTGGTGGCCGCTTCTCCGCGCTGGGCGGCTTCC
 TGTTTGGCTATGACACCGGGTGGTGTCAAGGGCCATGCTGCTCAAGCGCAGCTCAGTCTGGACGC
 GCTGTGGCAGGAGCTGCTGGTGTCCAGCACGGTGGGGCGGCTGCCGCTCGGCGCTGGCCGAGGCGCC
 CTAACGGCGTCTTCGGCCGCCGCTGCCATCCTCTGGCCAGTGCCCTTTCACCGCCGGCTCCGCGG
 TGCTGGCTGCGGCCAACAAAGGAGACTGCTCGCCGGCCGCTGGTGTGGGACTCGGCATCGGCAT
 TGCTTCTATGACAGTCCAGTGTACATTGCGGAGGTCTACCACCAATTTAAGAGGCCGATTAGTACC
 ATTAATACCTCTTCATCACAGGAGGGCAGTTCCTTGCAAGTGTGTGATGGAGCCTTCAGTTATCTCC
 AGAAGGATGGATGGAGGTACATGTTGGGACTTGCAGCAGTTCGGCGGTTATACAGTTTTTGGCTTCT
 CTTTTGCCTGAAAGCCCTCGATGGCTTATTAGAAAAGGACAGACTCAGAAGGCCCGTAGAATTTTATCT
 CAGATGCGTGGTAACAGACCATTGATGAGGAATATGATAGCATCAAAAACAACATTGAAGAGGAGGAAA
 AAGAGGTTGGCTCAGCTGGACCTGTGATCTGCAGAATGCTGAGTTATCCCCAACCGCCGAGCTTAAT
 TGTGGGTGTGGCCTACAAATGTTCCAGCAGCTCTCAGGCATTAACACCATCATGTAACAGTGAACCC
 ATTTCTGCAGATGCTGGTGTGAAGATGATAGACTTGAATATGGCTGGCTTACAGCCTTACAA
 ATTTTCAATTTTACACTTGTGGAGTCTGGCTTGTGAGAAGGTGGGCCGAGAAAGCTTACCTTTGGTAG
 TTTAGCAGGTACCACCGTAGCACTATTATTCTTGCCTTGGGATTTGTGCTATCAGCCCAAGTTTCCCCA
 CGCATCACTTTTAAGCCAATAGCTCCGTGAGGTGAGAACGCCACTTGCACAAGTACAGTTACTGTAATG
 AATGATGTTGGATCCAGACTGCGGTTTCTGCTACAAGATGAACAAATCAACTGTCATTGACTCCTCCTG
 TGTTCCAGTTAATAAAGCATCTACAAATGAGGCAGCCTGGGGCAGGTGTGAAAATGAAACCAAGTTCAA
 ACAGAAGATATATTTGGGCTTACAATTTCTGCCCTACTCCATACTCTGGACTGCACTTCTGGCCTTA
 TTTTATATCTTGTCTTTTGCACCTGGAATGGGACCAATGCCTTGGACTGTGAATTCTGAAATATATCC
 CCTTTGGCAAGAAGTACAGGAAATGCATGTTTCATCTGGAATAAACTGGATTTTCAATGCTCTGGTTTCA
 CTAACATTTTACACACAGCAGATATCTTACATACTATGGAGCTTTCTCCTCTATGCTGGATTTGCTG
 CTGTGGGACTCCTTTTCTATGGCTGTCTTCTGAGACCAAAGGCAAAAAATTAGAGGAAATTGAATC
 ACTCTTTGACAACAGGCTATGTACATGTGGCATTCTAGATTCTGATGAAGGGAGATATTTGAATATATT
 CGGGTAAGGGAAGTAACATATCATCTTTCTGACAAATGATGCTTCTGATGTGGAA

ACGCGTACGCGGCCGCTCGAGCAGAACTCATCTCAGAAGAGGATCTGGCAGCAATGATATCCTGGATT
 ACAAGGATGACGACGATAAGGTTTAA

Protein Sequence: >RC229322 representing NM_052885
 Red=Cloning site Green=Tags(s)

MSRKASENVEYTLRSLSSLMGERRRKQPEPDAASAAGECSLLAAAESSTSLQSAGAGGGVGDLEAARR
 QFQDETPAFVYVAVF SALGGFLFGYDTGVVSGAMLLLRQLSLDALWQELLVSSTVGA AVSALAGGA
 LNGVFGRRRAAILLASALFTAGSAVLAANNKETLLAGRLVVGLGIGIASMTVPVYIAEVSPNLRGLVT
 INTLFIITGGQFFASVVDGAF SYLQKDGWRYMLGLAAVPAVIQFFGFLFLPESRWLIQKGQTQKARRILS
 QMRGNQTI DEEYDSIKNNIEEEEKEVGSAGPVICRMLSYPTRRALIVGCGLQMFQQLSGINTIMYYSAT
 ILQMSGVEDDRLAIWLASVTAFTNFIFTLVGVWLVEKVGRRKLTFGSLAGTTVALIILALGFVLSAQVSP
 RITFKPIAPSGQNATCTRYSYCNECMLDPDCGFCYKMNKSTVIDSSCVPVNKASTNEAAWGCENETKFK
 TEDIFWAYNFCPTPYSWTALLGLILYL VFFAPGMGMPWTVNSEIYPLWARSTGNACSSGINWIFNVLVS
 LTF LHAEYLTYGAFFLYAGFAAVGLLF IYGCLPETKGKLEEIESLFDNRLCTCGTSDSDEGRYIEYI
 RVKGSNYHLSNDNASDVE

TRTRPLEQKLISEEDLAANDILDYKDDDDKV

Chromatograms: https://cdn.origene.com/chromatograms/mg3474_e06.zip

Restriction Sites: SgfI-MluI

Cloning Scheme:



ACCN: NM_052885

ORF Size: 1944 bp

OTI Disclaimer: The molecular sequence of this clone aligns with the gene accession number as a point of reference only. However, individual transcript sequences of the same gene can differ through naturally occurring variations (e.g. polymorphisms), each with its own valid existence. This clone is substantially in agreement with the reference, but a complete review of all prevailing variants is recommended prior to use. [More info](#)

OTI Annotation: This clone was engineered to express the complete ORF with an expression tag. Expression varies depending on the nature of the gene.

Components: The ORF clone is ion-exchange column purified and shipped in a 2D barcoded Matrix tube containing 10ug of transfection-ready, dried plasmid DNA (reconstitute with 100 ul of water).

Reconstitution Method:

1. Centrifuge at 5,000xg for 5min.
2. Carefully open the tube and add 100ul of sterile water to dissolve the DNA.
3. Close the tube and incubate for 10 minutes at room temperature.
4. Briefly vortex the tube and then do a quick spin (less than 5000xg) to concentrate the liquid at the bottom.
5. Store the suspended plasmid at -20°C. The DNA is stable for at least one year from date of shipping when stored at -20°C.

RefSeq: [NM_052885.4](#)

RefSeq ORF: 1947 bp

Locus ID: 114134

UniProt ID: [Q96QE2](#)

Cytogenetics: 12q12

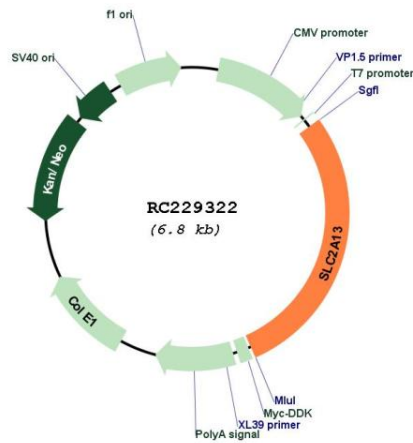
Domains: sugar_tr

Protein Families: Transmembrane

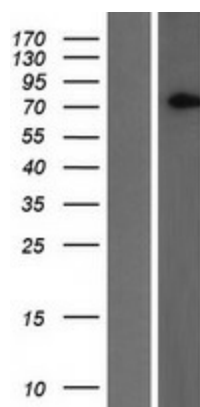
MW: 70.2 kDa

Gene Summary: H(+)-myo-inositol cotransporter (PubMed:11500374). Can also transport related stereoisomers (PubMed:11500374).[UniProtKB/Swiss-Prot Function]

Product images:



Circular map for RC229322



Western blot validation of overexpression lysate (Cat# [LY432337]) using anti-DDK antibody (Cat# [TA50011-100]). Left: Cell lysates from untransfected HEK293T cells; Right: Cell lysates from HEK293T cells transfected with RC229322 using transfection reagent MegaTran 2.0 (Cat# [TT210002]).