

Product datasheet for **RC229312**

Grainyhead like protein 1 homolog (GRHL1) (NM_198182) Human Tagged ORF Clone

Product data:

Product Type:	Expression Plasmids
Product Name:	Grainyhead like protein 1 homolog (GRHL1) (NM_198182) Human Tagged ORF Clone
Tag:	Myc-DDK
Symbol:	Grainyhead like protein 1 homolog
Synonyms:	LBP32; MGR; NH32; TFPC2L2
Mammalian Cell Selection:	Neomycin
Vector:	pCMV6-Entry (PS100001)
E. coli Selection:	Kanamycin (25 ug/mL)



[View online »](#)

ORF Nucleotide Sequence:

>RC229312 ORF sequence
 Red=Cloning site Blue=ORF Green=Tags(s)

TTTTGTAATACGACTCACTATAGGGCGGCCGGGAATTCGTCGACTGGATCCGGTACCGAGGAGATCTGCC
 GCC**CGCATCGCC**

ATGACACAGGAGTACGACAACAAACGGCCAGTGTGGTTCTTCAGAATGAAGCACTTTATCCACAGCGGC
 GGTCTACACTAGTGAGGATGAGGCCTGGAAATCCTTCCTGGAAAACCTCTCACTGCAGCGACCAAAGC
 GATGATGAGCATCAATGGAGATGAAGACAGCGCCGCTGCCTGGCCCTGCTCTATGACTACTACAAGTT
 CCAAGAGAGAGAAGGTCAACAGCAAAGCCAGAGGTGGAGCACCTGAGCCAGATCACAGCAAAAAGAA
 ACAGCATACCAATTGTGACAGAGCAGCCCTCATCTCTGCTGGAGAAAACAGAGTCAAGTACTGAAAA
 TGTGCCATTTAACATTGCTTCCCATGGCAACCAGCTGGGCATTGATAAGAGAGGCCATCTGACAGCT
 CCAGATACGACAGTCACTGTCTCCATAGCAACGATGCCTACCCACTCCATCAAGACAGAAACCCAGCCAC
 ATGGCTTCGCTGTGGAAATCCCCCAGCAGTGTATCATCTGAGCCCACTGAGCGGGTGGTGGTTTTCGA
 TCGGAATCTCAACTGACCAGTTCAGCTCTGGTCTCAAGCCCCAAATGCTCAAAGGCGAACTCCAGAC
 TCGACCTTCTCAGAGACCTCAAGGAAGCGTTCAGGAGTTTTCTTCCCTCGGATCTCAGTCTGCGGA
 TGCTGGCATGAATTCAGAGGACTATGTTTTGACAGTGTCTGGGAACAACCTTGAATATACCCTAGA
 AGCTTCAAATCACTTCGACAGAAGCCAGGAGACAGTACCATGACGTACCTGAACAAAGGCCAGTTCTAT
 CCCATCACCTGAAGGAGGTGAGCAGCAGTGAAGGAATCCATCATCCCATCAGCAAAGTTCGAAGTGTGA
 TCATGGTGGTTTTGCTGAAGACAAAAGCAGAGAAGATCAGTTAAGGCATTGGAAGTACTGGCACTCCCG
 GCAGCACACCGCTAAACAAAGATGCATTGACATAGCTGACTATAAAGAAAGCTTCAACACTATCAGTAAC
 GTCGAGGAGATTGCGTATAACGCCATTTCTTCCATGGGACATCAACGATGAAGCAAAGTTTTTCATCT
 CTGTGAAGTCTTAAGCACAGATTTCTCTTCCCAGAAGGAGTGAAGGGTTCCTTTAACATTTCAAAT
 TGATACCTATAGTTACAACAACCGCAGCAACAAGCCTGTGCACCGGGCTACTGCCAGATCAAGGCTTC
 TGTGACAAGGAGCTGAGCGGAAAATCAGGGATGAAGAACGAAAGCAAAGCAAAGAAAAGTTTTCTGATG
 TAAAGTGCCACTGCTTCCCTCTCACAAGCAATGGATATCACAGTTTTCAAACCCTTATTGATCTCGA
 TACTCAGCCTGCTCTTCTTCTGACGTGCACTTTGCCAAGTGCAGCGGGGCACTCATGCTCTCC
 ATTGCTCTGAAGAATTGGAGGGTGAAGGCTCTGTCTTAAAAGGGGGCCGTACGGCACAGAAGTACT
 TTGCTGCTCCCTCTACCAAGCTGGCCGGATAGAAGAACAAAGAGAGTGTCTACGTTTCGAAA
 GGAGTCAGAAGAAGCTTTGATGCCCTGATGCTCAAACCCCATCTTTGAAGGGCTGATGAAGCTATC
 TCAGACAAATACGATGTTCCCATGACAAGATTGGGAAAATATCAAGAAGTGTAAAAGGGGATCTGG
 TGAACATGGACGACAACATTGTGAAGCATTACTCCAATGAGGACACCTCCAGCTGCAGATTGAAGAAGC
 CGGGGGTCTTACAAGCTCACCTGACGGAGATC

ACGCGTACGCGGCCGCTCGAGCAGAAACTCATCTCAGAAGAGGATCTGGCAGCAAATGATATCCTGGATT
 ACAAGGATGACGACGATAAGGTTTAA

Protein Sequence:

>RC229312 protein sequence
 Red=Cloning site Green=Tags(s)

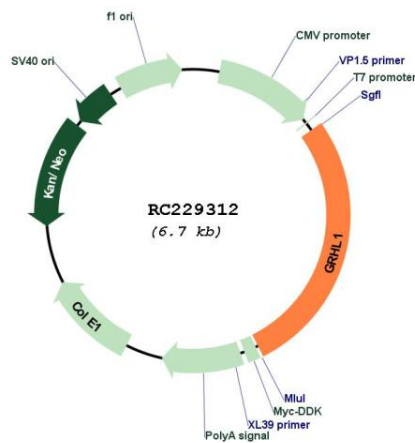
MTQEYDNKRPLV LQNEALYPQRRSYTSEDEAWKSFLNPLTAATKAMMSINGDEDSAAALGLLYDYKVP
 PRERRSSTAKPEVEHPEPDHRSKNSIPIVTEQPLISAGENRVQLKNVPFNIVLPHGNQLGIDKRGHLTA
 PDDTTVTSIATMPTHSIKTETQPHGFAVGIPPAVYHPEPTERVVVFDRNLNTDQFSSGAQAPNAQRRTPD
 STFSETFKEGVQEVFFPSDLRLMPGMNSEDYVFDVSVGNNFYTL EASKSLRQKPGDSTMTYLNKGQFY
 PITLKEVSSSEGIHHPISKVRSVIMVVF AEDKSREDQLRHWKYWHSRQHTAKQRCIDIADYKESFNTISN
 VEEIAYNAISFTWDINDEAKVFI SVNCLSTDFSSQKGVKGLPLNIQIDTYSYNNRSNKPVHRAYCQIKVF
 CDKGAERKIRDEERKQSKRKVSDVKVPLLP SHKRM DITVFKPFIDLDTPVLFIPDVHFNALQRGTHVLP
 IASEELEGEVSVLKRGPYGTEDDFAVPPSTKLARIEEPKRVLLYVRKESEEVFDALMLKTPSLKGLMEAI
 SDKYDVP HDKIGKIFKKCKGILVMDDNIVKHYSNEDTFQLQIEEAGGSYKLTLEI

TRTRPLEQKLISEEDLAANDILDYKDDDDKV

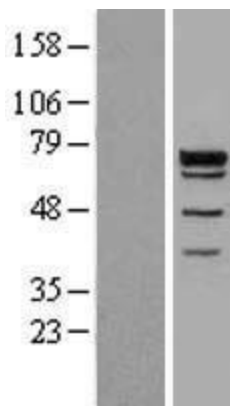
Locus ID: 29841
UniProt ID: [Q9NZI5](#)
Cytogenetics: 2p25.1
Protein Families: Transcription Factors, Transmembrane
MW: 70.1 kDa

Gene Summary: This gene encodes a member of the grainyhead family of transcription factors. The encoded protein can exist as a homodimer or can form heterodimers with sister-of-mammalian grainyhead or brother-of-mammalian grainyhead. This protein functions as a transcription factor during development. [provided by RefSeq, Jun 2009]

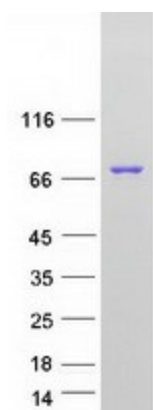
Product images:



Circular map for RC229312



Western blot validation of overexpression lysate (Cat# [LY432329]) using anti-DDK antibody (Cat# [TA50011-100]). Left: Cell lysates from untransfected HEK293T cells; Right: Cell lysates from HEK293T cells transfected with RC229312 using transfection reagent MegaTran 2.0 (Cat# [TT210002]).



Coomassie blue staining of purified GRHL1 protein (Cat# [TP329312]). The protein was produced from HEK293T cells transfected with GRHL1 cDNA clone (Cat# RC229312) using MegaTran 2.0 (Cat# [TT210002]).