

Product datasheet for **RC229311**

FBXO24 (NM_012172) Human Tagged ORF Clone

Product data:

Product Type:	Expression Plasmids
Product Name:	FBXO24 (NM_012172) Human Tagged ORF Clone
Tag:	Myc-DDK
Symbol:	FBXO24
Synonyms:	FBX24
Mammalian Cell Selection:	Neomycin
Vector:	pCMV6-Entry (PS100001)
E. coli Selection:	Kanamycin (25 ug/mL)



[View online »](#)

ORF Nucleotide Sequence:

>RC229311 representing NM_012172
 Red=Cloning site Blue=ORF Green=Tags(s)

TTTTGTAATACGACTCACTATAGGGCGGCCGGAATTCGTCGACTGGATCCGGTACCGAGGAGATCTGCC
 GCC**CGCATCGCC**

ATGGTGTGGGAAAGCCAGCAGGAACGGGGGGCCAAGGGCCTAGGAGACAGGAGGCAGGAGCAGGGAGG
 GGGCAATCAGGATGGTCAGGGGAAGCCAGAGACGGAAAGCTGCAAAAATTCACCAGGCTGTGTGGACGGGA
 GGAGGGGCTCCGGGTGAAGAGAAGCTGCCCTTCTGTGGCTCGGAGCTTGGGGTTGAAGAGAAGAGGGGG
 AAAGAAATCCGATTTCCATCCAGTTGTTCCCCCAGAGCTGGTGGAGCATATCATCTCATTCTCCACAG
 TCAGAGACCTTGTGCCCTCGGCCAGACCTGCCGCTACTCCACGAAGTGTGCGATGGGAAGGCGTGTG
 GAGACGCATCTGTCGAGACTCAGTCCGCGCTCCAAGATCAGGGTCTGGAGTCCGGCCCTGGAAGAGA
 GCTGCCATTCTGAACTACACGAAGGGCCTGTATTTCCAGGCATTTGGAGGCCGCCCGATGTCTCAGCA
 AGAGCGTGGCCCCCTTGCTAGCCCACGGCTACCGCGCTTCTTGCCACCAAGGATCACGTCTTCATTCT
 TGACTACGTGGGACCCTTTCTTCTCAAAAATGCCCTGGTCTCCACCCTCGGCCAGATGCAGTGAAG
 CGGGCCTGTCGCTATGTTGTGTTGTGTCGTGGAGCCAAGGATTTGCCTCGGACCAAGGTGTGACACAG
 TTTACCGTAAATACCTCTACGTCTTGCCACTCGGGAGCCGACAGGAAGTGGTGGGTACCACCAGCAGCCG
 GGCTGTGACTGTGTTGAGGTCTATCTGCACTAGTGGGAGCGGGTCTCAAGATGACATTCACCAC
 TCAATGACCTTCAAGCAGATCGTCTGGTGGTTCAGGAGACCCAGCGGGCTACTGCTCCTCACAGAGG
 AAGGAAAGATCTACTCTTTGGTAGTGAATGAGACCCAGCTTGACCAGCCACGCTCCTACACGGTTACGT
 GGCCCTGAGGAAGGTGTCCACTACCTGCCTCACCTGCGGTGGCTGCATGACTTCCAACCAGAGCAGC
 ACCCTCTACGTCACAGACCAGGGGGAGTGTATTTGAGGTGCATACCCAGGGGTGTATCGCGATCTCT
 TTGGGACCCTTCAAGCCTTTGACCCCTGGACCAGCAGATGCCGCTTGTCTCTCACTGCCAAGAT
 CCTATTCTGTGCTCTTGGCTACAACCACCTTGGCCTGGTGGATGAATTTGGCCGAATCTTCATGCAAGGA
 AATAACAGATACGGCAGCTAGGAACAGGGGACAAAATGGACCGAGGGGAACCCACACAGGTTTGTACC
 TGCAGCGGCCATCACCTGTGGTGCAGCCTCAACCCTCCCTGGTGTGAGCCAGAGCTCAGAGTTCAG
 CAAGGAGCTGCTGGGCTGCGGCTGTGGGCTGGGGCCGCTCCAGGCTGGCCAAAGGGGAGTGCCTCC
 TTCGTCAGCTCCAAGTCAAGTCCCTCTGTGTGCTGTGCCCTGTGCCACCAGGGAGTGCCTATACA
 TCCTGTCCAGCCACGACATTGAGCAGCACGCCCTATCGCCACCTGCCAGCCAGAGGGTGGTGGGGAC
 TCCTGAGCCAGCCTGGGGCCAGAGCACCCAGACCCGGGGGATGGCCAGGCTGCGAGGAGTAC
 CTAGCCAGATCCACAGTTGCCAAAGTTCAGGACCCGACGGAGAAGATGAAGGAGATCGTAGGGTGA
 TGCCCTGATGGCCGACAGAAGGACTTCTTCTGGGAGGCCCTGGACATGCTGCAGAGGGCTGAAGGAGG
 CGGGGGTGGTGTAGGGCCCCAGCCCCTGAGACC

ACGCGTACGCGGCCGCTCGAGCAGAACTCATCTCAGAAGAGGATCTGGCAGCAAATGATATCCTGGATT
 ACAAGGATGACGACGATAAGGTTTAA

Protein Sequence:

>RC229311 representing NM_012172
 Red=Cloning site Green=Tags(s)

MVWESQERGGQGPRRQEGRSREGAIRMVRSQRRLQKFRRLCGREEGLRVKRSRSCGSELGVEEKRG
 KGNPISIQLPPELVEHIIISFLPVRDLVALGQTCRYFHEVCDGEGVWRRICRRLSPRLQDQSGVWPWR
 AAILNYTKGLYFQAFGGRRRCLSKSVAPLLAHGYRRFLPTKDHVFIIDYVGTFLFLKNALVSTLGMQWK
 RACRYVVLCRGAKDFASDPRCDTVYRKLYVVLATREPQEVVGTSSRACDCVEVYLQSSQRVFKMTFHH
 SMTFKQIVLVGQETQRALLLLEEGKIYSLVNETQLDQPRSYTVQLALRKVSHYLPRLVACMTSNQSS
 TLYVTDQGGVYFVHTPGVYRDLFGTLQAFDPLDQOMPLALSLPAKILFCALGYNHGLVDEFGRIFMQG
 NNRYGQLGTGDKMDRGEPTQVCYLQRPITLWCGLNHSVLVLSQSSEFSKELLGCGCGAGGRLPGWPKGSAS
 FVKLQVKVPLCACALCATRECLYILSSHDIHQHAPYRHLPASRVVGTPEPSLGARAPQDPGMAQACEEY
 LSQIHSCQTLQDRTEKMKIEIVGWMLMAAQKDFWEALDMLQRAEGGGGGVPPAPET

TRTRPLEQKLISEEDLAANDILDYKDDDDKV

Chromatograms: https://cdn.origene.com/chromatograms/mk8035_c12.zip

Restriction Sites: SgfI-MluI

Cloning Scheme:



ACCN: NM_012172

ORF Size: 1854 bp

OTI Disclaimer: The molecular sequence of this clone aligns with the gene accession number as a point of reference only. However, individual transcript sequences of the same gene can differ through naturally occurring variations (e.g. polymorphisms), each with its own valid existence. This clone is substantially in agreement with the reference, but a complete review of all prevailing variants is recommended prior to use. [More info](#)

OTI Annotation: This clone was engineered to express the complete ORF with an expression tag. Expression varies depending on the nature of the gene.

Components: The ORF clone is ion-exchange column purified and shipped in a 2D barcoded Matrix tube containing 10ug of transfection-ready, dried plasmid DNA (reconstitute with 100 ul of water).

Reconstitution Method:

1. Centrifuge at 5,000xg for 5min.
2. Carefully open the tube and add 100ul of sterile water to dissolve the DNA.
3. Close the tube and incubate for 10 minutes at room temperature.
4. Briefly vortex the tube and then do a quick spin (less than 5000xg) to concentrate the liquid at the bottom.
5. Store the suspended plasmid at -20°C. The DNA is stable for at least one year from date of shipping when stored at -20°C.

RefSeq: [NM_012172.5](#)

RefSeq ORF: 1857 bp

Locus ID: 26261

UniProt ID: [O75426](#)

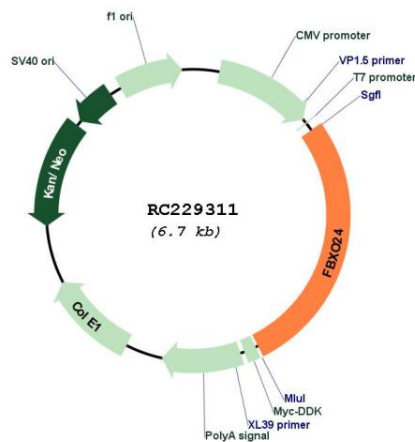
Cytogenetics: 7q22.1

Protein Families: Druggable Genome

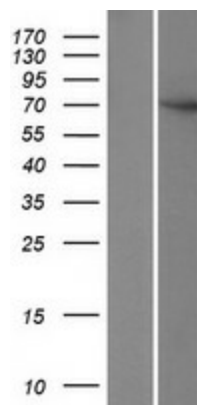
MW: 69.2 kDa

Gene Summary: This gene encodes a member of the F-box protein family which is characterized by an approximately 40 amino acid motif, the F-box. The F-box proteins constitute one of the four subunits of the ubiquitin protein ligase complex called SCFs (SKP1-cullin-F-box), which function in phosphorylation-dependent ubiquitination. The F-box proteins are divided into 3 classes: Fbws containing WD-40 domains, Fbls containing leucine-rich repeats, and Fbxs containing either different protein-protein interaction modules or no recognizable motifs. The protein encoded by this gene belongs to the Fbxs class. Multiple transcript variants encoding different isoforms have been found for this gene. [provided by RefSeq, Jul 2009]

Product images:



Circular map for RC229311



Western blot validation of overexpression lysate (Cat# [LY432328]) using anti-DDK antibody (Cat# [TA50011-100]). Left: Cell lysates from untransfected HEK293T cells; Right: Cell lysates from HEK293T cells transfected with RC229311 using transfection reagent MegaTran 2.0 (Cat# [TT210002]).