

Product datasheet for **RC229308**

GOLGA8B (NM_001023567) Human Tagged ORF Clone

Product data:

Product Type:	Expression Plasmids
Product Name:	GOLGA8B (NM_001023567) Human Tagged ORF Clone
Tag:	Myc-DDK
Symbol:	GOLGA8B
Synonyms:	GOLGA5
Mammalian Cell Selection:	Neomycin
Vector:	pCMV6-Entry (PS100001)
E. coli Selection:	Kanamycin (25 ug/mL)



[View online »](#)

ORF Nucleotide Sequence:

>RC229308 representing NM_001023567
 Red=Cloning site Blue=ORF Green=Tags(s)

TTTTGTAATACGACTCACTATAGGGCGGCCGGAATTCGTCGACTGGATCCGGTACCGAGGAGATCTGCC
 GCC**CGCATCGCC**

ATGGCAGAAGAACTGGACAGAGTAAATTAGTCGAGCCAAGAAAAAGTTCAAAGAATATTGGCAGAGAA
 ACCGCCCTGGTGTTCAGCAGCAGCGAAGAGGAACACGAAAGCAAATGGCAGTAGCCCTGAGACGGCCGC
 TTCTGGTGGTTGCCACTCATCTGAGGCTTCTCTCCGCCCTCTCTCTGTCATGCGCGTCAGAGCCCG
 TGCCAAGAACAAGCAGCAGTCTGAACCTGAGGTCATAAAAAATCAGTCGACTGAATGACACCATCAAAT
 CTTTGAACAACAAGAAGAAACAAGTGAACATCAGCTGGAAGAAGAAAAGAAAGCAAACAATGAGAAACA
 GAAAGCTGAAAGGGAGCTAGAGGGTCAAATCCAGAGATTGAACACAGAGAAAAAGAACTAAATACGGAC
 CTGTATCATATGAACATTCTCTCAGATACTTTGAAGAAGAGTCCAAGGATCTGGCCGGCCGCTGCAAC
 GTTCATCGCAGCGTATAGGAGAGTTAGAGTGGTCTCTCTGTGCTGTCGCCGCCACACAGAAGAAGAGCC
 GGATGGGTTCTCGAGCCGAGTAAAGCACTTCTCAAGCGCAGTTAGAGCAGTCCATACGGGAGCAGATA
 CTGCTGAAAGGACACGTGACACAGTTGAAGGAGTCGCTTAAAGAAGTCCAGCTGGAGAGAGATCAATATG
 CTGAACAAATAAAAGGAGAGAGGGCCAGTGGCAGCAGAGGATGAGGAAAATGTCGACAGGAGTTTGCAC
 ATTTGAAGGAGGAGAAGAAGCATGATACGCATCGGGTAGAGGAGCTGGAGAGGAGCTTGTCCAGACTCAA
 AACCAGATGGCTGAGCCACTGCCCCCGGATGCCCCAGCAGTGTCTCTGAGGTGGAGCTGCAAGACCTGA
 GGAAGGAGCTGGAGAGAGTGGCAGGAGAGCTCCAGGCTCAGGTGGAACAATCAGTGCATCAGTCTCT
 GAACCGTGGGCAAAGGAGAGGCTTCCGAGCAGGAGGAGGCTTCCAGGAGCAGCAGGAGAGGCTTCGG
 GAACGGGAGAAGAGGCTTCCAGCAGTGGCCGAGCCACAGAGCGACTTGGAGGAGCTGAAGCAGGAGAACA
 AGAGCGCACTGCAGTTGGAGCAGCAAGTAAAGGAGCTGCAGGAGAAGCTGGGCCAGGTGATGGAGACGCT
 CACCTCGGCCGAGAAGGAGCCAGAGGCAGCAGTCCAGCCTCAGGACTGGGGGGAGTCTAGCGGCCCTT
 ATGGACCTCTGGAGGAGAAGGCGACCTGAGGGAGCATGTGGAGAACTGGAACCTGGATTATCCAGT
 ACCGGAGAGAGATGCCATCAGAAAGTACATCGCCTTCTAACAGAGCCAGGGGACAGTGCCAAAGATGC
 GTCACCGGGAGGAGGCCATCATCAGGCTGGCCAGGACAAGGAGGAGGGAAGGTGAAGCTGCTGGAGCT
 GCAGGAGATGGTGTTCGGCTTGTGGCAGCTACAGCGAGGGGCACGGCAAATCTGGCCGCTGCCCGGA
 ACCCTGCTGTGAACCCAGTCCAGGAGCCCGAGCCCGGAGCTCGGGGCTGCCGACAAGCATGGTGA
 TCTTTGTGAGGCGAGCCTCACCAACAGCGTGGAGCCTGCACAAGGAGAAGCCAGGAGGGTTCTTCCAG
 GACAACCTACTGCACAGCCAGTCTGCAGCTCCTTGGTGAATGCAGGACCACCAGGAGCACCAGGCT
 TGGGCAGCAACTGCTGTGTGCCATGCTTTTGTGGGCTTGGCTGCCGAGAAGAAGGAGA

ACGCGTACGCGGCCGCTCGAGCAGAACTCATCTCAGAAGAGGATCTGGCAGCAAATGATATCCTGGATT
 ACAAGGATGACGACGATAAGGTTTAA

Protein Sequence:

>RC229308 representing NM_001023567
 Red=Cloning site Green=Tags(s)

MAEETGQSKLAAAKKFKKEYWQRNRPVPAAAKRNTKANGSSPETAASGGCHSSEASSSASSSLHARQSP
 CQEQAAVLNSRSIKISRLNDTIKSLKQKQVEHQLLEEKKANNEKQKAERELEGQIQLNTEKKKLNTD
 LYHMKHSLRYFEEESKDLAQRSSQRIGELEWSLCAVAATQKKKPDGFSRSKALLKRQLEQSIREQI
 LLKGHVTQLKESLKEVQLERDQYAEQIKGERAQWQQRMRKMSQEVCTLKEEKKHDTHRVEELERSLRLK
 NQMAEPLPPDAPVSSEVELQDLRKELERVAGELQAQVENNQCSLLNRGQKERLREQEERLQEQQERLR
 EREKRLQQLAEPQSDLEELKHENK SALQLEQQVKELQEKLQVMTL TSAEKEPEAAVPASGTGGESSGL
 MDLLEEKADLREHVEKLELGF IQYRRERCHQKVHRLLETPGDSAKDASPGGGHHQAGPGQGEEGAAGA
 AGDGVAACGSYSEGHGFLAAARNPAAEPSGAPAPQELGAADKHGDLCEASLTNSVPAQGEAREGSSQ
 DNPTAQVPLQLLGEMQDHQHPGLGSNCCVPCFWAWLPRRRR

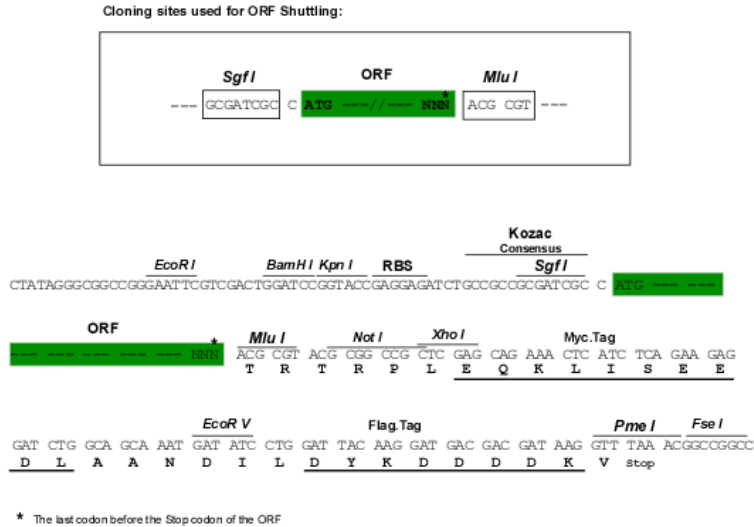
TRTRPLEQKLISEEDLAANDILDYKDDDDKV

Chromatograms:

https://cdn.origene.com/chromatograms/mk8035_d02.zip

Restriction Sites: SgfI-MluI

Cloning Scheme:



ACCN: NM_001023567

ORF Size: 1809 bp

OTI Disclaimer: The molecular sequence of this clone aligns with the gene accession number as a point of reference only. However, individual transcript sequences of the same gene can differ through naturally occurring variations (e.g. polymorphisms), each with its own valid existence. This clone is substantially in agreement with the reference, but a complete review of all prevailing variants is recommended prior to use. [More info](#)

OTI Annotation: This clone was engineered to express the complete ORF with an expression tag. Expression varies depending on the nature of the gene.

Components: The ORF clone is ion-exchange column purified and shipped in a 2D barcoded Matrix tube containing 10ug of transfection-ready, dried plasmid DNA (reconstitute with 100 ul of water).

Reconstitution Method:

1. Centrifuge at 5,000xg for 5min.
2. Carefully open the tube and add 100ul of sterile water to dissolve the DNA.
3. Close the tube and incubate for 10 minutes at room temperature.
4. Briefly vortex the tube and then do a quick spin (less than 5000xg) to concentrate the liquid at the bottom.
5. Store the suspended plasmid at -20°C. The DNA is stable for at least one year from date of shipping when stored at -20°C.

RefSeq: [NM_001023567.5](#)

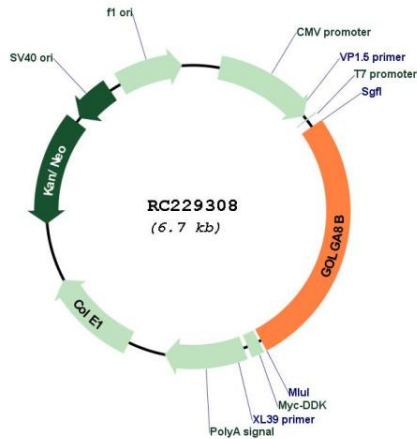
RefSeq ORF: 1812 bp

Locus ID: 440270

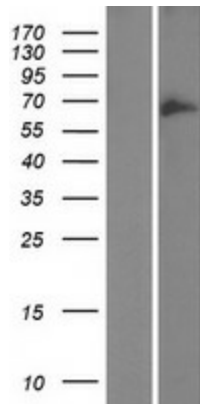
UniProt ID: [A8MQT2](#)

Cytogenetics: 15q14
MW: 67.1 kDa
Gene Summary: May be involved in maintaining Golgi structure.[UniProtKB/Swiss-Prot Function]

Product images:



Circular map for RC229308



Western blot validation of overexpression lysate (Cat# [LY432325]) using anti-DDK antibody (Cat# [TA50011-100]). Left: Cell lysates from untransfected HEK293T cells; Right: Cell lysates from HEK293T cells transfected with RC229308 using transfection reagent MegaTran 2.0 (Cat# [TT210002]).