

## Product datasheet for **RC229306**

### **KBTBD8 (NM\_032505) Human Tagged ORF Clone**

#### **Product data:**

Product Type:	Expression Plasmids
Product Name:	KBTBD8 (NM_032505) Human Tagged ORF Clone
Tag:	Myc-DDK
Symbol:	KBTBD8
Synonyms:	TA-KRP; TAKRP
Mammalian Cell Selection:	Neomycin
Vector:	pCMV6-Entry (PS100001)
E. coli Selection:	Kanamycin (25 ug/mL)



[View online »](#)

**ORF Nucleotide Sequence:**

>RC229306 representing NM\_032505  
 Red=Cloning site Blue=ORF Green=Tags(s)

TTTTGTAATACGACTCACTATAGGGCGGCCGGGAATTCGTCGACTGGATCCGGTACCGAGGAGATCTGCC  
 GCC**CGCATCGCC**

ATGGCCGCGTCGGCAGATTTAAGTAAGTCTTCCCCAACACCGAATGGGATTCCATCTTCAGACCCAGCCA  
 GCGATGCCATGGACCCCTTCCATGCTTGCAGTATTCTTAAGCAACTCAAAACAATGTACGATGAAGGACA  
 GTTGACAGACATTGTAGTGGAAGTGATCAGGGAAAAACATTTCTGTGCATAGAAACGTTCTTGCTGCA  
 ATCAGCCCTTACTTCAGATCCATGTTCACTAGCGGCTTACAGAAAGTACTCAAAAAGAAGTTCGAATAG  
 TTGGTGTGAAGCTGAATCGATGGATTTAGTGTGAAGTATGCCTACACTCCAGAGTTATTCTTACAGA  
 GGCCAATGTTCAAGCCTTGTTCACTGCAGCTAGCATCTCCAGATTCTTCCATCCAAGACCAATGTGCT  
 AAGTATATGATCAGTCATTTGGACCCACAGAATCTATTGGGGTCTTTATCTTTGCTGATCATTATGGTC  
 ATCAGGAACTCGGAGATCGATCAAAAGAATACATTCGTAAGTATCTAGACAGTGACGATTTAAATGTAGACCGAGAA  
 GTTTCTCCAGTTGACAAAAGACCAACTGATAAGTATACTAGACAGTGACGATTTAAATGTAGACCGAGAA  
 GAGCATGTTTATGAAAGCATTATAAGGTGGTTGAGCATGAACAGAATGAAAGAGAAGTGACCTTCCAG  
 AAATTTTGTCTAAATGCATACGTTTTCTCTGATGGAAGATACCTTTATAGAGAAAATTCACCTCAGTT  
 TGCACAGGCTATAGCCAAAAGCTGTGTAGAAAAGGGACCATCAACACCAATGGCTGTACACAGAGGCTT  
 GGAATGACTGCTTCTGAAATGATCATATGTTTTGATGCTGCCACAAACACTCAGGAAAGAAGCAAAACAG  
 TGCCTTGCTAGATATAGTCACAGGAAGGGTGTAAACTATGCAAAACCAAAATGACCTGAGAGAAGT  
 TGGGATCTTGATCACCAGATAATGACATTTACATTGCAGGAGGGTACAGGCCAAGCAGCAGTGAGGTC  
 TCCATCGACCATAAGGCAGAAAATGATTTCTGGATGTATGATCATTCCACCAATAGATGGCTATCCAAAC  
 CATCCTTGCTTCGAGCCAGAATAGGCTGCAAACTTGCTATTGCTGTGGTAAAATGTATGCAATCGGAGG  
 TCGTGTTTATGAAGGTGATGGGAGAACTCACTAAAATCTGTTGAGTGCTACGACAGTAGAGAGAATTGT  
 TGGACGACTGTTGCGCGATGCCAGTTGCAATGGAATTCATAATGCTGTGGAGTACAAAGAGAAGATCT  
 ATGTTTTACAGGAGAATTTTTCTCTTCTATGAGCCTCAAAAAGACTACTGGGGTTTCTTAACCCCAT  
 GACTGTGCCTAGAATCCAGGGCTTAGCAGCTGTATACAAGGACTCTATCTACTACATAGCTGGAACCTGT  
 GGAAATCATCAACGTATGTTTACTGTAGAAGCCTATGATATTGAGCTAAATAATGGACTCGTAAGAAAG  
 ACTTTCCATGTGATCAGTCCATAAATCCATACCTTAACTGGTACTTTTCCAGAACAAATCCATTTATT  
 TGTTTCAGCTACTCAAGTACTGTTGAAGAACAGTCTTCAGAACAGCAGAAAAAATCCCTTTACCAA  
 TATGATGACATTGCTGACCAGTGGATGAAAGTGTATGAGACCCAGATCGGCTCTGGGACCTTGGCCGGC  
 ATTTTGAATGTGCTGTTGCTAACTGTATCCTCAGTGTCTTCAGAAAGTACTC

**ACGCGT**ACGCGGCCGCTCGAGCAGAACTCATCTCAGAAGAGGATCTGGCAGCAATGATATCCTGGATT  
 ACAAGGATGACGACGATAAGGTTTAA

**Protein Sequence:**

>RC229306 representing NM\_032505  
 Red=Cloning site Green=Tags(s)

MAASADLSKSSTPENGIPSSDPASDAMPFHACSILKQLKTMDEGQLTDIVVEVDHGKTFSCHRNVLAA  
 ISPYFRSMFTSGLTESTQKEVRIVGVEAESMDLVNAYTSRVILTEANVQALFTAASIFQIPSIQDQCA  
 KYMISHLDPQNSIGVFIADHYGHQELGDRSKEYIRKKFLCVTKEQEFLLTKDQLSILSDDLNVDRE  
 EHVYESIIRWFEHEQNEREVHLPEIFAKCIRFPLMEDTFIEKIPPQFAQAIKSCVEKGPSNTNGCTQRL  
 GMTASEMIICFDAAHKHSGKKQTPCLDIVTGRVFKLCKPPNDLREVILVSPDNDIYIAGGYRPSSEV  
 SIDHKAENDFWMYDHSTNRWLSKPSLLRARIGCKLVYCCGKMYAIGGRVYEGDGRNSLKSVECYDSRENC  
 WTTVCAMPVAMEFHNAVEYKEKIYVLQGEFFLFYEPQKDYWGFLTPMTVPRIQGLAAVYKDSIYYIAGTC  
 GNHQRMFTVEAYDIELNKWTRKKDFPCDQSNPYLKLVLVFNKHLFVRATQVTVEEHVFRTRKNSLYQ  
 YDDIADQWMKVYETPDRLWDLGRHFECVAKLYPQCLQKVL

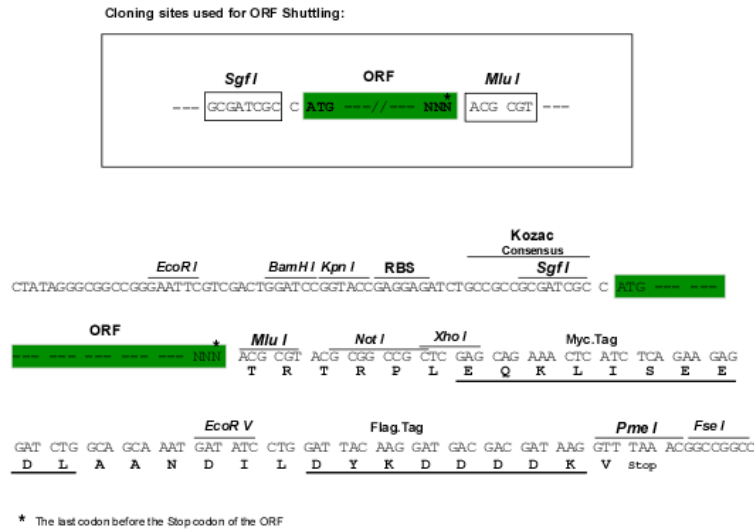
**TR**TRPLEQKLISEEDLAANDILDYKDDDDKV

**Chromatograms:**

[https://cdn.origene.com/chromatograms/mk8035\\_d03.zip](https://cdn.origene.com/chromatograms/mk8035_d03.zip)

Restriction Sites: SgfI-MluI

Cloning Scheme:



ACCN: NM\_032505

ORF Size: 1803 bp

OTI Disclaimer: The molecular sequence of this clone aligns with the gene accession number as a point of reference only. However, individual transcript sequences of the same gene can differ through naturally occurring variations (e.g. polymorphisms), each with its own valid existence. This clone is substantially in agreement with the reference, but a complete review of all prevailing variants is recommended prior to use. [More info](#)

OTI Annotation: This clone was engineered to express the complete ORF with an expression tag. Expression varies depending on the nature of the gene.

Components: The ORF clone is ion-exchange column purified and shipped in a 2D barcoded Matrix tube containing 10ug of transfection-ready, dried plasmid DNA (reconstitute with 100 ul of water).

Reconstitution Method:

1. Centrifuge at 5,000xg for 5min.
2. Carefully open the tube and add 100ul of sterile water to dissolve the DNA.
3. Close the tube and incubate for 10 minutes at room temperature.
4. Briefly vortex the tube and then do a quick spin (less than 5000xg) to concentrate the liquid at the bottom.
5. Store the suspended plasmid at -20°C. The DNA is stable for at least one year from date of shipping when stored at -20°C.

RefSeq: [NM\\_032505.3](#)

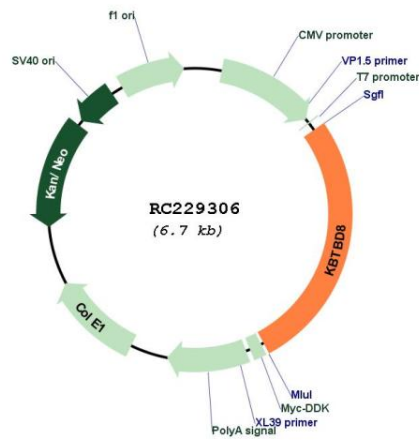
RefSeq ORF: 1806 bp

Locus ID: 84541

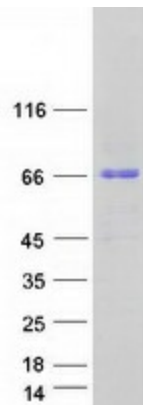
UniProt ID: [Q8NFY9](#)

<b>Cytogenetics:</b>	3p14.1
<b>MW:</b>	68.6 kDa
<b>Gene Summary:</b>	Substrate-specific adapter of a BCR (BTB-CUL3-RBX1) E3 ubiquitin ligase complex that acts as a regulator of neural crest specification (PubMed:26399832). The BCR(KBTBD8) complex acts by mediating monoubiquitination of NOLC1 and TCOF1: monoubiquitination promotes the formation of a NOLC1-TCOF1 complex that acts as a platform to connect RNA polymerase I with enzymes responsible for ribosomal processing and modification, leading to remodel the translational program of differentiating cells in favor of neural crest specification (PubMed:26399832).[UniProtKB/Swiss-Prot Function]

## Product images:



Circular map for RC229306



Coomassie blue staining of purified KBTBD8 protein (Cat# [TP329306]). The protein was produced from HEK293T cells transfected with KBTBD8 cDNA clone (Cat# RC229306) using MegaTran 2.0 (Cat# [TT210002]).