

Product datasheet for **RC229304**

CCDC48 (EFCC1) (NM_024768) Human Tagged ORF Clone

Product data:

Product Type:	Expression Plasmids
Product Name:	CCDC48 (EFCC1) (NM_024768) Human Tagged ORF Clone
Tag:	Myc-DDK
Symbol:	CCDC48
Synonyms:	C3orf73; CCDC48
Mammalian Cell Selection:	Neomycin
Vector:	pCMV6-Entry (PS100001)
E. coli Selection:	Kanamycin (25 ug/mL)



[View online »](#)

ORF Nucleotide Sequence:

>RC229304 representing NM_024768
 Red=Cloning site Blue=ORF Green=Tags(s)

TTTTGTAATACGACTCACTATAGGGCGGCCGGGAATTCGTCGACTGGATCCGGTACCGAGGAGATCTGCC
 GCC**GCGATCGCC**

ATGGAGCCGGTCAGCACGGGCGCGGAGGCCGCATGGAGGGCGGGAGGTGACCCGTACCGGGCAGCTG
 CGCGGCGCACGAGTGGCTGCTGAGCGCCCTGGCGCACCACTACGGGCTGGACCGCGCGTGGAGAACGA
 GATCGTGGTGCTGCCACCGGCCTGGACCAGTACCTGCAGGAGGTCTCCACCACCTGGACTGCCGCGGC
 GCCGGCGCTGCCCCGCGCGACTTCCGAGCGCTCTGCGCTGTGCTGGGGCTGCGCGCGGAGGGGGCCA
 CCACGGCCGGGAGGCAGCAGGTGACGGAACTCCAGAGATGTGACCCCGGGGATGCGGCCGCTGAGTT
 GGCCACGGACGGGACTCAGATACCGATGAAGAGGCGCGCTGGCGCTGCGCGCCGAGCCCGGAGCTC
 ACCTTCCGCCAGTCCACGCGCGCTCTGTGGCTACTTCGGCACCCGTGCGGGGCCCGGCTGCCCGCG
 GCGCTCTCAGCGAGCACATCGAGACGAGATCCGCTGCGCCGTCCGCGCCGCGCCGCCCGCCCGCTG
 CGCGCTGGCCCCGACAGCGGTCTGACTGTGAGCGCGTTGCGCGCTGGAGGAGAGAATAGCAGCTTG
 CGCGAGTTGGTGGAGGACTGCGCGCCGCGCTGCAGAGCAGTGTGCGCGCTGCCTAGCACTGCAGGTGC
 GACTCTGGAAGAGCCAGGCGAGCACCCACGAGATGGGGCACGGCGGGCCGGAGGCTGCGGTGCGGGAGCT
 GCGTCAGGCGCAGGGCGCCCTGGCTGCGGCGGAGGCCCGCGCTGGGCGGTGCGCCGTGGCCAGGCCGAG
 GTGCGGCGGCGCGGAGGAGGCCCGGCAGGTGGTGTGCGCAGCCTGCACCGGTGCGAGAGCTGGAGG
 CGCTGGCGCAACAGGTGCCCGCTTGCAGCGTGGGTGCGGCGGTGGAGGCGGAGCTGCAACGCTACAG
 GTCAGAGGATCCAGCTCCCAACCCCGCAGCTAGCCAACCCAGAGCCAGGAGACAAGAGTAATGAACCT
 GAAGATGCTGGGACCAGAGACCCAGACCCACTCCAGAGGGAGCCTGGCAGTCAGACAGCAGCTCTGGAA
 GCAGAGCCCTGGATGAAGTGGACGAGCAGCTGTTCCGCTCCGTGGAGGGCCAGGCCCTCTGACGAGGA
 GGAGGTGGAGGAGGAGAGGTGGCAGGAGGAGAAGAAGACGCCGCGCAGCCGAGGCCAAGACACTGTGGCC
 CGGCTCTCCAGCTGCAGAGGCGAGGTGTGATGACCAGACGCGGAGAAGCTCATGACTTACTTTGGTCACT
 TCGGCGGTGCCAACCATGCCATACCCTGGGGAGCTGGAGGCCTGCATTGCCATGCTGGTGGAGCAGCT
 GAGGACTCAGGGCTGCGGTGGGAGGACCCTGGGGACCTCTGAGGAGGAGGAGGAGTTGCAGCAGAAGGTG
 GAAGAGAATGAGCACCTGAGGCTGGAGCTGCAGATGGTAGAGACCAGAGGGTGGCGCTGTCCCTGCTGG
 AGGAGAAGCTGGTGGACGTGCTGCAGCTCCTGCAGAGGCTCCGGGACCTGAACATATCGAAAAGAGCCCT
 GGGGAAGATTTTCTGAGCACGCTGGACGCTTTCAGGGACCCACCCACGAGGGAAGGCCAGCCCTGCA
 GCCATCCTGGATGCCCTGCACCAAGCCTTGGCTGCCTGCCAGCTGTTGCGGAGACAGCCCTGGCACCAG
 CCTCTGCAGCAGCTGCGCTACCAACCCCTCCTCGTCTCTGC

ACGCGTACGCGGCGGCTCGAGCAGAAACTCATCTCAGAAGAGGATCTGGCAGCAAATGATATCCTGGATT
 ACAAGGATGACGACGATAAGGTTTAA

Protein Sequence:

>RC229304 representing NM_024768
 Red=Cloning site Green=Tags(s)

MEPVSTGAEAGMEGAGDPYRRPARRTQWLLSALAHYGLDRGVENEIVVLATGLDQYLQEVFHLDCRG
 AGRPRADFRALCAVLGLRAEGATTAGQAAGDGNRSDVTPGDAAEELATDGDSDTDEEARLALRAEPPPEL
 TFRQFHARLCGYFGTRAGPRLPRGALSEHIETQIRLRPRRRRRPPCAPGPDSPDCERVAREEENSSL
 RELVEDLRAALQSSDARCLALQVGLWKSQASTHEMGGHGPAAVRELQAQGALAAAEARAGRLRRGQAE
 VRRRAEEARQVVLRSLSLHRVRELEALAQQVPLQRWVRRLEAELQRYRSEDSQLPTPQLANPEPGDKSNP
 EDAGTRDPDPTPEGAWQSDSSSGSRALDEVDEQLFRSVEGQAASDEEEVEEERWQEEKTPAAEAKTLA
 RLSSCRGRCDQTAEKLMTYFGHFGGANHAHTLGELEACIAMLVEQLRTQCGGRTLGTSEEEAELQQKV
 EENEHLRLELQMVETERVRLSLEEKLVDVLQLLQRLRDLNISKRALGKILLSTLDAFRDPTHEGRPSA
 AILDALHQAALACQLRRQPSAPASAAAALTNPLLVS

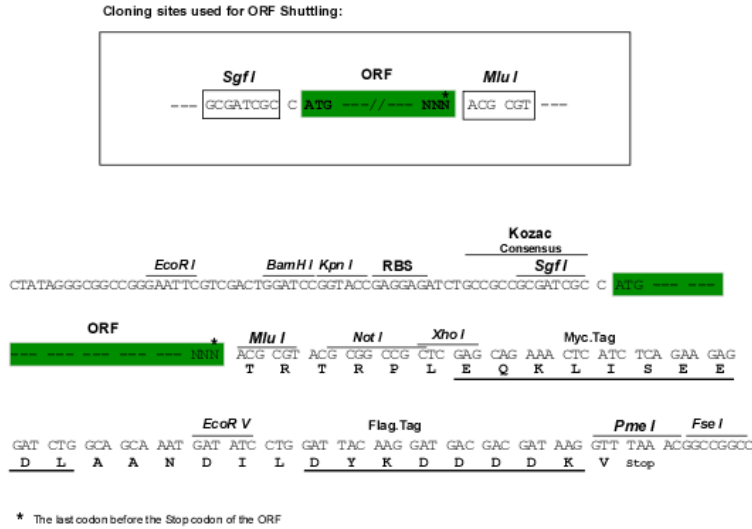
TRTRPLEQKLISEEDLAANDILDYKDDDDKV

Chromatograms:

https://cdn.origene.com/chromatograms/mk8069_a10.zip

Restriction Sites: SgfI-MluI

Cloning Scheme:



ACCN: NM_024768

ORF Size: 1794 bp

OTI Disclaimer: The molecular sequence of this clone aligns with the gene accession number as a point of reference only. However, individual transcript sequences of the same gene can differ through naturally occurring variations (e.g. polymorphisms), each with its own valid existence. This clone is substantially in agreement with the reference, but a complete review of all prevailing variants is recommended prior to use. [More info](#)

OTI Annotation: This clone was engineered to express the complete ORF with an expression tag. Expression varies depending on the nature of the gene.

Components: The ORF clone is ion-exchange column purified and shipped in a 2D barcoded Matrix tube containing 10ug of transfection-ready, dried plasmid DNA (reconstitute with 100 ul of water).

Reconstitution Method:

1. Centrifuge at 5,000xg for 5min.
2. Carefully open the tube and add 100ul of sterile water to dissolve the DNA.
3. Close the tube and incubate for 10 minutes at room temperature.
4. Briefly vortex the tube and then do a quick spin (less than 5000xg) to concentrate the liquid at the bottom.
5. Store the suspended plasmid at -20°C. The DNA is stable for at least one year from date of shipping when stored at -20°C.

RefSeq: [NM_024768.3](#)

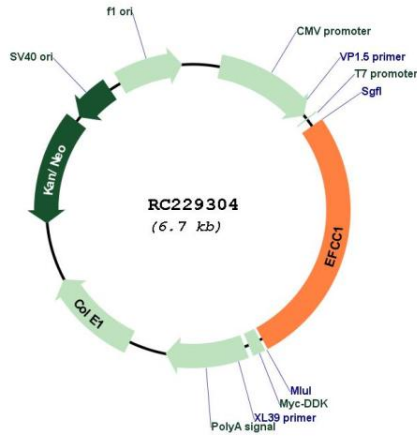
RefSeq ORF: 1797 bp

Locus ID: 79825

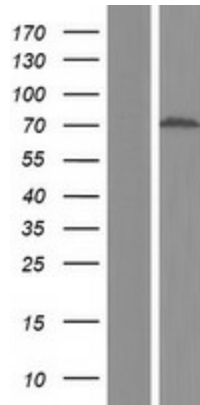
UniProt ID: [Q9HA90](#)

Cytogenetics: 3q21.3
 MW: 65.5 kDa

Product images:



Circular map for RC229304



Western blot validation of overexpression lysate (Cat# [LY432321]) using anti-DDK antibody (Cat# [TA50011-100]). Left: Cell lysates from untransfected HEK293T cells; Right: Cell lysates from HEK293T cells transfected with RC229304 using transfection reagent MegaTran 2.0 (Cat# [TT210002]).