

Product datasheet for **RC229296**

EGR4 (NM_001965) Human Tagged ORF Clone

Product data:

Product Type:	Expression Plasmids
Product Name:	EGR4 (NM_001965) Human Tagged ORF Clone
Tag:	Myc-DDK
Symbol:	EGR4
Synonyms:	AT133; NGFI-C; NGFIC; PAT133
Mammalian Cell Selection:	Neomycin
Vector:	pCMV6-Entry (PS100001)
E. coli Selection:	Kanamycin (25 ug/mL)



[View online »](#)

ORF Nucleotide Sequence:

>RC229296 representing NM_001965
 Red=Cloning site Blue=ORF Green=Tags(s)

TTTTGTAATACGACTCACTATAGGGCGGCCGGAATTCGTCGACTGGATCCGGTACCGAGGAGATCTGCC
 GCC**CGCATCGCC**

ATGGCAGTGGCCCGGGAGTCGGAAGCCCGGAGCCAGCGCCGCCAGCTATATAAGTGGGGGGCTGTG
 GGCTGGGGGAGCCCGGCAGCGCTTTGGAGAGCGAGGAGCCGCCCGAGGCGCGTGC GGCGAGCGAG
 GGCGCCGCGGCTCCCGACTCCTTTCCAGAGGTGAGTGCCGAAGCCAGGAGCCGGGGCCTAGTCT
 GTGCGCTGCGGGGAACCCCTACCGCCAGCCTCCCGCCACCCGCGCGCCCAAGCCAGCGGGCGAGGC
 CCCGGGCGCCACAGCCGGCGCGGCCATGCTCCACCTTAGCGAGTTTTCCGAACCCGACGCGCTCT
 CGTCAAGTCCACTGAAGGCTGTTGCGCCGAACCCAGCGCTGAATTGCCCGGCTGCCTGCCAGGGACGCT
 CCCGCGGCCACCGCTACCCTGGAGCAGCGACTTCTTGAGCTGGGCTTTGAACAGCTGCGGCGCAAGT
 GGGACTTAGCCGACTCCTGCTTCTGGAGGGCTGCGCCACACCCCTCCCGGCTCAGTACAGCGG
 TAGCTTCTTATTAGGCAGTGC CGAACACCCGACGACCCGGAGGCACTCTTCAACCTCATGTGGGC
 ATCTTAGGCTGGCACCTTCCCGGTCCAGAGGCAGCAGCTCCAGATCCCGCTGGATGCCCTTTTC
 CTGCGGGTCCGATGCCTTGCTGCGGGTCCGCGGACCTTTACTCCCGGATCTGGGCGTGCCCTTT
 CCCAGAGGCGTTCTGGGAGGCTCGCCTTGCGCGGGTGCCTTGCAGTGCCTGTATGAGCCTCAGCTC
 TCCCGCCCGACGTCAAGCCCGGCTCCGGGCGCTCCCGCTCGCCAGCGCTGGACGCTGTCTGCTCCT
 TCAAGGTCCCTACGCGCCCTGGGAGTGTCTTCTGTGGGGGCCCCAGGAACTGTGGGTACAGGGAGA
 CTACCAGCCGCCCGGAGGCTCGTTTTCCCGTAATAGGGACCAAGATTGAGGACTTGCTGTCCATCAGC
 TGCCCTGCGGAACTGCCGGCGTCCAGCCAACAGACTATCCAGCGGGGCTATGACGCTTTCCCGC
 TGGCCCCGGTGACTTAGGGGAGGGGGCTGAGGGCTCCTGGGCTCCTGACCCCTCCTAGTGGGGAGGG
 AGGGAGTAGCGGCGACGCGGAGAGTTTTCTGGCCAGTACGACGCTCAGCTTTCCCGCTGGGCTTCGC
 AGCGCCGCGCGCGGACTTCCCTAAACCTCTGGTGGCGGACATCCCTGGAAGCAGTGGCGTGGCTGCAC
 CACCCGTGCCGCGCGCGCCACCCCTTTCCCGAGGCAAGGCGGACGCAAGGGGCGCGCGCGCG
 CAAATGCAGCACGCGTCTTCTGCCGCGCGCCAGCCAAAGGCCTTCGCTTGCCCGGTGGAGAGTTGT
 GTGCGGAGCTTTGCGCGCTCCGACGAGCTCAATCGCCACCTGCGCATCCACAGGGCCACAAACCTTCC
 AGTGCCGATCTGCTCCGCACTTACGCCGACGACCACTACCACGCAGTGGCACCACACCGG
 CGAGAAGCCTTTTGTTCGACGTGTGCGCGCGCGCTTCGCGCGCAGCGATGAGAAGAAACGGCACAGC
 AAGGTGACCTCAAGCAGAAGGCGCGCGCGAGGAGCGGCTCAAGGGCTCGGCTTTACTCGCTGGCC
 TCTCCTTCGCTTCTC

ACGCGTACGCGGCGGCTCGAGCAGAACTCATCTCAGAAGAGGATCTGGCAGCAAATGATATCCTGGATT
 ACAAGGATGACGACGATAAGGTTTAA

Protein Sequence:

>RC229296 representing NM_001965
 Red=Cloning site Green=Tags(s)

MAVARGVGSPEPAPPQLYKWGGCGLGEPGSALERRGAAARGRCGRARAPRLPDSFPRGECPKPGARAPRS
 VRCGEPLPPASPPPAPQAQRARPRAPHSRRRAMLHLSEFSEPDALLVKSTEGCCAEPSAELPRLPARDA
 PAATGYPGAGDFLSWALNSCGASGDLADSCFLEGPAPTPPPGLSYSGSFFIQAVPEHPHDPEALFNLMSG
 ILGLAPFPGPEAAASRSPLDAPFPAGSDALLPGPPDLYSPDLGAAPFPEAFWEASPCAGAPSQCLYEPQL
 SPPDVKPKLRAPPASPALDAVSFAFGPYAPWELLSVGAPGNCGSQGDYQAAPEARFPVIGTKIEDLLSIS
 CPAELPAVPANRLYPSGAYDAFPLAPGDLGEGAELPGLLTPPSGEGSSGDGGEFLASTQPQLSPLGLR
 SAAAADFVKPLVADIPGSSGVAAPPVPPPPPTFPQAKARRKRRGGKCTRFCPRPHAKAFACPVESC
 VRSFARSDENRHLRIHTGHKPFQCRICLRNFRSRSDHLTHVRHTHTGKPFACDVCGRRFARSDEKKRHS
 KVHLKQKARAEERLKGFLGFYSLGLSFASL

TRTRPLEQKLISEEDLAANDILDYKDDDDKV

Chromatograms:

https://cdn.origene.com/chromatograms/mk8035_f10.zip

Restriction Sites: SgfI-MluI

Cloning Scheme:



ACCN: NM_001965

ORF Size: 1767 bp

OTI Disclaimer: Due to the inherent nature of this plasmid, standard methods to replicate additional amounts of DNA in E. coli are highly likely to result in mutations and/or rearrangements. Therefore, OriGene does not guarantee the capability to replicate this plasmid DNA. Additional amounts of DNA can be purchased from OriGene with batch-specific, full-sequence verification at a reduced cost. Please contact our customer care team at custsupport@origene.com or by calling 301.340.3188 option 3 for pricing and delivery.

The molecular sequence of this clone aligns with the gene accession number as a point of reference only. However, individual transcript sequences of the same gene can differ through naturally occurring variations (e.g. polymorphisms), each with its own valid existence. This clone is substantially in agreement with the reference, but a complete review of all prevailing variants is recommended prior to use. [More info](#)

OTI Annotation: This clone was engineered to express the complete ORF with an expression tag. Expression varies depending on the nature of the gene.

Components: The ORF clone is ion-exchange column purified and shipped in a 2D barcoded Matrix tube containing 10ug of transfection-ready, dried plasmid DNA (reconstitute with 100 ul of water).

Reconstitution Method:

1. Centrifuge at 5,000xg for 5min.
2. Carefully open the tube and add 100ul of sterile water to dissolve the DNA.
3. Close the tube and incubate for 10 minutes at room temperature.
4. Briefly vortex the tube and then do a quick spin (less than 5000xg) to concentrate the liquid at the bottom.
5. Store the suspended plasmid at -20°C. The DNA is stable for at least one year from date of shipping when stored at -20°C.

RefSeq: [NM_001965.3](#), [NP_001956.3](#)

RefSeq ORF: 1461 bp

Locus ID: 1961

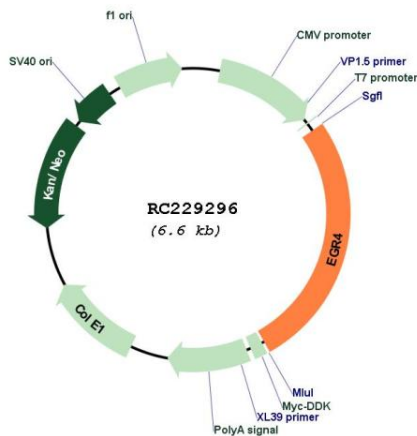
UniProt ID: [Q05215](#)

Cytogenetics: 2p13.2

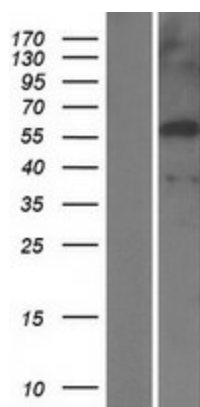
MW: 61.4 kDa

Gene Summary: Transcriptional regulator. Recognizes and binds to the DNA sequence 5'-GCGGGGCG-3' (GSG). Activates the transcription of target genes whose products are required for mitogenesis and differentiation (By similarity).[UniProtKB/Swiss-Prot Function]

Product images:



Circular map for RC229296



Western blot validation of overexpression lysate (Cat# [LY432313]) using anti-DDK antibody (Cat# [TA50011-100]). Left: Cell lysates from untransfected HEK293T cells; Right: Cell lysates from HEK293T cells transfected with RC229296 using transfection reagent MegaTran 2.0 (Cat# [TT210002]).