

Product datasheet for **RC229294**

KLHL35 (NM_001039548) Human Tagged ORF Clone

Product data:

Product Type:	Expression Plasmids
Product Name:	KLHL35 (NM_001039548) Human Tagged ORF Clone
Tag:	Myc-DDK
Symbol:	KLHL35
Mammalian Cell Selection:	Neomycin
Vector:	pCMV6-Entry (PS100001)
E. coli Selection:	Kanamycin (25 ug/mL)



[View online »](#)

ORF Nucleotide Sequence:

>RC229294 representing NM_001039548
 Red=Cloning site Blue=ORF Green=Tags(s)

TTTTGTAATACGACTCACTATAGGGCGGCCGGAATTCGTCGACTGGATCCGGTACCGAGGAGATCTGCC
 GCC**CGGATCGCC**

ATGCGGCAAGGCCATGCGCCGAGGAGTTCGAGGCCGGCTGCGAAGCGCCGTGCGCGGGTCCGTGCCACG
 CGCAGCGCGTGCAGGCCCTGAACGCCCTACCGCGGAGCGGCACCCTACCGACGTGGTGTGCGCGC
 CGGCGGGCGGACTTTCCGTGCCACCGCGCGGCTCAGCGCGGCGAGCGCCTACTTCCGACGTTGTT
 GCGGCCGGGCGGCCGAGCGCGGCCGCGCGTGGTCCAGTGGTCCAGTAGCTCCCGAGGCGCCAGGCA
 CGAGCCCGCGGGGCGGCGCGCGCTGGCCGTGGTGTGCGACTACGTGTACGGAGCGGGCGTGGCGT
 GCGCGCGGAGGACGAGGCGCGGCCGTGCTGGCGTGGCGGAGCGGCTGGGCGTGGCGGGCTGCGCGAG
 GCCTGCGTGCCTTTCTCGAGGGCCGCTGCGCGCCGCAACAGCCTAGCGCTGCGCCGCGTGGCCGCC
 CCTTCTCGCTGGCCCGCTGGCCGAGCGTGGCGCGCGTCTGCGTACGGCCTTCGCCAGGTGGCGCG
 CCACGCCGACTTCTGGAGCTGGCGCTGACGAGGTGGTGGCGTGTGGCGGACCCCGCTGGGCGTG
 GCGCGCAGGAGGCCGTGTTGAAGCGCCATGCGCTGGGTGCGCCACGACGCGCCGCGCCCGCGGCC
 AGCTGCGACGCTGCTGGAGCAGTGGCCCTGCCGCTACTGGCGCCCGCTTACTTCTGGAGAAGGTGGA
 GGCGGACGAGTGTGCAGGCCGCGCGGAGTGGCCCGCGTGTGCTCGAGGCTCGCGCCTGCTTCATC
 CTGGGCGCGAGGCCGCTGCGTGGGACCCGCGCGGAGATTCATGGACCTAGCTGAAGTGATCGTGG
 TCATCGGCGGTTGCGACCGCAAAGTCTCCTGAAGTGCCTTCGCCGATGCCTACCATCCAGAGAGCCA
 GCGGTGGACCCACTGCCAGCCTGCCCGGCTACACTCGCTCAGAATTCGCCGCTGTGCTCTCCGCAAT
 GACGCTACGCTCCGGAGGCCACATCAACAGTCATGATGTGTGGATGTTAGCTCCCATCTGCACACT
 GGATCAAGGTAGCTCTCTGCACAAGGGCAGGTGGAGGCAAGATGGCAGTTGTGCAAGGGCAGCTGTT
 CGCGGTGGGTGGCTTCGACGCGCTGAGGCGCTGCACAGCGTGGAGCGCTACGACCCCTTCTCCAACACC
 TGGGCGCGCCGCGCCCTCCCGGAGGCCGTGAGCTCGCGCGCGTGGCGTCTGCGCGGCAAGCTCT
 TCGTGATTGGGGGCGCCAGGCGAGGCGCGTCAACACGGACAAGGTGCAGTGCTTTGACCCCAAGGAGGA
 CCGGTGGAGCCTGCGGTACCCAGCACCTTCTCACAGCGGTGTCTCGAGGCTGTCTCCCTTGAGGACACC
 ATCTATGTCATGGGGGTCTCATGAGCAAAATCTTACCTATGATCCAGGCACAGATGTGTGGGGGAGG
 CAGCTGTCTCCCGAGCCTGTGAAAGCTGTGGAGTCACTGTGTGTGACGGGAAGTCCACATCCTTGG
 CGGCGGGATGATCGCGGAGAAAGCACCGATAAGGTCTTACCTTTGACCCAGCAGTGGCAGGTGGAG
 GTCAGCCATCCCTGCAGCGCTGCACCAGTCCCACGGCTGTGTACCATCATCCAGAGCTTGGGCGAG

ACGCGTACGCGGCGGCTCGAGCAGAAACTCATCTCAGAAGAGGATCTGGCAGCAAATGATATCCTGGATT
 ACAAGGATGACGACGATAAGGTTTAA

Protein Sequence:

>RC229294 representing NM_001039548
 Red=Cloning site Green=Tags(s)

MRQGHAPPEESEPGEAPCAGPCHAQRVLQALNAYRRSGTLTDVVLRAGGRDFPCHRAAL SAGSAYFRSLF
 AAGRPERGPAVVPVVPVAPEAPGTSPAGAAAALAVVLDYVYGAGVRLRAEDEAAAVALAERLGVAGLRE
 ACVRFLEGRRLAANSLARRVAAAFSLAPLAERCGRVLRQAF AEVARHADFLELAPDEVVALLADPALGV
 AREEAVFEAMRWVRHDAPARRGQLRRLLEHVRLPLLAPAYFLEKVEADELLQACGECRPLLLLEARCFI
 LGREAGALRTRPRRFMDLAEVIVVIGGCDRKLKLPFADAYHPESQRWTPPLPSLPGYTRSEFAACALRN
 DVYVSGGHINSHDVWFMFSSHLHTWIKVASLHKGRWRHKMAVVQQLFAVGGFDGLRRLHSVERYDPFSNT
 WAAAAPLPEAVSSAAVASCAGKLFVIGGARQGGVNTDKVQCFDPKEDRWLSRSPAPFSQRCL EAVSLEDT
 IYVMGGLMSKIFTYDPGTDVWGEAAVLPSPVESCGVTVC DGKVVHILGRRDDRGESTDKVFTFDPSGQVE
 VQPSLQRCTSSHGCVTIIQSLGR

TRTRPLEQKLISEEDLAANDILDYKDDDDKV

Chromatograms:

https://cdn.origene.com/chromatograms/mk8036_a11.zip

Restriction Sites:

Sgfl-Mlul

Cloning Scheme:

ACCN: NM_001039548

ORF Size: 1749 bp

OTI Disclaimer: Due to the inherent nature of this plasmid, standard methods to replicate additional amounts of DNA in E. coli are highly likely to result in mutations and/or rearrangements. Therefore, OriGene does not guarantee the capability to replicate this plasmid DNA. Additional amounts of DNA can be purchased from OriGene with batch-specific, full-sequence verification at a reduced cost. Please contact our customer care team at custsupport@origene.com or by calling 301.340.3188 option 3 for pricing and delivery.

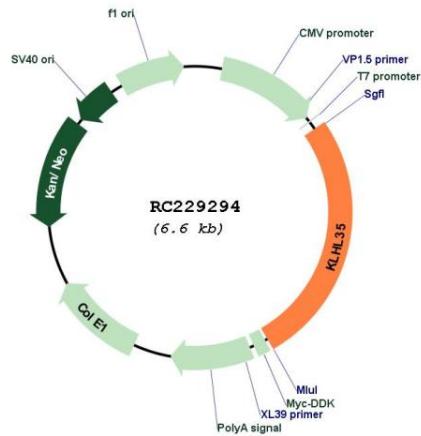
The molecular sequence of this clone aligns with the gene accession number as a point of reference only. However, individual transcript sequences of the same gene can differ through naturally occurring variations (e.g. polymorphisms), each with its own valid existence. This clone is substantially in agreement with the reference, but a complete review of all prevailing variants is recommended prior to use. [More info](#)

OTI Annotation: This clone was engineered to express the complete ORF with an expression tag. Expression varies depending on the nature of the gene.

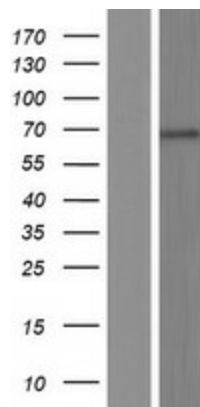
Components: The ORF clone is ion-exchange column purified and shipped in a 2D barcoded Matrix tube containing 10ug of transfection-ready, dried plasmid DNA (reconstitute with 100 ul of water).

- Reconstitution Method:**
1. Centrifuge at 5,000xg for 5min.
 2. Carefully open the tube and add 100ul of sterile water to dissolve the DNA.
 3. Close the tube and incubate for 10 minutes at room temperature.
 4. Briefly vortex the tube and then do a quick spin (less than 5000xg) to concentrate the liquid at the bottom.
 5. Store the suspended plasmid at -20°C. The DNA is stable for at least one year from date of shipping when stored at -20°C.

RefSeq: [NM_001039548.2](#), [NP_001034637.2](#)
 RefSeq ORF: 1752 bp
 Locus ID: 283212
 UniProt ID: [Q6PF15](#)
 Cytogenetics: 11q13.4
 MW: 62.7 kDa

Product images:


Circular map for RC229294



Western blot validation of overexpression lysate (Cat# [LY432311]) using anti-DDK antibody (Cat# [TA50011-100]). Left: Cell lysates from untransfected HEK293T cells; Right: Cell lysates from HEK293T cells transfected with RC229294 using transfection reagent MegaTran 2.0 (Cat# [TT210002]).