

Product datasheet for **RC229292**

GASK1A (NM_001129908) Human Tagged ORF Clone

Product data:

Product Type:	Expression Plasmids
Product Name:	GASK1A (NM_001129908) Human Tagged ORF Clone
Tag:	Myc-DDK
Symbol:	GASK1A
Synonyms:	C3orf41; FAM198A
Mammalian Cell Selection:	Neomycin
Vector:	pCMV6-Entry (PS100001)
E. coli Selection:	Kanamycin (25 ug/mL)



[View online »](#)

ORF Nucleotide Sequence:

>RC229292 representing NM_001129908
 Red=Cloning site Blue=ORF Green=Tags(s)

TTTTGTAATACGACTCACTATAGGGCGGCCGGGAATTCGTCGACTGGATCCGGTACCGAGGAGATCTGCC
 GCC**CGGATCGCC**

ATGGCGTCTTGGCTCCGGAGAAAGCTGCGTGGCAAGAGGCGGCCAGTGATAGCGTTCTGCCTCTTGTATGA
 TCCTATCTGCGATGGCTGTCACCCGCTTTCCCCACAGCGTCCATCCGCCGGCCAGACCTTGGTCCCAT
 GGAGCCTCAGGGGTAAGTGGCGCCCTGCAACCCATATCCGGCAGGCTTTGAGCTCCAGCCGGAGGCAG
 CGGGCAAGAAACATGGGCTTCTGGAGAAGCGTCTTTGCCAGGAACTCCATCTTGGTCTGTGCTGAGG
 AGCAAGGCCATAGAGCAAGAGTGGACAGAAGCAGGGAGTCCCCAGGAGGGGACCTCAGGCATCCAGGGAG
 GGTGAGGAGGGACATTACTTTGTCAGGACATCCAAGACTCAGTACTCAGCATGTTGTGCTCTGAGGGAG
 GATGAGGTTGGAGATCCAGGAACCAAAGACCTGGGCCACCCAGCATGGCAGTCCCATCCAGGAGACAC
 AGAGTGGGTGGTACCCTGGTCACTCCAGGGAGTGACATGGCAGCTTTACCGCTTGGAGAGC
 TACTTCTGGGCTGACACTCTGGCCCATACAGCAGAAGCAGGGATCTGCTGGGAGCTGAGAACAGAGCC
 TTGACTGGTGGGCAACAAGCAGAGGATCCACCTTGGCCCTCAGGAGCTCATCAGTGGCCTGGCTCTGTTG
 AGAAGCTGCAAGGTCAGTATGGTGTGATGCTGAGACGCTGTTGAGCAGCTCAGGACTGGTGGGACGGC
 TCCCCATGGCTGACAGACCACGATGTGCAGATGCTCCGTCTGTTGGCACAGGGGAGGTGGTGGACAAA
 GCCAGGTCCTCCGCCATGGGCAGGTGCTACAGGTTGGCTTCTCCACTGAGGCTGCCCTTCCAGGACTGT
 CCTCTCCAGGCTCAGCAACTCTGTTCCCAAGGGCTCTGTGGCCTGATCAAGAGGCTGGGGACCTGCC
 TGAGGTCCTGTCTTCCACGTAGATCGTGTGCTGGGGCTGCGCCGGAGCCTACCTGCTGTGGCCCGCCG
 TTCCATAGCCCCCTCTGCCCTACCGATACACAGACGGTGGAGCAAGCCTGTATCTGGTGGCCACCCG
 ATGTGCAGCACCTGAGCGACCCAGATGAGGATCAGAAGTCTCTGGCCTTGGGCTGGCTGACATCAGGC
 CCTGCTGGCACACAGCTGCAACTGGCCAGGCCAGGCCCGTGGCCGGCATCCACCATACCGAGTGGGCA
 CGCCTGGCGCTCTTCGACTTCTGTTGACAGTCCACGACCGCTTGGATCGCTACTGCTGTGGCTTCGAGC
 CTGAGCCCTCAGACCCCTGTGTGGAAGAGAGGCTCCGAGAGAAATGCCAGAACCCAGCCGAGCTGCGGCT
 GGTCCACATCCTGGTCCGGAGCAGCGATCCATCTCACCTGGTCTACATCGATAACGCTGGCAACCTTCAG
 CACCCTGAGGACAAGCTGAACTTTCGGCTGCTGGAGGGCATAGATGGGTTTCTGAGTCTGCCGTGAAGG
 TTCTCGCATCAGGGTGTCTACAGAACATGCTGCTGAAGTCGTCAGATGGACCCAGTGTCTGGGAAAG
 CCAAGGCCGAGCCAGGGGCTGAAGCAGGTCTCCAGACCCTGGAGCAGCGAGGACAGGTGCTGCTGGGA
 CACATCCAAAAGCACACCTCACACTCTCAGGGACGAGGACCCA

ACGCGTACGCGGGCCGCTCGAGCAGAAACTCATCTCAGAAGAGGATCTGGCAGCAAATGATATCCTGGATT
 ACAAGGATGACGACGATAAGGTTTAA

Protein Sequence:

>RC229292 representing NM_001129908
 Red=Cloning site Green=Tags(s)

MASWLRRKLRGKRRPVIAFCLLMILSAMAVTRFPPQRPASAGPDGPMPEQVGTGAPATHIRQALSSRRQ
 RARNMGFWRSRALPRNSILVCAEEQGHRRVDRSRESPGGDLRHPGRVRRDITLSGHPRLSTQHVVLLRE
 DEVGDPGTKDLGHPQHGSPIQETQSEVVTLVSPLPGSDMAALPAWRATSGLTLPHTAEGRDLLGAENRA
 LTGGQQAEDPTLASGAHQWPGSVEKLQGSVWCDAETLLSSRTGGQAPPWLTDHVQMLRLLAQGEVVDK
 ARVPAHQVQLQVGFSTEALQDLSSPRLSQLCSQGLCGLIKRPGDLPEVLSFHVDRVGLRRSLPAVARR
 FHSPLLPYRYTDGGARPVIWWAPDVQHLSDPDEDQNSLALGWLQYQALLAHSCNWPQAPCPGIHHTEWA
 RLALFDLQLQVHDRLDRYCCGFEPSPDPCVEERLREKQNPALRLVHILVRSSDPHLYIDNAGNLQ
 HPEDKLNFRLLLEGIDGFESAVKVLASGCLQNMLLKSQMDPVFVWESQGAQGLKQVLTLEQRGQVLLG
 HIQKHNLTLFRDEDP

TRTRPLEQKLISEEDLAANDILDYKDDDDKV

Chromatograms:

https://cdn.origene.com/chromatograms/mk8035_h12.zip

Restriction Sites:

Sgfl-Mlul

Cloning Scheme:


ACCN: NM_001129908

ORF Size: 1725 bp

OTI Disclaimer: The molecular sequence of this clone aligns with the gene accession number as a point of reference only. However, individual transcript sequences of the same gene can differ through naturally occurring variations (e.g. polymorphisms), each with its own valid existence. This clone is substantially in agreement with the reference, but a complete review of all prevailing variants is recommended prior to use. [More info](#)

OTI Annotation: This clone was engineered to express the complete ORF with an expression tag. Expression varies depending on the nature of the gene.

Components: The ORF clone is ion-exchange column purified and shipped in a 2D barcoded Matrix tube containing 10ug of transfection-ready, dried plasmid DNA (reconstitute with 100 ul of water).

Reconstitution Method:

1. Centrifuge at 5,000xg for 5min.
2. Carefully open the tube and add 100ul of sterile water to dissolve the DNA.
3. Close the tube and incubate for 10 minutes at room temperature.
4. Briefly vortex the tube and then do a quick spin (less than 5000xg) to concentrate the liquid at the bottom.
5. Store the suspended plasmid at -20°C. The DNA is stable for at least one year from date of shipping when stored at -20°C.

RefSeq: [NM_001129908.3](#)

RefSeq ORF: 1728 bp

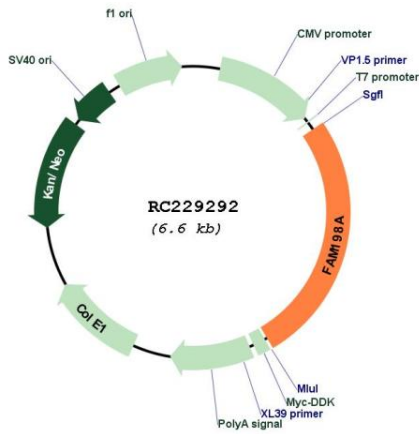
Locus ID: 729085

UniProt ID: [Q9UFP1](#)

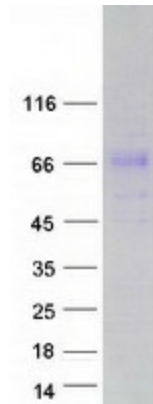
Cytogenetics: 3p22.1

MW: 63.5 kDa

Product images:



Circular map for RC229292



Coomassie blue staining of purified GASK1A protein (Cat# [TP329292]). The protein was produced from HEK293T cells transfected with GASK1A cDNA clone (Cat# RC229292) using MegaTran 2.0 (Cat# [TT210002]).