

Product datasheet for RC229283

SLC22A20 (NM_001004326) Human Tagged ORF Clone

Product data:

Product Type:	Expression Plasmids
Product Name:	SLC22A20 (NM_001004326) Human Tagged ORF Clone
Tag:	Myc-DDK
Symbol:	SLC22A20
Synonyms:	Oat6
Mammalian Cell Selection:	Neomycin
Vector:	pCMV6-Entry (PS100001)
E. coli Selection:	Kanamycin (25 ug/mL)
ORF Nucleotide Sequence:	>RC229283 representing NM_001004326 Red=Cloning site Blue=ORF Green=Tags(s)

TTTTGTAATACGACTCACTATAGGGCGGCCGGAATTCGTCGACTGGATCCGGTACCGAGGAGATCTGCC
GCC**CGATCGC**

ATGGCCATGGCCTTCACAGACCTGCTGGATGCTCTGGCAGCATGGGCCGCTTCCAGCTCAACCACACAG
CCCTGCTGCTGCTGCCCTGCGGCTGCTGGCTGCCACAATTCTGCAGAACTCACGGCCGTGTCCC
CCCCACCACTGCCGGGGCCCTGCCAACACACTGAGGCTCCACCAACGACTCGGGGGCTGGCTGAGG
GCCACCATACCCCTGGACCAGCTTGGGGCCCTGAGCCCTGCCGGCGCTTACCAAGCCTCAGTGGGCC
TGCTGAGCCCCAACTCCTCCATCCGGGGCGGCCACGGAGGGTGAAGGACGGCTGGTCTATAACCG
CAGTGTTCCTCCGTCACCATCGTGATGGAGTGGGATCTGGTGTGTGAGGCCCGACTCTCCGAGACCTG
GCGCAGTCCGTCTACATGGCCGGGTGCTGGTGGGGCTGCCGTGTTGGCAGCTTGGCAGACAGGCTGG
GCTGCAAGGGCCCTGGTCTGGTCTACCTGCAGCTGGCAGCTTCCGGGGCCGCCACAGCGTATTTAG
CTCCTTCACTGCTATTGCGTCTCCGGTCTCTGATGGGCATGACCTTCTTGGCATCATCTCAACTCC
GTCTCCCTGGTGGCTTCCAGAGTCATCCCGTGGCTCCTCTGATGGCAAGTCCAGTTAGCTGTACAG
AATCTGCAGAAGGTGGCTGCAATGAACGGGAGGAAGGAGGAAGGGAAAGGCTGACCAAGGAGGTGATGA
GCTCCTACATCCAAGCGAGTTTGAAGTGTCTGCACCTCAACTCAATCTTGGACCTTCCGAACCCC
GGCCATCCGCAAGGTACATGCTGTCTCATGGTATTTGGCTGGCAGGCAGCGCAGTTCCGGCTCTGGGG
AGCAAGGGGCTCCTGCGAACCCGAGTCCAGGAATGGGGCTCTTCTGCGGTAGCCCTGCCGGCCTGGG
CTTGCCCTTCGTCCACCTTCTCTTCCGCGAGGGAGAAACAGATCCTGAGTTCAAATTCAGAGC

ACGCGTACGCGGCCGCTCGAGCAGAACTCATCTCAGAAGAGGATCTGGCAGCAATGATATCCTGGATT
ACAAGGATGACGACGATAAGGTTTAA



[View online »](#)

Protein Sequence: >RC229283 representing NM_001004326
 Red=Cloning site Green=Tags(s)

MAMAFTDLLDALGSMGRFQLNHTALLLLPCGLLACHNFLQNFTA AVPPHHCGRGPANHTEASTNDSGAWLR
 ATIPLDQLGAPEPCRRFTKPQWALLSPNSSIPGAATEGCKDGWVYNRSVFPSTIVMEWDLVCEARTLRDL
 AQSYYMAGVLVGAAVFGSLADRLGCKGPLVWSYLQLAASGAATAYFSSFAYCVFRFLMGMTFSGIILNS
 VSLVASRVIPLAPPAWQVPVSCTESAEGGCNEREEGGRGKADQGGDELLHPKRVCKCLHLQLNLGPLPNP
 GHPQGHMLSHGDLRGRQRSSGSGEQGGSCEPESRNGRLPAVAPAGLGLPFVHLPLSAREKQILSSKFQS

TRTRPLEQKLISEEDLAANDILDYKDDDDKV

Chromatograms: https://cdn.origene.com/chromatograms/mk8036_a03.zip

Restriction Sites: SgfI-MluI

Cloning Scheme:



ACCN: NM_001004326

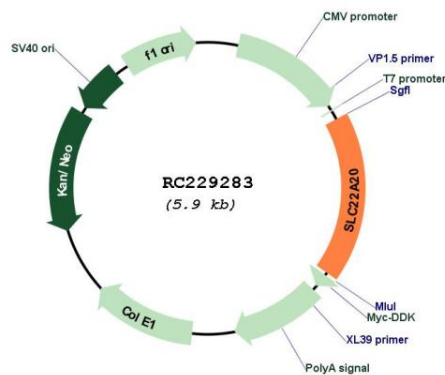
ORF Size: 1047 bp

OTI Disclaimer: Due to the inherent nature of this plasmid, standard methods to replicate additional amounts of DNA in E. coli are highly likely to result in mutations and/or rearrangements. Therefore, OriGene does not guarantee the capability to replicate this plasmid DNA. Additional amounts of DNA can be purchased from OriGene with batch-specific, full-sequence verification at a reduced cost. Please contact our customer care team at custsupport@origene.com or by calling 301.340.3188 option 3 for pricing and delivery.

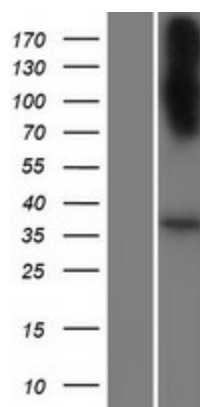
The molecular sequence of this clone aligns with the gene accession number as a point of reference only. However, individual transcript sequences of the same gene can differ through naturally occurring variations (e.g. polymorphisms), each with its own valid existence. This clone is substantially in agreement with the reference, but a complete review of all prevailing variants is recommended prior to use. [More info](#)

OTI Annotation:	This clone was engineered to express the complete ORF with an expression tag. Expression varies depending on the nature of the gene.
Components:	The ORF clone is ion-exchange column purified and shipped in a 2D barcoded Matrix tube containing 10ug of transfection-ready, dried plasmid DNA (reconstitute with 100 ul of water).
Reconstitution Method:	<ol style="list-style-type: none">1. Centrifuge at 5,000xg for 5min.2. Carefully open the tube and add 100ul of sterile water to dissolve the DNA.3. Close the tube and incubate for 10 minutes at room temperature.4. Briefly vortex the tube and then do a quick spin (less than 5000xg) to concentrate the liquid at the bottom.5. Store the suspended plasmid at -20°C. The DNA is stable for at least one year from date of shipping when stored at -20°C.
RefSeq:	<u>NM_001004326.4</u> , <u>NP_001004326.4</u>
RefSeq ORF:	1050 bp
Locus ID:	440044
Cytogenetics:	11q13.1
MW:	37.1 kDa

Product images:



Circular map for RC229283



Western blot validation of overexpression lysate (Cat# [LY432301]) using anti-DDK antibody (Cat# [TA50011-100]). Left: Cell lysates from untransfected HEK293T cells; Right: Cell lysates from HEK293T cells transfected with RC229283 using transfection reagent MegaTran 2.0 (Cat# [TT210002]).