

Product datasheet for **RC229282**

PRR5-ARHGAP8 (NM_181334) Human Tagged ORF Clone

Product data:

Product Type:	Expression Plasmids
Product Name:	PRR5-ARHGAP8 (NM_181334) Human Tagged ORF Clone
Tag:	Myc-DDK
Symbol:	PRR5-ARHGAP8
Mammalian Cell Selection:	Neomycin
Vector:	pCMV6-Entry (PS100001)
E. coli Selection:	Kanamycin (25 ug/mL)



[View online »](#)

ORF Nucleotide Sequence:

>RC229282 representing NM_181334
 Red=Cloning site Blue=ORF Green=Tags(s)

TTTTGTAATACGACTCACTATAGGGCGGCCGGGAATTCGTCGACTGGATCCGGTACCGAGGAGATCTGCC
 GCC**GCGATCGCC**

ATGAGTTCGCCAGCCTCAGTGACTGGGCAAGAGAGAGCCGCCGCCGCCGCGGACGAGCGGGGCACGC
 AGCAGCGCGGGCTGCGCCAACGCCACCTGGAACAGCATCCACAACGGGGTGATCGCCGCTTCCAGCG
 CAAGGGGCTGCCCGACCAGGAGCTTTCAGCCTCAACGAGGGCGTCCGGCAGCTGTTGAAGACAGAGCTG
 GGGTCTTCTTACGGAGTACCTGCAGAACCAGCTGCTGACAAAAGGCATGGTATCCTTCGGGACAAGA
 TTCGTTCTATGAGGAGCTGCAGAGAGACAAGCGCGCGGCTGCTGTGCTGGTGCACTGAGGAAGAG
 GCCCTCGTGGTCCCATGGCTGCCAGGATCCTGCGCTGAGCACGAGTACCCGTTCTACGACGTGGCC
 AGACATGGCATTCTGCAGGTGGCAGGGATGACCGCTTGAAGACGTGTGTACGTTACGCTGCTGCC
 GGATGCCACCCTCCACGAGCTGGACCACAGCGGCTGCTGGAGTATTTGAAGTACACACTGGACCAATA
 CGTTGAGAACGATTATACCATCGTCTATTTCCACTACGGGCTGAACAGCCGGAACAAGCCTTCCCTGGGC
 TGCTCCAGAGCCATACAAGGAGTTCGATAGGAAGTACAAGAAGAACTGAAGGCCCTCTACGTGGTGC
 ACCCCACAGCTTCATCAAGTCTGTGGAACATCTTGAAGCCCTCATCAGTCAACAAGTTGGGAAGAA
 AGTCATCTATTTCAACTACCTGAGTGAGCTCCACGAACACCTAAATACGACCAGCTGGTCATCCCTCCC
 GAAGTTTTGCGGTACGATGAGAAGCTCCAGAGCTGCACGAGGGCCGGACGCCGCTCCCAAGACAC
 CACCGCCGCGCCCCGCTGCCACACAGCAGTTTGGCGTCAGTCTGCAATACCTCAAAGACAAAATCA
 AGGCGAACTCATCCCCCTGTGCTGAGGTTACAGTGACGTACCTGAGAGAGAAAGGCCTGCGCACCGAG
 GGCCTGTTCCGGAGATCCGCCAGCGTGCAGACCGTCCCGGAGATCCAGAGGCTCTACAACCAAGGGAAGC
 CGTGAACTTTGACGACTACGGGACATTCACATCCCTGCCGTGATCCTGAAGACCTTCTGCGAGAGCT
 GCCCCAGCCGCTTCTGACCTTCCAGGCCTACGAGCAGATTCTCGGGATCACCTGTGTGGAGAGCAGCCTG
 CGTGTCACTGGTGCCGCCAGATCTTACGAGCCTCCAGAGCACAACACTACGTCGTCCTCCGCTACCTCA
 TGGGCTTCTGCAATGCGGTGTCCCGGAGAGCATCTTCAACAAAATGAACAGCTCTAACCTGGCCTGTGT
 CTTCCGGCTGAATTTGATCTGGCCATCCAGGGGCTCCTCCCTGAGTGCCTTGTGCCCTGAACATG
 TTCCTGAACTGCTGATCGAGTACTATGAAAAGATCTTACGACCCCGGAGGCACCTGGGGAGCACGGCC
 TGGCACCATGGGAACAGGGGAGCAGGGCAGCCCTTTCAGGAGGCTGTGCCACGGACACAAGCCACGGC
 CCTACCAAGCCTACCCTACCTCCGAGTCCCCTGATGGCAGCCAGAAGACGTCTC

ACGCGTACGCGGCCGCTCGAGCAGAAACTCATCTCAGAAGAGGATCTGGCAGCAAATGATATCCTGGATT
 ACAAGGATGACGACGATAAGGTTTAA

Protein Sequence:

>RC229282 representing NM_181334
 Red=Cloning site Green=Tags(s)

MSSPSLSDLGKREPAAAADERGTQRRACANATWNSIHNGVIAVFRKGLPDQELFSLNEGVRQLLKT
 GSFFTEYLQNQLTKGMVILRDKIRFYEELQRDKAAAAAVLGAVRKRPSVVP
 MAGQDPALSTSHPFYDVARHGILQVAGDDRFGRVVTFS
 CCRMPPSHELQRLLELYLKYTLDQYVENDYTI
 VYFHYGLNSRNPVSLGWLQ
 SAYKEFDRKYKKNLKYVYVHPTSF
 IKVLWNILKPLISHKFGKKVIYFNYLSELHEHLKYDQ
 LVIPPEVLR
 YDEKLQSLHEGRTPPTKTPPPRPLPTQQF
 GVSLLQYLKDKNQGELIPPVLRFTV
 TYLREKGLRTEGLFRRSASVQTVREIQRL
 YNQKPVNFDDYGDIHIPAVILKTF
 LRELQPPLTFQAYEQILGITCVES
 SLRVTGCRQILRSLPEHNYVLR
 YLMGFLHAVSRESIFNKMNSSNLACV
 FGLNIWPSQGVSSLSALVPLNMFTELLIEY
 YEKIFSTPEAPGEHGLAPWEQGSRAAPLQEA
 VPRTQATGLTKPTLPPSPLMAARRRL

TRTRPLEQKLISEEDLAANDILDYKDDDDKV

Chromatograms:

https://cdn.origene.com/chromatograms/mk8036_a04.zip

Restriction Sites:

Sgfl-Mlul

Cloning Scheme:



ACCN: NM_181334

ORF Size: 1665 bp

OTI Disclaimer: The molecular sequence of this clone aligns with the gene accession number as a point of reference only. However, individual transcript sequences of the same gene can differ through naturally occurring variations (e.g. polymorphisms), each with its own valid existence. This clone is substantially in agreement with the reference, but a complete review of all prevailing variants is recommended prior to use. [More info](#)

OTI Annotation: This clone was engineered to express the complete ORF with an expression tag. Expression varies depending on the nature of the gene.

Components: The ORF clone is ion-exchange column purified and shipped in a 2D barcoded Matrix tube containing 10ug of transfection-ready, dried plasmid DNA (reconstitute with 100 ul of water).

- Reconstitution Method:
1. Centrifuge at 5,000xg for 5min.
 2. Carefully open the tube and add 100ul of sterile water to dissolve the DNA.
 3. Close the tube and incubate for 10 minutes at room temperature.
 4. Briefly vortex the tube and then do a quick spin (less than 5000xg) to concentrate the liquid at the bottom.
 5. Store the suspended plasmid at -20°C. The DNA is stable for at least one year from date of shipping when stored at -20°C.

RefSeq: [NM_181334.4](#), [NP_851851.2](#)

RefSeq ORF: 1695 bp

Locus ID: 553158

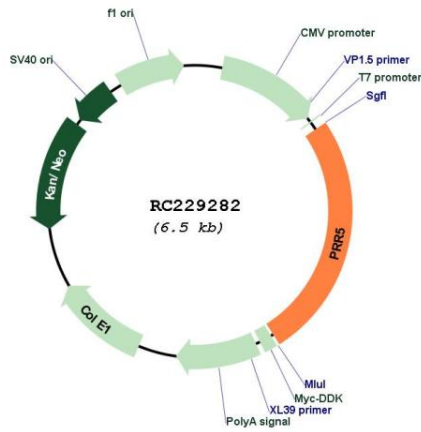
Cytogenetics: 22q13.31

MW: 63.1 kDa

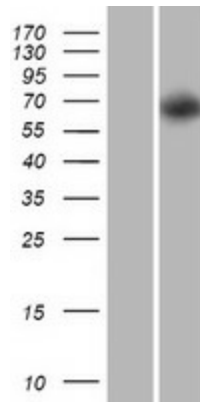
Gene Summary:

The PRR5-ARHGAP8 mRNA is an infrequent but naturally occurring read-through transcript of the neighboring proline rich 5, renal (PRR5) and Rho GTPase activating protein 8 (ARHGAP8) genes. The resulting fusion protein contains sequence identity with each individual gene product, and it includes domains characteristic of a RhoGAP protein. The significance of this read-through transcript and the function of its protein product have not yet been determined. [provided by RefSeq, Nov 2010]

Product images:



Circular map for RC229282



Western blot validation of overexpression lysate (Cat# [LY432300]) using anti-DDK antibody (Cat# [TA50011-100]). Left: Cell lysates from untransfected HEK293T cells; Right: Cell lysates from HEK293T cells transfected with RC229282 using transfection reagent MegaTran 2.0 (Cat# [TT210002]).