

Product datasheet for **RC229273**

ZFP57 (NM_001109809) Human Tagged ORF Clone

Product data:

Product Type:	Expression Plasmids
Product Name:	ZFP57 (NM_001109809) Human Tagged ORF Clone
Tag:	Myc-DDK
Symbol:	ZFP57
Synonyms:	bA145L22; bA145L22.2; C6orf40; TNDM1; ZNF698
Mammalian Cell Selection:	Neomycin
Vector:	pCMV6-Entry (PS100001)
E. coli Selection:	Kanamycin (25 ug/mL)



[View online »](#)

ORF Nucleotide Sequence:

>RC229273 representing NM_001109809
 Red=Cloning site Blue=ORF Green=Tags(s)

TTTTGTAATACGACTCACTATAGGGCGGCCGGAATTCGTCGACTGGATCCGGTACCGAGGAGATCTGCC
 GCC**CGGATCGCC**

ATGTTTGAACAGCTGAAGCCAATCGAACCTGTACAGAAGACGCTCCCATGGGTGGGCGAGGTAGCTGCCA
 CCCTGCAGGAAGCCATGAAGAGAGATTGCTGGAGGGAGGCACGGGTGAAGAAGAAGCCAGTCACCTTTGA
 GGATGTGGCAGTGAATTTACCCAGGAAGAGTGGGACTGTCTAGATGCCAGCCAGAGGGTCTTTACCCAG
 GATGTTATGTCGAAACCTTTAAGAATCTAACATCTGTGGCCAGAATCTTTCTGCATAAGCCAGAGCTAA
 TCACCAAGCTTGAGCAAGAAGAGGAACAGTGGAGAGAGTTGTCCATCTCCCAAACACAGAAGGCCCTTTC
 AGAAGGCAAGAAGAAAGAGCTTCGAGAACAACATCCAGTCTGAGAGATGAGGGGACTAGTGATGACAAG
 GTCTTCCTTGCATGCAGAGGGGCCGCCAGTCCCCCTATCTGCCCCAGCTGGGACTATGGACAGGACCC
 GGGTGCTTCAAGCATCCAGGCTGGGCCACCCTTTTTTGTACACCTGTGGCAAATGTTTCAGCAGGCG
 CTCTACCTCTATAGCCACCACTTTGTTACAATCCCAAGCTGACTAACAGCTGCAGTCAGTGTGGGAAG
 TTGTTTCGGAGCCCCAAGTCCCTCAGCTATCACAGACGCATGCATCTGGGGAGAGGCCCTTCTGTTGCA
 CGCTCTGTGACAAGACCTACTGTGATGCTTCTGGACTAAGTCGTACCGCCGCGTCCATCTGGGTTACCG
 GCCCCATTATGCTCTGTGTGTGGGAAGAGCTTCGGGACCACTGTAGCTCAAACGCCACCAGAAGATA
 CACCAAAACCAGGAGCCAGTGGATGGAACCAGGAGTGTACTTTGAGGATTCCAGGCACCCAGGCTGAAT
 TCCAGACACCCATCGCCAGAAGCCAGAGGTCCATCCAGGGGCTTTTGGATGTGAACCATGCACCACTGGC
 CAGGTCCCAGGAACCCATATTTAGAACTGAGGGTCTATGGCCAGAACCAGGCATCTGTACTTAAGAAC
 CAAGCACCTGTGACCAGGACCCAGGCACCCATCACTGGAACCTCTGTGAGGATGCCAGATCCAACCTCTC
 ATCCAGTGAAGCCCTCAAGACTCAATGTCTTCTGTTGCCCCATTGTTCTTTGACTTTTAGCAAGAAATC
 CTATCTCTCCAGACACCAGAAGGCCACCTCACAGAGCCGCCAACTACTGCTTCCATTGCAGCAAGTCT
 TTCAGCTCATTTTCCAGGCTGGTCAGACACCAGCAGACCCACTGGAAGCAGAAGAGCTACCTTTGCCCTA
 TCTGTGACCTCTCCTTTGGGAGAAAGAGGGCCTTATGGATCACTGGAGGGGCTATAAAGGCAAGGACCT
 GTGCCAGAGCAGCCACCATAATGCCGGGTGATCCTGGGCCAGTGGCTTGGCTTCTCATGATGTCCCC
 ACTATGGCTGGGAGGAATGGAAGCATGGAGGTGATCAATCTCCCCCAGGATCCATACCCCAGGAGAA
 GAGGCCTAAGAGAGAAGGCTGCAAAGGAGACAAAACAAAGGAGGCAGTGAGCATCTTGAACATAAA

ACGCGTACGCGGCCGCTCGAGCAGAACTCATCTCAGAAGAGGATCTGGCAGCAAATGATATCTGGATT
 ACAAGGATGACGACGATAAGGTTTAA

Protein Sequence:

>RC229273 representing NM_001109809
 Red=Cloning site Green=Tags(s)

MFEQLKPIEPVQKTLPWVGEVAATLQEAMKRDCWREARVKKKPVTFEDVAVNFTQEEWDCLDASQRVLYQ
 DVMSETFKNLTSVARIFLHKPELITKLEQEEQWREFVHLPNTEGLSEGKKKELREQHPSLRDEGTSDDK
 VFLACRGAGQCPLSAPAGTMDRTRVLQASQAGPPFFCYTCGKCFRRSYLYSHQFVHNPKLTNSCSQCGK
 LFRSPKLSYHRRMHLGERPFCCTLCDKTYCDASGLSRHRRVHLGYRPHSCSVCGKSFDRDQSELKRHQKI
 HQNQEPVDGNQECTLRIPGTQAEFQTPAIARSQSIQGLLDVNHAPVARSQEPFRTEGPMQNQASVLKN
 QAPVTRTQAPITGTLCDARSNSHPVKPSRLNVFCCPHCSLTFSSKSYLSRHQKAHLTEPPNYCFHCSKS
 FSSFRLVRHQTHWKQSYLCPICDLFSGEKEGLMDHWRGYGKDLQSSHHKCRVILQWLGFSDVDP
 TMAGEEWKHGGDQSPPRIHTPRRRGLREKACKGDKTKEAVSILKHK

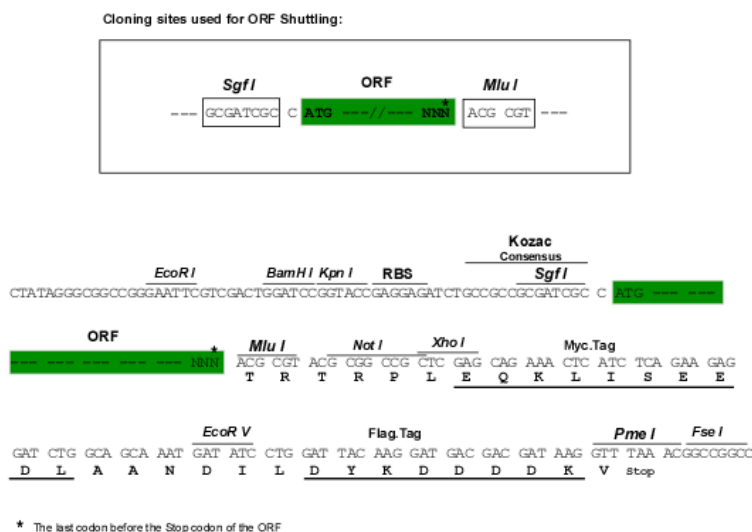
TRTRPLEQKLISEEDLAANDILDYKDDDDKV

Chromatograms:

https://cdn.origene.com/chromatograms/ja1398_h04.zip

Restriction Sites:

Sgfl-MluI

Cloning Scheme:


ACCN: NM_001109809

ORF Size: 1608 bp

OTI Disclaimer: The molecular sequence of this clone aligns with the gene accession number as a point of reference only. However, individual transcript sequences of the same gene can differ through naturally occurring variations (e.g. polymorphisms), each with its own valid existence. This clone is substantially in agreement with the reference, but a complete review of all prevailing variants is recommended prior to use. [More info](#)

OTI Annotation: This clone was engineered to express the complete ORF with an expression tag. Expression varies depending on the nature of the gene.

Components: The ORF clone is ion-exchange column purified and shipped in a 2D barcoded Matrix tube containing 10ug of transfection-ready, dried plasmid DNA (reconstitute with 100 ul of water).

Reconstitution Method:

1. Centrifuge at 5,000xg for 5min.
2. Carefully open the tube and add 100ul of sterile water to dissolve the DNA.
3. Close the tube and incubate for 10 minutes at room temperature.
4. Briefly vortex the tube and then do a quick spin (less than 5000xg) to concentrate the liquid at the bottom.
5. Store the suspended plasmid at -20°C. The DNA is stable for at least one year from date of shipping when stored at -20°C.

RefSeq: [NM_001109809.5](#)

RefSeq ORF: 1611 bp

Locus ID: 346171

UniProt ID: [Q9NU63](#)

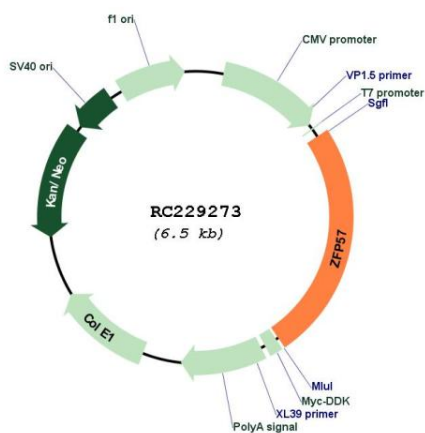
Cytogenetics: 6p22.1

Protein Families: ES Cell Differentiation/IPS

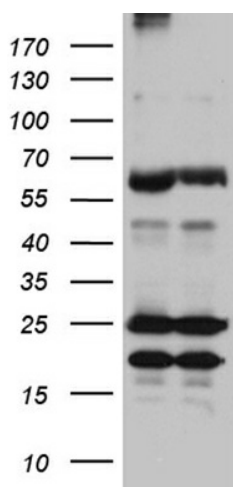
MW: 61.2 kDa

Gene Summary: The protein encoded by this gene is a zinc finger protein containing a KRAB domain. Studies in mouse suggest that this protein may function as a transcriptional repressor. Mutations in this gene have been associated with transient neonatal diabetes mellitus type 1 (TNDM1). [provided by RefSeq, Sep 2009]

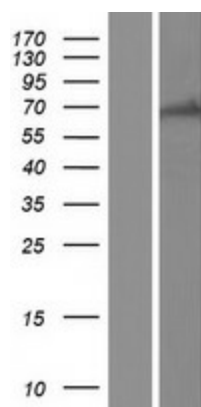
Product images:



Circular map for RC229273



HEK293T cells were transfected with the pCMV6-ENTRY control (Cat# [PS100001], Left lane) or pCMV6-ENTRY ZFP57 (Cat# RC229273, Right lane) cDNA for 48 hrs and lysed. Equivalent amounts of cell lysates (5 ug per lane) were separated by SDS-PAGE and immunoblotted with anti-ZFP57 (Cat# [TA811579])(1:2000). Positive lysates [LY432292] (100ug) and [LC432292] (20ug) can be purchased separately from OriGene.



Western blot validation of overexpression lysate (Cat# [LY432292]) using anti-DDK antibody (Cat# [TA50011-100]). Left: Cell lysates from untransfected HEK293T cells; Right: Cell lysates from HEK293T cells transfected with RC229273 using transfection reagent MegaTran 2.0 (Cat# [TT210002]).