

Product datasheet for **RC229271**

STK35 (NM_080836) Human Tagged ORF Clone

Product data:

Product Type:	Expression Plasmids
Product Name:	STK35 (NM_080836) Human Tagged ORF Clone
Tag:	Myc-DDK
Symbol:	STK35
Synonyms:	CLIK1; STK35L1
Mammalian Cell Selection:	Neomycin
Vector:	pCMV6-Entry (PS100001)
E. coli Selection:	Kanamycin (25 ug/mL)



[View online »](#)

ORF Nucleotide Sequence:

>RC229271 representing NM_080836
 Red=Cloning site Blue=ORF Green=Tags(s)

TTTTGTAATACGACTCACTATAGGGCGGCCGGGAATTCGTCGACTGGATCCGGTACCGAGGAGATCTGCC
 GCC**CGGATCGCC**

ATGGGCCACCAGGAGTCTCCGCTGGCCCGGGCCGGCGGGAGGTGCAGCTTATGTAAGAGGTTATGTA
 AAGGGCTCAGCTGGCGCAACACGTGAAAGCCACGGGAGCCTAGGAGCCAGGCTTCCCCAGCGAGCGC
 CGCGGCAGCAGAAGGATCCGCTACACGCCGGGCTCGGGCCGCACCTCCCAGCTGCTCGGTCCCGGAGG
 CAGCCCGGGCCCGGAGCGGACCATCCCCAGGCAGGGGCTCCAGGGGGAAACGGGCCGCCCGAAGTGA
 GGTGCGCGGGCCAGGTACAATCCAAGTCCGGCTCCTCCGCTCCAGGGCCGGACGGAGGGATGAGGC
 AGGGGGGGCCCGGCAGCGCGTGTCTGCTCCCCCGCCGCCAGCCATGAAACGGGAAGGACGGC
 GCCCGCAGAGGTACAAAAGCCCGAGCGGAAAAGGCGAAGCCAGTGCCCGGGCGCCAGCACGAAGC
 TGAGGCCGGCGGGCGGCCCGGCCATGGATCCGGTGGCGGCCAGGCCCGGGCGAGGCTTCTCTGGC
 GCGGCAGCGCCTGAGGGCGGTGGCGGGTCCGCGCGGCCGCTTACAGCCTGTTGGCGGAGATCGGGCGC
 GCAGCTACGGCTGTGTTTATGAGGCAGTGGCCGGCGCAGCGGGGCCCGGGTGGCGGTCAAGAAGATCC
 GCTGCGACGCCCCGAGAACGTGGAGCTGGCGTGGCTGAATTCTGGGCCCTCACCAGCCTCAAGCGGCG
 CCACCAGAACGTCGTGCAGTTTGAAGAGTGCCTCCTGCAGCGCAATGGGTTAGCCAGCGCATGAGTCAC
 GGCAACAAGAGCTCGCAGCTTACCTGCGCCTGGTGGAGACCTCGCTGAAAGGAGAAAGGATCCTGGGTT
 ATGCTGAGGAGCCCTGCTATCTCTGTTTGTATGGAGTCTGTGAAGGTGGAGACCTGAATCAGTATGT
 CCTGTCCCGGAGGCCAGCCAGCCACCAACAAAAGTTTCATGCTACAGCTGACGAGCGCCATTGCCTTC
 CTGCACAAAACCATATTGTGCACAGGGACCTGAAGCCAGACAACATCCTCATCAGAGCGGTCTGGCA
 CCCCCATCCTCAAAGTGGCCGACTTTGGACTAAGCAAGTCTGTGCTGGGCTGGCACCCCGAGGCAAGA
 GGGCAATCAAGACAACAAAATGTGAATGTGAATAAGTACTGGCTGTCTCAGCCTGCGGTTCCGACTTC
 TACATGGCTCCTGAAGTCTGGGAGGACACTACACAGCCAAGGCGGACATCTTTGCCCTGGGCATTATCA
 TCTGGGAATGATAGAAAGAATCACTTTTATTGACTCTGAGACCAAGAAGGAGCTCCTGGGGACCTACAT
 TAAACAGGGGACTGAGATCGTCCCTGTTGGTGGAGCGCTGCTAGAAAACCCAAAGATGGAGTTGCACATC
 CCCAAAACGCAGGACTTCCATGTCTGAGGGGATCAAGCAGCTCTTGAAGATATGTTAGCTGCTAACC
 CACAGGACCGCCTGATGCCTTTGAAGTGAACCAGAATGGACCAGTACATGTGCTGCT

ACGCGTACGCGGCCGCTCGAGCAGAACTCATCTCAGAAGAGGATCTGGCAGCAAATGATATCCTGGATT
 ACAAGGATGACGACGATAAGGTTTAA

Protein Sequence:

>RC229271 representing NM_080836
 Red=Cloning site Green=Tags(s)

MGHQESPLARAPAGGAAYVKRLCKGLSWREHVESHGSLGAQASPASAAAEGSATRRARAATSRAARSRR
 QPGPGADHPQAGAPGGKRAARKWRCAGQVTIQGPAPPRPRAGRRDEAGGARAAPLLLPPPPAAMETGKDG
 ARRGTQSPERKRRSPVPRAPSTKLRPAAAARAMDPVAAEAPGEAFLARRRPEGGGGSARPRYSLLAEIGR
 GSYGVVVEAVAGRSGARVAVKKIRCDAPENVELALAEFWALTSLKRRHQNVVQFEECVLQRNGLAQRMSH
 GNKSSQLYLRLVETSLKGERILGYAEPCYLWFVMEFCEGGDLNQYVLSRRPDPATNKSFMLQLTSAIAF
 LHKNHIVHRDLKPDNILITERSGTPILKVADFGLSKVCAGLAPRGKEGNQDNKNVNVNKYWLSSACGSDF
 YMAPEVWEGHYTAKADIFALGIIWAMIERITFIDSETKKELLGTYIKQGTETIVPVGELLENPKMELHI
 PQKRRTSMSEGIKQLLKDMLAANPQDRPDAFELETRMDQVTCAA

TRTRPLEQKLISEEDLAANDILDYKDDDDKV

Chromatograms:

https://cdn.origene.com/chromatograms/mg4108_a01.zip

Restriction Sites:

Sgfl-Mlul

Cloning Scheme:


ACCN: NM_080836

ORF Size: 1602 bp

OTI Disclaimer: The molecular sequence of this clone aligns with the gene accession number as a point of reference only. However, individual transcript sequences of the same gene can differ through naturally occurring variations (e.g. polymorphisms), each with its own valid existence. This clone is substantially in agreement with the reference, but a complete review of all prevailing variants is recommended prior to use. [More info](#)

OTI Annotation: This clone was engineered to express the complete ORF with an expression tag. Expression varies depending on the nature of the gene.

Components: The ORF clone is ion-exchange column purified and shipped in a 2D barcoded Matrix tube containing 10ug of transfection-ready, dried plasmid DNA (reconstitute with 100 ul of water).

- Reconstitution Method:**
1. Centrifuge at 5,000xg for 5min.
 2. Carefully open the tube and add 100ul of sterile water to dissolve the DNA.
 3. Close the tube and incubate for 10 minutes at room temperature.
 4. Briefly vortex the tube and then do a quick spin (less than 5000xg) to concentrate the liquid at the bottom.
 5. Store the suspended plasmid at -20°C. The DNA is stable for at least one year from date of shipping when stored at -20°C.

Note: Plasmids are not sterile. For experiments where strict sterility is required, filtration with 0.22um filter is required.

RefSeq: [NM_080836.4](#)

RefSeq ORF: 1605 bp

Locus ID: 140901

UniProt ID: [Q8TDR2](#)

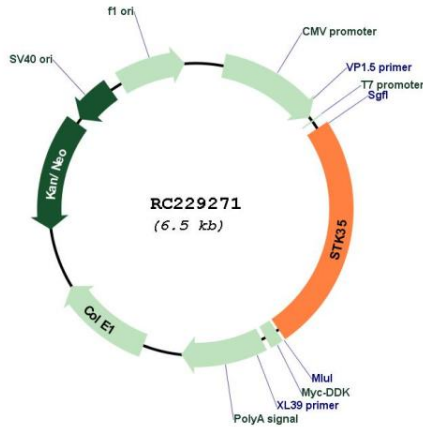
Cytogenetics: 20p13

Protein Families: Druggable Genome, Protein Kinase

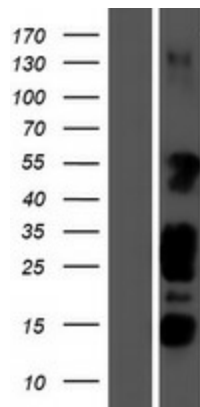
MW: 57.9 kDa

Gene Summary: The protein encoded by this gene is a kinase that is predominantly found in the nucleus. However, it can interact with PDLIM1/CLP-36 in the cytoplasm and localize to actin stress fibers. The encoded protein may be a regulator of actin stress fibers in nonmuscle cells. [provided by RefSeq, Jul 2008]

Product images:



Circular map for RC229271



Western blot validation of overexpression lysate (Cat# [LY432290]) using anti-DDK antibody (Cat# [TA50011-100]). Left: Cell lysates from untransfected HEK293T cells; Right: Cell lysates from HEK293T cells transfected with RC229271 using transfection reagent MegaTran 2.0 (Cat# [TT210002]).