

## Product datasheet for **RC229267**

### **GADL1 (NM\_207359) Human Tagged ORF Clone**

#### **Product data:**

Product Type:	Expression Plasmids
Product Name:	GADL1 (NM_207359) Human Tagged ORF Clone
Tag:	Myc-DDK
Symbol:	GADL1
Synonyms:	ADC; CSADC; HuADC; HuCSADC
Mammalian Cell Selection:	Neomycin
Vector:	pCMV6-Entry (PS100001)
E. coli Selection:	Kanamycin (25 ug/mL)



[View online »](#)

**ORF Nucleotide Sequence:**

>RC229267 representing NM\_207359  
 Red=Cloning site Blue=ORF Green=Tags(s)

TTTTGTAATACGACTCACTATAGGGCGGCCGGAATTCGTCGACTGGATCCGGTACCGAGGAGATCTGCC  
 GCC**GCGATCGCC**

ATGAGCAGCGACTCGGACCAGTGTCTGTGGACGGAGATATTGATCAACAAGAGATGATTCCAAGTA  
 AGAAGAATGCTGTTCTTGTGGATGGGGTTGTGCTGAATGGTCTACAACAGATGCAAAAGCTGGAGAAAA  
 ATTTGTTGAAGAGGCCTGTAGGCTAATAATGGAAGAGGTGGTTTTGAAAGCTACAGATGTCAATGAGAAG  
 GTGTGTGAATGGAGGCCTCTGAACAACGAAACAGCTTCTTGATTTGGAGATGAGAGACTCAGGCGAGC  
 CACCCATAAACTATTGGAACCTGTCTGGGATGTCATACACTACAGTGTCAAACTAACCACCCAAGATT  
 TTTCAACCAATTGTATGCTGGACTTGATTACTCTTGGTGGCCGATTTATGACCGAAGCATTGAAT  
 CCAAGTGTATACGTATGAGGTGTCCCAGTGTCTGTAGTGAAGAAGCGGTTCTGAAGAAAAATGA  
 TTGAATTTATTGGCTGGAAGAAGGGGATGGAATATTTAACCCAGGTGGCTCAGTGTCCAATATGTATGC  
 AATGAATTTAGCTAGATACAAATATTGCTCTGATATTAAGGAAAAGGGGCTGTCTGGTTCGCAAGATTA  
 ATCCTTTTACATCTGCAGAGTGTCACTACTCTATGAAGAAGGCAGCCTCTTTTCTGGGATTGGCACTG  
 AGAATGTTTGCTTTGTGGAAACAGATGGAAGAGGTAATAATGATACCTGAGGAACTGGAGAAGCAAGTCTG  
 GCAAGCCAGAAAAGAGGGGGCAGCACCGTTTCTTGTCTGTGCCACTTCTGGTACAACCTGTGTTGGGAGCT  
 TTTGACCTCTGGATGAAATAGCAGACATCTGCGAGAGGCACAGCCTCTGGCTTCATGTAGATGCTTCTT  
 GGGGTGGCTCAGCTTTGATGTCGAGGAAGCACCACAAGCTTCTGCATGGCATCCACAGGGCTGACTCTGT  
 GGCCTGGAACCCACACAAGATGCTGATGGCTGGGATCCAGTGTGTGCTCCTTGTGAAAGACAAATCT  
 GATCTTCTTAAAAATGCTACTCTGCCAAGGCATCTTACCTCTCCAGCAGGATAAATCTATGATGTGA  
 GCTATGACACAGGAGACAAGTCTATCCAGTGTAGCAGAAGACCAGATGCATTCAAGTTCTGGATGACCTG  
 GAAGGCCCTGGGTACATTAGGCCTTGAAGAAGAGTTAATCGTGTCTTGTCTTTATCTAGGTACCTAGTA  
 GATGAAATCAAGAAAAGAGAAGGATTCAAGTTACTGATGGAACCTGAATATGCCAATATTTGCTTTTGGT  
 ACATTCCACCGAGCCTCAGAGAGATGGAAGAAGGACCCGAGTTCTGGGCAAACTAATTTGGTGGCCCC  
 AGCCATTAAGGAGAGGATGATGAAGAAGGAAGCTTGTGCTGGGCTACCAGCCGACCGGGGAAAGGTC  
 AACTTCTCCGCCAGGTGGTGTAGCCCTCAAGTGAAGCCGGGAGGACATGGACTTCTCTGGATGAGA  
 TAGACTTACTGGGTAAGACATG

**ACGCGT**ACGCGGCCGCTCGAGCAGAACTCATCTCAGAAGAGGATCTGGCAGCAAATGATATCTGGATT  
 ACAAGGATGACGACGATAAGGTTTAA

**Protein Sequence:**

>RC229267 representing NM\_207359  
 Red=Cloning site Green=Tags(s)

MSSDSRQCPVDGDIDQEMIPSKNAVLVDGVVNLGPTTDAKAGEKFVEEACRLIMEEVLKATDVNEK  
 VCEWRPPEQLKQLLDLEMRDSGEPHKLLEL.CRDVIHYSVKTNHPRFFNQLYAGLDYYSLVARFMTEALN  
 PSVYTYEVSPVFLVVEEAVLKKMIEFIGWKEGDGIFNPGGSVSNMYAMNLARYKYCPDIKEKLSGSPRL  
 ILFTSAECHYSMKKAASFLLGIGTENVCVFETDGRGKMIPEELEKQVWQARKEGAAPFLVCATSGTTVLGA  
 FDPLDEIADICERHSLWLHVDASWGSALMSRKHRLKLLHGIHRADSVAWNPHKMLMAGIQCCALLVKDKS  
 DLLKKCYSAKASYLFQQDKFYDVSYDTGDKSIQCSRRPDAFKFWMWKALGTLGLEERVNRLALSRYLV  
 DEIKKREGFKLLMEPEYANICFWYIPPSLREMEEGPEFWAKLNLVAPAIKERMKKGSLMLGYQPHRGKV  
 NFFRQVVISPVQVSREDMDFLLDEIDLLGKDM

**TRTRPLEQKLI**SEEDLAANDILDYKDDDDKV

**Chromatograms:**

[https://cdn.origene.com/chromatograms/mk8065\\_c07.zip](https://cdn.origene.com/chromatograms/mk8065_c07.zip)

**Restriction Sites:**

Sgfl-Mlul

**Cloning Scheme:**


**ACCN:** NM\_207359

**ORF Size:** 1563 bp

**OTI Disclaimer:** The molecular sequence of this clone aligns with the gene accession number as a point of reference only. However, individual transcript sequences of the same gene can differ through naturally occurring variations (e.g. polymorphisms), each with its own valid existence. This clone is substantially in agreement with the reference, but a complete review of all prevailing variants is recommended prior to use. [More info](#)

**OTI Annotation:** This clone was engineered to express the complete ORF with an expression tag. Expression varies depending on the nature of the gene.

**Components:** The ORF clone is ion-exchange column purified and shipped in a 2D barcoded Matrix tube containing 10ug of transfection-ready, dried plasmid DNA (reconstitute with 100 ul of water).

**Reconstitution Method:**

1. Centrifuge at 5,000xg for 5min.
2. Carefully open the tube and add 100ul of sterile water to dissolve the DNA.
3. Close the tube and incubate for 10 minutes at room temperature.
4. Briefly vortex the tube and then do a quick spin (less than 5000xg) to concentrate the liquid at the bottom.
5. Store the suspended plasmid at -20°C. The DNA is stable for at least one year from date of shipping when stored at -20°C.

**RefSeq:** [NM\\_207359.2](#), [NP\\_997242.2](#)

**RefSeq ORF:** 1566 bp

**Locus ID:** 339896

**UniProt ID:** [Q6ZQY3](#)

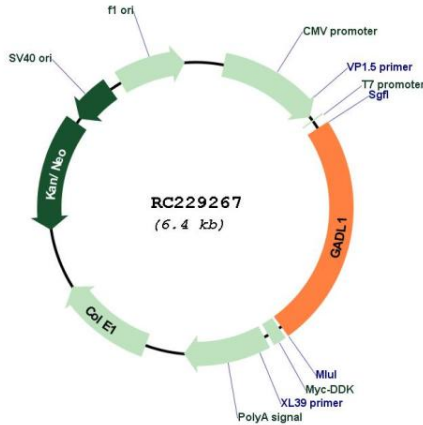
**Cytogenetics:** 3p24.1-p23

**Protein Families:** Druggable Genome

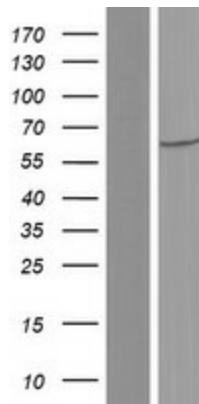
**MW:** 59.1 kDa

**Gene Summary:** May catalyze the decarboxylation of L-aspartate, 3-sulfinyl-L-alanine (cysteine sulfinic acid), and L-cysteate to beta-alanine, hypotaurine and taurine, respectively. Does not exhibit any decarboxylation activity toward glutamate.[UniProtKB/Swiss-Prot Function]

**Product images:**



Circular map for RC229267



Western blot validation of overexpression lysate (Cat# [LY432286]) using anti-DDK antibody (Cat# [TA50011-100]). Left: Cell lysates from untransfected HEK293T cells; Right: Cell lysates from HEK293T cells transfected with RC229267 using transfection reagent MegaTran 2.0 (Cat# [TT210002]).