

Product datasheet for **RC229261**

Estrogen Related Receptor beta (ESRRB) (NM_004452) Human Tagged ORF Clone

Product data:

Product Type:	Expression Plasmids
Product Name:	Estrogen Related Receptor beta (ESRRB) (NM_004452) Human Tagged ORF Clone
Tag:	Myc-DDK
Symbol:	Estrogen Related Receptor beta
Synonyms:	DFNB35; ERR2; ERRb; ERR beta-2; ERRbeta2; ESRL2; NR3B2
Mammalian Cell Selection:	Neomycin
Vector:	pCMV6-Entry (PS100001)
E. coli Selection:	Kanamycin (25 ug/mL)



[View online »](#)

ORF Nucleotide Sequence:

>RC229261 representing NM_004452
 Red=Cloning site Blue=ORF Green=Tags(s)

TTTTGTAATACGACTCACTATAGGGCGGCCGGAATTCGTCGACTGGATCCGGTACCGAGGAGATCTGCC
 GCC**CGCATCGCC**

ATGTCCTCGGACGACAGGCACCTGGGCTCCAGCTGCGGCTCCTTCATCAAGACTGAGCCGTCAGCCCGT
 CCTCGGGCATCGATGCCCTCAGCCACCACAGCCCAAGTGGCTCGTCCGACGCCAGCGGCGCTTTGGCCT
 GGCCCTGGGACCCACGCCAACGGTCTGGACTCGCCACCCATGTTTGCAGGCGCCGGGCTGGGAGGCACC
 CCATGCCCAAGAGCTACGAGGACTGTGCCAGCGGCATCATGGAGGACTCGGCCATCAAGTGCGAGTACA
 TGCTCAACGCCATCCCCAAGCGCTGTGCCTCGTGTGCGGGGACATTGCCTCTGGCTACCACTACGGCGT
 GGCCTCTGCGAGGCTTGAAGGCCTTCTCAAGAGGACTATCCAAGGGAACATTGAGTACAGCTGCCCCG
 GCCACCAACGAGTGCAGATCACCAACGGAGGCGCAAGTCTGCCAGGCTGCCGCTTCATGAAATGCC
 TCAAAGTGGGGATGCTGAAGGAAGGTGTGCGCCTTGATCGAGTGGTGGAGGCCGTGAGAAATACAAGCG
 ACGGCTGGACTCAGAGAGCAGCCATACCTGAGCTTACAAATTTCTCCACCTGCTAAAAAGCCATTGACC
 AAGATTGTCTCATACCTACTGGTGGCTGAGCCGACAAGCTCTATGCCATGCCTCCCCCTGGTATGCCTG
 AGGGGGACATCAAGGCCCTGACCACTCTCTGTGACCTGGCAGACCAGAGCTTGTGGTATCATTGGCTG
 GGCCAAGCACATCCCAGGCTTCTCAAGCCTCTCCCTGGGGGACCAGATGAGCCTGCTGCAGAGTGCCTGG
 ATGAAATCCTCATCCTGGGCATCGTGTACCGCTCGTGCCTATGACGACAAGCTGGTGTACGCTGAGG
 ACTACATCATGGATGAGGAGCACTCCCAGCTCGCGGGGCTGTGGAGCTTACCGGGCCATCCTGCAGCT
 GGTACGCAAGTACAAGAAGCTCAAGGTGGAGAAGGAGGAGTTTGTGACGCTCAAGGCCCTGGCCCTCGCC
 AACTCCGATTCATGTACATCGAGGATCTAGAGGCTGTCCAGAAGCTGCAGGACCTGCTGCAGAGGCAC
 TGCAGGACTACGAGCTGAGCCAGCGCCATGAGGAGCCCTGGAGGACGGCAAGCTGCTGCAGACTGCC
 GCTGCTGCGGCAGACGGCCGCAAGGCCGTGACGCACTTCTATAGCGTCAAAGTGCAGGGCAAAGTGCC
 ATGCACAAACTCTTCTGGAGATGCTGGAGGCCAAGGTTGGCCAAGAGCAGCTTAGAGGATCTCCCAAGG
 ATGAAAGAATGTCAAGCCATGATGGAAAATGCCCTTCCAATCAGCTGCCTTACAAGCAGGGATCAGAG
 CAACTCCCGGGGATCCCAATCCACGCCCTTCTAGTCCAACCCCTCAATGAGAGAGGCAGGCAGATC
 TCACCCAGCACTAGGACACCAGGAGGCCAGGAAAGCATCTCTGGCTCACCATG

ACGCGTACGCGGCCGCTCGAGCAGAAACTCATCTCAGAAGAGGATCTGGCAGCAAATGATATCCTGGATT
 ACAAGGATGACGACGATAAGGTTTAA

Protein Sequence:

>RC229261 representing NM_004452
 Red=Cloning site Green=Tags(s)

MSSDRHLGSSCGSFIKTEPSSPSSGIDALSHSPSGSSDASGGFGLALGTHANGLDSPPMFAGAGLGGT
 PCRKSYEDCASGIMEDSAIKCEYMLNAIPKRLCLVCGDIASGYHYGVASCEACKAFFKRTIQGNIIEYSCP
 ATNECEITKRRRSCQACRFMKCLKVGMKEGVRLDRVRGGRQYKRRLDSESSPYLSLQISPPAKKPLT
 KIVSYLLVAEPDKLYAMPPPGMPEGDIKALTTLCDLADRELVVIGWAKHIPGFSSLSLGDQMSLLQSAW
 MEILILGIVYRSLPYDDKLVYAEDYIMDEEHSRLAGLLELYRAILQLVRRYKCLKVEKEEFVTLKALALA
 NSDSMYIEDLEAVQKLQDLLHEALQDYELQRHEEPWRTGKLLLTLPLLRQTAAKAVQHFYSVKLQKVP
 MHKLFLEMLEAKVGQEQLRGSPKDERMSSHDGKCPFQSAFTSRDQSNSPGIPNPRPSSPTPLNERGRQI
 SPSTRTPGGQKHLWLTM

TRTRPLEQKLISEEDLAANDILDYKDDDDKV

Chromatograms:

https://cdn.origene.com/chromatograms/mk8064_c02.zip

Restriction Sites:

SgfI-MluI

Cloning Scheme:


ACCN: NM_004452

ORF Size: 1524 bp

OTI Disclaimer: The molecular sequence of this clone aligns with the gene accession number as a point of reference only. However, individual transcript sequences of the same gene can differ through naturally occurring variations (e.g. polymorphisms), each with its own valid existence. This clone is substantially in agreement with the reference, but a complete review of all prevailing variants is recommended prior to use. [More info](#)

OTI Annotation: This clone was engineered to express the complete ORF with an expression tag. Expression varies depending on the nature of the gene.

Components: The ORF clone is ion-exchange column purified and shipped in a 2D barcoded Matrix tube containing 10ug of transfection-ready, dried plasmid DNA (reconstitute with 100 ul of water).

Reconstitution Method:

1. Centrifuge at 5,000xg for 5min.
2. Carefully open the tube and add 100ul of sterile water to dissolve the DNA.
3. Close the tube and incubate for 10 minutes at room temperature.
4. Briefly vortex the tube and then do a quick spin (less than 5000xg) to concentrate the liquid at the bottom.
5. Store the suspended plasmid at -20°C. The DNA is stable for at least one year from date of shipping when stored at -20°C.

RefSeq: [NM_004452.4](#)

RefSeq ORF: 1527 bp

Locus ID: 2103

UniProt ID: [O95718](#)

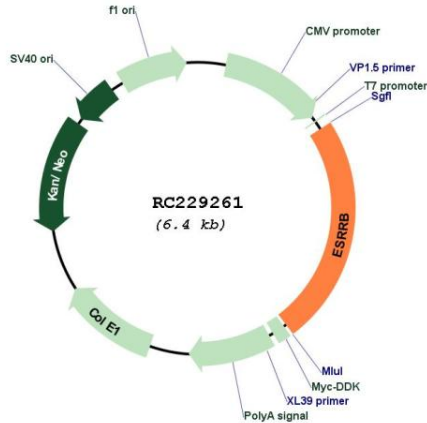
Cytogenetics: 14q24.3

Protein Families: Druggable Genome, Nuclear Hormone Receptor, Transcription Factors

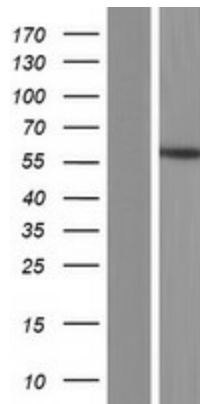
MW: 56 kDa

Gene Summary: This gene encodes a protein with similarity to the estrogen receptor. Its function is unknown; however, a similar protein in mouse plays an essential role in placental development. [provided by RefSeq, Jul 2008]

Product images:



Circular map for RC229261



Western blot validation of overexpression lysate (Cat# [LY432280]) using anti-DDK antibody (Cat# [TA50011-100]). Left: Cell lysates from untransfected HEK293T cells; Right: Cell lysates from HEK293T cells transfected with RC229261 using transfection reagent MegaTran 2.0 (Cat# [TT210002]).