

Product datasheet for **RC229260**

UAP1L1 (NM_207309) Human Tagged ORF Clone

Product data:

Product Type:	Expression Plasmids
Product Name:	UAP1L1 (NM_207309) Human Tagged ORF Clone
Tag:	Myc-DDK
Symbol:	UAP1L1
Mammalian Cell Selection:	Neomycin
Vector:	pCMV6-Entry (PS100001)
E. coli Selection:	Kanamycin (25 ug/mL)



[View online »](#)

ORF Nucleotide Sequence:

>RC229260 representing NM_207309
 Red=Cloning site Blue=ORF Green=Tags(s)

TTTTGTAATACGACTCACTATAGGGCGGCCGGGAATTCGTCGACTGGATCCGGTACCGAGGAGATCTGCC
 GCC**CGCATCGCC**

ATGGCTTCGGAGCAGGACGTGCGCGCCCGCTGCAGCGCTGGCCAGGAGCACCTCTGCGCTTCTGGG
 CCGAGCTGGCGCCGGAGCCACGAGCCGCGCTGCTGGCGGAGCTGGCGCTGCTGGAGCCCGAGGCGCTGCG
 CGAGCACTGCCGGCGGGCGGGAGGCCTGCGCGCGCCCCACGCCCCGCGCCGACTTGGCCGCGCGC
 CTGCGGCCCTGCCCCAGAGCGCGTGGGAGGGCCAGCCGACGCGACCCGAGACACGGCGCGCTGGG
 AGGAGGAAGTTTCCGTCAAGTTTCTCTGAACAAGGTGGCCGCTCTGCTGCTGGTGGGGGCGAGGGCAC
 TCGCTGGGCGTGACCTACCCCAAGGTATGTACCGTGTGGGGCTGCCAGCCGGAAGACCTGTACCAG
 CTGCAGGCGGAGCGGATTCCGGCGGTGGAGCAGCTGGCCGCTGAGCGCCACGGGACCCGCTGCACCGTCC
 CCTGGTACGTATGACCAGCGAGTTCACCTCTGGGGCCACGGCCGAGTTCTTCAAGGAGCACAATCTT
 CCACCTGGACCCGCCAACGTGGTCACTGTTTGTGAGCAGCGCTGCTGCCTGCTGTGACCTTTGATGGCAAG
 GTTATCTGGAGCGGAAAAGACAAAGTTGCCATGGCCCCAGACGGCAACGGGGGCCTACTGCGCGCTGG
 AGGACCACAAGATCCTGGAGGACATGGAGCGCCGGGAGTGGAGTTTGTGCACGTGTACTGTGTGGACAA
 CATCCTGGTGGGCTGGCGGACCCTGTCTTATCGGCTTCTGTGTGTTGCAGGGCGCAGACTGTGGCGCC
 AAGGTGGTGGAAAAGGCATACCCCGAGGAGCCCGTGGGCGTGGTGTGCCAGTGGACGGTGTCCCCAGG
 TGGTGGAGTACAGCGAGATCAGTCTGAGACCGCACAGCTACGTGCCTCCGACGGGAGCCTGTGTACAA
 TGCAGGCAACATCTGCAACCACTTCTTACCCGAGGCTTCTTAAAGGCGTACCAGGGAGTTTGTAGCCT
 TTGCTGAAGCCACACGTGGTGTGAAGAAGTCCCGTATGTGGATGAGGAGGGGAATCTGGTAAAGCCGC
 TAAACCGAACCGGATAAAGATGGAGAAGTTTGTGTTTGTGTTTCCGTTTGTGAAGAACTTTGCTGC
 CTTGGAAGTGTGCGGGAGGAGGAATTTCCCACTGAAGAACGACAGCCAGCCGACAGGGACAGTCCC
 CGCACCGCTCGCCAGGCCCTGCTCACCCAGCACTACCGGTGGGCTCTGCGGGCCGGGGCCGCTTCTGG
 ATGCCATGGGGCTGGCTCCCAGAGCTGCCAGCTTGCCCCAAATGGAGACCTCCGGCCATCTGTGA
 GATATCGCCCTTGGTGTCTTACTCTGGAGAGGTTTGAAGTGTACCTGCAAGGCCGGGAGTTCCAGTCC
 CCGCTCATCTGGATGAAGACCAGGCCAGGAGCCGACGCTGCAGGAGTCC

ACGCGTACGCGGCCGCTCGAGCAGAACTCATCTCAGAAGAGGATCTGGCAGCAAATGATATCTGGATT
 ACAAGGATGACGACGATAAGGTTTAA

Protein Sequence:

>RC229260 representing NM_207309
 Red=Cloning site Green=Tags(s)

MASEQDVRARLQRAGQEHLRFWAELAPEPRAALLAELALLEPEALREHCRRAEACARPHGPPDLAAR
 LRPLPPERVGRASRSDPETRRRWEIEGFRQISLNKVAVLLLAGGQGTRLGVTYPKGMYRVGLPSRKTLYQ
 LQAERIRRVEQLAGERHGTRCTVPWYVMTSEFTLGPTAEFFREHNFHLDPANVMFEQRLLPAVTFDGG
 VILERKDKVAMAPDNGGLYCALDHKILEDMERRGVEFVHVYCVNIVRLADPVFIFGCVLQGADCGA
 KVVEKAYPEEPVGVVQVDGVPQVVEYSEISPETAQLRASDGSLLYNAGNICNHFFTRGFLKAVTREFEP
 LLKPHVAVKVPYVDEEENLVKPLKPNIGKMEKVFVDFVRFKNFAALEVLREEEFSPKNAEPADRDS
 RTARQALLTQHYRWALRAGARFLDAHGAWLPELPSLPPNGDPPAICEISPLVSYSGEGLEVYLQGREFQS
 PLILDEDQAREPQLQES

TRTRPLEQKLISEEDLAANDILDYKDDDDKV

Chromatograms:

https://cdn.origene.com/chromatograms/mk8036_a07.zip

Restriction Sites:

Sgfl-MluI

Cloning Scheme:


ACCN: NM_207309

ORF Size: 1521 bp

OTI Disclaimer: The molecular sequence of this clone aligns with the gene accession number as a point of reference only. However, individual transcript sequences of the same gene can differ through naturally occurring variations (e.g. polymorphisms), each with its own valid existence. This clone is substantially in agreement with the reference, but a complete review of all prevailing variants is recommended prior to use. [More info](#)

OTI Annotation: This clone was engineered to express the complete ORF with an expression tag. Expression varies depending on the nature of the gene.

Components: The ORF clone is ion-exchange column purified and shipped in a 2D barcoded Matrix tube containing 10ug of transfection-ready, dried plasmid DNA (reconstitute with 100 ul of water).

Reconstitution Method:

1. Centrifuge at 5,000xg for 5min.
2. Carefully open the tube and add 100ul of sterile water to dissolve the DNA.
3. Close the tube and incubate for 10 minutes at room temperature.
4. Briefly vortex the tube and then do a quick spin (less than 5000xg) to concentrate the liquid at the bottom.
5. Store the suspended plasmid at -20°C. The DNA is stable for at least one year from date of shipping when stored at -20°C.

Note: Plasmids are not sterile. For experiments where strict sterility is required, filtration with 0.22um filter is required.

RefSeq: [NM_207309.3](#)

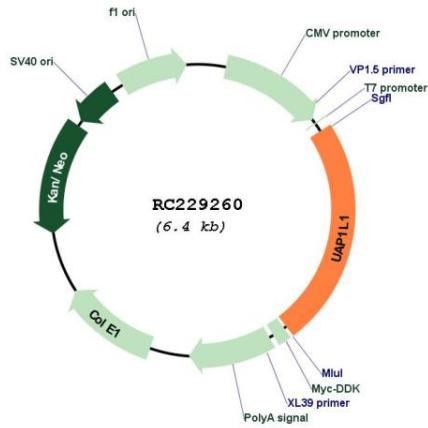
RefSeq ORF: 1524 bp

Locus ID: 91373

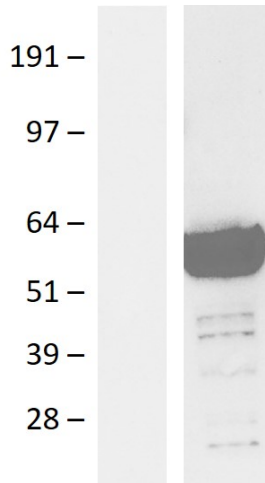
UniProt ID: [Q3KQV9](#)

Cytogenetics: 9q34.3
 MW: 56.8 kDa

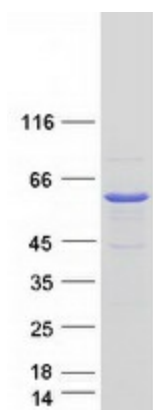
Product images:



Circular map for RC229260



Western blot validation of overexpression lysate (Cat# [LY432279]) using anti-DDK antibody (Cat# [TA592569]). Left: Cell lysates from untransfected HEK293T cells; Right: Cell lysates from HEK293T cells transfected with RC229260 using transfection reagent PEI.



Coomassie blue staining of purified UAP1L1 protein (Cat# [TP329260]). The protein was produced from HEK293T cells transfected with UAP1L1 cDNA clone (Cat# RC229260) using MegaTran 2.0 (Cat# [TT210002]).