

## Product datasheet for **RC229255**

### **AGBL4 (NM\_032785) Human Tagged ORF Clone**

#### **Product data:**

Product Type:	Expression Plasmids
Product Name:	AGBL4 (NM_032785) Human Tagged ORF Clone
Tag:	Myc-DDK
Symbol:	AGBL4
Synonyms:	CCP6
Mammalian Cell Selection:	Neomycin
Vector:	pCMV6-Entry (PS100001)
E. coli Selection:	Kanamycin (25 ug/mL)



[View online »](#)

**ORF Nucleotide Sequence:**

>RC229255 representing NM\_032785  
 Red=Cloning site Blue=ORF Green=Tags(s)

TTTTGTAATACGACTCACTATAGGGCGGCCGGAATTCGTCGACTGGATCCGGTACCGAGGAGATCTGCC  
 GCC**CGGATCGCC**

ATGGCGGAGGGGAGCCAGTCGGCGCCTGAGGCAGCAATGATATGGGAAATGATGATGCCATTGGAGGGA  
 ATGTGAGCAAATATATAGTGCTTCCAACCTGGCTATTGTGGACAGCCCAAGAAAGGACATCTTATCTTTGA  
 TGCTTGCTTTGAAAGTGTAACCTGGGCGGGTGGACCAGGTCTCTGAGTTTGAGTATGATCTGTTTCATT  
 AGGCCGGACACCTGTAATCCACGCTTCCGAGTCTGGTTCAACTTTACTGTTGAAAATGTGAAAGAATCAC  
 AGAGGGTCATTTTCAACATTGTTAACTTCAGTAAACCAAGAGTCTCTATAGAGATGGGATGGCCCTAT  
 GGTGAAATCTACCAGCAGACAAAATGGCAAAGGCTGCCACCCAAAATGTTTACTACTACCGCTGCCCG  
 GACCATAGGAAGAACTATGTGATGTCCTTTGCCTTTTGTGTTGACCGAGAAGAAGATATTTACCAGTTG  
 CTTACTGCTACCCATATACATACACTCGCTTCCAACATTACCTTGACAGCCTGCAAAAGAGAAACATGGA  
 TTACTTCTTTGCGGAGCAGCTGGCCAGAGTGTGCAACAACGAAAGCTTGACCTCCTGACGATAACCAGC  
 CCTGACAAATCTCCGGAAGGGGAGAGCAGAAGGTGGTATTCATCACAGGACGAGTCCACCCAGGGGAAA  
 CACCCTCATCATTGTGTGCAAGGGATCATTGACTTCCTTGAAGCCAGCACCTATTGCCTGTGTCTCT  
 CCGGGAATACCTGGTCTTCAAGATCGCACCAATGCTCAATCCTGATGGAGTCTACCTGGGCAATTACAGG  
 TGTTCTCTGATGGGATTTGATCTGAATCGTCACTGGCTGGATCCCTCTCCATGGGTCCATCTACCTGC  
 ATGGAGTGAAACAACATCGTCCAGATGTACAACGACCCAAAACAAGCCTGGAGTTTTATATTGACAT  
 CCATGCCCACTCCACCATGATGAATGGCTTCATGTATGGCAACATCTTTGAGGATGAGGAACGGTCCAG  
 AGGCAGGCCATTTTCCAAGCTCCTCTGCCAGAATGCTGAGGACTTCTCCTATTCCAGCACACTTCTTATG  
 ACCGGGACGCTGTGAAAGCAGGAACTGGCCGCTCGCTTCTCGTGGACTCCTGGACCACACTTCTTATTG  
 CTACACCCTAGAGGTCTCCTTCTACAGCTACATCATCAGTGGCACCAGGCTGCTGTGCCCTACACTGAA  
 GAAGCCTATATGAAGCTGGGCGGAATGTGCAAGAACCTTTTTGGACTATTATCGGCTGAACCCGTGG  
 TTGAAAAGGTGGCAATCCCATGCCGAGACTGCGAAAATAAGAAATAGAAGTCCAGAGAAGGAAAGAAAA  
 ATCCCCTCCTTACAAGCACCCACTCCTGCGGGGCCAGCCAGCAACTACCCCAACAGCAAAGGGGACAAG  
 AAGAGCTCAGTGAACCACAAAGACCTTCAACCCCTTTT

**ACGCGT**ACGCGGCCGCTCGAGCAGAAACTCATCTCAGAAGAGGATCTGGCAGCAAATGATATCCTGGATT  
 ACAAGGATGACGACGATAAGGTTTAA

**Protein Sequence:**

>RC229255 representing NM\_032785  
 Red=Cloning site Green=Tags(s)

MAEGSQSAPEAGNDMGNDDAIGGNVSKYIVLPTGYCGQPKKGLIFDACFESGNLGRVDQVSEFEYDLFI  
 RPDTCNPRFRVFNFTVENVKESQRVIFNIVNFSKTKSLYRDGMAMPVKSTSRPKWQRLPPKNVYYRCP  
 DHRKNYVMSFAFCFDREEDIYQFAYCYPYTYTRFQHYLDSLQKRNDYFFREQLGQSVQQRKLDLLTITS  
 PDNLREGAEQKVVFITGRVHPGETPSSFVCQGIIDFLVSQHPACVLRREYLVKIAPMLNPDGVYLGNYR  
 CSLMGFDLNRHWLDPSPWVHPTLHGKQLIVQMYNDPKTSLEFYIDIHAHSTMMNGFMYGNIFEDEERFQ  
 RQAIFPKLLCQNAEDFSYSSTSFNRDAVKAGTGRRFLGGLLDHTSYCYTLEVSFYSYIISGTTAAVPYTE  
 EAYMKLGRNVARTFLDYRNLNPVVEKVAIPMPRLRNKEIEVQRRKEKSPYKHPLLRGPASNYPSKGDK  
 KSSVNHKDPSTPF

**TRTRPLEQKLI**SEEDLAANDILDYKDDDDKV

**Chromatograms:**

[https://cdn.origene.com/chromatograms/mk8063\\_h08.zip](https://cdn.origene.com/chromatograms/mk8063_h08.zip)

**Restriction Sites:**

Sgfl-Mlul

**Cloning Scheme:**


**ACCN:** NM\_032785

**ORF Size:** 1509 bp

**OTI Disclaimer:** The molecular sequence of this clone aligns with the gene accession number as a point of reference only. However, individual transcript sequences of the same gene can differ through naturally occurring variations (e.g. polymorphisms), each with its own valid existence. This clone is substantially in agreement with the reference, but a complete review of all prevailing variants is recommended prior to use. [More info](#)

**OTI Annotation:** This clone was engineered to express the complete ORF with an expression tag. Expression varies depending on the nature of the gene.

**Components:** The ORF clone is ion-exchange column purified and shipped in a 2D barcoded Matrix tube containing 10ug of transfection-ready, dried plasmid DNA (reconstitute with 100 ul of water).

- Reconstitution Method:**
1. Centrifuge at 5,000xg for 5min.
  2. Carefully open the tube and add 100ul of sterile water to dissolve the DNA.
  3. Close the tube and incubate for 10 minutes at room temperature.
  4. Briefly vortex the tube and then do a quick spin (less than 5000xg) to concentrate the liquid at the bottom.
  5. Store the suspended plasmid at -20°C. The DNA is stable for at least one year from date of shipping when stored at -20°C.

**RefSeq:** [NM\\_032785.4](#)

**RefSeq ORF:** 1512 bp

**Locus ID:** 84871

**UniProt ID:** [Q5VU57](#)

**Cytogenetics:** 1p33

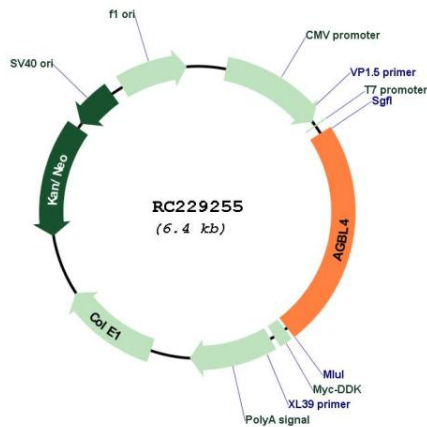
**Domains:** Zn\_carbOpept

**Protein Families:** Druggable Genome

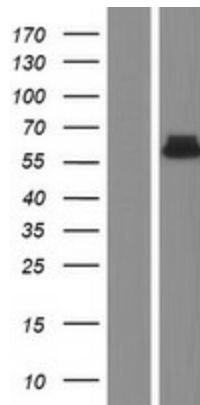
**MW:** 58 kDa

**Gene Summary:** Metalloprotease that mediates deglutamylation of target proteins. Catalyzes the deglutamylation of polyglutamate side chains generated by post-translational polyglutamylation in proteins such as tubulins. Also removes polyglutamates from the carboxy-terminus of target proteins such as MYLK. Mediates deglutamylation of CGAS, regulating the antiviral activity of CGAS. Acts as a long-chain deglutamylase and specifically shortens long polyglutamate chains, while it is not able to remove the branching point glutamate, a process catalyzed by AGBL5/CCP5.[UniProtKB/Swiss-Prot Function]

**Product images:**



Circular map for RC229255



Western blot validation of overexpression lysate (Cat# [LY432275]) using anti-DDK antibody (Cat# [TA50011-100]). Left: Cell lysates from un-transfected HEK293T cells; Right: Cell lysates from HEK293T cells transfected with RC229255 using transfection reagent MegaTran 2.0 (Cat# [TT210002]).