

## Product datasheet for **RC229254**

### THUMPD2 (NM\_025264) Human Tagged ORF Clone

#### Product data:

Product Type:	Expression Plasmids
Product Name:	THUMPD2 (NM_025264) Human Tagged ORF Clone
Tag:	Myc-DDK
Symbol:	THUMPD2
Synonyms:	C2orf8
Mammalian Cell Selection:	Neomycin
Vector:	pCMV6-Entry (PS100001)
E. coli Selection:	Kanamycin (25 ug/mL)



[View online »](#)

**ORF Nucleotide Sequence:**

>RC229254 representing NM\_025264  
 Red=Cloning site Blue=ORF Green=Tags(s)

TTTTGTAATACGACTCACTATAGGGCGGCCGGAATTCGTCGACTGGATCCGGTACCGAGGAGATCTGCC  
 GCC**CGCATCGCC**

ATGTCGGAGGCGCGTGGAGAGCCAGGGTCCGGCCTGAGGCTGGCGCCGATTCTTCTGCACTGCGGGTC  
 GCGGCCTGGAGCCGTTCTGAATGCGAGAGGTGCGGGCGCGCTGGCGGCCACGCAGGTTGAATATATTTTC  
 AGGAAAGGTTTTTTTACCACCTGTTCTGATTTGAATATGTTGAAGAAATTAATACTGCAGAAAGATTA  
 TTTTTGCTGATTAATAAGCAGTTTCCACTTATTATTTCTTCTGTAAGTAAAGAAAAATTTAATGAAA  
 TGCAAAGACTTATAAATGAAGATCCAGGAAGTTGGTTGAATGCCATTTCAATTTGGAAAAATCTTCTTGA  
 ACTTGATGCAAAAAAGAAAACTTTCTCAGAGAGATGATAACCAACTAAAAAGAAAAAGTGGGAGAAAAAT  
 GAAATCATTGCAAAAGAAATTAATAAGAACAAATGCAAAAGATAGAAGAGAATAGGGACTGCCAGCTGG  
 AAAACAATAAAAGAAGAACTCTGGAGCAAAGAGATTTTACCCTAAAAGCGAAAAAGTTCAAGAAGA  
 AGAATTCAGAATGACATAGAGAAAGCAATTGATACTCATAATCAGAATGACTTGACTTTTCAGAGTATCT  
 TGTTCGCTGCAGTGGAACTATTGGAAAGGCTTCACTGCACAGGAGGTAGGAAAAGTAATTGGAATTGCTA  
 TTATGAAACACTTTGGATGGAAAGCAGACTTGAGGAATCCACAATTAGAGATCTTTATACATCTAAATGA  
 CATTTACTCTGTGGTGGGATTCTGTGTTTCCAGGTTTCCCTAGCCAGCAGAGCTTACATCAAGACAGCT  
 GGACTGCGATCTACAATAGCGTGGGCAATGGCATCTCTGGCTGACATTAAGGCTGGTGCATTTGTTTTAG  
 ATCCAATGTGTGGACTTGGAAACAATACTTTTGGAAAGCTGCTAAAGAAATGGCCAGATGTGTATTATGAGG  
 TGCTGATGTCAGCGACTCACAGTTACTAGTACTTGGGACAATCTGAAAGCTGCAGGCCTTGAGGATAAA  
 ATTGAATTACTTAAAATCTCTGTTATAGAATTGCCATTGCCTTCAGAAAGTGTGATATTATTATTTCTG  
 ACATTCATTTGGGAAAAAGTTTAAAGTTAGGAAAAGACATCAAAGCATTCTACAAGAAATGGAAAGAGT  
 GCTTCATGTTGGCGGAACCATTTGATTGTTGCTTAGTGAAGATCACACAGGCGCCTTACAGATTGTAAA  
 GAGAGCAACATCCCTTTCAATTCGAAGGACAGTACACAGATGAACCTGGAATTAAGAAAGTCTTGAATC  
 CTGAAGAAAAACTGGTGCATTCAAGACAGCGTCAACTTCATTGGAAGCCAGTAACCACAAATCTTAGA  
 CAGAATGTACCATTGGCTCCTTGGTACCAGTGGAAATGCTACAAAGTTAGCCTTGGAAAGACAGATGCG  
 TTCATATGTAATAAGAAGTCGCACTCTTCTGGACTG

**ACGCGT**ACGCGGCCGCTCGAGCAGAAACTCATCTCAGAAGAGGATCTGGCAGCAAATGATATCTGGATT  
 ACAAGGATGACGACGATAAGGTTTAA

**Protein Sequence:**

>RC229254 representing NM\_025264  
 Red=Cloning site Green=Tags(s)

MSEARGEPGSGPEAGARFFCTAGRLEPFVMREVRARLAATQVEYISGKVFVFTTCSDLNMLKKLKAERL  
 FLLIKKQFPLIISVSKGKIFNEMQRLINEDPGSWLNAISIWKNLLELDAKKEKLSQRDDNQLKRKVGEN  
 EIIAKKLIKIEQMQKIEENRDCQLEKQIKEETLEQRDFTTKSEKFQEEEFQNDIEKAIDTHNQNDLFRVS  
 CRCSGTIGKAFTAQEVGKIVIGIAIMKHFGWKADLRNPQLEIFIHLDNIYSVVGIPVFRVSLASRAYIKTA  
 GLRSTIAWAMASLADIKAGAFVLDPMCGLGTLLEAAKEWPDVYVYGADVSDSLLGTWDLNKAAGLEDK  
 IELLKISVIELPLPSESVDIIISDIPFGKFKLGDIKSILQEMERVLHVGGTIVLLLSEDHRRRLTDCK  
 ESNIPFNSKDSHTDEPGIKKCLNPEEKTGAFKTAASFASNHKFLDRMSPFGSLVPEVCYKVS LGKTD  
 FICKYKKS HSSGL

**TRTRPLEQKLI**SEEDLAANDILDYKDDDDKV

**Chromatograms:**

[https://cdn.origene.com/chromatograms/mk8063\\_h07.zip](https://cdn.origene.com/chromatograms/mk8063_h07.zip)

**Restriction Sites:**

Sgfl-Mlul

**Cloning Scheme:**


**ACCN:** NM\_025264

**ORF Size:** 1509 bp

**OTI Disclaimer:** The molecular sequence of this clone aligns with the gene accession number as a point of reference only. However, individual transcript sequences of the same gene can differ through naturally occurring variations (e.g. polymorphisms), each with its own valid existence. This clone is substantially in agreement with the reference, but a complete review of all prevailing variants is recommended prior to use. [More info](#)

**OTI Annotation:** This clone was engineered to express the complete ORF with an expression tag. Expression varies depending on the nature of the gene.

**Components:** The ORF clone is ion-exchange column purified and shipped in a 2D barcoded Matrix tube containing 10ug of transfection-ready, dried plasmid DNA (reconstitute with 100 ul of water).

- Reconstitution Method:**
1. Centrifuge at 5,000xg for 5min.
  2. Carefully open the tube and add 100ul of sterile water to dissolve the DNA.
  3. Close the tube and incubate for 10 minutes at room temperature.
  4. Briefly vortex the tube and then do a quick spin (less than 5000xg) to concentrate the liquid at the bottom.
  5. Store the suspended plasmid at -20°C. The DNA is stable for at least one year from date of shipping when stored at -20°C.

**RefSeq:** [NM\\_025264.5](#)

**RefSeq ORF:** 1512 bp

**Locus ID:** 80745

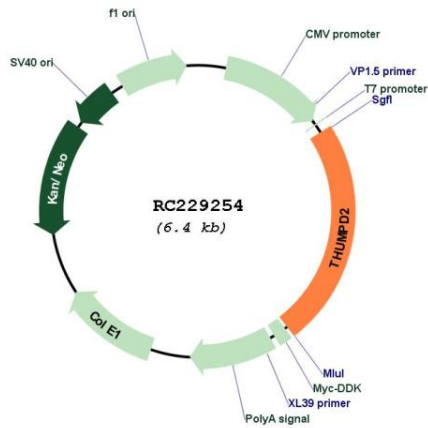
**UniProt ID:** [Q9BTF0](#)

**Cytogenetics:** 2p22-p21

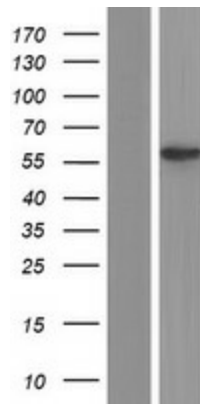
**Protein Families:** Druggable Genome

MW: 56.3 kDa

Product images:



Circular map for RC229254



Western blot validation of overexpression lysate (Cat# [LY432274]) using anti-DDK antibody (Cat# [TA50011-100]). Left: Cell lysates from untransfected HEK293T cells; Right: Cell lysates from HEK293T cells transfected with RC229254 using transfection reagent MegaTran 2.0 (Cat# [TT210002]).