

Product datasheet for **RC229230**

ASB10 (NM_080871) Human Tagged ORF Clone

Product data:

Product Type:	Expression Plasmids
Product Name:	ASB10 (NM_080871) Human Tagged ORF Clone
Tag:	Myc-DDK
Symbol:	ASB10
Synonyms:	GLC1F
Mammalian Cell Selection:	Neomycin
Vector:	pCMV6-Entry (PS100001)
E. coli Selection:	Kanamycin (25 ug/mL)



[View online »](#)

ORF Nucleotide Sequence:

>RC229230 representing NM_080871
 Red=Cloning site Blue=ORF Green=Tags(s)

TTTTGTAATACGACTCACTATAGGGCGGCCGGAATTCGTCGACTGGATCCGGTACCGAGGAGATCTGCC
 GCC**CGCATCGCC**

ATGCCCTGGGAAAGAACTCCTCTCCCACTGGGGACACCATCTGGGGTGCCTTCCCTCCGCCCCGGCT
 GCCGATCTGGAGCCCCACTCCCGCCAGCCTGGGAGCCCCCTCGGCCATCACCACTGCTCTGCCAAGA
 CATGGCCCTGCAGAATGCCCTCTACACCGGGACCTGGCAAGGTTGCAGGAGCTGTTCCCCCGCACAGC
 ACAGCCGACTGCTGCTGGAGAGCCGGCCGAGAGCCTCGTGGAGCAGCCACCAGAGGGGACTCTGGT
 CTCTGACATACGAAGAGGAGCTGACCACCCCACTGCATGTGGCAGCCAGCCGTGGCCACACGGAAGTCT
 GCGGCTGCTGCTGAGGCGCGAGCAAGGCCAGACAGTGCCCTGGGGGCCGACCCCTGCACGAGGCC
 TGTGCTGACGGCCACACTGCCTGTGTTTATGTGCTGCTGGTGGCAGGAGCCGACCCCAACATCGCTGACC
 AGGATGGGAAACCCCCCTGCATCTCTGCCGGGGCTGGCACCCCTTGTGTGCGGAGCTGCTCCTCAG
 GTTTGGAGCGAGAGTGGATGGTCCGTCCGAGGAAGAAGAGGAGACCCCTTGCATGTGGCCGCCGGCTT
 GGCATGTGGAGCTGGCAGATCTGCTTCTAAGACGGGGGCATGTCTGTGCCCCGAATGCCGAAGGCT
 GGACCCCACTGCTGGCTGCCTGTGACGTCCGCTGCCAGTCCATCACCGATGCCGAGGCCACCACCGCCC
 CTGCTGCAGCTGTGCAGCTTGCTGCTTTCAGCTGGAGCAGACGCTGATGCTGCGGACCAGGACAAGCAG
 CGACCCCTGCACCTGGCTGCCGCCGTGGCCATGCAGCTGTGCTGGAGCTGCTCCTGTCTGTGGTGTCA
 GCGCAACACCATGGACTATGGGGACACACGCCCTGCACTGTGCTCTGCAGGGCCAGCTGCAGCCCT
 GGCCAGAGCCCCGAGCAGTGGTTCGGGCTCTGCTCAACATGGCGCCGTCCGTGTCTGCCAGGGGCC
 CTCCCCAAGGTGCTGGAGCGCTGGAGCAGTGCCTCGGACCATCGAGGTCTGATGAACACCTACAGTG
 TTGTGACGTTCCCGAGGAGCCGTCGGCCTGGTACTCTGAACTCTGCAGAAACATCAGCGTTTCTA
 CTCTCCCTCTTCGCTTGGTGGGAGGCCAGCCAGTCCGCTGCAGCATTTGAGCCGCTGTGCCCTCCGCTCC
 CACCTGGAGGGCAGCCTGCCCAAGCGCTGCCCGCCTCCCCCTGCCACCGCGCTGCTCCGCTACCTGC
 AGCTGGATTTTGGGGCGTGTCTAC

ACGCGTACGCGGCCGCTCGAGCAGAACTCATCTCAGAAGAGGATCTGGCAGCAAATGATATCCTGGATT
 ACAAGGATGACGACGATAAGGTTTAA

Protein Sequence:

>RC229230 representing NM_080871
 Red=Cloning site Green=Tags(s)

MPWGKNSSPHWGHHLGCLPSAPACRIWRPHSRPAWEPPRPSPLLQDMALQNALYTGDLARLQELFPPHS
 TADLLLESRAAEPRWSSHQRGLWSLYEEELTTPHVAASRGHTEVLRLLRRRRARPD SAPGGRTALHEA
 CAAGHTACVHLLVAGADPNADQDGRPLHLRCGPGTLECAELLLRFGARVDGRSEEEEEETPLHVAARL
 GHVELADLLRRGACPDARNAEGWTPLLAACDVRCQSITDAEATTARCLQLCSLLL SAGADADAADQDKQ
 RPLHLACRRGHAAVVVLLSCGVSANTMDYGGHTPLHICALQGPAALAAQSPHVVRRALLNHGAVRVWPGA
 LPKVLERWSTCPRTIEVLMNTYSVVQLPEEAVGLVTPETLQKHQRFYSSLFALVRQPRSLQHL SRCALRS
 HLEGLPQALPRLPLPPRLLRYLQLDFEGVLY

TRTRPLEQKLISEEDLAANDILDYKDDDDKV

Chromatograms:

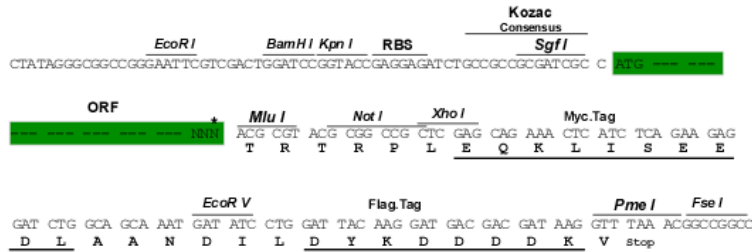
https://cdn.origene.com/chromatograms/ja1380_b03.zip

Restriction Sites:

Sgfl-Mlul

Cloning Scheme:

Cloning sites used for ORF Shutting:



* The last codon before the Stop codon of the ORF

ACCN: NM_080871

ORF Size: 1356 bp

OTI Disclaimer: The molecular sequence of this clone aligns with the gene accession number as a point of reference only. However, individual transcript sequences of the same gene can differ through naturally occurring variations (e.g. polymorphisms), each with its own valid existence. This clone is substantially in agreement with the reference, but a complete review of all prevailing variants is recommended prior to use. [More info](#)

OTI Annotation: This clone was engineered to express the complete ORF with an expression tag. Expression varies depending on the nature of the gene.

Components: The ORF clone is ion-exchange column purified and shipped in a 2D barcoded Matrix tube containing 10ug of transfection-ready, dried plasmid DNA (reconstitute with 100 ul of water).

Reconstitution Method:

1. Centrifuge at 5,000xg for 5min.
2. Carefully open the tube and add 100ul of sterile water to dissolve the DNA.
3. Close the tube and incubate for 10 minutes at room temperature.
4. Briefly vortex the tube and then do a quick spin (less than 5000xg) to concentrate the liquid at the bottom.
5. Store the suspended plasmid at -20°C. The DNA is stable for at least one year from date of shipping when stored at -20°C.

RefSeq: [NM_080871.4](#)
RefSeq ORF: 1359 bp

Locus ID: 136371

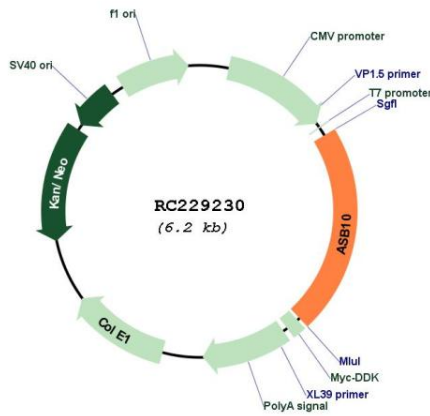
UniProt ID: [Q8WXI3](#)
Cytogenetics: 7q36.1

Protein Families: Druggable Genome

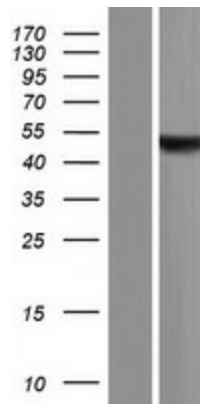
MW: 49.4 kDa

Gene Summary: The protein encoded by this gene is a member of the ankyrin repeat and SOCS box-containing (ASB) family of proteins. The SOCS box serves to couple suppressor of cytokine signaling (SOCS) proteins and their binding partners with the elongin B and C complex, possibly targeting them for degradation. Multiple alternatively spliced transcript variants have been described for this gene. [provided by RefSeq, Dec 2008]

Product images:



Circular map for RC229230



Western blot validation of overexpression lysate (Cat# [LY432251]) using anti-DDK antibody (Cat# [TA50011-100]). Left: Cell lysates from untransfected HEK293T cells; Right: Cell lysates from HEK293T cells transfected with RC229230 using transfection reagent MegaTran 2.0 (Cat# [TT210002]).