

Product datasheet for **RC229229**

SPRYD5 (TRIM51) (NM_032681) Human Tagged ORF Clone

Product data:

Product Type:	Expression Plasmids
Product Name:	SPRYD5 (TRIM51) (NM_032681) Human Tagged ORF Clone
Tag:	Myc-DDK
Symbol:	SPRYD5
Synonyms:	SPRYD5; TRIM51A
Mammalian Cell Selection:	Neomycin
Vector:	pCMV6-Entry (PS100001)
E. coli Selection:	Kanamycin (25 ug/mL)



[View online »](#)

ORF Nucleotide Sequence:

>RC229229 representing NM_032681
 Red=Cloning site Blue=ORF Green=Tags(s)

TTTTGTAATACGACTCACTATAGGGCGGCCGGAATTCGTCGACTGGATCCGGTACCGAGGAGATCTGCC
 GCC**CGGATCGCC**

ATGAATCTGGAATCTTGAAGTCTCCAGAGGGCACTCACCTGTCCCATCTGCATGAACACTCTCCTAG
 ACCCAGTCACCATAGACTGTGGGCACAGCTTTTCCCGCCCTGTTGTACCTCAACTGGCAAGACACGGC
 AGTTCTTGCTCAGTGCTCTGAATGCAAGAAGACAACGCGGCAGAGAAACCTCAACTGACATTTGTTT
 AAGAACATGGCTTTCATTGCCAGAAAAGCCAGCCTCCGGCAATTCCTTAGCTCTGAGGAGCAAATATGTG
 GGATGCACAGAGAGACAAAGAAGATGTTCTGTGAAGTGGACAAGAGCCTGCTCTGTTTCCGTGCTCCAA
 CTCTCAGGAGCACCGAATCACATACACTGTCCCATTGAGTGGGCTGCTGAGGAACGCCGGGAGGAGCTC
 CTAATAAAAAATGCAGTCTTTATGGGAAAAGCTTGTGAAAATCTCAGAAATCTGAACATGAAAACCAAA
 GAACCAGATGCTGGAAGGATTATGTGAGTTAAGGATAGAAGCAATCAGAGCTGAATATCAGAAGATGCC
 TGCATTTCTCCATGAAGAAGAGCAACATCACTTGGAAAGGCTGCGAAAGGAGGGCGAGGACATTTTTCAG
 CAACTCAATGAAAGCAAAGCCAGAATGGAACATTCAGGGAGCTTTTAAGAGGAATGTATGAGGATCTGA
 AGCAAAATGTGCCATAAAGCAGATGTGGAGCTACTCCAGGCTTTTGGAGACATATTACACAGGTATGAGTC
 TCTGCTGCTGCAAGTGTCTGAGCCTGTGAATCCAGAGCTCAGTGCAGGGCCCATCACTGGACTGCTGGAC
 AGCCTCAGTGGATTAGAGTTGATTTTACTCTGCAGCCTGAAAGAGCCAAATAGTCATATCTTCTGTGTG
 GAGATTTGAGAAGCATGAATGTTGGATGTGACCCTCAAGATGATCCCGATATCACTGGAAAATCTGAATG
 TTTTCTTGATGGGGGCTCAGGCTTTCACATCTGGCAAATATTATTGGGAGTTTATATGGGGACTCT
 TGAATGGGCTTTTGGTGTCTGTAACAATTATTGGAAAGAGAAGAGACAGAATGACAAGATAGATGGAG
 AGGAGGGACTCTTTCTTCTGGATGTGTTAAGGAGGACTCACTGCAGTCTCTTTACCACCTCCCCT
 TGTGGTGAATATGTTCCAAGACCTACCAGCAGTAGGATTATTCCTGGATTGTGAAGGTAGAACCCTG
 AGCTTTGTTGATGTTGATCAAAGTTCCTGATATACACCATCCCAATTGCTCCTTCTCACCTCCTCTCA
 GCCTATCTTTGCTGTAGTCACTTC

ACGCGTACGCGGCCGCTCGAGCAGAACTCATCTCAGAAGAGGATCTGGCAGCAAATGATATCCTGGATT
 ACAAGGATGACGACGATAAGGTTTAA

Protein Sequence:

>RC229229 representing NM_032681
 Red=Cloning site Green=Tags(s)

MNSGILQVFQRALTCPICMNYFLDPVTIDCGHSFCRPCLYLNWQDTAVLAQCSECKKTRQRNLNTDICL
 KNMAFIARKASLRQFLSSEEQICGMHRETKKMFCEVDKSLCLPCSNSQEHRNHIHCPIEWAAEERREEL
 LKKMQSLWEKACENLRNLNMETTRTRCWKDYVSLRIEAIIRAEYQKMPAFLHEEEQHHLERLRKEGEDIFQ
 QLNEKARMEHSRELLRGMIEDLKQMKHADVLLQAFGDILHRYESLLLQVSEPVNPELSAGPITGLLD
 SLSGFRVDFTLQPERANSHIFLCGLRSMNVGCDPQDDPDITGKSECFVWGAQAFVSGKYYWEVHMGD
 WNWAFGVCNNYWEKQRQNDKIDGEEGLFLLGCYKEDTHCSLFTTSPLVVQYVPRPTSTVGLFLDCEGRV
 SFVDVDQSSLIYIPNCSFSPPLRPIFCCSHF

TRTRPLEQKLISEEDLAANDILDYKDDDDKV

Chromatograms:

https://cdn.origene.com/chromatograms/mk8061_a02.zip

Restriction Sites:

Sgfl-Mlul

Cloning Scheme:


ACCN: NM_032681

ORF Size: 1356 bp

OTI Disclaimer: The molecular sequence of this clone aligns with the gene accession number as a point of reference only. However, individual transcript sequences of the same gene can differ through naturally occurring variations (e.g. polymorphisms), each with its own valid existence. This clone is substantially in agreement with the reference, but a complete review of all prevailing variants is recommended prior to use. [More info](#)

OTI Annotation: This clone was engineered to express the complete ORF with an expression tag. Expression varies depending on the nature of the gene.

Components: The ORF clone is ion-exchange column purified and shipped in a 2D barcoded Matrix tube containing 10ug of transfection-ready, dried plasmid DNA (reconstitute with 100 ul of water).

Reconstitution Method:

1. Centrifuge at 5,000xg for 5min.
2. Carefully open the tube and add 100ul of sterile water to dissolve the DNA.
3. Close the tube and incubate for 10 minutes at room temperature.
4. Briefly vortex the tube and then do a quick spin (less than 5000xg) to concentrate the liquid at the bottom.
5. Store the suspended plasmid at -20°C. The DNA is stable for at least one year from date of shipping when stored at -20°C.

RefSeq: [NM_032681.4](#)

RefSeq ORF: 1359 bp

Locus ID: 84767

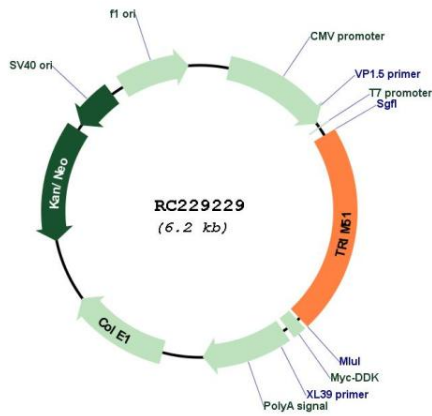
UniProt ID: [Q9BSJ1](#)

Cytogenetics: 11q12.1

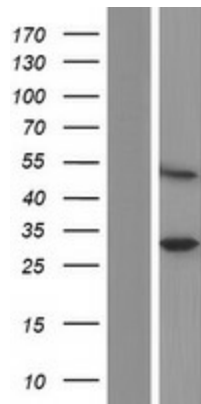
Protein Families: Druggable Genome

MW: 52.1 kDa

Product images:



Circular map for RC229229



Western blot validation of overexpression lysate (Cat# [LY432250]) using anti-DDK antibody (Cat# [TA50011-100]). Left: Cell lysates from untransfected HEK293T cells; Right: Cell lysates from HEK293T cells transfected with RC229229 using transfection reagent MegaTran 2.0 (Cat# [TT210002]).