

## Product datasheet for **RC229226**

### **C16orf73 (MEIOB) (NM\_152764) Human Tagged ORF Clone**

#### **Product data:**

Product Type:	Expression Plasmids
Product Name:	C16orf73 (MEIOB) (NM_152764) Human Tagged ORF Clone
Tag:	Myc-DDK
Symbol:	C16orf73
Synonyms:	C16orf73; gs129; SPGF22
Mammalian Cell Selection:	Neomycin
Vector:	pCMV6-Entry (PS100001)
E. coli Selection:	Kanamycin (25 ug/mL)



[View online »](#)

**ORF Nucleotide Sequence:**

>RC229226 representing NM\_152764  
 Red=Cloning site Blue=ORF Green=Tags(s)

TTTTGTAATACGACTCACTATAGGGCGGCCGGAATTCGTCGACTGGATCCGGTACCGAGGAGATCTGCC  
 GCC**CGGATCGCC**

ATGGCAAACCTTTTGCAGCGAGGATTTTCACTACCCCTTCAGATCTGCAGACAAATATGGCTAATCTGA  
 AAGTTATCGGTATAGTTATTGGGAAAACAGATGTCAAAGCTTTCCAGACAGAAAAAATATTGGATCAGA  
 AAGGTACACTTTTCACTTACCATTTCGGGATTCACCAGCACATTTTGTAAATGCAGCTTCTCTGGGCAAT  
 GAAGATTACATCAAGTCTCTTTCTGACAGCTTTAGGGTTGGTACTGTGTGATAATTGAAAATCCTCTGA  
 TCCAAAGAAAGGAAATAGAAAGAGAAGAAAAATTCAGCCCTGCAACTCCTAGCAACTGTAACTGTTGCT  
 CAGTGAGAATCACTCAACAGTAAAAGTTTGTCCAGTTATGAAGTGGACACAAAGTTACTTTCTTTGATA  
 CATTTACCTGTTAAAGAGTCTCATGATTATTACTGGGTGACATTGTTGCAAATGGACACAGCTTAA  
 ATGGGAGGATTATTAACGTGCTGCAGCTGTGAAATCGGTTGGAGAGCCAAAATACTTTACAACCTCAGA  
 CCGGAGAAAAGGCCAGAGGTGTGAAGTTAGACTCTATGATGAAACAGAGTCGTCTTTTTCGATGACATGT  
 TGGGATAATGAATCCATTCTACTTGCACAGAGCTGGATGCCACGAGAAACAGTAATTTGCCTCAGATG  
 TAAGAATAAATTTTGACAAATTCGGAAGTGCATGACAGCAACTGTAATCTCAAAAACCATTATTACAAC  
 TAATCCAGATATACCAGAAGCTAACATTCTGCTGAATTTTATACGAGAAAATAAGAAACGAATGTTCTG  
 GATGATGAAATTGACAGTTATTTCAAAGAATCCATAAATTTAAGTACAATAGTTGATGTCTACACAGTTG  
 AACAAATTAAGGGAAAAGCTTTGAAGAATGAAGGAAAAGCTGATCCTTCTATGGCATCCTTTATGCCTA  
 CATTTCCACACTCAACATTGATGATGAACTACAAAAGTAGTTCGAAATAGATGTTCCAGCTGTGGTTAT  
 ATTGATAATGAAGCATCTAACATGTGCACAACCTGCAACAAAACTCCTTGGACTTTAAATCTGTCTTTC  
 TCAGTTTCCATGTGCTGATTGATCTGACTGATCACACAGGCACCCTTCATTCTGTAGTCTCACAGGAAG  
 GTTTGCTGAGGAGACTTTGGGCTGCACGTTCTGTTCTATCACACAGAGCAAGGAGTGGATTGAAAATTAGT  
 GACTCTCGTGCAAGCTTGCAGATCCTACTGAGGCAAGCAGAACTTGTCTGGACAAAAACATGTT

**ACGCGT**ACGCGGCCGCTCGAGCAGAACTCATCTCAGAAGAGGATCTGGCAGCAATGATATCCTGGATT  
 ACAAGGATGACGACGATAAGGTTTAA

**Protein Sequence:**

>RC229226 representing NM\_152764  
 Red=Cloning site Green=Tags(s)

MANSFAARIFTTLSDLQTNMANLKVIGIVIGKTDVKGFPDRKNIGSERYTFSFTIRDSPAHFVNAASWGN  
 EDYIKSLSDSFRVGDVIEENPLIQRKEIEREEKFSPATPSNCKLLLSENHSTVKVCSSEYVDTKLLSLI  
 HLPVKESHDDYSLGDIVANGHSLNGRIINVLAAVKSVGEPKYFTTSDRRKGQRCEVRLYDETESSFAMTC  
 WDNESILLAQSWMPRETIVIFASDVRFNDFKFRNCMTATVISKTIITNPDIPEANILLNFIRENKETNVL  
 DDEIDSYFKESINLSTIVDYVYVEQLKGLKALNEGKADPSYGILYAYISTLNIDDETTKVVNRNRCSSCGY  
 IVNEASNMCCTCNKNSLDFKSVFLSFHVLIDLTDHTGTLHSCSLTGSVAEETLGCTFVLSHRARSGLKIS  
 VLSCKLADPTEASRNLSGQKHV

**TR**TRPLEQKLISEEDLAANDILDYKDDDDKV

**Chromatograms:**

[https://cdn.origene.com/chromatograms/mk8060\\_c06.zip](https://cdn.origene.com/chromatograms/mk8060_c06.zip)

**Restriction Sites:**

Sgfl-Mlul

**Cloning Scheme:**


**ACCN:** NM\_152764

**ORF Size:** 1326 bp

**OTI Disclaimer:** The molecular sequence of this clone aligns with the gene accession number as a point of reference only. However, individual transcript sequences of the same gene can differ through naturally occurring variations (e.g. polymorphisms), each with its own valid existence. This clone is substantially in agreement with the reference, but a complete review of all prevailing variants is recommended prior to use. [More info](#)

**OTI Annotation:** This clone was engineered to express the complete ORF with an expression tag. Expression varies depending on the nature of the gene.

**Components:** The ORF clone is ion-exchange column purified and shipped in a 2D barcoded Matrix tube containing 10ug of transfection-ready, dried plasmid DNA (reconstitute with 100 ul of water).

**Reconstitution Method:**

1. Centrifuge at 5,000xg for 5min.
2. Carefully open the tube and add 100ul of sterile water to dissolve the DNA.
3. Close the tube and incubate for 10 minutes at room temperature.
4. Briefly vortex the tube and then do a quick spin (less than 5000xg) to concentrate the liquid at the bottom.
5. Store the suspended plasmid at -20°C. The DNA is stable for at least one year from date of shipping when stored at -20°C.

**RefSeq:** [NM\\_152764.3](#)

**RefSeq ORF:** 1329 bp

**Locus ID:** 254528

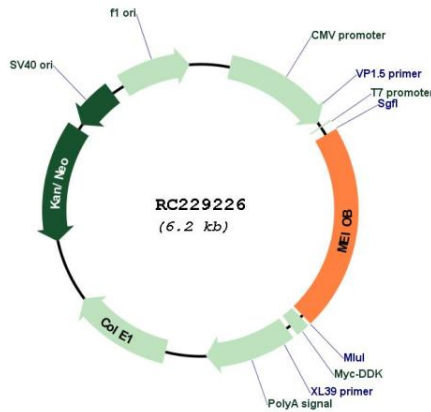
**UniProt ID:** [Q8N635](#)

**Cytogenetics:** 16p13.3

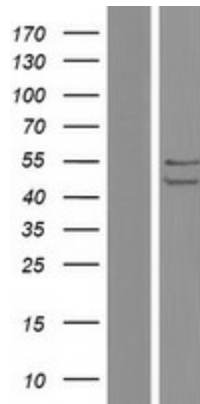
**MW:** 49.1 kDa

**Gene Summary:**

Single-stranded DNA-binding protein required for homologous recombination in meiosis I. Required for double strand breaks (DSBs) repair and crossover formation and promotion of faithful and complete synapsis. Not required for the initial loading of recombinases but required to maintain a proper number of RAD51 and DMC1 foci after the zygotene stage. May act by ensuring the stabilization of recombinases, which is required for successful homology search and meiotic recombination. Displays Single-stranded DNA 3'-5' exonuclease activity in vitro (By similarity).[UniProtKB/Swiss-Prot Function]

**Product images:**


Circular map for RC229226



Western blot validation of overexpression lysate (Cat# [LY432247]) using anti-DDK antibody (Cat# [TA50011-100]). Left: Cell lysates from untransfected HEK293T cells; Right: Cell lysates from HEK293T cells transfected with RC229226 using transfection reagent MegaTran 2.0 (Cat# [TT210002]).