

## Product datasheet for **RC229222**

### **WDR21A (DCAF4) (NM\_181341) Human Tagged ORF Clone**

#### **Product data:**

Product Type:	Expression Plasmids
Product Name:	WDR21A (DCAF4) (NM_181341) Human Tagged ORF Clone
Tag:	Myc-DDK
Symbol:	WDR21A
Synonyms:	WDR21; WDR21A
Mammalian Cell Selection:	Neomycin
Vector:	pCMV6-Entry (PS100001)
E. coli Selection:	Kanamycin (25 ug/mL)



[View online »](#)

**ORF Nucleotide Sequence:**

>RC229222 representing NM\_181341  
 Red=Cloning site Blue=ORF Green=Tags(s)

TTTTGTAATACGACTCACTATAGGGCGGCCGGAATTCGTCGACTGGATCCGGTACCGAGGAGATCTGCC  
 GCC**CGCATCGCC**

ATGAATAAAAGTCGCTGGCAGAGTAGAAGACGACATGGGAGAAGAAGCCACCAGCAGAACCCTTGGTTCA  
 GACTCCGTGATTCTGAAGACAGGTCTGACTCCCGGCAGCACAGCCCGCTCACGATTCCGGCCACGGTGA  
 TGACGAGTCTCCGTCAACCTCGTCTGGCACAGCTGGGACCTCCTCTGTGCCAGAGCTACCTGGGTTTTAC  
 TTTGACCTGAAAAGAAACGCTACTTCCGCTTGCTCCCTGGACATAACAACCTGCAACCCCTGACGAAAAG  
 AGAGCATCCGGCAGAAGGAGATGGAGAGCAAGAGACTGCGGTGCTCCAGGAAGAAGACAGACGGAAAAA  
 GGCAGATACCAACAGTGACCGGCTCTTCACAGTGAACGATGTTAAAGTTGGAGGCTCCAAGTATGGTATC  
 ATCAACCTGCAAAGTCTGAAGACCCTACGCTCAAGGTGTTTCATGCACGAAAACCTCTACTTACCAACCC  
 GGAAGGTGAATTCGGTGTGCTGGGCTCGCTGAATCACTTGGATCCCACATTCTGCTATGCCTCATGGG  
 ACTCGCAGAGACTCCAGGCTGTGCCACCCTGCTCCAGCATCACTGTTTCGTCATAGTACCCAGCAGGA  
 ATAGACCGGCCTGGCATGCTCTGCAATTCGGATCCCTGGTGCCTGGTCTGTGCTGGTCCCTGAATA  
 TCCAAGCAAATAACTGCTTCAGTACAGGCTTGTCTCGGCGGGTCTGTTGACCAAGTGGTGACGGGACA  
 CCGGCAGTCCCTTTGGGACCAACAGTGTGTCTGGCCAGCAGTTTGGTCTCATGGCTCCTCTGCTGTTT  
 AATGGCTGCCGCTCTGGGAAATCTTTGCCATTGATCTGCGTTGTGGAAATCAAGGCAAGGGATGGAAGG  
 CCACCCGCTGTTTCATGATTACAGCAGTACCTCTGTGCGGATCCTCCAAGATGAGCAATACCTGATGGC  
 TTCAGACATGGCTGGAAGATCAAGCTGTGGGACCTGAGGACCACGAAGTGCCTAAGGCAGTACGAAGGC  
 CAGTGAATGAGTACGCCTACCTGCCCTGCATGTGCACGAGGAAGAAGGAATCCTGGTGGCAGTGGGCC  
 AGGACTGCTACACGAGAATCTGGAGCTCCACGATGCCCGCCTACTGAGAACCATACCTCCCCGTACCC  
 TGCTCCAAGGCCGACATTCACAGTGTGGCTTCTCGTCGCGGCTGGGGGGCTCCCGGGCGCCGGGG  
 CTGCTCATGGCTGTGGGAGGACCTTTACTGTTACTCCTACAGC

**ACGCGT**ACGCGGCCGCTCGAGCAGAACTCATCTCAGAAGAGGATCTGGCAGCAAATGATATCCTGGATT  
 ACAAGGATGACGACGATAAGGTTTAA

**Protein Sequence:**

>RC229222 representing NM\_181341  
 Red=Cloning site Green=Tags(s)

MNKSRWQSRRRHGRRSHQNPWFRLRDSSEDRSDSRAAQP AHDSGHGDDESPSTSSGTAGTSSVPELPGFY  
 FDPEKKRYFRLLPGHNNCNPLTKESIRQKEMESKRLRLLEEDRRKKADTNSDRLFTVNDVKVGGSKYGI  
 INLQSLKPTLKVFMHENLYFTNRKVNVCWASLNHLDSHILLCLMGLAETPGCATLLPASL FVN SHPAG  
 IDRPGMLCSFRIPGAWSCAWSLNIQANNCFTGLSRRVLLTNVVTGHRQSFGTNSDVLAQQFALMAPLLF  
 NGCRSGEIFAIDLRCGNQKGWKATRLFHDSAVTSVRILQDEQYLMASDMAGKIKLWDLRTTKCVRQYEG  
 HVNEYAYLPLHVHEEEGILVAVGQDCYTRIWLSLHDARLLRTIPSPYPASKADIPSVAFSSRLGSSRGAPG  
 LLMAVGQDLYCYSYS

**TR**TRPLEQKLISEEDLAANDILDYKDDDDKV

**Chromatograms:**

[https://cdn.origene.com/chromatograms/mk8059\\_g05.zip](https://cdn.origene.com/chromatograms/mk8059_g05.zip)

**Restriction Sites:**

Sgfl-Mlul

**Cloning Scheme:**


**ACCN:** NM\_181341

**ORF Size:** 1305 bp

**OTI Disclaimer:** The molecular sequence of this clone aligns with the gene accession number as a point of reference only. However, individual transcript sequences of the same gene can differ through naturally occurring variations (e.g. polymorphisms), each with its own valid existence. This clone is substantially in agreement with the reference, but a complete review of all prevailing variants is recommended prior to use. [More info](#)

**OTI Annotation:** This clone was engineered to express the complete ORF with an expression tag. Expression varies depending on the nature of the gene.

**Components:** The ORF clone is ion-exchange column purified and shipped in a 2D barcoded Matrix tube containing 10ug of transfection-ready, dried plasmid DNA (reconstitute with 100 ul of water).

- Reconstitution Method:**
1. Centrifuge at 5,000xg for 5min.
  2. Carefully open the tube and add 100ul of sterile water to dissolve the DNA.
  3. Close the tube and incubate for 10 minutes at room temperature.
  4. Briefly vortex the tube and then do a quick spin (less than 5000xg) to concentrate the liquid at the bottom.
  5. Store the suspended plasmid at -20°C. The DNA is stable for at least one year from date of shipping when stored at -20°C.

**RefSeq:** [NM\\_181341.3](#)

**RefSeq ORF:** 1308 bp

**Locus ID:** 26094

**UniProt ID:** [Q8WV16](#)

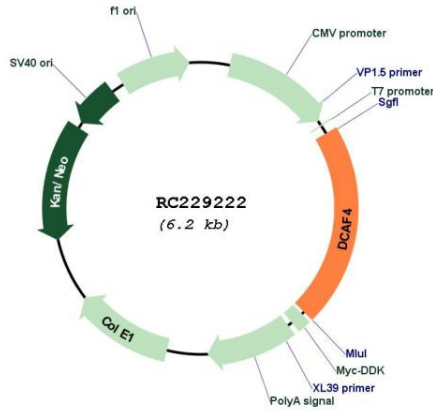
**Cytogenetics:** 14q24.2

**MW:** 48.6 kDa

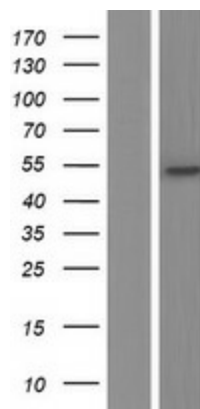
**Gene Summary:**

This gene encodes a WD repeat-containing protein that interacts with the Cul4-Ddb1 E3 ligase macromolecular complex. Multiple alternatively spliced transcript variants have been found for this gene. [provided by RefSeq, Jul 2009]

**Product images:**



Circular map for RC229222



Western blot validation of overexpression lysate (Cat# [LY432243]) using anti-DDK antibody (Cat# [TA50011-100]). Left: Cell lysates from untransfected HEK293T cells; Right: Cell lysates from HEK293T cells transfected with RC229222 using transfection reagent MegaTran 2.0 (Cat# [TT210002]).