

Product datasheet for RC229209

DIPK1C (NM_001044369) Human Tagged ORF Clone

Product data:

Product Type: Expression Plasmids
Product Name: DIPK1C (NM_001044369) Human Tagged ORF Clone
Tag: Myc-DDK
Symbol: DIPK1C
Synonyms: C18orf51; FAM69C
Mammalian Cell Selection: Neomycin
Vector: pCMV6-Entry (PS100001)
E. coli Selection: Kanamycin (25 ug/mL)
ORF Nucleotide Sequence: >RC229209 representing NM_001044369
 Red=Cloning site Blue=ORF Green=Tags(s)

TTTTGTAATACGACTCACTATAGGGCGGCCGGAATTCGTCGACTGGATCCGGTACCGAGGAGATCTGCC
 GCC**CGATCGCC**

ATGGCGCGGGCGGGCGGGCGGGGCCCTGCCGGTGGTGCAGGAGGCGGGCGCTGCGGGCGGGCA
 CGCTCCTCGCCTTCGCCGCTGGACCGCGGGCTGGGTGCTGGCGCCGCGCTGCTGCTCCGCGCGCACCC
 GGGTGTCTCTCCGAGCGCTGCACCGACGAGAAGAGCCGGCGCATCTGGCCGCGCTGTGCCAGGACTAC
 CAGGGCGGCACGCTGGCCGGGACCTCTCGAGGACCTGTGTGTGGCGGGAGAGCTGCTGTTCCAACGCT
 GCCTGCACTACAACAGAGGCAAGAAGGTGCTGCAGGCCGACTGGCGCGGCCGCGCCGTGGTCTCAAGTC
 CAAGGAGGAGGCCCTTCTCCAGCTTCCCGCCCTCAGCCTGTTGGAAGAGGAGGCAGGGGAGGGTGGCCAG
 GACATGCCCGAGGCCGAACCTCTCTGATGGTGGCTGGGAGGTCAAGAGCGCTCTGGCCCTGGAGTTGT
 CCAACAGCAGCCTGGGGCCGTGGTGGCCGGCAGGCGGGGCCACGCTGGCGGGGACAGCTGGCCAGCCT
 GTGGGCCCTGCTGCAGCAGGAGGAGTACGTCTACTTCAGCCTGCTGCAGGACCTGAGCCACACGTGCTG
 CCCGTGCTGGGTTCTGCGGCCACTTCTACGCGGTGGAGTTCTGGCCGCGGGCAGCCCCACCACAGGG
 CACTCTTCCCCCTGGACCGGGCCCCAGGTGCCCTGGGGTGGCCAGGCCAAGGCCATCAGTGACATCGC
 ACTCAGCTTCTTGACATGGTGAACATTTTGACAGTGACTTTTCCCACCGCTCCACCTCTGCGACATC
 AAGCCGAAAACCTTTGCCATCCGGAGCGACTTCACAGTGGTGGCTATTGATGTGGACATGGCCTTTTTTG
 AACCTAAAATGAGGGAAATCCTTGAGCAAACTGCACAGGAGATGAAGACTGCAATTTCTTTGACTGTTT
 TTCAAGATGTGATTTACGAGTCAACAAATGCGGAGCGCAGCGCGTAAACAACAACCTGCAGGTCTCTGT
 GACAAAATATTTCCGCTTTGGTTTTCCGCGCTCTCAAGAGCTCTGCGGTCTCTTTCCAGCTTCACTGCG
 AGTTACAGGAGGCGGTGCAGGAATGTGCAGACCCTGGGGTCCCCAGTGGGAACACCCGGAGAGCAGCCTC
 CAGCGTGTCTGGAAGCTTCGCCAACTCTCAAGCCACACTGAGGGAGCTGCAGGAGGCAGAGAAG

ACGCGTACGCGGCCGCTCGAGCAGAACTCATCTCAGAAGAGGATCTGGCAGCAAATGATATCTGGATT
 ACAAGGATGACGACGATAAGGTTTAA



Protein Sequence: >RC229209 representing NM_001044369
Red=Cloning site Green=Tags(s)

MARAAGARGPAGWCRRRGRCGRGRTLLAFAAWTAGWVLAALLLRAHPGVLSEKTSRRILAALCQDY
 QGGTLAGDLCEDLCVAGELLFQRCLHYNRGKKVLQADWRGRPVVLSKKEEAFSSFPPLSLLEEEAGEGGQ
 DMPEAELLMLVAGEVKSALGLELSNSSLGPWWPGRGPRWRGQLASLWALLQQEEVYVYFSLQLDLSPHVL
 PVLGSCGHFYAVEFLAAGSPHHRALFPLDRAPGAPGGGQAKAISDIASFLDMVNHFDSDFSHRLHLCDI
 KPENFAIRSDFTVVAIDVDMAFFEPMREILEQNCTGDEDCNFFDCF SRCDLRVNKCGAQRVNNNLQVIC
 DKIFRHWFSAPLKSSAVSFQLQLQEAVQECADPGVPSGNTRRAASSVFWKLRQLLQATLRELQEAEK

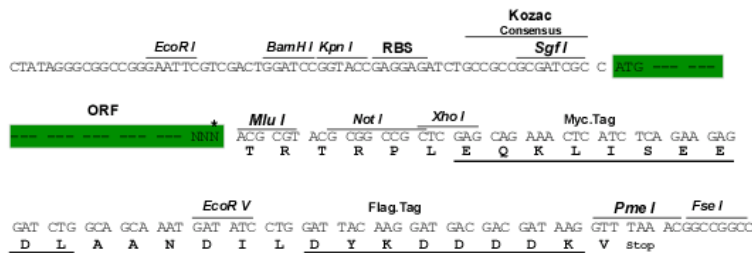
TRTRPLEQKLISEEDLAANDILDYKDDDDKV

Chromatograms: https://cdn.origene.com/chromatograms/mk8058_e10.zip

Restriction Sites: SgfI-MluI

Cloning Scheme:

Cloning sites used for ORF Shuttling:



* The last codon before the Stop codon of the ORF

ACCN: NM_001044369

ORF Size: 1257 bp

OTI Disclaimer: The molecular sequence of this clone aligns with the gene accession number as a point of reference only. However, individual transcript sequences of the same gene can differ through naturally occurring variations (e.g. polymorphisms), each with its own valid existence. This clone is substantially in agreement with the reference, but a complete review of all prevailing variants is recommended prior to use. [More info](#)

OTI Annotation: This clone was engineered to express the complete ORF with an expression tag. Expression varies depending on the nature of the gene.

Components: The ORF clone is ion-exchange column purified and shipped in a 2D barcoded Matrix tube containing 10ug of transfection-ready, dried plasmid DNA (reconstitute with 100 ul of water).

Reconstitution Method:

1. Centrifuge at 5,000xg for 5min.
2. Carefully open the tube and add 100ul of sterile water to dissolve the DNA.
3. Close the tube and incubate for 10 minutes at room temperature.
4. Briefly vortex the tube and then do a quick spin (less than 5000xg) to concentrate the liquid at the bottom.
5. Store the suspended plasmid at -20°C. The DNA is stable for at least one year from date of shipping when stored at -20°C.

RefSeq: [NM_001044369.3](#)

RefSeq ORF: 1260 bp

Locus ID: 125704

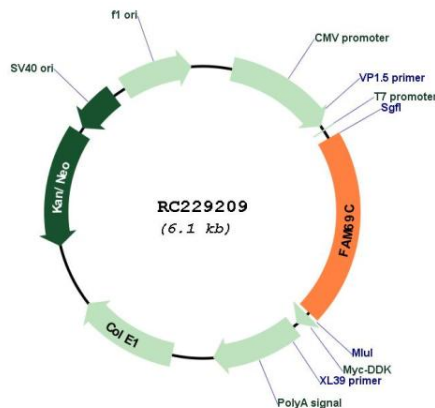
UniProt ID: [Q0P6D2](#)

Cytogenetics: 18q22.3

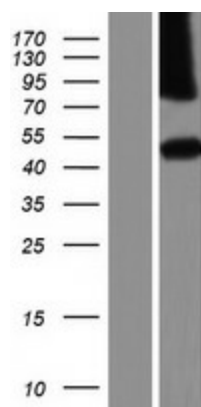
MW: 46.2 kDa

Gene Summary: This gene encodes a member of the FAM69 family of cysteine-rich type II transmembrane proteins. These proteins localize to the endoplasmic reticulum but their specific functions are unknown. [provided by RefSeq, Nov 2011]

Product images:



Circular map for RC229209



Western blot validation of overexpression lysate (Cat# [LY432232]) using anti-DDK antibody (Cat# [TA50011-100]). Left: Cell lysates from untransfected HEK293T cells; Right: Cell lysates from HEK293T cells transfected with RC229209 using transfection reagent MegaTran 2.0 (Cat# [TT210002]).