

Product datasheet for **RC229203**

ATAD3C (NM_001039211) Human Tagged ORF Clone

Product data:

Product Type:	Expression Plasmids
Product Name:	ATAD3C (NM_001039211) Human Tagged ORF Clone
Tag:	Myc-DDK
Symbol:	ATAD3C
Mammalian Cell Selection:	Neomycin
Vector:	pCMV6-Entry (PS100001)
E. coli Selection:	Kanamycin (25 ug/mL)
ORF Nucleotide Sequence:	>RC229203 representing NM_001039211 Red=Cloning site Blue=ORF Green=Tags(s)

TTTTGTAATACGACTCACTATAGGGCGGCCGGGAATTCGTCGACTGGATCCGGTACCGAGGAGATCTGCC
GCC**CGATCGCC**

ATGTCAAAGGACGCCCTGAATCTGGCGCAGATGCAGGAGCAGACGCTGCAGTTGGAGCAACAGTCCAAGC
TCAAACAACCTTGTCATGAGGATTTACGGAAAGCAGGAGGAGTCCGTGCAGAAGCACCATCAGACCTTCTT
GGAGTCCATCAGGGCGGCTGGCACCTTGTGGGAAGGATCCGTGCCTTTGTGACAGACCGGGACAAA
GTGACAGCCACGGTGGCTGGCTGACGCTGCTGGCTGTGGGGTCTACTCAGCCAAGAATGCGACAGCCC
TCACTGGCCGCTACATCGAGGCTCGGCTGGGGAAGCCGTCCTAGTGAGGAGACGTCCTCCGATCACGGT
GCTTGAGGCGCTGCGGCACCCCATCCAGCAGGTCAGCCGGCGGCTCCTCAGTCGACCCAGGACGTGCTG
GAGGGTGTGTGCTTAGTCCCAGCCTGGAAGCACGGGTGCGCGACATCGCCATAATGACAAGGAACATCA
AGAAGAACCAGGGCCTGTACAGGCACATCCTGCTGTACGGGCCACCAGGCACCGGAAGACGCTGTTTGC
CAAGAACTCGCCCTGCACTCAGGCATGGACTACGCCATCATGACAGGCGGGGACGTGGCCCCATGGGG
CGGGAAGGCGTGACCGCCATGCACAAGCTTTGACTGGGCAATACCAGCCGGCGCGGCTCCTGCTCT
TTGTGGATGAAGCGGACGCTTCTTTCGGAAGCGAGCCACTGAGAAGATAAGCGAGGACCTCAGGGCCAC
ACTGAACGCTTCTGTACCGCACGGGCCAGCACAGCAACAAATTCATGCTGATCCTGGCCAGCTGCCAC
CCCAGCAGTTTCGACTGGCCATCAATGCCTGCATCGACGTGATGGTCCACTTCGACCTGCCAGGGCAGG
AGGAGCGGGCGCCCTGGTGAGAATGTATCTTAACGAGTATGTTCTTAAGCCGGCCACAGAAGGAAAGCG
GCGTCTGAAGCTGGCCAGTTTGTACTACGGGAGGAAGTGCTTAGAGATCGCTCGGCTGACAGAGGGCATG
TCATGCCGGAAGATCGCACAGCTGGCCGTGTCCTGGCAGGCCACGGCGTATGCCTCCAAGGACGGGGTCC
TGACCGAGGCCATGATGGACGCTGCGTGCAAGACTTTGTCCAGCAGCACCAGCAGATGATGCGCTGGCT
GAAGGGGGAGAGGCTGGGCCGAGGACGAGCAACCTCATCC

ACGCGTACGCGGGCGCTCGAGCAGAACTCATCTCAGAAGAGGATCTGGCAGCAATGATATCCTGGATT
ACAAGGATGACGACGATAAGGTTTAA



Protein Sequence: >RC229203 representing NM_001039211
Red=Cloning site Green=Tags(s)

```
MSKDALNLAQMQEQLQLEQQSKLKQLVNEDLRKQEE SVQKHHQTFLESIRAAGTLFGEGFRAVFTDRDK
VTATVAGL TLLAVGVYSAKNATAVTGRYIEARLGKPSLVRETSRITVLEALRHP IQQVSRRLSRPQDVL
EGVVLSPSLEARVRDIAIMTRNIKKNRGLYRHILLYGPPGTGKTLFAKKLALHSGMDYAIMTGGDVAPMG
REGVTAMHKLFDWANTSRRGLLLFVDEADAF LRKRATEKISEDLRATLNAFLYRTGQHSNKFMLILASCH
PEQFDWAINACIDVMVHFDLPGQEERARLV RMYLNEYVLKPATEGKRRLKLAQFDYGRKCLEIARL TEGM
SCRKIAQLAVSWQATAYASKDGLVTEAMMDACVQDFVQQHQMMRWLKG ERP GPEDEQPSS
```

TRTRPLEQKLISEEDLAANDILDYKDDDDKV

Chromatograms: https://cdn.origene.com/chromatograms/mk8058_b02.zip

Restriction Sites: SgfI-MluI

Cloning Scheme:

Cloning sites used for ORF Shuttling:



* The last codon before the Stop codon of the ORF

ACCN: NM_001039211

ORF Size: 1233 bp

OTI Disclaimer: The molecular sequence of this clone aligns with the gene accession number as a point of reference only. However, individual transcript sequences of the same gene can differ through naturally occurring variations (e.g. polymorphisms), each with its own valid existence. This clone is substantially in agreement with the reference, but a complete review of all prevailing variants is recommended prior to use. [More info](#)

OTI Annotation: This clone was engineered to express the complete ORF with an expression tag. Expression varies depending on the nature of the gene.

Components: The ORF clone is ion-exchange column purified and shipped in a 2D barcoded Matrix tube containing 10ug of transfection-ready, dried plasmid DNA (reconstitute with 100 ul of water).

- Reconstitution Method:**
1. Centrifuge at 5,000xg for 5min.
 2. Carefully open the tube and add 100ul of sterile water to dissolve the DNA.
 3. Close the tube and incubate for 10 minutes at room temperature.
 4. Briefly vortex the tube and then do a quick spin (less than 5000xg) to concentrate the liquid at the bottom.
 5. Store the suspended plasmid at -20°C. The DNA is stable for at least one year from date of shipping when stored at -20°C.

RefSeq: [NM_001039211.3](#)

RefSeq ORF: 1236 bp

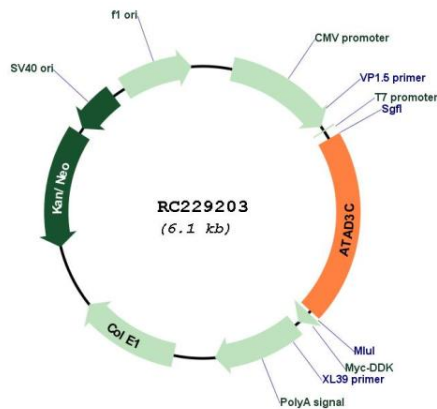
Locus ID: 219293

UniProt ID: [Q5T2N8](#)

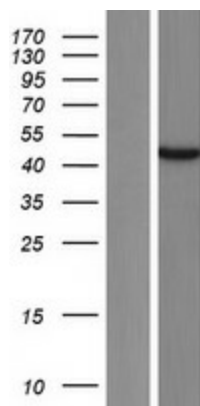
Cytogenetics: 1p36.33

MW: 46.2 kDa

Product images:



Circular map for RC229203



Western blot validation of overexpression lysate (Cat# [LY432226]) using anti-DDK antibody (Cat# [TA50011-100]). Left: Cell lysates from untransfected HEK293T cells; Right: Cell lysates from HEK293T cells transfected with RC229203 using transfection reagent MegaTran 2.0 (Cat# [TT210002]).