

## Product datasheet for RC229200

### HOXA10 (NM\_018951) Human Tagged ORF Clone

#### Product data:

Product Type:	Expression Plasmids
Product Name:	HOXA10 (NM_018951) Human Tagged ORF Clone
Tag:	Myc-DDK
Symbol:	HOXA10
Synonyms:	HOX1; HOX1.8; HOX1H; PL
Mammalian Cell Selection:	Neomycin
Vector:	pCMV6-Entry (PS100001)
E. coli Selection:	Kanamycin (25 ug/mL)
ORF Nucleotide Sequence:	>RC229200 representing NM_018951 Red=Cloning site Blue=ORF Green=Tags(s)

TTTTGTAATACGACTCACTATAGGGCGGCCGGAATTCGTCGACTGGATCCGGTACCGAGGAGATCTGCC  
GCC**CGATCGCC**

ATGTCAGCCAGAAAGGGCTATCTGCTCCCTTCGCCAAATTATCCACAACAATGTCATGCTCGGAGAGCC  
CCGCCCGAACTTTTTTGGTCGACTCGCTCATCAGCTCGGGCAGAGGGCAGGCAGGCGGGTGGTGG  
TGGCGCGGGGGCGGGCGGTGGCGTTACTACGCCACGGCGGGTCTACCTGCCGCCGCCCGAC  
CTGCCCTACGGGCTGCAGAGCTGCGGGCTTCCCCACGCTGGGGCAAGCGCAATGAGGCAGCGTCGC  
CGGGCAGCGGTGGCGGTGGCGGGTCTAGGTCCCGGGCGCACGGCTACGGCCCTCGCCATAGACCT  
GTGGCTAGACGCGCCCGGTCTTGCCGGATGGAGCCGCTGACGGGCCGCGCCGCCCGCCAGCAGCAG  
CCGCCGCCCGCCGCAACCACCCAGCCAGCGCCGCGAGGCCACCTCGTGCTTTTCGCGCAGAATCA  
AAGAAGAGAGCTCCTACTGCCTCTACGACTCGGCGGACAAATGCCCAAAGTCTCGGCCACCGCCCGCA  
ACTGGCTCCCTTCCCGCGGGGCCCGCCGCCGACGGCTGCGCCCTGGGCACCTCCAGCGGGTGGCAGTG  
CCTGGCTACTTCCGCTTTCTCAGGCCTACGGCACCGCAAGGGCTATGGCAGCGGGCGGGCGGCGCG  
AGCAACTCGGGGCTGGCCGTTCCCGCGCAGCCCCGGGGCGCGGTTTCGATCTCCCGCCGCGTAGC  
CTCCGGCTCGGCCGATGCGGCCCGGAAGGAGCGAGCCCTCGATTGCGCCGCCCGCCACGCTGGCTTGC  
GGCAGCGGGGGGCTCGCAGGGCGACGAGGAGCGCACGGCTCGTCTCGGCCGCGGAGGAGCTCTCC  
CGGCCCTTCCGAGAGCAGCAAAGCCTCGCCGGAGAAGGATTCCCTGGCAATTCCAAAGGTGAAAACGC  
AGCCAAGTGGCTCACGGCAAAGAGTGGTCGGAAGAAGCGCTGCCCTACACGAAGCACCAGACTGGAG  
CTGGAGAAGGAGTTTCTGTTCAATATGTACCTTACTCGAGAGCGGCGCTAGAGATTAGCCGACGCTCC  
ACCTCACGGACAGACAAGTGAATCTGGTTTCAGAACCAGGATGAACTGAAGAAAATGAATCGAGA  
AAACCGGATCCGGGAGCTCACAGCCAACTTAATTTTTCC

AG**CGGACCG**ACGCGTACGCGGCCGCTCGAGCAGAAACTCATCTCAGAAGAGGATCTGGCAGCAAATGATATCC  
TGGATTACAAGGATGACGACGATAAGGTTTAA



[View online »](#)

**Protein Sequence:** >RC229200 representing NM\_018951  
Red=Cloning site Green=Tags(s)

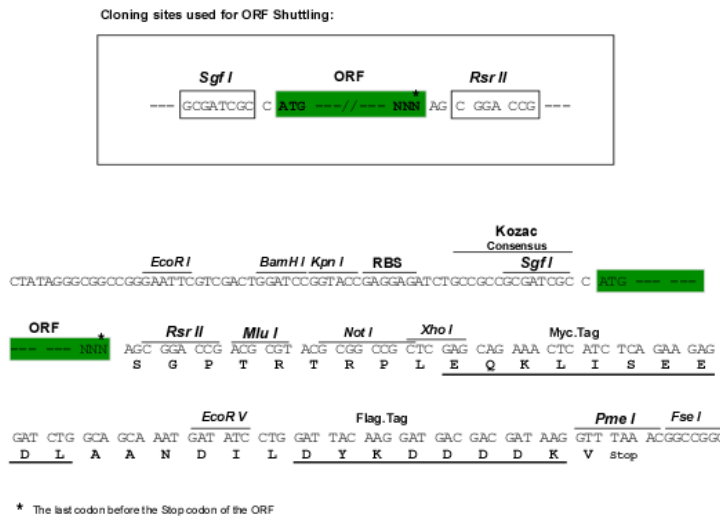
MSARKGYLLPSNYPTTMSCESPAANSFLVDSL I SSGRGEAGGGGGGAGGGGGGGYYAHGGVYLPPAAD  
 LPYGLQSCGLFPTLGGKRNEAASPGSGGGGGGLGPGAHGYPSPIDLWLDAPRSCRMPPDGP PPPPPQQQ  
 PPPPPQQQPAPQATSCSFAQNIKEESSYCLYDSADKCPKVSATAELAPFPRGPPPDGCALGTSSGVPV  
 PGYFRLSQAYGTAKGYSGGGGAQQLGAGPFPAQPPGRGFDLPPALASGSADAARKERALDSPPPPTLAC  
 GSGGGSQGD EEAHSSAAEELSPAPSESSKASPEKDSL GNSKGENAANWLTAKSGRKKRCPYTKHQ TLE  
 LEKEFLFNMYLTRERRLEISRSVHLTDRQVKIWFQNRMRMLKMKMRENRIRELTANFNFS

SGPTRTRRLEQKLI SEEDLAANDILDYKDDDDKV

**Chromatograms:** [https://cdn.origene.com/chromatograms/mk8058\\_a05.zip](https://cdn.origene.com/chromatograms/mk8058_a05.zip)

**Restriction Sites:** SgfI-RsrII

**Cloning Scheme:**



**ACCN:** NM\_018951

**ORF Size:** 1230 bp

**OTI Disclaimer:** The molecular sequence of this clone aligns with the gene accession number as a point of reference only. However, individual transcript sequences of the same gene can differ through naturally occurring variations (e.g. polymorphisms), each with its own valid existence. This clone is substantially in agreement with the reference, but a complete review of all prevailing variants is recommended prior to use. [More info](#)

**OTI Annotation:** This clone was engineered to express the complete ORF with an expression tag. Expression varies depending on the nature of the gene.

**Components:** The ORF clone is ion-exchange column purified and shipped in a 2D barcoded Matrix tube containing 10ug of transfection-ready, dried plasmid DNA (reconstitute with 100 ul of water).

**Reconstitution Method:**

1. Centrifuge at 5,000xg for 5min.
2. Carefully open the tube and add 100ul of sterile water to dissolve the DNA.
3. Close the tube and incubate for 10 minutes at room temperature.
4. Briefly vortex the tube and then do a quick spin (less than 5000xg) to concentrate the liquid at the bottom.
5. Store the suspended plasmid at -20°C. The DNA is stable for at least one year from date of shipping when stored at -20°C.

**RefSeq:** [NM\\_018951.4](#)

**RefSeq ORF:** 1233 bp

**Locus ID:** 3206

**UniProt ID:** [P31260](#)

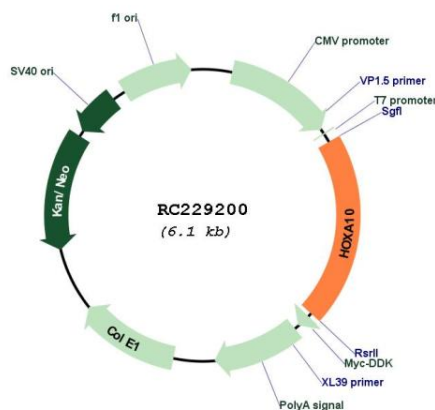
**Cytogenetics:** 7p15.2

**Protein Families:** Transcription Factors

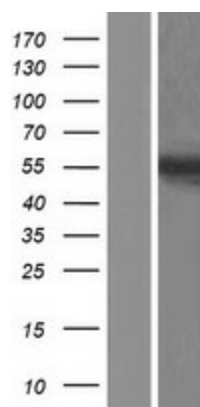
**MW:** 42.2 kDa

**Gene Summary:** In vertebrates, the genes encoding the class of transcription factors called homeobox genes are found in clusters named A, B, C, and D on four separate chromosomes. Expression of these proteins is spatially and temporally regulated during embryonic development. This gene is part of the A cluster on chromosome 7 and encodes a DNA-binding transcription factor that may regulate gene expression, morphogenesis, and differentiation. More specifically, it may function in fertility, embryo viability, and regulation of hematopoietic lineage commitment. Alternatively spliced transcript variants have been described. Read-through transcription also exists between this gene and the downstream homeobox A9 (HOXA9) gene. [provided by RefSeq, Mar 2011]

### Product images:



Circular map for RC229200



Western blot validation of overexpression lysate (Cat# [LY432224]) using anti-DDK antibody (Cat# [TA50011-100]). Left: Cell lysates from untransfected HEK293T cells; Right: Cell lysates from HEK293T cells transfected with RC229200 using transfection reagent MegaTran 2.0 (Cat# [TT210002]).