

Product datasheet for RC229185

APOBEC3D (NM_152426) Human Tagged ORF Clone

Product data:

Product Type:	Expression Plasmids
Product Name:	APOBEC3D (NM_152426) Human Tagged ORF Clone
Tag:	Myc-DDK
Symbol:	APOBEC3D
Synonyms:	A3D; A3DE; APOBEC3DE; APOBEC3E; ARP6
Mammalian Cell Selection:	Neomycin
Vector:	pCMV6-Entry (PS100001)
E. coli Selection:	Kanamycin (25 ug/mL)
ORF Nucleotide Sequence:	>RC229185 representing NM_152426 Red=Cloning site Blue=ORF Green=Tags(s)

TTTTGTAATACGACTCACTATAGGGCGGCCGGAATTCGTCGACTGGATCCGGTACCGAGGAGATCTGCC
GCC**CGATCGCC**

ATGAATCCACAGATCAGAAATCCGATGGAGCGGATGTATCGAGACACATTCTACGACAACCTTTGAAAACG
AACCCATCCTCTATGGTCGGAGCTACACTTGGCTGTGCTATGAAGTAAAATAAGAGGGGCCGCTCAA
TCTCCTTTGGGACACAGGGTCTTTTCGAGGCCGGTACTACCCAAACGTCAGTCGAATCACAGGCAGGAG
GTGATTTCCGGTTTGAGAACCACGCAGAAATGTCTTCTATCTTGGTCTGTGGCAACCGACTGCCTG
CTAACAGGCGCTCCAGATCACCTGGTTGTATCATGGAACCCCTGCCTGCCCTGTGTGGTGAAGGTGAC
CAAATCTTGGCTGAGCACCCCAATGTCACCCTGACCATCTCTGCCGCCCGCCTCTACTACTACCGGGAT
AGAGATTGGCGGTGGGTGCTCCTCAGGCTGCATAAGGCAGGGGCCCGTGTGAAGATCATGGACTATGAAG
ACTTTGCATACTGCTGGGAAAACCTTTGTGTGCAATGAAGGTCAGCCATTCATGCCTTGGTACAAATTCGA
TGACAATTATGCATCCCTGCACCGCACGCTAAAGGAGATTCTCAGAAACCCGATGGAGGCAATGTACCCA
CACATATTCTACTTCCACTTTAAAACTACTGAAAGCCTGTGGTCGGAACGAAAGCTGGCTGTGCTTCA
CCATGGAAGTTACAAAGCACCCTCAGCTGTCTCCGGAAGAGGGGCGTCTCCGAAACCCAGGTGGATCC
TGAGACCCATTGTCATGCAGAAAGGTGCTTCTCTCTTGGTCTGTGACGACATACTGTCTCCTAACACA
AACTACGAGGTCACCTGGTACACATCTTGGAGCCCTTGCCAGAGTGTGCAGGGAGGTGGCCGAGTTCC
TGGCCAGGCACAGCAACGTGAATCTCACCATCTTACCAGCCCGCCTCTGCTACTTCTGGGATACAGATTA
CCAGGAGGGGCTCTGCAGCCTGAGTCAGGAAGGGCCCTCCGTGAAGATCATGGGCTACAAAGATTTGTA
TCTTGTGGAAAACTTTGTGTACAGTGTGATGAGCCATTCAAGCCTTGAAGGGACTACAAACCAACT
TTCGACTTCTGAAAAGAAGGCTACGGGAGATTCTCCAG

ACGCGTACGCGGCCGCTCGAGCAGAAACTCATCTCAGAAGAGGATCTGGCAGCAATGATATCCTGGATT
ACAAGGATGACGACGATAAGGTTTAA



[View online >](#)

Protein Sequence: >RC229185 representing NM_152426
Red=Cloning site Green=Tags(s)

MNPQIRNPMERMYRDTFYDNFENEPILYGRSYTWLCYEVKIKRGRSNLLWDTGVFRGPVLPKRQSNHRQE
 VYFRFENHAEMCFLSWFCGNRLPANRRFQITWFVSWNPCLPCVVKVTKFLAEHPNVTLTISAARLYYYRD
 RDWRWVLLRLHKAGARVKIMDYEDFAYCWENFVCNEGQPFMPWYKFDDNYASLHRTLKEILRNPEAMYP
 HIFYFHFNLLKACGRNESWLCFTMEVTKHHSVFRKRGVFRNQVDPETHCHAERCFLSWFCDDILSPNT
 NYEVTWYTSWSPCECAGEVAEFLARHSNVNLTIFTARLCYFWDTDYQEGLCSLSQEGASVKIMGYKDFV
 SCWKNFVYSDDEPFKPKWGLQTNFRLLRLLREILQ

TRTRPLEQKLISEEDLAANDILDYKDDDDKV

Chromatograms: https://cdn.origene.com/chromatograms/mk8036_a12.zip

Restriction Sites: SgfI-MluI

Cloning Scheme:



ACCN: NM_152426

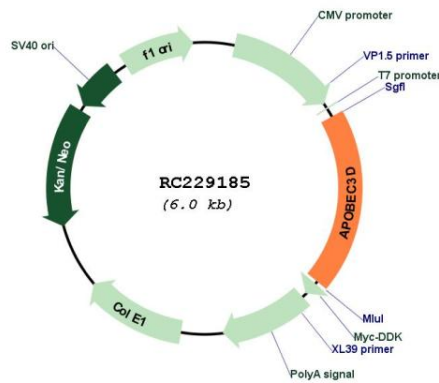
ORF Size: 1158 bp

OTI Disclaimer: Due to the inherent nature of this plasmid, standard methods to replicate additional amounts of DNA in E. coli are highly likely to result in mutations and/or rearrangements. Therefore, OriGene does not guarantee the capability to replicate this plasmid DNA. Additional amounts of DNA can be purchased from OriGene with batch-specific, full-sequence verification at a reduced cost. Please contact our customer care team at custsupport@origene.com or by calling 301.340.3188 option 3 for pricing and delivery.

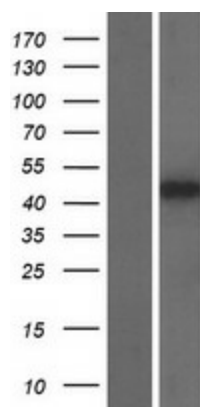
The molecular sequence of this clone aligns with the gene accession number as a point of reference only. However, individual transcript sequences of the same gene can differ through naturally occurring variations (e.g. polymorphisms), each with its own valid existence. This clone is substantially in agreement with the reference, but a complete review of all prevailing variants is recommended prior to use. [More info](#)

OTI Annotation:	This clone was engineered to express the complete ORF with an expression tag. Expression varies depending on the nature of the gene.
Components:	The ORF clone is ion-exchange column purified and shipped in a 2D barcoded Matrix tube containing 10ug of transfection-ready, dried plasmid DNA (reconstitute with 100 ul of water).
Reconstitution Method:	<ol style="list-style-type: none"> 1. Centrifuge at 5,000xg for 5min. 2. Carefully open the tube and add 100ul of sterile water to dissolve the DNA. 3. Close the tube and incubate for 10 minutes at room temperature. 4. Briefly vortex the tube and then do a quick spin (less than 5000xg) to concentrate the liquid at the bottom. 5. Store the suspended plasmid at -20°C. The DNA is stable for at least one year from date of shipping when stored at -20°C.
RefSeq:	<u>NM_152426.4</u>
RefSeq ORF:	1161 bp
Locus ID:	140564
Cytogenetics:	22q13.1
MW:	46.4 kDa
Gene Summary:	This gene is a member of the cytidine deaminase gene family. It is one of a group of related genes found in a cluster, thought to result from gene duplication, on chromosome 22. Members of the cluster encode proteins that are structurally and functionally related to the C to U RNA-editing cytidine deaminase APOBEC1 and inhibit retroviruses, such as HIV, by deaminating cytosine residues in nascent retroviral cDNA. [provided by RefSeq, Jul 2008]

Product images:



Circular map for RC229185



Western blot validation of overexpression lysate (Cat# [LY432209]) using anti-DDK antibody (Cat# [TA50011-100]). Left: Cell lysates from untransfected HEK293T cells; Right: Cell lysates from HEK293T cells transfected with RC229185 using transfection reagent MegaTran 2.0 (Cat# [TT210002]).