

Product datasheet for RC229176

PCBP3 (NM_020528) Human Tagged ORF Clone

Product data:

Product Type:	Expression Plasmids
Product Name:	PCBP3 (NM_020528) Human Tagged ORF Clone
Tag:	Myc-DDK
Symbol:	PCBP3
Synonyms:	ALPHA-CP3; PCBP3-OT1; PCBP3OT
Mammalian Cell Selection:	Neomycin
Vector:	pCMV6-Entry (PS100001)
E. coli Selection:	Kanamycin (25 ug/mL)
ORF Nucleotide Sequence:	>RC229176 representing NM_020528 Red=Cloning site Blue=ORF Green=Tags(s)

TTTTGTAATACGACTCACTATAGGGCGCCGGGAATTCGTCGACTGGATCCGGTACCGAGGAGATCTGCC
GCC**CGATCGCC**

ATGGGGGAAGGTGACGCCTTCTGGGCCCATCTGTCTTCTCACAGCACCCCTCAGCACCTTAAGCCACC
ACCCTCAGCCACAATTTGGCAGAAGGATGGAGTCCAAGGTCTCAGAAGGTGGCCTGAATGTGACCCTCAC
CATCCGCTGCTGATGCATGGAAAGGAAGTTGGAAGCATCATCGGAAGAAAGGAGAACTGTGAAGAAG
ATGCGTGAGGAGAGTGGTCAAGGATCAACATCTCAGAGGGAACTGCCAGAGAGGATTGTGACCATCA
CAGGCCCCACAGACGCCATCTTCAAGGCCTTTGCCATGATCGCATACAAGTTTGAGGAGGATATCATCAA
CTCCATGAGCAACAGCCCTGCCACCAGCAAGCCCCAGTGACGCTGAGGCTGGTGGTGCCTGCCAGCCAG
TGTGGTCCCTGATCGGCAAAGGAGGCTCCAAGATCAAGGAGATCAGGGAGTCCACAGGTGCCAGGTGC
AGGTGGCTGGGGACATGCTGCCAACTCCACGGAGCGAGCGGTGACCATCTCGGGACCCAGATGCCAT
CATCCAGTGCCTCAAGCAGATCTGTGTGGTCTGCTGGAGTCCCCACCGAAAGGTGCCACCATCCCTAC
CGCCAAAGCCCGCTCCACCCCTGTCAATTTTGCAGGTGGTCAAGCCTACACAATCCAGGGACAGTATG
CCATCCCTCACCCGGATCAGTTGACCAAGCTCCACCAAGTTGGCCATGCAGCAAACCCCTTTCCTCCCT
CGGACAGACCAACCCCGCTTTCCCGGAGAAAAGCTGCCTTTACACTCCTCCGAAGAAGCTCAAAATCTG
ATGGCCAGTCAACAGTCTGGACGCCAGCCACCGCCAGCACTATGAGCTCACCATTCCCAATGATC
TAATAGGCTGCATAATTGGACGCCAAGGGACCAAAATCAATGAAATTCGACAGATGTCTGGAGCTCAGAT
CAAAATCGCCAACGCCACGGAAGGGTCTCAGAGCGTCAGATCACCATCACGGGGACCCCGCCAACATC
AGCCTTGCCAGTATCTCATCAACGCCAGGCTGACGTCCGAGGTACCGGGATGGGCACGCTG

ACGCGTACGCGGCCGCTCGAGCAGAACTCATCTCAGAAGAGGATCTGGCAGCAATGATATCCTGGATT
ACAAGGATGACGACGATAAGGTTAA



[View online »](#)

Protein Sequence: >RC229176 representing NM_020528
Red=Cloning site Green=Tags(s)

MGEGDAFWAPSVLPHSTLSTLSHHPQPQFGRRMESKVSEGLNVTLTIRLLMHGKEVGSIGKKGETVKK
MREESGARINISEGNCPERIVTITGPTDAIFKAFAMIAYKFEEDIINSMNSPATSKPPVTLRLVVPASQ
CGSLIGKGGSKIKEIRESTGAQVQVAGDMLPNSTERAVTISGTPDAIIQCVKQICVVMLESPPKGATIPY
RPKPASTPVIFAGGQAYTIQQQYAIPHPDQLTKLHQLAMQQTPFPPLGQTNPAFPGEKLP LHSSEEAQNL
MGQSSGLDASPPASTHELTI PNDLIGCIIGRQGTKINEIRQMSGAQIKIANATEGSSERQITITGTPANI
SLAQYLINARLTSEVTGMGTL

TRTRPLEQKLISEEDLAANDILDYKDDDDKV

Chromatograms: https://cdn.origene.com/chromatograms/mk8036_b01.zip

Restriction Sites: SgfI-MluI

Cloning Scheme:



ACCN: NM_020528

ORF Size: 1113 bp

OTI Disclaimer: The molecular sequence of this clone aligns with the gene accession number as a point of reference only. However, individual transcript sequences of the same gene can differ through naturally occurring variations (e.g. polymorphisms), each with its own valid existence. This clone is substantially in agreement with the reference, but a complete review of all prevailing variants is recommended prior to use. [More info](#)

OTI Annotation: This clone was engineered to express the complete ORF with an expression tag. Expression varies depending on the nature of the gene.

Components: The ORF clone is ion-exchange column purified and shipped in a 2D barcoded Matrix tube containing 10ug of transfection-ready, dried plasmid DNA (reconstitute with 100 ul of water).

Reconstitution Method:

1. Centrifuge at 5,000xg for 5min.
2. Carefully open the tube and add 100ul of sterile water to dissolve the DNA.
3. Close the tube and incubate for 10 minutes at room temperature.
4. Briefly vortex the tube and then do a quick spin (less than 5000xg) to concentrate the liquid at the bottom.
5. Store the suspended plasmid at -20°C. The DNA is stable for at least one year from date of shipping when stored at -20°C.

RefSeq: [NM_020528.3](#)

RefSeq ORF: 1116 bp

Locus ID: 54039

UniProt ID: [P57721](#)

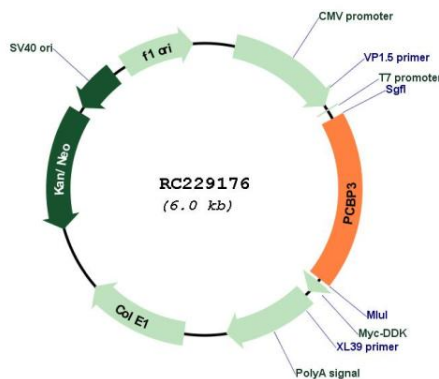
Cytogenetics: 21q22.3

Domains: KH

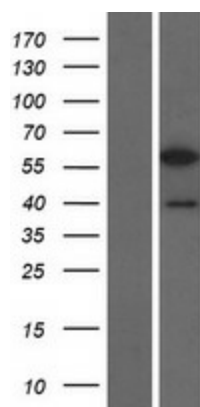
MW: 39.3 kDa

Gene Summary: This gene encodes a member of the KH-domain protein subfamily. Proteins of this subfamily, also referred to as alpha-CPs, bind to RNA with a specificity for C-rich pyrimidine regions. Alpha-CPs play important roles in post-transcriptional activities and have different cellular distributions. The protein encoded by this gene lacks the nuclear localization signals found in other subfamily members. Alternative splicing results in multiple transcript variants encoding distinct isoforms. [provided by RefSeq, Jan 2017]

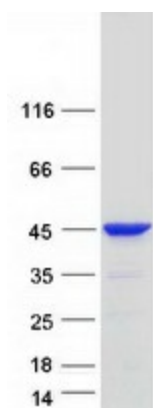
Product images:



Circular map for RC229176



Western blot validation of overexpression lysate (Cat# [LY432200]) using anti-DDK antibody (Cat# [TA50011-100]). Left: Cell lysates from untransfected HEK293T cells; Right: Cell lysates from HEK293T cells transfected with RC229176 using transfection reagent MegaTran 2.0 (Cat# [TT210002]).



Coomassie blue staining of purified PCBP3 protein (Cat# [TP329176]). The protein was produced from HEK293T cells transfected with PCBP3 cDNA clone (Cat# RC229176) using MegaTran 2.0 (Cat# [TT210002]).