

## Product datasheet for RC229162

### C6orf134 (ATAT1) (NM\_024909) Human Tagged ORF Clone

#### Product data:

Product Type:	Expression Plasmids
Product Name:	C6orf134 (ATAT1) (NM_024909) Human Tagged ORF Clone
Tag:	Myc-DDK
Symbol:	C6orf134
Synonyms:	alpha-TAT; alpha-TAT1; C6orf134; MEC17; Nbla00487; TAT
Mammalian Cell Selection:	Neomycin
Vector:	pCMV6-Entry (PS100001)
E. coli Selection:	Kanamycin (25 ug/mL)
ORF Nucleotide Sequence:	>RC229162 representing NM_024909 Red=Cloning site Blue=ORF Green=Tags(s)

TTTTGTAATACGACTCACTATAGGGCGGCCGGAATTCGTCGACTGGATCCGGTACCGAGGAGATCTGCC  
GCC**CGATCGCC**

ATGGAGTTCCTCGATGTGGACGCGCTGTTCCGGAGCGGATCACGGTCTGGACCAGCACCTGAGGC  
CCCCAGCCCGCCGACCCGGAACCAACGCCGGCCGTGTTGATCTACAGCAGCAAATTATGACCATTAT  
AGATGAACTGGCAAGGCTTCTGCCAAGGCCAGAATCTTCCGCTCCTACTAGTGCATCAAGGATG  
CAGAGTAACCGCCATGTTGTTTATATTCTCAAAGACAGTTCAGCCCGACCGGCTGGAAAAGGAGCCATTA  
TTGGTTTCATCAAAGTTGGATAACAAGAAGCTCTTGTACTGGATGATCGTGAGGCTCATAATGAGGTAGA  
ACCACTTTGCATCCTGGACTTTTACATCCATGAGTCTGTGCAACGCCATGGCCATGGGCGAGAAGCTTTC  
CAGTATATGTTGAGAAGGAGCGAGTGGAAACCGCACCAACTGGCAATTGACCGACCTCACAGAAGCTGC  
TGAAATTCCTGAATAAGCACTACAATCTGGAGACCACAGTCCCACAGGTGAACAACCTTTGTGATCTTTGA  
AGGCTTCTTTGCCATCAACATCGGCCCTGCTCCCTCTCTGAGGGCAACTCGACACTCTCGTGTCTGCT  
GCAGTCGATCCCACGCCGCTGCTCCAGCAAGGAAGCTGCCACCAAGAGAGCAGAGGGAGACATCAAGC  
CATACTCCTCTAGTGACCGAGAATTTCTGAAGGTAGCTGTGGAGCCTCCTTGCCCTAACAGGGCCCC  
TCGCCCGCCACACCTCCAGCCACCCACCCCGCTCCAGCAGCCTGGGAACTCACCAGAACGAGGT  
CCCCTCCGCCCTTTGTGCCAGAGCAGGAGCTGCTGCGTTCCTTGCCCTCTGCCCCACACCCCTACCG  
CCCGCTTCTGTTGGCTGCTGACCTGGGGCAGCCAGCTCAACGTGTCGCACCAGCTCCCTTCCCGG  
CTCTGAGGAGAGTCGATAC

**ACGCGT**ACGCGGCCGCTCGAGCAGAACTCATCTCAGAAGAGGATCTGGCAGCAAATGATATCCTGGATT  
ACAAGGATGACGACGATAAGGTTTAA



[View online »](#)

**Protein Sequence:** >RC229162 representing NM\_024909  
Red=Cloning site Green=Tags(s)

```
MEFPPFDVDALFPERITVLDQHLRPPARRPGTTTPARVDLQQQIMTIIDELGKASAKAQNLSAPITSASRM
QSNRHVVYILKSSARPAGKGAIGFIKVGKLLFVLDREAHNEVEPLCILDYIHEVQRHGHGREL
FYMLQKERVEPHQLAIDRPSQKLLKFLNKHYNLETTVPQVNNFVIFEGFFAHQHRPPAPSLRATRHSRAA
AVDPTPAAPARKLPPKRAEGDIKPYSSSDREFLKVAVEPPWPLNRAPRRATPPAHPPPRSSSLGNSPERG
PLRPFVPEQELLRSLRLCPPHTARLLL AADPGGSPAQRRTSSLPRSEESRY
```

TRTRPLEQKLISEEDLAANDILDYKDDDDKV

**Chromatograms:** [https://cdn.origene.com/chromatograms/mk8052\\_h04.zip](https://cdn.origene.com/chromatograms/mk8052_h04.zip)

**Restriction Sites:** SgfI-MluI

**Cloning Scheme:**



**ACCN:** NM\_024909

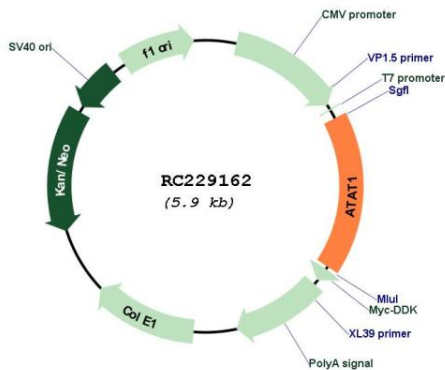
**ORF Size:** 999 bp

**OTI Disclaimer:** Due to the inherent nature of this plasmid, standard methods to replicate additional amounts of DNA in E. coli are highly likely to result in mutations and/or rearrangements. Therefore, OriGene does not guarantee the capability to replicate this plasmid DNA. Additional amounts of DNA can be purchased from OriGene with batch-specific, full-sequence verification at a reduced cost. Please contact our customer care team at [custsupport@origene.com](mailto:custsupport@origene.com) or by calling 301.340.3188 option 3 for pricing and delivery.

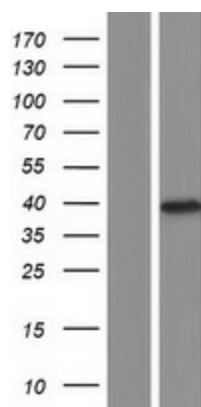
The molecular sequence of this clone aligns with the gene accession number as a point of reference only. However, individual transcript sequences of the same gene can differ through naturally occurring variations (e.g. polymorphisms), each with its own valid existence. This clone is substantially in agreement with the reference, but a complete review of all prevailing variants is recommended prior to use. [More info](#)

<b>OTI Annotation:</b>	This clone was engineered to express the complete ORF with an expression tag. Expression varies depending on the nature of the gene.
<b>Components:</b>	The ORF clone is ion-exchange column purified and shipped in a 2D barcoded Matrix tube containing 10ug of transfection-ready, dried plasmid DNA (reconstitute with 100 ul of water).
<b>Reconstitution Method:</b>	<ol style="list-style-type: none"> <li>1. Centrifuge at 5,000xg for 5min.</li> <li>2. Carefully open the tube and add 100ul of sterile water to dissolve the DNA.</li> <li>3. Close the tube and incubate for 10 minutes at room temperature.</li> <li>4. Briefly vortex the tube and then do a quick spin (less than 5000xg) to concentrate the liquid at the bottom.</li> <li>5. Store the suspended plasmid at -20°C. The DNA is stable for at least one year from date of shipping when stored at -20°C.</li> </ol>
<b>Note:</b>	Plasmids are not sterile. For experiments where strict sterility is required, filtration with 0.22um filter is required.
<b>RefSeq:</b>	<a href="#">NM_024909.4</a>
<b>RefSeq ORF:</b>	1002 bp
<b>Locus ID:</b>	79969
<b>UniProt ID:</b>	<a href="#">Q5SQI0</a>
<b>Cytogenetics:</b>	6p21.33
<b>MW:</b>	37.9 kDa
<b>Gene Summary:</b>	This gene encodes a protein that localizes to clathrin-coated pits, where it acetylates alpha tubulin on lysine 40. This process may be important in microtubule growth, for instance during chemotaxis and the formation of cilium. Alternative splicing results in multiple transcript variants. [provided by RefSeq, Jan 2016]

### Product images:



Circular map for RC229162



Western blot validation of overexpression lysate (Cat# [LY432186]) using anti-DDK antibody (Cat# [TA50011-100]). Left: Cell lysates from untransfected HEK293T cells; Right: Cell lysates from HEK293T cells transfected with RC229162 using transfection reagent MegaTran 2.0 (Cat# [TT210002]).