

Product datasheet for RC229120

APOPT1 (NM_032374) Human Tagged ORF Clone

Product data:

Product Type: Expression Plasmids
Product Name: APOPT1 (NM_032374) Human Tagged ORF Clone
Tag: Myc-DDK
Symbol: APOPT1
Synonyms: APOP; APOP1; C14orf153
Mammalian Cell Selection: Neomycin
Vector: pCMV6-Entry (PS100001)
E. coli Selection: Kanamycin (25 ug/mL)
ORF Nucleotide Sequence: >RC229120 representing NM_032374
 Red=Cloning site Blue=ORF Green=Tags(s)

TTTTGTAATACGACTCACTATAGGGCGGCCGGAATTCGTCGACTGGATCCGGTACCGAGGAGATCTGCC
 GCC**CGATCGCC**

ATGCTGCCGTGCGCCGCGGGAGCCAGGGGGCGTGGGGCCATGGTGGTCTTGCGGGCGGGGAAGAAGACCT
 TTCTCCCCCTCTCTGCCGCGCTTCGCTGCCGCGGTGTCAACTCGCTCCGGAGCGGGCGCCGAGCG
 CAGGGATACGGCGCCAGCGGGTCTCAAGATTCTGCCCTCAAGAAAGTCTTGCCATGATTGGATAGGA
 CCCCCAGATAAATATTCAAACCTTCGACCTGTTCACTTTTACATACCTGAAAATGAATCTCCATTGGAAC
 AAAAGCTTAGAAAATTAAGACAAGAAACAAGAATGGAATCAACAGTTCTGGGCAAACCAAGATTTGAC
 TTTTAGTAAGGAAAAAGAAGATTTATTCACTCAAGACTAAAACTAAAGCCTGGGCTGAGAAGTAA
 TCAGGTACAGAAAGCAACATTGAATGCAGAAAGAAATGGCGGACTTCTACAAGGAATTTTTAAGTAAAAAT
 TTCAGAAGCACATGTATTATAACAGAGATTGGTACAAGCGCAATTTTGCCATCACCTTCTTCATGGGAAA
 AGTGGCCCTGGAAAGGATTTGGAACAAGCTTAAACAGAAACAAAAGAAGAGGAGCAAC

ACGCGTACGCGGCCGCTCGAGCAGAACTCATCTCAGAAGAGGATCTGGCAGCAATGATATCCTGGATT
 ACAAGGATGACGACGATAAGGTTTAA

Protein Sequence: >RC229120 representing NM_032374
 Red=Cloning site Green=Tags(s)

MLPCAAGARGRGAMVVL RAGKTFLLPPLCRAFACRGCQLAPERGAERRDTAPSGVSRFCPPRKSCHDWIG
 PPDKYSNLRPVHFYIPENESPLEQKLRKLRQETQEWNQFWANQNLTF SKEKEEFIHSRLKTKGLGLRTE
 SQKATLNAEEMADFYKEFLSKNFQKHMYYNRDWWYKRNFAITFFMGKVALERIWNKQKQKRSN

TRTRPLEQKLISEEDLAANDILDYKDDDDKV



[View online »](#)

Chromatograms: https://cdn.origene.com/chromatograms/mk8011_c12.zip

Restriction Sites: SgfI-MluI

Cloning Scheme:



ACCN: NM_032374

ORF Size: 618 bp

OTI Disclaimer: The molecular sequence of this clone aligns with the gene accession number as a point of reference only. However, individual transcript sequences of the same gene can differ through naturally occurring variations (e.g. polymorphisms), each with its own valid existence. This clone is substantially in agreement with the reference, but a complete review of all prevailing variants is recommended prior to use. [More info](#)

OTI Annotation: This clone was engineered to express the complete ORF with an expression tag. Expression varies depending on the nature of the gene.

Components: The ORF clone is ion-exchange column purified and shipped in a 2D barcoded Matrix tube containing 10ug of transfection-ready, dried plasmid DNA (reconstitute with 100 ul of water).

Reconstitution Method:

1. Centrifuge at 5,000xg for 5min.
2. Carefully open the tube and add 100ul of sterile water to dissolve the DNA.
3. Close the tube and incubate for 10 minutes at room temperature.
4. Briefly vortex the tube and then do a quick spin (less than 5000xg) to concentrate the liquid at the bottom.
5. Store the suspended plasmid at -20°C. The DNA is stable for at least one year from date of shipping when stored at -20°C.

RefSeq: [NM_032374.4](#), [NP_115750.2](#)

RefSeq ORF: 621 bp

Locus ID: 84334

UniProt ID: [Q96IL0](#)

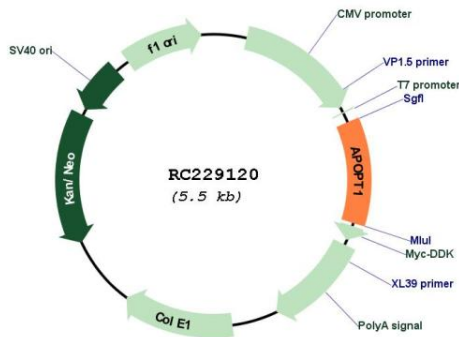
Cytogenetics: 14q32.33

Protein Families: Secreted Protein

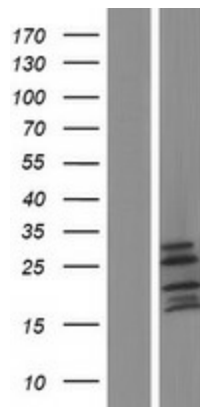
MW: 24 kDa

Gene Summary: This gene encodes a protein that localizes to the mitochondria, where it stimulates the release of cytochrome c, thereby promoting programmed cell death. Mutations in this gene have been found in individuals with mitochondrial complex IV deficiency. Alternative splicing results in multiple transcript variants. [provided by RefSeq, Nov 2014]

Product images:



Circular map for RC229120



Western blot validation of overexpression lysate (Cat# [LY432145]) using anti-DDK antibody (Cat# [TA50011-100]). Left: Cell lysates from untransfected HEK293T cells; Right: Cell lysates from HEK293T cells transfected with RC229120 using transfection reagent MegaTran 2.0 (Cat# [TT210002]).