

## Product datasheet for RC229118

### ZNF268 (NM\_152943) Human Tagged ORF Clone

#### Product data:

**Product Type:** Expression Plasmids  
**Product Name:** ZNF268 (NM\_152943) Human Tagged ORF Clone  
**Tag:** Myc-DDK  
**Symbol:** ZNF268  
**Synonyms:** HZF3  
**Mammalian Cell Selection:** Neomycin  
**Vector:** pCMV6-Entry (PS100001)  
**E. coli Selection:** Kanamycin (25 ug/mL)  
**ORF Nucleotide Sequence:** >RC229118 representing NM\_152943  
 Red=Cloning site Blue=ORF Green=Tags(s)

TTTTGTAATACGACTCACTATAGGGCGGCCGGAATTCGTCGACTGGATCCGGTACCGAGGAGATCTGCC  
GCC**CGATCGCC**

ATGGCCACCAGGGTCCGGACAGCTTCTATTTGGGTCCCACCTCTCCAAGAACGAAACAGTTCATGGGATA  
GGATCAGAAAGCTCCAAGGTCAGGAATCCATCTGGGCCAAGGGACTCCTGGTCTGCAACCTCTCCCTGG  
AACACCCAGGCAGAAGCAGAAGAGTCGAGAATAGAGAAAGTCTAGAGTGGCTGTTTATTTCCCAAGAG  
CAGCCAAAAATCACCAAGTCTGGGACCTTTGTCATTATGGATGTGTTTGTGGATTTTACCTGGGAGG  
AGTGGCAGCTGCTAGACCCAGCACAGAAGTGCCTGTACAGGAGTGTGATGTTGGAGAACTATAGCAACCT  
GGTGTCCCTAGGGTACCAACACACCAAACCTGATATCATCTTCAAGTTGGAACAAGGAGAAGAGCTGTGT  
ATGGTGCAGGCCAAGTTCCAAATCAGACCTGTCCAATTTGAAGGCTGGAAAGTCCAAAGCCAAGGTGC  
TGGCAGGTTTGGTGTCTGGTGAGGGCCTGCTCTGTGCTTCCAAGATGACGCCTTGTGCTGCATCCTCTG  
GAGACACAGTCTGGAAAAAT

**ACGCGT**ACGCGGCCGCTCGAGCAGAAACTCATCTCAGAAGAGGATCTGGCAGCAATGATATCCTGGATT  
ACAAGGATGACGACGATAAGGTTTAA

**Protein Sequence:** >RC229118 representing NM\_152943  
 Red=Cloning site Green=Tags(s)

MATRVRTASIWVPLQERNSSWDRIRKLQGQESILQGTPGLQPLPGTPRQKQKSRRIEKVLEWLFISQE  
QPKITKSWGPLSFMDVFDFTWEEWQLLDPAQKCLYRSVMLNYSNLVSLGYQHTKPDIIFKLEQGEELC  
MVQAQVPNQTCPIKAGKSKAKVLAGLVSGEGLLCASKMTPCCCLWRHSLN

**TRTRPLEQKLISEEDLAANDILDYKDDDDKV**



[View online »](#)

**Chromatograms:** [https://cdn.origene.com/chromatograms/mk8036\\_b09.zip](https://cdn.origene.com/chromatograms/mk8036_b09.zip)

**Restriction Sites:** SgfI-MluI

**Cloning Scheme:**



**ACCN:** NM\_152943

**ORF Size:** 579 bp

**OTI Disclaimer:** The molecular sequence of this clone aligns with the gene accession number as a point of reference only. However, individual transcript sequences of the same gene can differ through naturally occurring variations (e.g. polymorphisms), each with its own valid existence. This clone is substantially in agreement with the reference, but a complete review of all prevailing variants is recommended prior to use. [More info](#)

**OTI Annotation:** This clone was engineered to express the complete ORF with an expression tag. Expression varies depending on the nature of the gene.

**Components:** The ORF clone is ion-exchange column purified and shipped in a 2D barcoded Matrix tube containing 10ug of transfection-ready, dried plasmid DNA (reconstitute with 100 ul of water).

**Reconstitution Method:**

1. Centrifuge at 5,000xg for 5min.
2. Carefully open the tube and add 100ul of sterile water to dissolve the DNA.
3. Close the tube and incubate for 10 minutes at room temperature.
4. Briefly vortex the tube and then do a quick spin (less than 5000xg) to concentrate the liquid at the bottom.
5. Store the suspended plasmid at -20°C. The DNA is stable for at least one year from date of shipping when stored at -20°C.

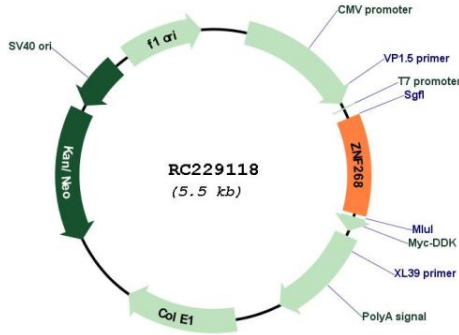
**RefSeq:** [NM\\_152943.3](#)

**RefSeq ORF:** 582 bp

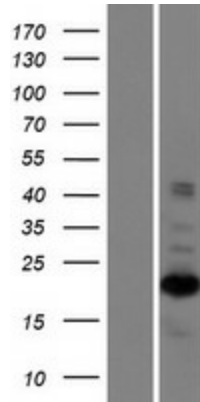
**Locus ID:** 10795

**UniProt ID:** [Q14587](#)

**Cytogenetics:** 12q24.33  
**Protein Families:** Transcription Factors  
**MW:** 21.8 kDa  
**Gene Summary:** Isoform 1: Acts as a transcriptional repressor. Inhibits erythroid differentiation and tumor cell proliferation. Plays a role during ovarian cancer development and progression. [UniProtKB/Swiss-Prot Function]

**Product images:**


Circular map for RC229118



Western blot validation of overexpression lysate (Cat# [LY432143]) using anti-DDK antibody (Cat# [TA50011-100]). Left: Cell lysates from untransfected HEK293T cells; Right: Cell lysates from HEK293T cells transfected with RC229118 using transfection reagent MegaTran 2.0 (Cat# [TT210002]).