

## Product datasheet for RC229081

### KDM5D (NM\_001146705) Human Tagged ORF Clone

#### Product data:

Product Type:	Expression Plasmids
Product Name:	KDM5D (NM_001146705) Human Tagged ORF Clone
Tag:	Myc-DDK
Symbol:	KDM5D
Synonyms:	HY; HYA; JARID1D; SMCY
Mammalian Cell Selection:	Neomycin
Vector:	pCMV6-Entry (PS100001)
E. coli Selection:	Kanamycin (25 ug/mL)
ORF Nucleotide Sequence:	>RC229081 representing NM_001146705 Red=Cloning site Blue=ORF Green=Tags(s)

TTTTGTAATACGACTCACTATAGGGCGGCCGGAATTCGTCGACTGGATCCGGTACCGAGGAGATCTGCC  
GCCCGCATCGCC

ATGGAACCGGGGTGTGACGAGTTCCTGCCGCCACCGGAGTGCCCGGTTTTTGAGCCTAGCTGGGCTGAAT  
TCCAAGACCCGCTTGGCTACATTGCGAAAATAAGGCCCATAGCAGAGAAGTCTGGCATCTGCAAAATCCG  
CCCACCCGCGGATTGGCAGCCTCCTTTTGCAGTAGAAGTTGACAATTTTACTCCTCGCGTCCAA  
AGGCTAAATGAACTGGAGGCCAACTAGAGTGAATTTGAACTATTTGGATCAGATTGCAAAATTTCTGGG  
AAATTCAGGCTCCTCTTTAAAGATTCCCAATGTGGAGCGGAAGATCTTGGACCTCTACAGCCTTAGTAA  
GATTGTGATTGAGGAAGGTGGCTATGAAGCCATCTGCAAGGATCGTCGGTGGGCTCGAGTTGCCAGCGT  
CTCCACTACCCACCGCAAAAACATTGGCTCCCTGCTACGATCACATTACGAACGCATTATTTACCCCT  
ATGAAATGTTTTCAGTCTGGAGCCAACCATGTGCAATGTAACACACACCCGTTTGACAATGAGGTAAGA  
TAAGGAATACAAGCCCCACAGCATCCCCCTTAGACAGTCTGTGCAGCCTTCAAAGTTCAGCAGCTACAGT  
CGACGGGCAAAAAGGCTACAGCCTGATCCAGAGCCTACAGAGGAGGACATTGAGAAGCATCCAGAGCTAA  
AGAAGTTACAGATATATGGGCCAGTCCCAAAATGATGGGCTTGGGCTTATGGCTAAGGATAAAGGATAA  
GACTGTGCATAAGAAAGTCACATGCCCCCAACTGTTACGGTGAAGGATGAGCAAAGTGGAGGTGGGAAC  
GTGTCATCAACATTGCTCAAGCAGCACTTGAGCCTAGAGCCCTGCACTAAGACAACCATGCAACTTCGAA  
AGAATCACAGCAGTGCCAGTTTTATTGACTCATATATTTGCCAAGTATGCTCCCGTGGGGATGAAGATGA  
TAAGCTTCTTTTCTGTGATGGCTGTGATGACAATTACCACATCTTCTGCTTGTACCACCCCTTCTGAA  
ATCCCCAGAGGCATCTGGAGGTGCCAAAATGTATCTTGGCGGAGTGAAACAGCCTCCTGAAGCTTTTG  
GATTTGAACAGGCTACCCAGGAGTACAGTTTGCAGAGTTTTGGTGAATGGCTGATTCTTCAAGTCCGA  
CTACTTCAACATGCCTGTACATATGGTGCCTACAGAACTGTAGAGAAGGAATTTGGAGGCTGGTGAAGC  
AGCATTGAGGAAGACGTGACAGTTGAATATGGAGCTGATATTCTTCAAAGAATTTGGCAGTGGCTTTT  
CTGTCAGCAATAGCAAACAAAATTTATCTCCTGAGGAGAAGAGACAAAGTCTCACTGTGTTGACCAGGCT  
GATCTCAAGCTTCTGGCTCAAGCAGTCTCCACCTTGGCTCCCAAGTGTGGGATTACAGGAGTAT



[View online >](#)

GCGACCAGTGGTTGGAACCTGAATGTGATGCCAGTGCTAGATCAGTCTGTTCTCTGTCACATCAATGCAG  
 ACATCTCAGGCATGAAGGTGCCCTGGCTGTACGTGGGCATGGTTTTCTCAGCATTTTGTGGCATATTGA  
 GGATCACTGGAGTTACTCTATTAATACTGTCATTGGGGTGAGCCGAAGACCTGGTATGGTGTACCTCC  
 CTGGCAGCAGAGCATTGGAGGAGGTGATGAAGATGCTGACACCTGAGCTGTTTGATAGCCAGCCTGATC  
 TCCTACACCAGCTGTCACTCTCATGAATCCCAACTTTGATGTCCCATGGTGTGCCAGTTGTCCGCAC  
 AAACAGTGTGCAGGGGAGTTTGTCACTTTTCTCGTGCTTACCACAGTGGTTTTAACCAAGGCTAC  
 AATTTTGTGAAGCTGTCAACTTTTGTACTGCTGACTGGCTACCTGCTGGACGCCAGCATTGAACAT  
 ACCGCCGGCTCCGGCGCTATTGTGCTTCTCCACGAGGAGCTCATCTGCAAGATGGCTGCCTTCCAGA  
 GACGTTGGATCTCAATCTAGCAGTAGCTGTGCACAAGGAGATGTTCAATTATGTTTTCAGGAGGAGCGCT  
 CTACGAAAGGCCCTTTGGAGAAGGGCGTCACGGAGGCTGAGCGAGAGGCTTTTGGAGCTGCTCCAGATG  
 ATGAACGCCAGTGCATCAAGTGAAGACCAGTGTCTTGTGTCAGCCCTGGCTGCTACGACTGCCAGAG  
 TGGCCTTGATGCCTTCCACATCAATGACCTCTGCAAGTGTCTAGTAGCCGACAGTACCTCCGGTAT  
 CGGTACACCTGGATGAGCTCCCACCATGCTGCATAAAGTGAAGATTGGGGTGTAGTCTTTGACACCT  
 GGGCCAAACAAGTGCAGTGGCCTTGGAGGTGGAGGATGGCCGTAACGCAGCTTTGAAGAGCTAAGGGC  
 ACTGGAGTCTGAGGCTCGTGTGAGAGGAGTTTCTAATAGTGTGCTTACGCGACTGAAGAAGTGCCTG  
 AGTGAGGTGGAGGCTTGTATTGCTCAAGTCTGGGGCTGGTCAAGTGGTCAAGTGGCCAGGATGGACACTC  
 CACAGCTGACCTTACTGAACTCCGGGCTTCTTGTGAGCAGATGGGCAGCCTGCCCTGTGCCATGCATCA  
 GATTGGGGATGTCAAGGATGTCTTGAACAGGTGGAGGCTATCAAGCTGAGGCTCGTGAGGCTCTGGCC  
 AACTGCCCTCTAGTCCAGGGCTATTGCGGTCCCTGTTGGAGAGGGGGCAGCAGCTGGGTGTAGAGGTGC  
 CTGAAGCCCATCAGCTTACAGCAGAGGTGGAGCAGGCGCAATGGCTAGATGAAGTGAAGCAGGCCCTGGC  
 CCCTTCTGCTCACAGGGGCTCTGTGTCATCATGCAGGGGCTTTGGTTATGGGTGCCAAGATAGCCTCC  
 AGCCCTTCTGTGACAAGGCCGGGCTGAGCTGCAAGAAGTACTGACCATGTCAGAGCGCTGGGAAGAAA  
 AGCCTCATTTCTGCCTGGAGGCCAGGCAGAAAGCATCCACCAGCCACATTGGAAGCCATAATTCGTGAGAC  
 AGAAAACATCCCTGTTACCTGCCTAACATCCAGGCTCTCAAAGAAGCTGTACTAAGGCACAAGCTTGG  
 ATTGCTGATGTGGATGAGATCCAAAATGGTGACCACTACCCCTGTCTAGATGACTTGGAGGGCTGGTGG  
 CTGTGGGCCGGGACCTGCCTGTGGGGCTGGAAGAGCTGAGACAGCTAGAGCTGCAGGATTTGACAGCACA  
 TTCCTGGAGAGAGAAGGCCTCCAAGACCTTTCTCAAGAAGAATTCTTGTACACACTGCTTGGAGTGTCT  
 TGCCCGTGTGCAGACGCTGGCTCAGACAGCACCAGCGTAGCCGGTGGATGGAGAAGGGCTGGGGTTGT  
 ACCAGTGTGACACAGAGCTGCTGGGGCTGTGTCACAGGACCTCAGAGACCCAGGCTCTGTGATTGTGGC  
 CTTCAAGGAAGGGGAACAGAAGGAGAAGGAGGGTATCCTGCAGCTGCGTGCACCAACTCAGCCAAGCCC  
 AGTCCACTGGCACCATCCCTCATGGCCTTCTCCGACTTCTATCTGTGTGTGGGCAGGTGCCAGCTG  
 GGGTGGGAGTTTGCAGTGTGACCTGTGTGAGGACTGGTCCATGGGCAGTGTGTGTGAGTCCCATCT  
 CCTCACCTCTCAAAGGCCAGTCTCACTTCATCTCCACTGCTAGCCTGGTGGGAATGGGACACAAAATTC  
 CTGTGTCCACTGTGTATGCGCTCACGACGGCCACGCCTAGAGACAATCCTAGCCTTGTGGTTGCCCTGC  
 AGAGGCTGCCCGTGCGGCTGCCTGAGGGTGAAGGCTTCAAGTGTGACTGCTGTGTCAGAGAGGGCCATTGGCTGGCA  
 AGACCGTGCCAGAAAGGCTCTGGCCTCTGAAGATGTGACTGCTGTGTCAGACAGCTGGCTGAGCTTGC  
 CAACAGCTACAGGCCAAACCCAGACCAGAGGAGGCTCAGTCTACACTTACGCCACTGCCTGTGACCCTA  
 TCAGAGAAGGCAGTGGCAACAATTTCTAAGGTCCAAGGGCTGTGGAGAATGGAGACAGTGTGACCAG  
 TCCTGAGAACATGGCTCCAGGAAAGGGCTGACCTGGAGTACTGTCTCACTGTTGCCGCAAGTTGACT  
 GGCCCTGTGTTGGAGCTGCCTGAGGCAATCCGGGCTCCCCTGGAGGAGCTCATGATGGAAGGGGACCTGC  
 TTGAGGTGACCCTGGATGAGAACCACAGCATCTGGCAGCTGCTGCAGGCTGGACAGCCTCCAGACCTGGA  
 CAGAATTCGCACACTTCTGGAGCTGAAAAATTTGAACATCAAGGGAGTCGGACAAGGAGCCGGGCTCTG  
 GAGAGGCGACGGCGGGCAGAAAGTGGATCAGGGTAGAAACGTTGAGAATCTTGTTCACAGGAGCTTC  
 AGTCAAAAAGGGCTCGGAGCTCAGGGATTATGTCTCAGGTGGGCCGAGAAGAAGCAATTATCAGGAGAA  
 AGCAGACCGTAAAAATATGTTCTGACACCTTCCACAGACCACAGCCCTTCTTGAAGGAAACCAAAAT  
 AGCTTACAACACAAGGATTCAGGCTCTCAGCTGCTTGCCTTCTTAATGCCTTTGCTACAACCTCTCT  
 ACTCTGATGAGCAACAGTTG

ACGCGTACGCGGCCGCTCGAGCAGAACTCATCTCAGAAGAGGATCTGGCAGCAAATGATATCCTGGATT  
 ACAAGGATGACGACGATAAGGTTTAA

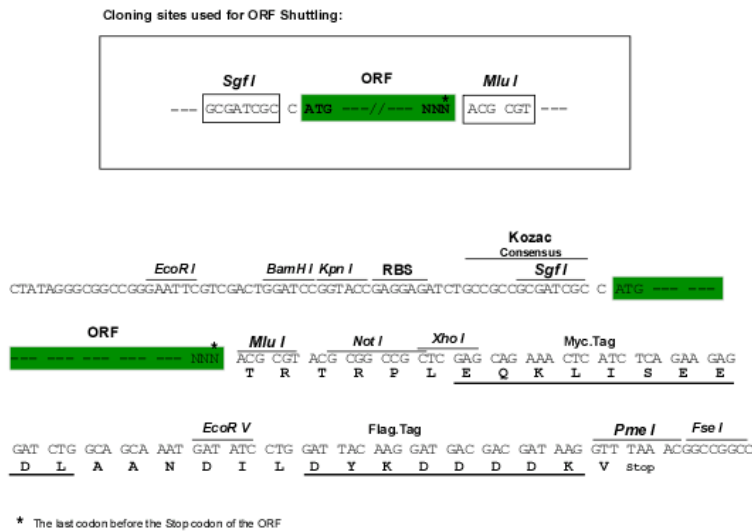
**Protein Sequence:** >RC229081 representing NM\_001146705  
 Red=Cloning site Green=Tags(s)

```
MEPGCDEFLPPPECPVFEPSSWAEFQDPLGYIAKIRPIAEKSGICKIRPPADWQPPFAVEVDNFRFTPRVQ
RLNELEAQTRVKLNLYLDQIAKFWEIQGSSLKIPNVERKILDLYLSKIVIEEGGYEAICKDRRWARVAQR
LHYPPGKNIGSLLRSHYERIIYPYEMFQSGANHVQCNTHPFDNEVKDKEYKPHSIPLRQSVQPSKFSYS
RRAKRLQPDPEPTEEDIEKHPELKKLQIYGP GPKMMGLGLMAKDKDKTVHKKVTCPTVTYVKDEQSGGGN
VSSTLLKQHLLEPCTKTTMLRKNHSSAQFIDSYICQVCSRGDDEDDKLLFCDGCDNDYHIFCLLPPLPE
IPRGIWRCPKCILAECKQPPEAFGFEQATQEYSLQSFQSGEMADSFKSDYFNMPVHMVPTLVEKEFWRLVS
SIEEDVTVYEGADIHSKEFGSGFPVSNKQNLSPEEKRQSLTVLTRLISSFWAQAVLPPWPKVLGLQEY
ATSGWNLNVMPVLDQSVLCHINADISGMKVPWL YVGMVSAFCWHIEDHWSYSINYLHWGEPKTYWGVPS
LAAEHLEEVKMLTPELFDSDPDLHLQLVTLMPNNTLMSHGVPVVRTNQ CAGEFVITFPRAYHSGFNQGY
NFAEAVNCTADWLPAGRQCIHYRRLRRYCVFSHEELICKMAAFPETLDLNLAVAVHKEMFIMVQEERR
LRKALLEKGVTEAERAEFELLPDDERQCIKCKTTCFLSALACYDCPDGLVCLSHINDLCKSSSRQYLRY
RYTLDELPTMLHKLKIRAESFDTWANKVRVALEVEDGRKRSFEELRALESEARERRFPNSELLQRLKNCL
SEVEACIAQVLGLYSGQVARMPTPQLTL TELRVLLEQMGLSPCAMHQIGDVKDVLEQVEAYQAEAREALA
TLPSSPGLLRSLRERGQQLGVEVPEAHQLQQQVEQAQWLDEVKQALAPS AHRGSLVIMQGLLVMGAKIAS
SPSVDKARAEQELLTIAERWEEKAHFCLEARQKHPPATLEAIIRETENIPVHLPNIQALKEALTKAQAW
IADVDEIQNGDHYPLDDLEGLVAVGRDLPVGLLELRQLELQVLTAH SWREKASKTFLKKNSCYTLLEVL
CPCADAGSDSTKRSRWMEKALGLYQCDTELLGLSAQDLRDPG SVIVAFKEGEQKEGILQLRRTNSAKP
SPLAPSLMASSPTSI CVCGQVPAGVGLQCDLCQDWFHGQCVSVPHLL TSPKPSLTSSPLLAWWEWDTKF
LCPLCMRSRRRPLETILALLVALQRLPVRLPEGEALQCLTERAIGWQDRARKALASEDVTALLRQLAELR
QQLQAKPRPEEASVYTSATACDP IREGSGNNISKVQGLLENGDSVTS PENMAPGKGSDELELLSSLLPQLT
GPVLELPEAIRPLEELMMEGDLLEVTLDENHSIWQLLQAGQPPDLDRIRTLLELEKFEHQGSRTRSRL
ERRRRRQKVDQGRNVENLVQQLQSKRARSSGIMSVQVGRREEEHYQEKADRENMF LTPSTDHSPFLKGNQN
SLQHKDSGSSAACPSLMPLQLSYSDEQQL
```

TRTRPLEQKLISEEDLAANDILDYKDDDDKV

**Restriction Sites:** SgfI-MluI

**Cloning Scheme:**

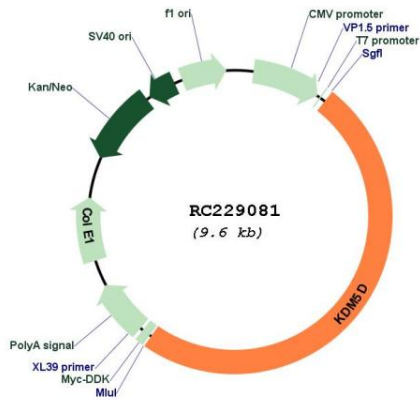


**ACCN:** NM\_001146705

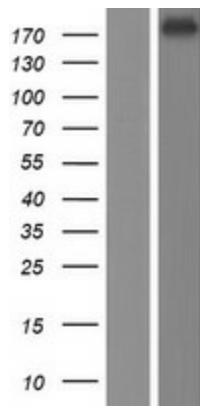
**ORF Size:** 4710 bp

<b>OTI Disclaimer:</b>	The molecular sequence of this clone aligns with the gene accession number as a point of reference only. However, individual transcript sequences of the same gene can differ through naturally occurring variations (e.g. polymorphisms), each with its own valid existence. This clone is substantially in agreement with the reference, but a complete review of all prevailing variants is recommended prior to use. <a href="#">More info</a>
<b>OTI Annotation:</b>	This clone was engineered to express the complete ORF with an expression tag. Expression varies depending on the nature of the gene.
<b>Components:</b>	The ORF clone is ion-exchange column purified and shipped in a 2D barcoded Matrix tube containing 10ug of transfection-ready, dried plasmid DNA (reconstitute with 100 ul of water).
<b>Reconstitution Method:</b>	<ol style="list-style-type: none"><li>1. Centrifuge at 5,000xg for 5min.</li><li>2. Carefully open the tube and add 100ul of sterile water to dissolve the DNA.</li><li>3. Close the tube and incubate for 10 minutes at room temperature.</li><li>4. Briefly vortex the tube and then do a quick spin (less than 5000xg) to concentrate the liquid at the bottom.</li><li>5. Store the suspended plasmid at -20°C. The DNA is stable for at least one year from date of shipping when stored at -20°C.</li></ol>
<b>RefSeq:</b>	<a href="#">NM_001146705.1</a> , <a href="#">NP_001140177.1</a>
<b>RefSeq ORF:</b>	4713 bp
<b>Locus ID:</b>	8284
<b>UniProt ID:</b>	<a href="#">Q9BY66</a>
<b>Cytogenetics:</b>	Yq11.223
<b>Protein Families:</b>	Druggable Genome, Transcription Factors
<b>MW:</b>	177.4 kDa
<b>Gene Summary:</b>	This gene encodes a protein containing zinc finger domains. A short peptide derived from this protein is a minor histocompatibility antigen which can lead to graft rejection of male donor cells in a female recipient. Alternative splicing results in multiple transcript variants. [provided by RefSeq, Apr 2009]

Product images:



Circular map for RC229081



Western blot validation of overexpression lysate (Cat# [LY432108]) using anti-DDK antibody (Cat# [TA50011-100]). Left: Cell lysates from untransfected HEK293T cells; Right: Cell lysates from HEK293T cells transfected with RC229081 using transfection reagent MegaTran 2.0 (Cat# [TT210002]).