

Product datasheet for **RC229079**

KDM5D (NM_001146706) Human Tagged ORF Clone

Product data:

Product Type: Expression Plasmids
Product Name: KDM5D (NM_001146706) Human Tagged ORF Clone
Tag: Myc-DDK
Symbol: KDM5D
Synonyms: HY; HYA; JARID1D; SMCY
Vector: pCMV6-Entry (PS100001)
E. coli Selection: Kanamycin (25 ug/mL)
Cell Selection: Neomycin
ORF Nucleotide Sequence: >RC229079 representing NM_001146706
Red=Cloning site Blue=ORF Green=Tags(s)

TTTTGTAATACGACTCACTATAGGGCGCCGGAATTCGTCGACTGGATCCGGTACCGAGGATCTGCC
GCCGGATCGCC

ATGGAACCGGGTGTGACGAGTTCCTGCCGCCACCGAGTGCCCGTTTTTGAGCCTAGCTGGGCTGAAT
TCCAAGACCCGTTGGCTACATTGCGAAAATAAGGCCATAGCAGAGAAGTCTGGCATCTGCAAAATCCG
CCCACCCGCGGATTGGCAGCCTCCTTTTGCAGTAGAAGTTGACAATTCAGATTTACTCCTCGCGTCCAA
AGGCTAAATGAACTGGAGGCCAAACTAGAGTGAATGAACTATTTGGATCAGATTGCAAAATCTGGG
AAATTCAGGCTCCTCTTTAAAGATTCCTAATGTGGAGCGGAAGATCTTGGACCTCTACAGCCTTAGTAA
GCAATGTAACACACACCCGTTTGACAATGAGGTAAGATAAGGAATACAAGCCCCACAGCATCCCCCTT
AGACAGTCTGTGCAGCCTTCAAAGTTCAGCAGCTACAGTCGACGGGCAAAAAGGCTACAGCCTGATCCAG
AGCCTACAGAGGAGGACATTGAGAAGCATCCAGAGCTAAAGAAGTTACAGATATATGGCCAGGTCCCAA
AATGATGGGCTTGGGCTTATGGCTAAGGATAAGGATAAGACTGTGCATAAGAAAGTACATGCCCCCA
ACTGTTACGGTGAAGGATGAGCAAAGTGGAGGTGGGAACGTGTCATCAACATTGCTCAAGCAGCATTGA
GCCTAGAGCCCTGCACTAAGACAACCATGCAACTCGAAAGAATCACAGCAGTGCCCAAGTTTATTGACTC
ATATATTTGCCAAGTATGCTCCCGTGGGATGAAGATGATAAGCTTCTTTCTGTGATGGCTGTGATGAC
AATTACCACATCTTCTGCTTGTACCACCCCTTCTGAAATCCCCAGAGGCATCTGGAGGTGCCAAAAT
GTATCTTGGCGGAGTGTAACAGCCTCCTGAAGCTTTTGGATTTGAACAGGCTACCCAGGAGTACAGTTT
GCAGAGTTTTGGTGAATGGCTGATTCCTTCAAGTCCGACTACTTCAACATGCCTGTACATATGGTGCCT
ACAGAACTGTAGAGAAGGAATCTGGAGGCTGGTGAAGCAGCATTGAGGAAGACGTGACAGTTGAATATG
GAGCTGATATTCATTCAAAAGATTTGGCAGTGGCTTTCTGTGCAAGTACAGCAATAGCAAAACAACTTATCTCC
TGAGGAGAAGGAGTATGCGACCAGTGGTTGGAACCTGAATGTGATGCCAGTGTAGATCAGTCTGTTCTC
TGTCACATCAATGCAGACATCTCAGGCATGAAGGTGCCCTGGCTGTACGTGGGCATGGTTTTCTCAGCAT
TTTGTTGGCATATTGAGGATCACTGGAGTACTCTATTAAGTATCTGCATTGGGGTGAGCCGAAGACCTG
GTATGGTGTACCTCCCTGGCAGCAGAGCATTTGGAGGAGGTGATGAAGATGCTGACACCTGAGCTGTTT
GATAGCCAGCCTGATCTCCTACACCAGCTTGTCACTCTCATGAATCCCAACACTTGTATGTCCCATGGTG



TGCCAGTTGTCCGCACAAACCAGTGTGCAGGGGAGTTTGTCACTTTTTCTCGTGCTTACCACAGTGG
TTTTAACCAAGGCTACAATTTTGTCTGAAGCTGTCAACTTTTGTACTGCTGACTGGCTACCTGCTGGACGC
CAGTGCATTGAACACTACCGCCGGCTCCGGCGCTATTGTGTCTTCTCCCACGAGGAGCTCATCTGCAAGA
TGGCTGCCTTCCCAGAGACGTTGGATCTCAATCTAGCAGTAGCTGTGCACAAGGAGATGTTCAATTATGGT
TCAGGAGGAGCGACGCTACGAAAGGCCCTTTGGAGAAGGGCGTCACGGAGGCTGAGCGAGAGGCTTTT
GAGTGCCTCCCAGATGATGAACGCCAGTGCATCAAGTCAAGTCAAGTCAAGTCAAGTCAAGTCAAGTCAAGT
GCTACGACTGCCAGATGGCCTTGATGCCTTTCCACATCAATGACCTCTGCAAGTCTAGTAGTACGCG
ACAGTACCTCCGGTATCGGTACACCTTGGATGAGCTCCCCACCATGCTGCATAAACTGAAGATTCGGGCT
GAGTCTTTTGACACCTGGGCCAAACAAAGTGCAGTGGCCTTGGAGGTGGAGGATGGCCGTAACGCAGCT
TTGAAGAGCTAAGGGCACTGGAGTCTGAGGCTCGTGAGAGGAGGTTTCTAATAGTGAAGTCTTACGCG
ACTGAAGAACTGCCTGAGTGAAGTGGAGGCTTGTATTGCTCAAGTCTGGGGCTGGTCAAGTGGTCAAGT
GCCAGGATGGACACTCCACAGCTGACCTTGAAGTCAAGTCCGGGCTCTTGTAGCAGATGGGCAGCTGC
CCTGTGCCATGCATCAGATTGGGATGTCAAGGATGTCTGGAACAGGTGGAGGCCTATCAAGTGAAGC
TCGTGAGGCTCTGGCCACTGCCCTTAGTCCAGGGCTATTGCGGTCCCTGTTGGAGAGGGGGCAGCAG
CTGGGTGAGAGGTGCCGAAGCCATCAGCTTCAAGCAGAGGTGGAGCAGGCGCAATGGCTAGATGAAG
TGAAAGCAGGCCCTGGCCCTTCTGCTCACAGGGGCTCTGTTGATCATGACAGGGGCTTTTGGTTATGGG
TGCCAAGATAGCTCCAGCCCTTCTGTGGAACAAGGCCCGGGCTGAGTGAAGAAGTACTGACCATTTGCA
GAGCGCTGGGAAGAAAAGGCTCATTCTGCCTGGAGGCCAGGCAGAAAGCATCCACAGCCACATTGGAAG
CCATAATTCGTGAGACAGAAAACATCCCTGTTACCTGCCTAACATCCAGGCTCTCAAAGAAGCTCTGAC
TAAGGCACAAGCTTGGATTGCTGATGTGGATGAGATCCAAAATGGTGACCACTACCCCTGTCTAGATGAC
TTGGAGGGCTGGTGGCTGTGGGCCGGGACCTGCCTGTGGGGCTGGAAGAGCTGAGACAGCTAGAGCTGC
AGGTATTGACAGCACATTCCTGGAGAGAGAAGGCTCCAAGACCTTTCTCAAGAAGAATCTTGTACAC
ACTGCTTGAGGTGCTTTGCCCGTGTGCAGACGCTGGCTCAGACAGCACCAGCGTAGCCGGTGGATGGAG
AAGGCGCTGGGGTTGTACCAGTGTGACACAGAGCTGCTGGGGCTGTCTGCACAGGACCTCAGAGACCCAG
GCTCTGTGATTGTGCCTTCAAGGAAGGGGAACAGAAGGAGAAGGAGGATCCTGCAGCTGCGTGCAC
CAACTCAGCCAAGCCAGTCCACTGGCACCATCCCTCATGGCCTTCTCCGACTTCTATCTGTGTGTGT
GGGCAGGTGCCAGCTGGGGTGGGAGTCTGCAGTGTGACCTGTGTGAGGACTGGTTCATGGGCAGTGTG
TGTCAAGTCCCCATCTCCTCACCTCTCAAAGCCAGTCTCACTTCTACTTCCACTGCTAGCCTGGTGGGA
ATGGGACACAAAATTCCTGTGTCCACTGTGTATGCGCTCACGACGGCCACGCCTAGAGACAATCCTAGCC
TTGCTGGTTGCCCTGCAGAGGCTGCCCGTGGGCTGCCTGAGGGTGAAGCCCTTCAAGTGTCTCACAGAGA
GGGCCATTGGCTGGCAAGACCGTCCAGAAAGGCTCTGGCCTCTGAAGATGTGACTGCTCTGTTGCGACA
GCTGGCTGAGCTTCGCCAACAGCTACAGGCCAAACCCAGACCAGAGGAGGCTCAGTCTACACTTACGCC
ACTGCCTGTGACCTATCAGAGAAGGCAGTGGCAACAATATTTCTAAGGTCCAAGGGCTGCTGGAGAATG
GAGACAGTGTGACCAGTCTGAGAACATGGCTCCAGGAAAGGGCTCTGACCTGGAGCTACTGTCTCACT
GTTGCCGAGTTGACTGGCCCTGTGTTGGAGCTGCCTGAGGCAATCCGGGCTCCCCTGGAGGAGCTCATG
ATGGAAGGGGACCTGCTTGAAGTGAACCTGGATGAGAACCACAGCATCTGGCAGCTGCTGCAGGCTGGAC
AGCCTCCAGACCTGGACAGAATTCGCACACTTCTGGAGCTGGAAAAATTTGAACATCAAGGGAGTCCGGAC
AAGGACCCGGCTCTGGAGAGGCGACGGCGCGGCGAGAAGGTGGATCAGGGTGAAGACGTTGAGAATCTT
GTTCAACAGGAGCTTCAAGTCAAAAAGGGCTCGGAGCTCAGGGATTATGTCTCAGGTGGCCGAGAAGAAG
AACATTATCAGGAGAAAGCAGACCGTGAAAATATGTTCCCTGACACCTTCCACAGACCACAGCCCTTCTT
GAAAGGAAACAAAATAGCTTACAACACAGGATTCAAGGCTCTTCAAGTCTTGTCTTCTTAAATGCCT
TTGCTACAACCTCTCTACTCTGATGAGCAACAGTTG

ACGCGTACGCGGGCGCTCGAGCAGAACTCATCTCAGAAGAGGATCTGGCAGCAATGATATCCTGGATT
ACAAGGATGACGACGATAAGGTTTAA

Protein Sequence: >RC229079 representing NM_001146706
 Red=Cloning site Green=Tags(s)

MEPGCDEFLPPPECPVFEPSSWAEFQDPLGYIAKIRPIAEKSGICKIRPPADWQPPFAVEVDNFRFTPRVQ
 RLNELEAQTRVKLNYLDQIAKFWEIQGSSLKIPNVERKILDLYSLSKQCNTHPDNEVKDKEYKPHSIPL
 RQSVQPSKFSYSRRAKRLQPDPEPTEEDIEKHPELKKLQIYGP GPKMMGLGLMAKD KDKTVHKKVTCPP
 TVTVKDEQSGGGNVSSLLKQHLSEPC TKTTMQLRKNHSSAQFIDSYICQVCSRGEDEDDKLLFCDCGDD
 NYHIFCLLPPLPEIPRGIWRCPKCILAECKQPPEAFGFEQATQEYSLQSFEMADSFKSDYFNMPVHMVP
 TELVEKEFWRLVSSIEEDVTVEYGADIH SKEFGSGFPVSNKQNLSP EEEYATSGWNLNVMPVLDQSVL
 CHINADISGMKVPWLYVGMVFSAF CWHI EDHWSYSINYLHWGEPK TWYGVPSLAAEHLEEV MKMLTPELF
 DSQPDLLHQLVTL MNPNTLM SHGVPVVRTNQCAGEFVITFP RAYHSGFNQGYNFAEAVNFCTADWLPAGR
 QCIEHYRRLRRYCVFSHEELICKMAFPETLDLNLAVAVHKEMFIMVQEERRLRKALLEKGVTEAEREA
 ELLPDDERQCIKCKTTCFLSALACYDCPDGLVCLSHINDLCKC SSSRQYLRYRYTLD ELP TMLHKLKIRA
 ESFDTWANKVRVALEVEDGRKR SFEELRALESEARERRFPNSELLQRLKNCLSEVEACIAQV LGLVSGQV
 ARMDTPQLTL TELRVLLEQMGSLPCAMHQIGDVKDVL EQVEAYQAEAREALATLPSSPGLLRSLLEGGQQ
 LGVEVPEAHQLQQQVEQAQWLDEVKQALAPSAHRGSLVIMQGLLVMGAKIASSPSVDKARAE LQELLTIA
 ERWEEKAHFCLEARQKHPPATLEAI IRETENIPVHL PNIQALKEALTKAQAWIADVDEIQNGDHYCLDD
 LEGLVAVGRDLPVGLEELRQLELQVLT AHSWREKASKTFLKKN SCYTLLEVLCP CADAGSDSTKRSR WME
 KALGLYQCDTELLGLSAQDLRDPGSVIVAFKEGEQKEKEGILQLRRTNSAKPSPLAPSLMASSPTSICVC
 GQVPAGVGV LQCDLQDWFHGQC VSVPHLLTSPKPSLTS SPLLAWWEWDTKFLCPLCMRSRRRPLETILA
 LLVALQRLPVRLPEGEALQCLTERAIGWQDRARKALASEDVTALLRQLAELRQQLQAKPRPEEASVYTS
 TACDPIREGSGNNISKVQGLLENGDSVTPENMAPGKGSDELLSLLPQLTGPVLELPEAIRAPLEELM
 MEGDLLEVTLDENHSIWQLLQAGQPPDLDRIRTLLELEKFEHQGSRTSRALERRRRRQKVDQGRNVENL
 VQQELQSKRARSSGIMSQVGREEEHYQEKA DRENMF LTPSTDHSPFLKGNQNSLQHKDSGSSAACPSLMP
 LLQLSYSDEQQL

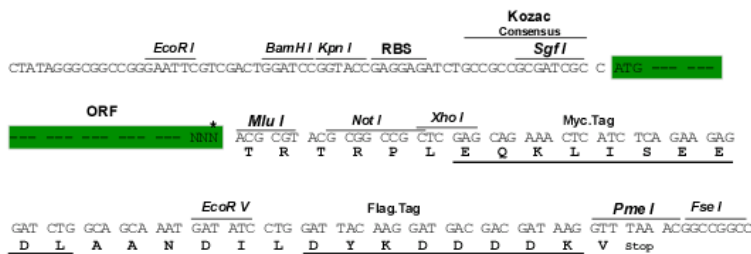
TRTRPLEQKLISEEDLAANDILDYKDDDDKV

Restriction Sites:

SgfI-MluI

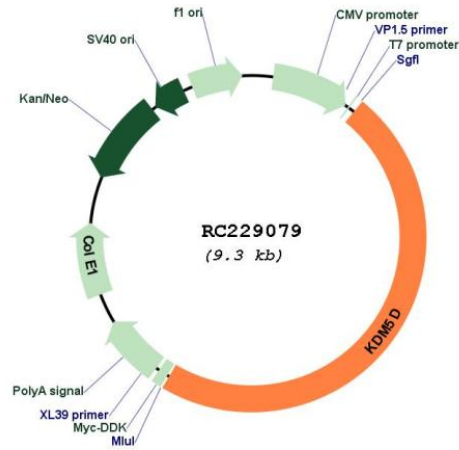
Cloning Scheme:

Cloning sites used for ORF Shuttling:



* The last codon before the Stop codon of the ORF

Plasmid Map:



ACCN: NM_001146706

ORF Size: 4446 bp

OTI Disclaimer: The molecular sequence of this clone aligns with the gene accession number as a point of reference only. However, individual transcript sequences of the same gene can differ through naturally occurring variations (e.g. polymorphisms), each with its own valid existence. This clone is substantially in agreement with the reference, but a complete review of all prevailing variants is recommended prior to use. [More info](#)

OTI Annotation: This clone was engineered to express the complete ORF with an expression tag. Expression varies depending on the nature of the gene.

Components: The ORF clone is ion-exchange column purified and shipped in a 2D barcoded Matrix tube containing 10ug of transfection-ready, dried plasmid DNA (reconstitute with 100 ul of water).

Reconstitution Method:	<ol style="list-style-type: none">1. Centrifuge at 5,000xg for 5min.2. Carefully open the tube and add 100ul of sterile water to dissolve the DNA.3. Close the tube and incubate for 10 minutes at room temperature.4. Briefly vortex the tube and then do a quick spin (less than 5000xg) to concentrate the liquid at the bottom.5. Store the suspended plasmid at -20°C. The DNA is stable for at least one year from date of shipping when stored at -20°C.
RefSeq:	NM_001146706.2
RefSeq ORF:	4449 bp
Locus ID:	8284
UniProt ID:	Q9BY66
Cytogenetics:	Yq11.223
Protein Families:	Druggable Genome, Transcription Factors
MW:	167.2 kDa
Gene Summary:	This gene encodes a protein containing zinc finger domains. A short peptide derived from this protein is a minor histocompatibility antigen which can lead to graft rejection of male donor cells in a female recipient. Alternative splicing results in multiple transcript variants. [provided by RefSeq, Apr 2009]